

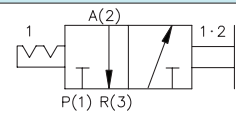
# SH series



### Features

- Made of brass or aluminium for long service life.
- Discharges residual pressure when the airflow is stopped.
- With OFF, assures safety while repairing or adjusting connected devices.

### Symbol



### How to Order

SH - 02

①      ②

#### ① Series

SH	Hand slide valve
----	------------------

#### ② Port size

M5	M5×0.8
01	R(PT) 1/8
02	R(PT) 1/4
03	R(PT) 3/8
04	R(PT) 1/2
06	R(PT) 3/4

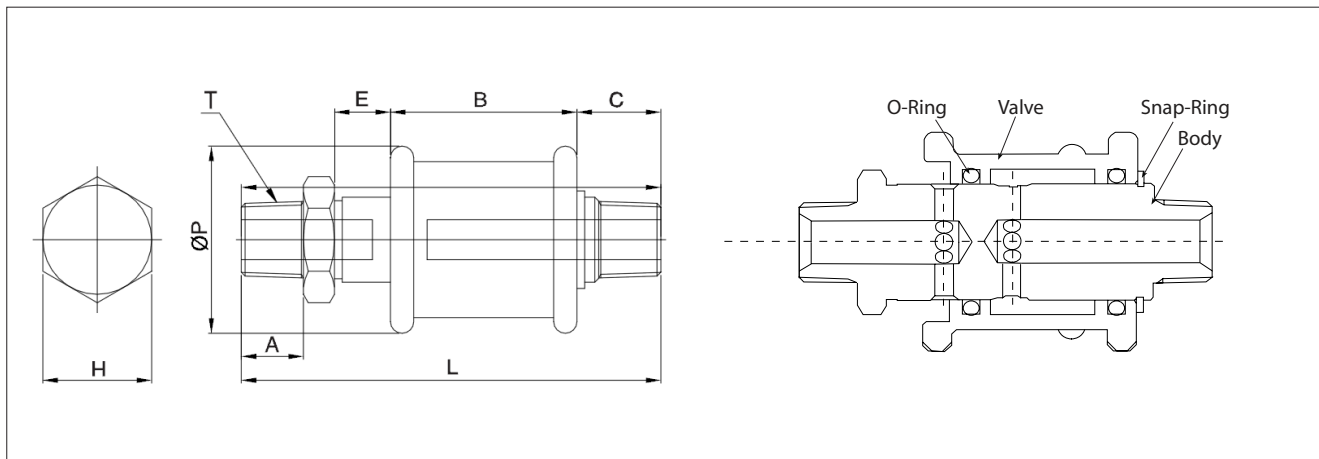
### Specifications

Fluid	Air
Working pressure	0~9.9kgf/cm <sup>2</sup> (0.99MPa)
Negative pressure	-750mmHg(-750Torr)
Temperature range	0~60°C
Applicable tube	Polyurethane, Nylon

### Applications

- Switches (On/Off) the air pressure.
- Large flow rate, more suitable to be applied on a compressed air equipment.
- Discharges residual air in equipment when the airflow is stopped.

### Dimensions & Structure



Unit: mm

Model	A	B	C	ØD1	E	H (Hex)	L	T	Box (EA)	Orifice	Weight (g)
SH-M5	4.1	23.0	7.0	19.0	6.0	9	45.0	M5X0.8P	50	2.6	24.0
SH-01	8.0	24.0	10.8	24.0	7.2	14	54.0	R(PT) 1/8	25	5.0	45.0
SH-02	10.0	38.0	12.8	30.0	7.7	17	73.5	R(PT) 1/4	12	8.0	112.0
SH-03	11.0	44.0	14.0	41.0	8.0	27	83.0	R(PT) 3/8	6	10.0	276.0
SH-04	14.0	44.0	17.0	41.0	8.0	27	89.0	R(PT) 1/2	6	13.0	270.0
SH-06	15.0	48.0	18.0	49.0	12.5	32	104.5	R(PT) 3/4	3	18.8	407.0