

# Compact One Touch Fitting



## How to Order

E CC 06 01  
① ② ③ ④

### ① Series

E	Fitting type
---	--------------

### ② Fitting type

CC	Miniaturize male straight
LC	Miniaturize male elbow
FCC	Miniaturize female straight
LLC	Miniaturize extended Male elbow
TC	Miniaturize male branch tee
OCC	Miniaturize round male straight
STC	Miniaturize male run tee
URC	Miniaturize reducer
RYC	Miniaturize union Y
RC	Miniaturize plug-in reducer
UTC	Miniaturize union tee
UYC	Miniaturize reducer Y
UCC	Miniaturize union straight
ULC	Miniaturize union elbow
PCC	Miniaturize bulkhead union

### ③ Tube outer diameter

03	Ø3
04	Ø4
06	Ø6

### ④ Connection type & size

Thread	Metric	M3	M3×0.5
		M5	M5×0.8
		M6	M6×1.0
Tube	R(PT)	01	R1/8, Rc1/8
		Nil	Same Ø as another
	Metric	03	Ø3
		04	Ø4
		06	Ø6

### Specifications

Fluid	Air
Working pressure	0~150PSI / 0~9.9kgf/cm <sup>2</sup> (0~0.99MPa)
Negative pressure	-29.5 in Hg / -750mmHg(-750Torr)
Working temperature	32~140°F / 0~60°C
Applicable tube type	Polyurethane & Nylon

### Applications

- EOCC  
The fitting can be installed by using hex wrench as a hexagonal hole is made in the inner part of the body.  
It can not be installed by other tools as the fitting outer part is in circular shape.
- ELC, ELLC Model  
Rotatable plastic body's structure makes piping efficient.

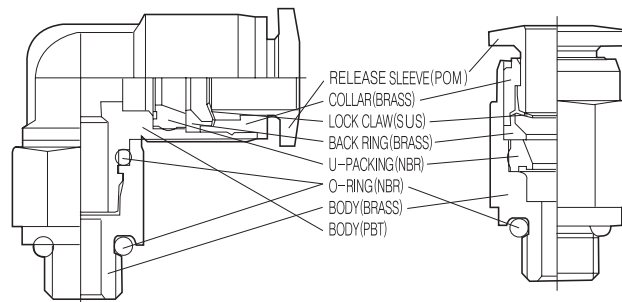
### Features

- One-Touch push-to-connect configuration allows an instant tubing connection.
- Smooth-Edge release sleeve design facilitates a quick tubing disconnection.
- Aesthetically pleasing nickel-plated metallic optional feature ensures anti-contamination properties for an extended product life.
- Pre-applied sealant on all external threads eliminates the additional sealing requirement.
- Internal and/or external flat-to-flat hexagonal configurations for both metric and inch specifications allow a proper tightening or directional orientation upon installation by using L key or allen wrench for the applicable model types.

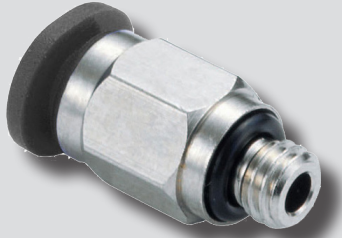
### Features

- Ideal for pneumatic connections specifically for small and compact equipments.
- Aesthetically pleasing nickel-plated metallic standardized feature for all applicable compact fittings.

### Structure

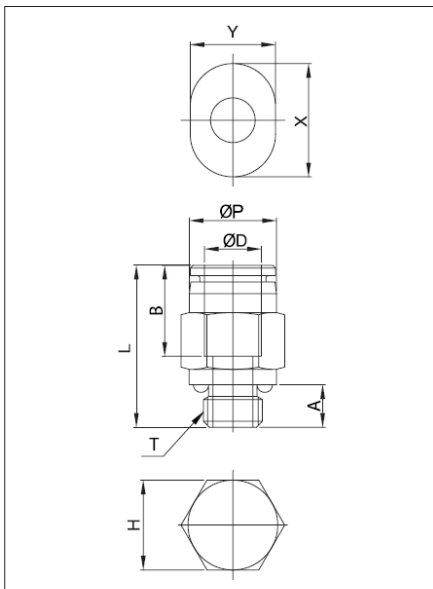


# ECC series



Miniaturize Male Straight

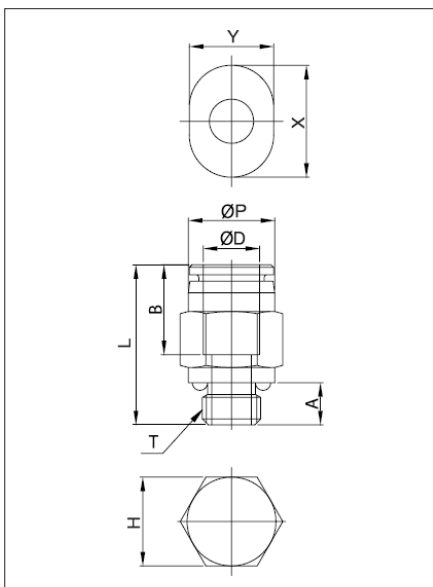
## Dimensions (R(PT) Thread)



Unit : mm

Model	ØD	ØP	T	L	A	B	H (Hex)	X	Y	Orifice	Weight (g)	Box (EA)
ECC03M3	3	7.0	M3X0.5	17.1	4.0	11.1	7	9.2	7.2	1.5	1.0	100
ECC03M5	3	7.2	M5X0.8	17.7	4.6	11.1	8	9.2	7.2	2.0	3.0	100
ECC03M6	3	7.2	M6X1.0	18.2	5.1	11.1	8	9.2	7.2	2.0	3.0	100
ECC0301	3	7.2	R(PT) 1/8	14.5	8.0	11.3	10	9.2	7.2	2.0	4.0	100
ECC04M3	4	8.0	M3X0.5	17.7	4.0	11.6	8	10.4	8.2	1.5	3.0	100
ECC04M5	4	8.0	M5X0.8	18.2	4.6	11.6	8	10.4	8.2	2.4	3.0	100
ECC04M6	4	8.0	M6X1.0	18.8	5.1	11.6	8	10.4	8.2	3.0	3.0	100
ECC0401	4	10.0	R(PT) 1/8	17.3	8.0	11.6	10	10.4	8.2	3.0	6.0	100
ECC06M5	6	10.0	M5X0.8	19.4	4.6	12.8	10	12.4	10.2	2.4	4.0	100
ECC06M6	6	10.0	M6X1.0	19.9	5.1	12.8	10	12.4	10.2	2.4	4.0	100
ECC0601	6	10.0	R(PT) 1/8	19.6	8.0	12.8	10	12.4	10.2	5.0	6.0	100

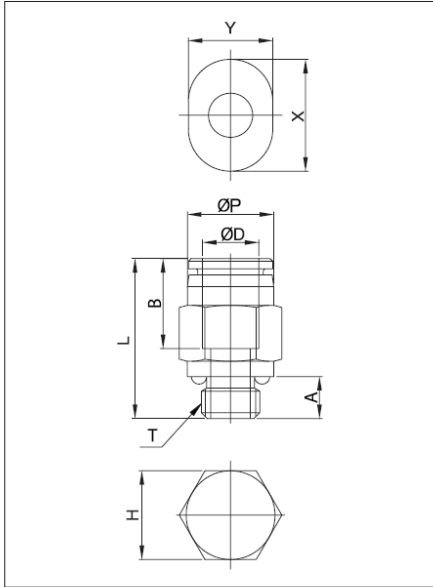
## Dimensions (G Thread)



Unit : mm

Model	ØD	ØP	T	L	A	B	H (Hex)	X	Y	Orifice	Weight (g)	Box (EA)
ECC04G01	4	8.3	G 1/8	18.8	6.0	11.6	12	10.4	8.2	3.0	5.0	100
ECC06G01	6	10.4	G 1/8	19.4	6.0	12.8	12	12.4	10.2	5.0	5.0	100

**Dimensions (NPT Thread)**



Unit : mm

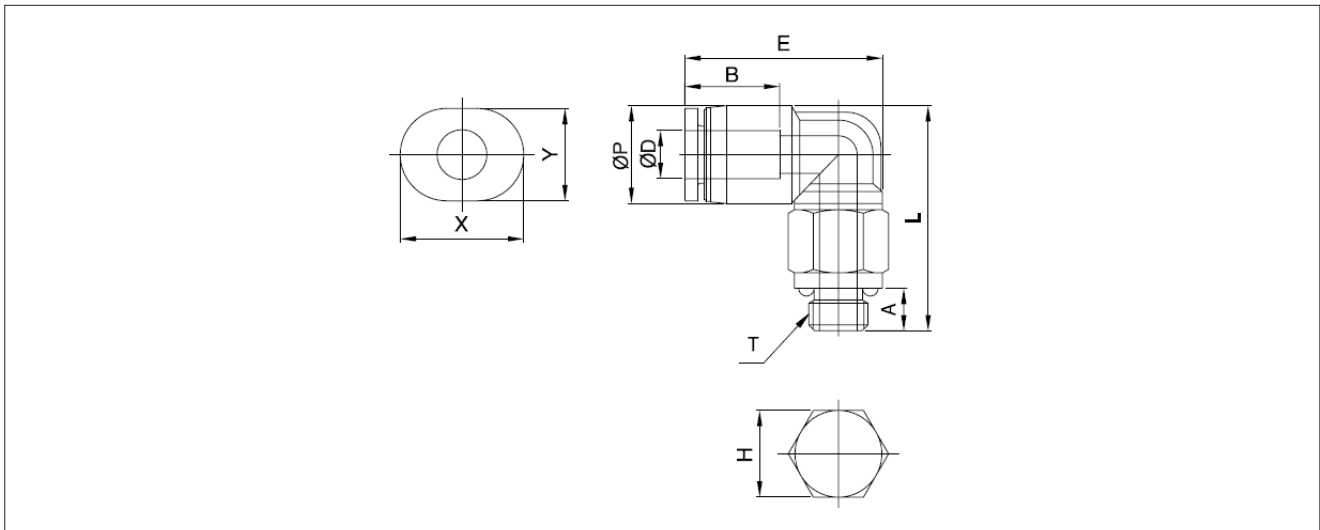
Model	ØD (INCH)	ØP	T	L	A	B	H (Hex)	X	Y	Orifice	Weight (g)	Box (EA)
ECC1/8U	1/8	7.2	UNF10/32	17.7	4.6	11.1	5/16	9.2	7.2	2.0	2.0	100
ECC1/8N0	1/8	7.2	NPT1/16	16.5	8.0	11.1	5/16	9.2	7.2	2.5	4.0	100
ECC1/8N1	1/8	7.2	NPT1/8	17.5	8.5	11.1	7/16	9.2	7.2	2.0	6.0	100
ECC1/8N2	1/8	7.2	NPT1/4	21.5	10.5	11.3	9/16	9.2	7.2	2.5	15.0	100
ECC5/32U	5/32	8.0	UNF10/32	18.2	4.6	11.6	5/16	10.4	8.2	2.5	3.0	100
ECC5/32N0	5/32	8.0	NPT1/16	18.0	8.0	11.6	5/16	10.4	8.2	3.0	5.0	100
ECC5/32N1	5/32	8.5	NPT1/8	18.5	8.5	11.6	7/16	10.4	8.2	3.0	9.0	100
ECC1/4U	1/4	10.5	UNF10/32	19.3	4.6	13.0	7/16	12.8	10.8	2.4	10.0	100
ECC1/4N0	1/4	10.5	NPT1/16	22.0	8.0	13.0	7/16	12.8	10.8	4.0	15.0	100
ECC1/4N1	1/4	10.5	NPT1/8	19.5	8.5	13.0	7/16	12.8	10.8	5.0	18.0	100

# ELC series



Miniaturize Male Elbow

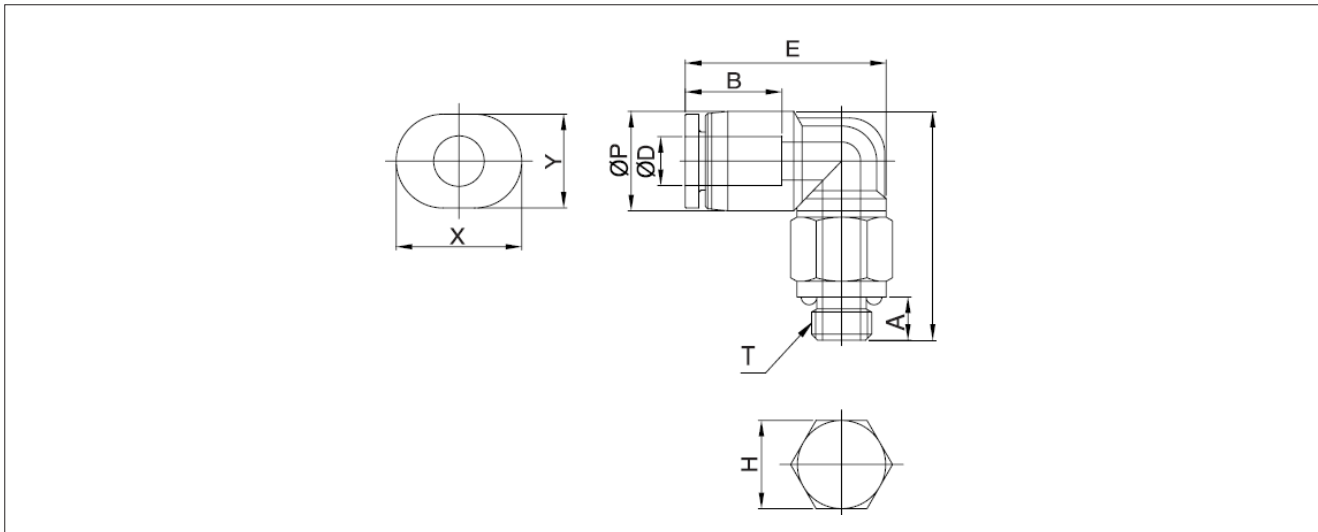
## Dimensions (R(PT) Thread)



Unit : mm

Model	ØD	ØP	T	L	E	A	B	H (Hex)	X	Y	Orifice	Weight (g)	Box (EA)
ELC03M3	3	7.6	M3X0.5	18.5	17.2	3.0	11.1	8	9.2	7.2	1.5	2.0	100
ELC03M5	3	7.6	M5X0.8	19.1	17.2	3.6	11.1	8	9.2	7.2	2.4	3.0	100
ELC03M6	3	7.6	M6X1.0	19.6	17.2	4.1	11.1	8	9.2	7.2	2.4	3.0	100
ELC04M3	4	8.7	M3X0.5	19.6	18.2	3.0	11.6	8	10.4	8.2	1.5	3.0	100
ELC04M5	4	8.7	M5X0.8	20.2	18.2	3.6	11.6	8	10.4	8.2	2.5	3.0	100
ELC04M6	4	8.7	M6X1.0	20.7	18.2	4.1	11.6	8	10.4	8.2	2.5	4.0	100
ELC0401	4	8.7	R(PT) 1/8	20.7	18.2	8.0	11.6	10	10.4	8.2	2.5	10.0	100
ELC06M5	6	10.8	M5X0.8	22.3	19.4	3.6	12.8	8	12.4	10.2	2.5	4.0	100
ELC06M6	6	10.8	M6X1.0	22.8	19.4	4.1	12.8	8	12.4	10.2	2.5	4.0	100
ELC0601	6	10.8	R(PT) 1/8	22.8	19.4	8.0	12.8	10	12.4	10.2	2.5	7.0	100

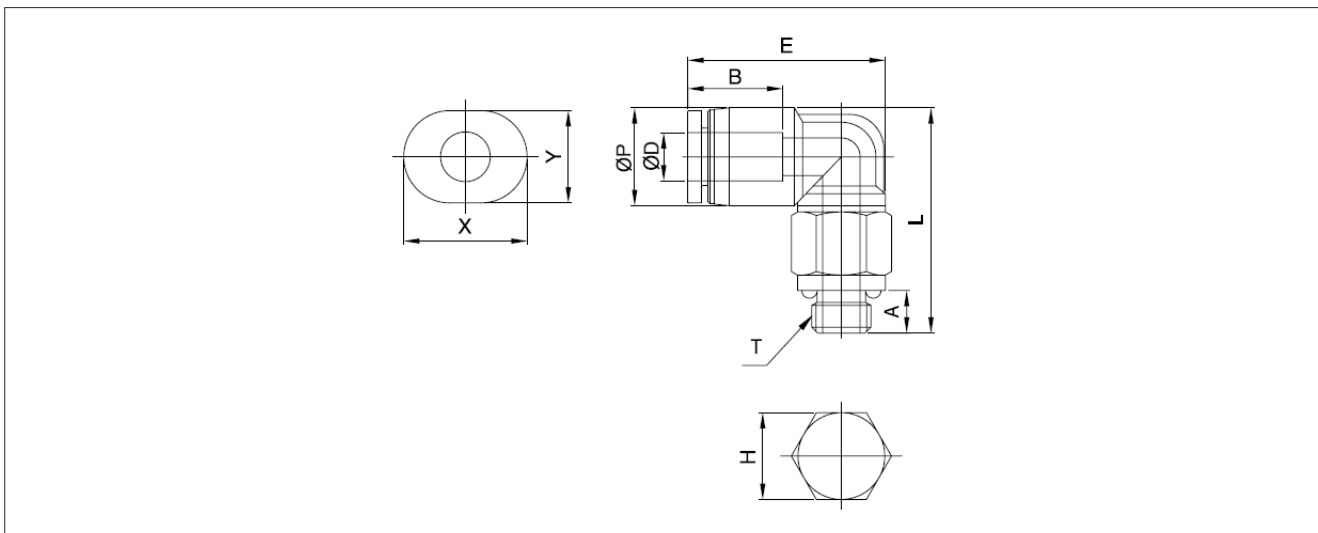
**Dimensions (G Thread)**



Unit : mm

Model	ØD	ØP	T	L	E	A	B	H (Hex)	X	Y	Orifice	Weight (g)	Box (EA)
ELC04G01	4	8.7	G 1/8	18.7	18.2	4.5	11.6	14	10.4	8.2	2.5	7.0	100
ELC06G01	6	10.8	G 1/8	20.8	19.4	4.5	12.8	14	12.4	10.2	2.5	6.0	100

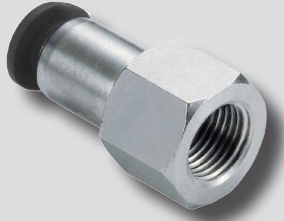
**Dimensions (NPT Thread)**



Unit : mm

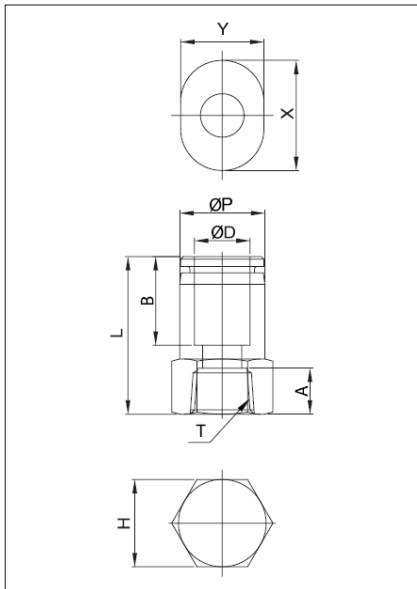
Model	ØD (INCH)	ØP	T	L	E	A	B	H (Hex)	X	Y	Orifice	Weight (g)	Box (EA)
ELC1/8U	1/8	7.6	UNF10/32	19.1	17.2	3.6	11.1	5/16	9.2	7.2	2.4	2.0	100
ELC1/8N0	1/8	7.6	NPT1/16	19.6	17.2	8.0	11.1	5/16	9.2	7.2	2.4	3.0	100
ELC1/8N1	1/8	7.6	NPT1/8	19.6	17.2	8.5	11.1	7/16	9.2	7.2	2.4	5.0	100
ELC1/8N2	1/8	7.6	NPT1/4	22.1	17.2	10.5	11.1	9/16	9.2	7.2	2.4	8.0	100
ELC5/32U	5/32	8.7	UNF10/32	20.2	18.2	3.6	11.6	5/16	10.4	8.2	2.5	5.0	100
ELC5/32N0	5/32	8.7	NPT1/16	20.7	18.2	8.0	11.6	5/16	10.4	8.2	2.5	5.0	100
ELC5/32N1	5/32	8.7	NPT1/8	20.7	18.2	8.5	11.6	7/16	10.4	8.2	2.5	6.0	100
ELC1/4U	1/4	11.3	UNF10/32	22.8	19.4	3.6	13.5	5/16	12.8	10.8	2.5	10.0	100
ELC1/4N0	1/4	11.3	NPT1/16	23.3	19.4	8.0	13.5	5/16	12.8	10.8	3.5	12.0	100
ELC1/4N1	1/4	11.3	NPT1/8	23.3	19.4	8.5	13.5	7/16	12.8	10.8	3.5	16.0	100

# EFCC series



Miniaturize Female Straight

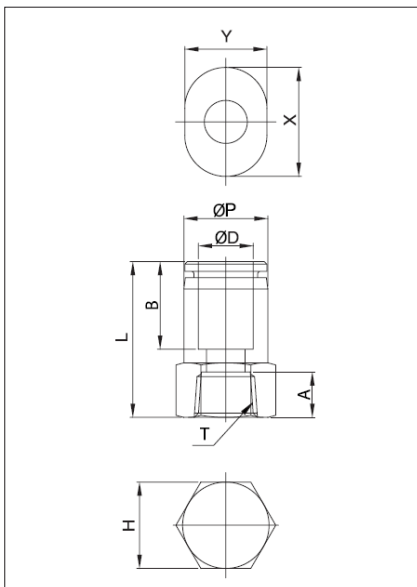
## Dimensions (Rc(PT) Thread)



Unit : mm

Model	ØD	ØP	T	L	A	B	H (Hex)	X	Y	Orifice	Weight (g)	Box (EA)
EFCC03M3	3	7.5	M3X0.5	17.3	4.0	11.1	8	9.2	7.2	2.5	4.0	100
EFCC03M5	3	7.5	M5X0.8	18.8	6.0	11.1	8	9.2	7.2	2.5	4.0	100
EFCC03M6	3	7.5	M6X1.0	18.8	6.0	11.1	8	9.2	7.2	2.5	5.0	100
EFCC04M3	4	8.0	M3X0.5	18.2	4.0	11.6	8	10.4	8.2	2.5	4.0	100
EFCC04M5	4	8.0	M5X0.8	19.7	6.0	11.6	8	10.4	8.2	3.0	4.0	100
EFCC04M6	4	8.0	M6X1.0	19.7	6.0	11.6	8	10.4	8.2	3.0	5.0	100
EFCC0401	4	8.0	Rc(PT) 1/8	23.2	8.5	11.6	12	10.4	8.2	3.0	7.0	100
EFCC06M5	6	10.0	M5X0.8	21.4	6.0	12.8	10	12.4	10.2	4.0	5.0	100
EFCC06M6	6	10.0	M6X1.0	21.4	6.0	12.8	10	12.4	10.2	4.0	5.0	100
EFCC0601	6	10.0	Rc(PT) 1/8	25.4	8.5	12.8	12	12.4	10.2	4.0	7.0	100

## Dimensions (NPT Thread)



Unit : mm

Model	ØD (INCH)	ØP	T	L	A	B	H (Hex)	X	Y	Orifice	Weight (g)	Box (EA)
EFCC1/8U	1/8	7.5	UNF10/32	18.8	6.0	11.1	5/16	9.2	7.2	2.5	2.0	100
EFCC1/8N0	1/8	7.5	NPT1/16	20.5	8.0	11.1	13/32	9.2	7.2	2.5	3.0	100
EFCC1/8N1	1/8	7.5	NPT1/8	22.5	8.5	11.3	7/16	9.2	7.2	2.5	3.0	100
EFCC1/8N2	1/8	7.5	NPT1/4	25.3	10.5	11.3	11/16	9.2	7.2	2.5	7.0	100
EFCC5/32U	5/32	8.0	UNF10/32	19.7	6.0	11.6	5/16	10.4	8.2	3.0	5.0	100
EFCC5/32N0	5/32	8.5	NPT1/16	21.7	8.0	11.6	13/32	10.4	8.2	3.0	6.0	100
EFCC5/32N1	5/32	8.5	NPT1/8	22.9	8.5	11.8	7/16	10.4	8.2	3.0	6.0	100
EFCC1/4U	1/4	10.5	UNF10/32	20.5	6.0	13.0	7/16	12.8	10.8	2.5	6.0	100
EFCC1/4N0	1/4	10.5	NPT1/16	22.5	8.0	13.0	7/16	12.8	10.8	5.0	7.0	100
EFCC1/4N1	1/4	10.5	NPT1/8	23.8	8.5	13.0	7/16	12.8	10.8	5.0	8.0	100

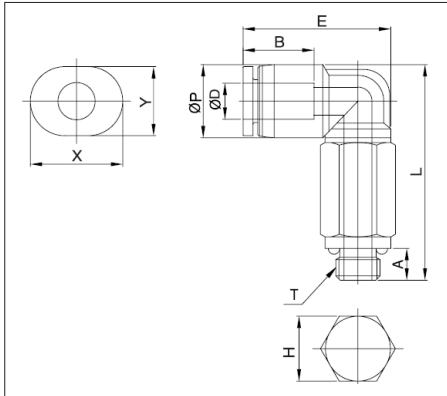
# ELLC series



Miniaturize Extended Male Elbow

## Dimensions (R(PT) Thread)

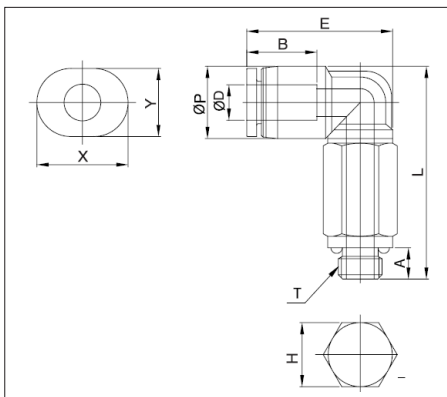
Unit : mm



Model	ØD	ØP	T	L	E	A	B	H (Hex)	X	Y	Orifice	Weight (g)	Box (EA)
ELLC03M3	3	7.6	M3X0.5	25.6	17.5	3.0	11.3	8	9.2	7.2	1.5	3.0	100
ELLC03M5	3	7.6	M5X0.8	27.7	17.5	3.6	11.3	8	9.2	7.2	2.5	8.0	100
ELLC03M6	3	7.6	M6X1.0	28.2	17.5	4.1	11.3	8	9.2	7.2	2.5	8.0	100
ELLC04M3	4	8.7	M3X0.5	29.2	18.5	3.0	11.8	8	10.4	8.2	1.5	7.0	100
ELLC04M5	4	8.7	M5X0.8	29.8	18.5	3.6	11.8	8	10.4	8.2	2.5	8.0	100
ELLC04M6	4	8.7	M6X1.0	30.3	18.5	4.1	11.8	8	10.4	8.2	2.5	8.0	100
ELLC0401	4	8.7	R(PT) 1/8	33.7	18.5	8.0	11.8	10	10.4	8.2	2.5	13.0	100
ELLC06M5	6	10.8	M5X0.8	33.8	19.6	3.6	12.9	8	12.4	10.2	3.5	9.0	100
ELLC06M6	6	10.8	M6X1.0	34.3	19.6	4.1	12.9	8	12.4	10.2	2.5	9.0	100
ELLC0601	6	10.8	R(PT) 1/8	37.8	19.6	8.0	12.9	10	12.4	10.2	3.5	14.0	100

## Dimensions (NPT Thread)

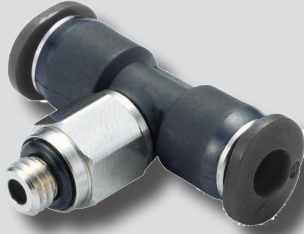
Unit : mm



Model	ØD (INCH)	ØP	T	L	E	A	B	H (Hex)	X	Y	Orifice	Weight (g)	Box (EA)
ELLC1/8U	1/8	7.6	UNF10/32	27.7	17.5	3.6	11.3	5/16	9.2	7.2	2.4	8.0	100
ELLC1/8N0	1/8	7.6	NPT1/16	28.2	17.5	8.0	11.3	5/16	9.2	7.2	2.4	9.0	100
ELLC1/8N1	1/8	7.6	NPT1/8	28.2	17.5	8.5	11.3	7/16	9.2	7.2	2.4	11.0	100
ELLC5/32U	5/32	8.7	UNF10/32	29.8	18.5	3.6	11.8	5/16	10.4	8.2	2.5	8.0	100
ELLC5/32N0	5/32	8.7	NPT1/16	33.7	18.5	8.0	11.8	5/16	10.4	8.2	2.5	9.0	100
ELLC5/32N1	5/32	8.7	NPT1/8	33.7	18.5	8.5	11.8	7/16	10.4	8.2	2.5	13.0	100
ELLC1/4U	1/4	10.8	UNF10/32	34.3	19.6	3.6	12.9	5/16	12.4	10.2	2.5	9.0	100
ELLC1/4N0	1/4	10.8	NPT1/16	38.3	19.6	8.0	12.9	5/16	12.4	10.2	3.5	11.0	100
ELLC1/4N1	1/4	10.8	NPT1/8	38.3	19.6	8.5	12.9	7/16	12.4	10.2	3.5	14.0	100

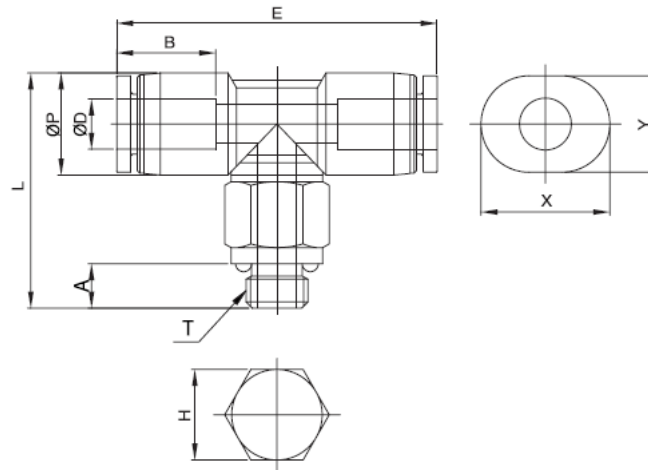


# ETC series



Miniaturize Male Branch Tee

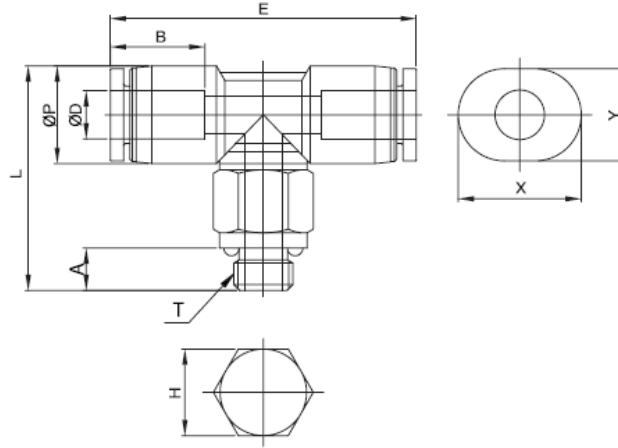
## Dimensions (R(PT) Thread)



Unit : mm

Model	ØD	ØP	T	L	E	A	B	H (Hex)	X	Y	Orifice	Weight (g)	Box (EA)
ETC03M3	3	7.6	M3X0.5	18.5	26.6	3.0	11.1	8	9.2	7.2	1.5	2.0	100
ETC03M5	3	7.6	M5X0.8	19.1	26.6	3.6	11.1	8	9.2	7.2	2.4	3.0	100
ETC03M6	3	7.6	M6X1.0	19.6	26.6	4.1	11.1	8	9.2	7.2	2.4	4.0	100
ETC04M3	4	8.7	M3X0.5	19.6	28.6	3.0	11.6	8	10.4	8.2	1.5	4.0	100
ETC04M5	4	8.7	M5X0.8	20.2	28.6	3.6	11.6	8	10.4	8.2	2.5	4.0	100
ETC04M6	4	8.7	M6X1.0	20.7	28.6	4.1	11.6	8	10.4	8.2	3.0	5.0	100
ETC0401	4	8.7	R(PT) 1/8	20.7	28.6	8.0	11.6	10	10.4	8.2	3.0	7.0	100
ETC06M5	6	10.8	M5X0.8	22.3	31.0	3.6	12.8	8	12.4	10.2	2.5	6.0	100
ETC06M6	6	10.8	M6X1.0	22.8	31.0	4.1	12.8	8	12.4	10.2	3.0	6.0	100
ETC0601	6	10.8	R(PT) 1/8	22.8	31.0	8.0	12.8	10	12.4	10.2	3.0	8.0	100

**Dimensions (NPT Thread)**



Unit : mm

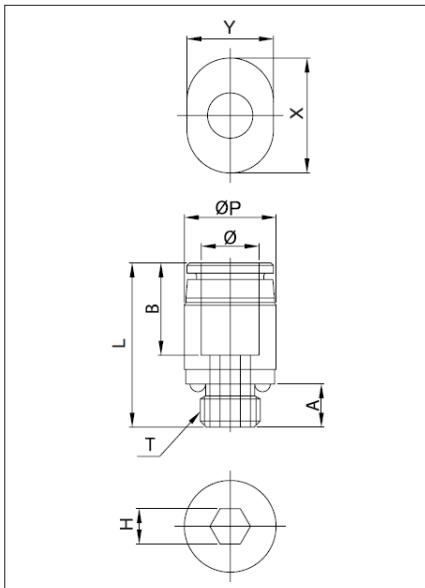
Model	ØD (INCH)	ØP	T	L	E	A	B	H (Hex)	X	Y	Orifice	Weight (g)	Box (EA)
ETC1/8U	1/8	7.6	UNF10/32	19.1	26.6	3.6	11.1	5/16	9.2	7.2	2.4	2.0	100
ETC1/8N0	1/8	7.6	NPT1/16	19.6	26.6	8.0	11.1	5/16	9.2	7.2	2.4	3.0	100
ETC1/8N1	1/8	7.6	NPT1/8	19.6	26.6	8.5	11.1	7/16	9.2	7.2	2.4	5.0	100
ETC5/32U	5/32	8.7	UNF10/32	20.2	28.6	3.6	11.6	5/16	10.4	8.2	2.5	5.0	100
ETC5/32N0	5/32	8.7	NPT1/16	20.7	28.6	8.0	11.6	5/16	10.4	8.2	3.0	5.0	100
ETC5/32N1	5/32	8.7	NPT1/8	20.7	28.6	8.5	11.6	7/16	10.4	8.2	3.0	6.0	100
ETC1/4U	1/4	11.3	UNF10/32	22.8	32.3	3.6	13.5	5/16	12.8	10.8	2.5	10.0	100
ETC1/4N0	1/4	11.3	NPT1/16	23.3	32.3	8.0	13.5	5/16	12.8	10.8	3.5	12.0	100
ETC1/4N1	1/4	11.3	NPT1/8	23.3	32.3	8.5	13.5	7/16	12.8	10.8	3.5	16.0	100

# EOCC series



Miniaturize Round Male Straight

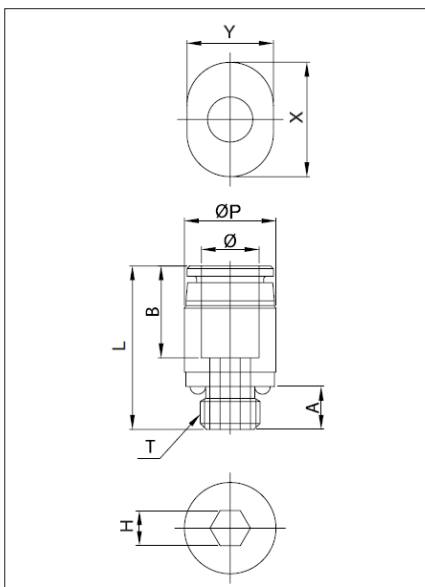
## Dimensions (R(PT) Thread)



Unit : mm

Model	ØD	ØP	T	L	A	B	H (Hex)	X	Y	Orifice	Weight (g)	Box (EA)
EOCC03M3	3	7.0	M3X0.5	17.1	4.0	11.1	1.5	9.2	7.2	1.5	2.0	100
EOCC03M5	3	7.0	M5X0.8	17.7	4.6	11.1	2.0	9.2	7.2	2.0	4.0	100
EOCC03M6	3	8.0	M6X1.0	18.2	5.1	11.1	2.0	9.2	7.2	2.0	4.0	100
EOCC04M3	4	8.0	M3X0.5	17.7	4.0	11.6	1.5	10.4	8.2	1.5	3.0	100
EOCC04M5	4	8.0	M5X0.8	18.2	4.6	11.6	2.5	10.4	8.2	2.5	4.0	100
EOCC04M6	4	8.0	M6X1.0	18.8	5.1	11.6	3.0	10.4	8.2	3.0	4.0	100
EOCC0401	4	10.0	R(PT) 1/8	17.3	8.0	11.6	3.0	10.4	8.2	3.0	6.0	100
EOCC06M5	6	10.0	M5X0.8	19.4	4.6	12.8	2.5	12.4	10.2	2.5	4.0	100
EOCC06M6	6	10.0	M6X1.0	19.9	5.1	12.8	3.0	12.4	10.2	3.0	4.0	100
EOCC0601	6	10.0	R(PT) 1/8	19.6	8.0	12.8	4.0	12.4	10.2	4.0	5.0	100

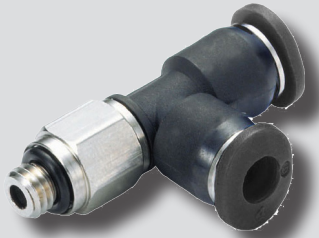
## Dimensions (NPT Thread)



Unit : mm

Model	ØD (INCH)	ØP	T	L	A	B	H (Hex)	X	Y	Orifice	Weight (g)	Box (EA)
EOCC1/8U	1/8	7.0	UNF10/32	17.7	4.6	11.1	3/32	9.2	7.2	2.4	2.0	100
EOCC1/8N0	1/8	8.0	NPT1/16	18.0	8.0	11.1	3/32	9.2	7.2	2.4	5.0	100
EOCC1/8N1	1/8	11.0	NPT1/8	16.3	8.5	11.1	3/32	9.2	7.2	2.4	6.0	100
EOCC5/32U	5/32	8.0	UNF10/32	18.2	4.6	11.6	3/32	10.4	8.2	2.4	3.0	100
EOCC5/32N0	5/32	8.0	NPT1/16	19.0	8.0	11.6	3/32	10.4	8.2	2.4	4.0	100
EOCC5/32N1	5/32	11.0	NPT1/8	16.3	8.5	11.6	3/32	10.4	8.2	2.4	9.0	100
EOCC1/4U	1/4	10.5	UNF10/32	19.3	4.6	13.0	3/32	12.8	10.8	2.4	12.0	100
EOCC1/4N0	1/4	10.5	NPT1/16	22.0	8.0	13.0	5/32	12.8	10.8	4.0	16.0	100
EOCC1/4N1	1/4	10.5	NPT1/8	19.5	8.5	13.0	5/32	12.8	10.8	4.0	18.0	100

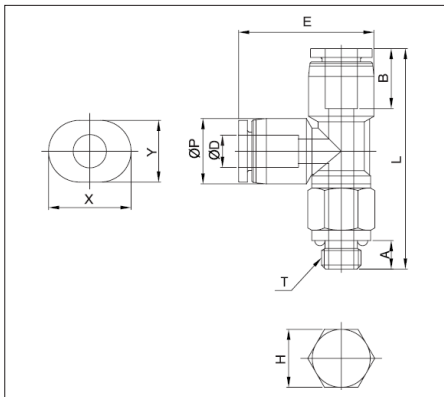
# ESTC series



Miniaturize Male Run Tee

## Dimensions (R(PT) Thread)

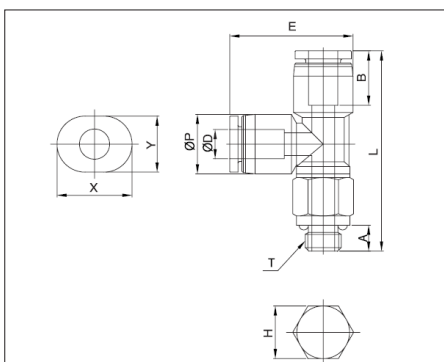
Unit : mm



Model	ØD	ØP	T	L	E	A	B	H (Hex)	X	Y	Orifice	Weight (g)	Box (EA)
ESTC03M3	3	7.6	M3X0.5	28.3	13.3	3.0	11.1	8	9.2	7.2	1.5	2.0	100
ESTC03M5	3	7.6	M5X0.8	28.9	13.3	3.6	11.1	8	9.2	7.2	2.4	3.0	100
ESTC03M6	3	7.6	M6X1.0	29.4	13.3	4.1	11.1	8	9.2	7.2	2.4	4.0	100
ESTC04M3	4	8.7	M3X0.5	29.8	14.2	3.0	11.6	8	10.4	8.2	1.5	4.0	100
ESTC04M5	4	8.7	M5X0.8	30.4	14.2	3.6	11.6	8	10.4	8.2	2.5	4.0	100
ESTC04M6	4	8.7	M6X1.0	30.9	14.2	4.1	11.6	8	10.4	8.2	3.0	5.0	100
ESTC0401	4	8.7	R(PT) 1/8	30.9	14.2	8.0	11.6	10	10.4	8.2	3.0	7.0	100
ESTC06M5	6	10.8	M5X0.8	33.5	16.5	3.6	12.8	8	12.4	10.2	2.5	6.0	100
ESTC06M6	6	10.8	M6X1.0	34.0	16.5	4.1	12.8	8	12.4	10.2	3.0	6.0	100
ESTC0601	6	10.8	R(PT) 1/8	34.0	16.5	8.0	12.8	10	12.4	10.2	3.0	8.0	100

## Dimensions (NPT Thread)

Unit : mm



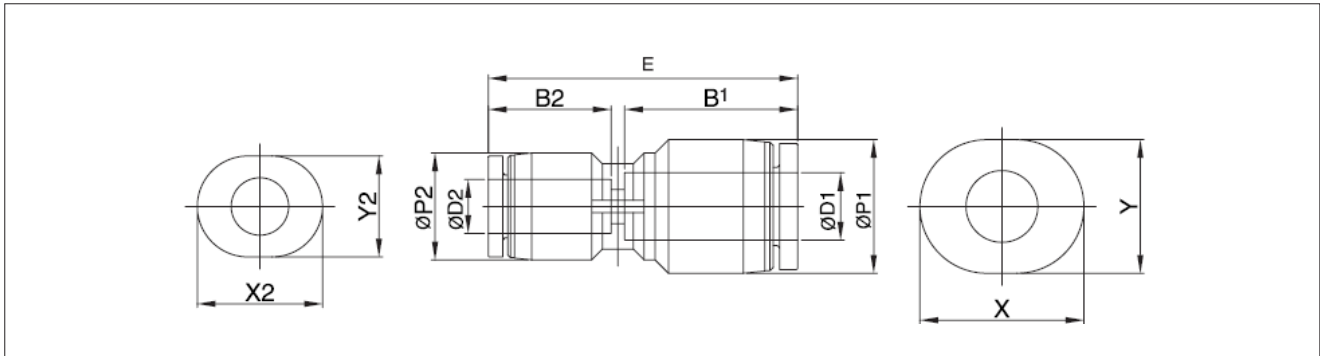
Model	ØD (INCH)	ØP	T	L	E	A	B	H (Hex)	X	Y	Orifice	Weight (g)	Box (EA)
ESTC1/8U	1/8	7.6	UNF10/32	28.9	13.3	3.6	11.1	5/16	9.2	7.2	2.4	2.0	100
ESTC1/8N0	1/8	7.6	NPT1/16	29.4	13.3	8.0	11.1	5/16	9.2	7.2	2.4	3.0	100
ESTC1/8N1	1/8	7.6	NPT1/8	29.4	13.3	8.5	11.1	7/16	9.2	7.2	2.4	5.0	100
ESTC5/32U	5/32	8.7	UNF10/32	30.4	14.2	3.6	11.6	5/16	10.4	8.2	2.5	5.0	100
ESTC5/32N0	5/32	8.7	NPT1/16	30.9	14.2	8.0	11.6	5/16	10.4	8.2	3.0	5.0	100
ESTC5/32N1	5/32	8.7	NPT1/8	30.9	14.2	8.5	11.6	7/16	10.4	8.2	3.0	6.0	100
ESTC1/4U	1/4	11.8	UNF10/32	34.7	17.6	3.6	13.5	5/16	12.8	10.8	2.5	10.0	100
ESTC1/4N0	1/4	11.8	NPT1/16	35.2	17.6	8.0	13.5	5/16	12.8	10.8	4.0	12.0	100
ESTC1/4N1	1/4	11.8	NPT1/8	35.2	17.6	8.5	13.5	7/16	12.8	10.8	3.5	16.0	100

# EURC series



Miniaturize Reducer

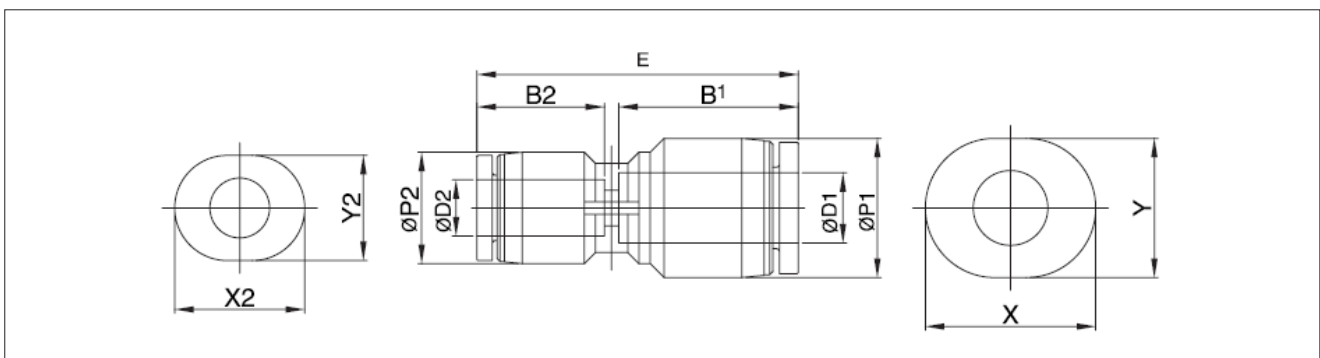
## Dimensions (Metric)



Unit : mm

Model	ØD1	ØD2	ØP1	ØP2	E	B1	B2	X1	Y1	X2	Y2	Orifice	Weight (g)	Box (EA)
EURC0304	4	3	8.5	7.6	23.8	11.6	11.1	10.4	8.2	9.2	7.2	2.4	2.0	100
EURC0306	6	3	10.7	7.6	24.2	12.8	11.1	12.4	10.2	9.2	7.2	2.5	2.0	100
EURC0406	6	4	10.7	8.5	26.3	12.8	11.6	12.4	10.2	10.4	8.2	3.0	3.0	100

## Dimensions (Inch)



Unit : mm

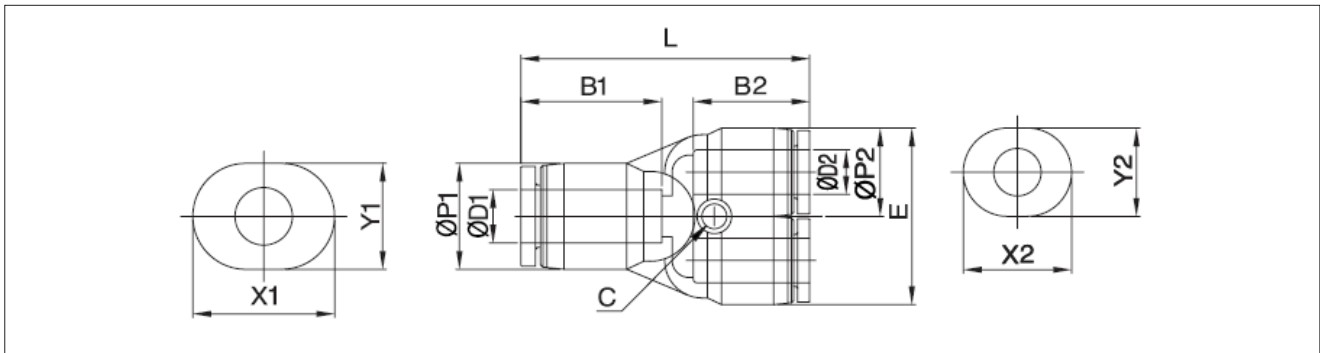
Model	ØD1	ØD2	ØP1	ØP2	E	B1	B2	X1	Y1	X2	Y2	Orifice	Weight (g)	Box (EA)
EURC5/32 1/8	5/32	1/8	8.7	7.6	23.8	11.6	11.1	10.4	8.2	9.2	7.2	2.4	2.0	100
EURC1/4 1/8	1/4	1/8	11.3	7.6	24.2	13.5	11.1	12.8	10.8	9.2	7.2	3.0	3.0	100
EURC1/4 5/32	1/4	5/32	11.3	8.7	26.3	13.5	11.6	12.8	10.8	10.4	8.2	3.0	3.0	100

# ERYC series



Miniaturize Union Y

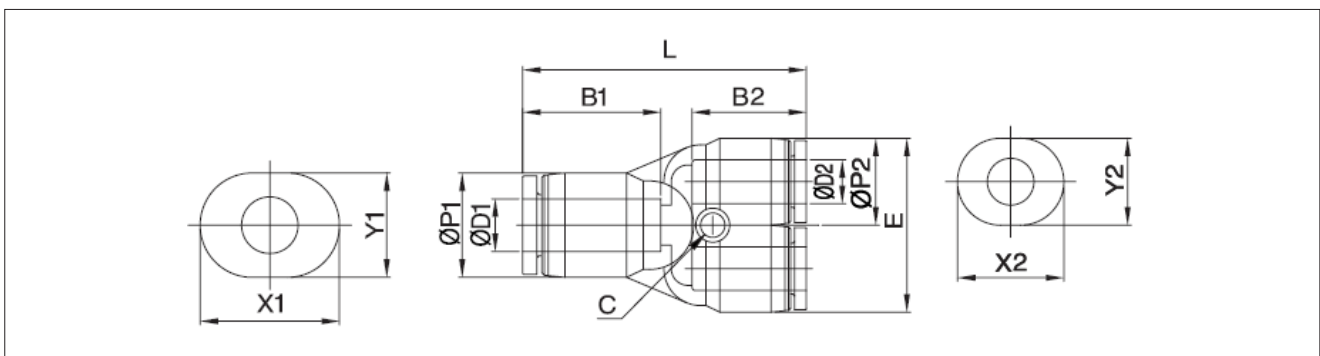
## Dimensions (Metric)



Unit : mm

Model	ØD1	ØD2	ØP1	ØP2	L	E	C	B1	B2	X1	Y1	X2	Y2	Orifice	Weight (g)	Box (EA)
ERYC0304	4	3	8.2	7.6	27.5	15.2	3.2	11.8	11.3	10.4	8.2	9.2	7.2	2.0	4.0	100
ERYC0306	6	3	10.8	7.6	28.7	15.2	3.2	12.9	11.3	12.4	10.2	9.2	7.2	2.4	4.0	100
ERYC0406	6	4	10.8	8.7	29.2	17.4	3.2	12.9	11.8	12.4	10.2	10.4	8.2	3.0	4.0	100

## Dimensions (Inch)



Unit : mm

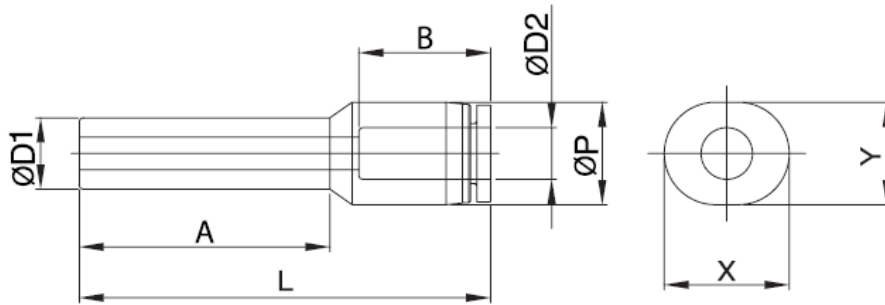
Model	ØD1 (INCH)	ØD2 (INCH)	ØP1	ØP2	L	E	C	B1	B2	X1	Y1	X2	Y2	Orifice	Weight (g)	Box (EA)
ERYC5/32 1/8	5/32	1/8	8.7	7.6	27.5	15.2	3.2	11.8	11.3	10.4	8.2	9.2	7.2	2.4	4.0	100
ERYC1/4 1/8	1/4	1/8	11.3	7.6	29.3	15.2	3.2	12.9	11.3	12.8	10.8	9.2	7.2	2.5	5.0	100
ERYC1/4 5/32	1/4	5/32	11.3	8.7	29.8	17.4	3.2	12.9	11.8	12.8	10.8	10.4	8.2	3.0	5.0	100

# ERC series



Miniaturize Plug-In Reducer

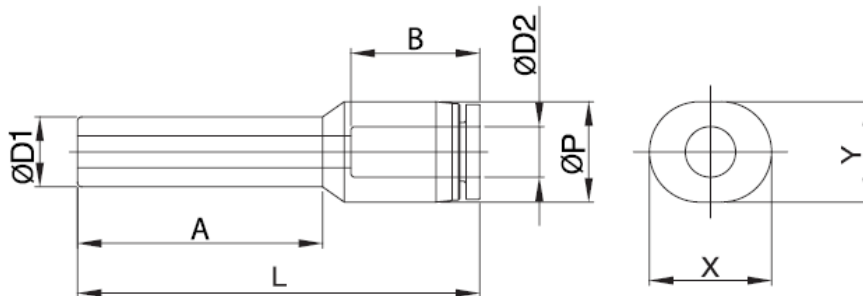
## Dimensions (Metric)



Unit : mm

Model	ØD1	ØD2	ØP	L	A	B	X	Y	Orifice	Weight (g)	Box (EA)
ERC0304	4	3	7.6	30.4	18.0	11.3	9.2	7.2	2.4	1.0	100
ERC0306	6	3	7.6	32.0	21.6	11.3	9.2	7.2	2.4	2.0	100
ERC0406	6	4	8.4	33.7	21.8	11.8	10.4	8.2	3.0	2.0	100

## Dimensions (Inch)



Unit : mm

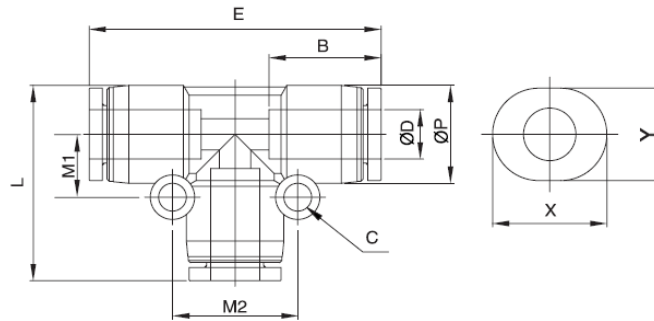
Model	ØD1 (INCH)	ØD2 (INCH)	ØP	L	A	B	X	Y	Orifice	Weight (g)	Box (EA)
ERC5/32 1/8	5/32	1/8	7.6	30.4	18.0	11.3	9.2	7.2	2.4	1.0	100
ERC1/4 1/8	1/4	1/8	7.6	32.0	21.6	11.3	9.2	7.2	2.4	2.0	100
ERC1/4 5/32	1/4	5/32	8.4	33.7	21.8	11.8	10.4	8.2	3.0	3.0	100

# EUTC series



Miniaturize Union Tee

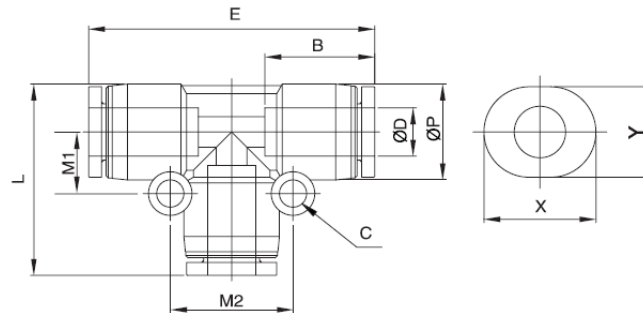
## Dimensions (Metric)



Unit : mm

Model	ØD	ØP	L	E	C	B	M1	M2	X	Y	Orifice	Weight (g)	Box (EA)
EUTC03	3	7.6	17.1	26.6	3.2	11.1	5.4	10.7	9.2	7.2	2.4	2.0	100
EUTC04	4	8.5	18.5	28.6	3.2	11.6	5.8	11.6	10.4	8.2	3.0	3.0	100
EUTC06	6	10.7	21.8	33.3	3.2	12.8	6.9	13.8	12.4	10.2	4.0	5.0	100

## Dimensions (Inch)



Unit : mm

Model	ØD (INCH)	ØP	L	E	C	B	M1	M2	X	Y	Orifice	Weight (g)	Box (EA)
EUTC1/8	1/8	7.6	17.1	26.6	3.2	11.1	5.4	10.7	9.2	7.2	2.4	3.0	100
EUTC5/32	5/32	8.5	18.5	28.6	3.2	11.6	5.8	11.6	10.4	8.2	3.0	4.0	100
EUTC1/4	1/4	10.7	23.2	35.3	3.2	13.5	7.0	14.0	12.8	10.8	5.0	6.0	100

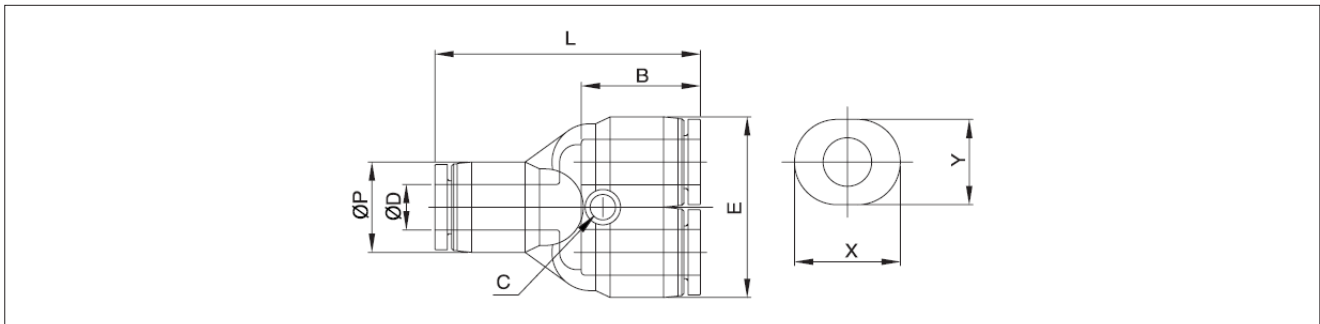


# EUYC series



Miniaturize Reducer Y

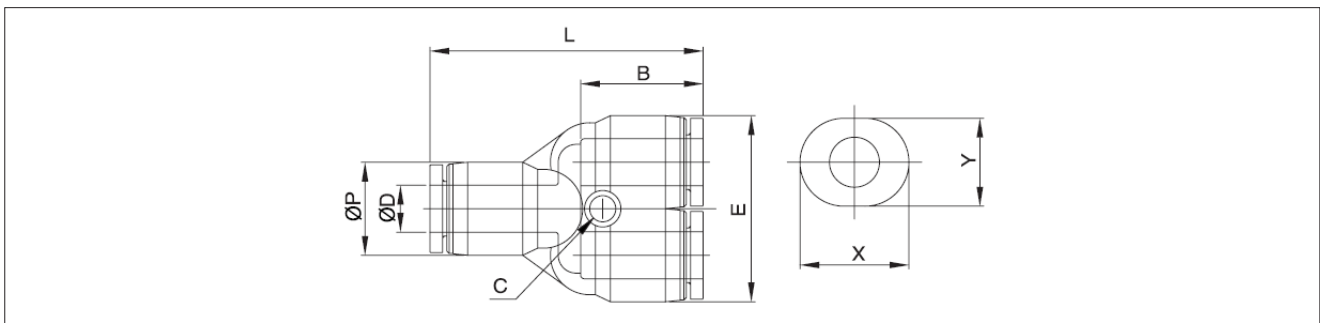
## Dimensions (Metric)



Unit : mm

Model	ØD	ØP	L	E	C	B	X	Y	Orifice	Weight (g)	Box (EA)
EUYC03	3	7.6	26.8	15.2	3.2	11.1	9.2	7.2	2.4	4.0	100
EUYC04	4	8.7	28.0	17.4	3.2	11.8	10.4	8.2	3.0	3.0	100
EUYC06	6	10.8	30.8	21.6	3.2	12.9	12.4	10.2	4.0	5.0	100

## Dimensions (Inch)



Unit : mm

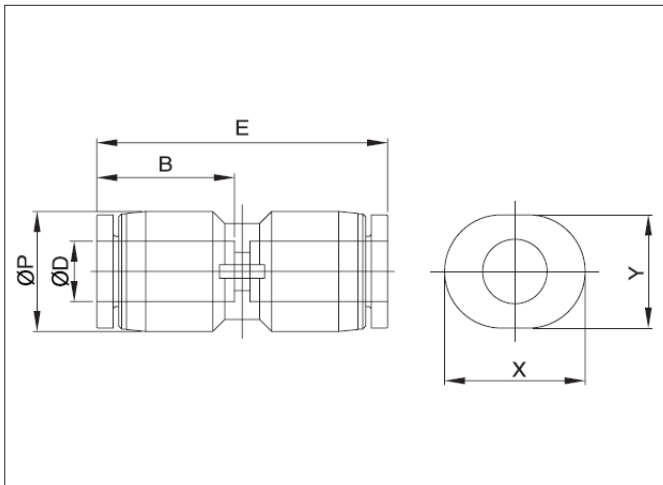
Model	ØD (INCH)	ØP	L	E	C	B	X	Y	Orifice	Weight (g)	Box (EA)
EUYC1/8	1/8	7.6	26.8	15.2	3.2	11.1	9.2	7.2	2.4	4.0	100
EUYC5/32	5/32	8.7	28.0	17.4	3.2	11.8	10.4	8.2	3.0	3.0	100
EUYC1/4	1/4	11.3	30.8	22.6	3.2	13.5	12.8	10.8	5.0	5.0	100

# EUCC series



Miniaturize Union Straight

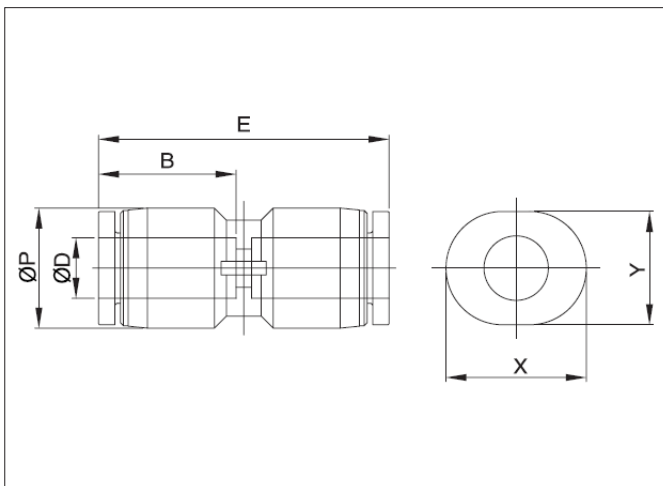
## Dimensions (Metric)



Unit : mm

Model	ØD	ØP	E	B	X	Y	Orifice	Weight (g)	Box (EA)
EUCC03	3	7.6	23.2	11.1	9.2	7.2	2.4	1.0	100
EUCC04	4	8.5	24.5	11.6	10.4	8.2	3.0	2.0	100
EUCC06	6	10.7	26.6	12.8	12.4	10.2	4.0	3.0	100

## Dimensions (Inch)



Unit : mm

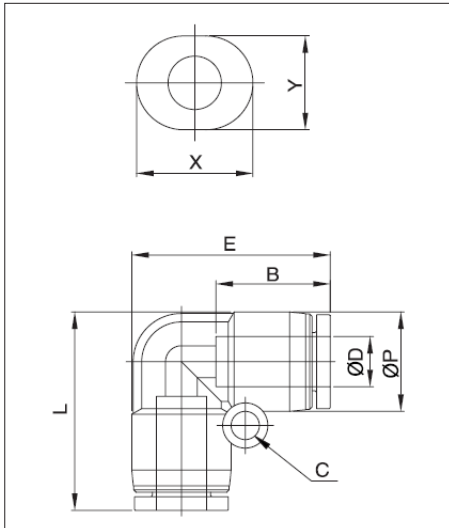
Model	ØD (INCH)	ØP	E	B	X	Y	Orifice	Weight (g)	Box (EA)
EUCC1/8	1/8	7.6	23.2	11.1	9.2	7.2	2.4	1.0	100
EUCC5/32	5/32	8.7	24.5	11.6	10.4	8.2	3.0	2.0	100
EUCC1/4	1/4	11.3	28.6	13.5	12.8	10.8	5.0	3.0	100

# EULC series



Miniaturize Union Elbow

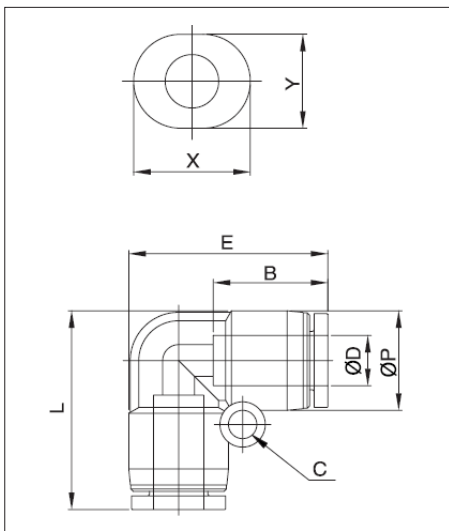
## Dimensions (Metric)



Unit : mm

Model	ØD	ØP	L	E	C	B	X	Y	Orifice	Weight (g)	Box (EA)
EULC03	3	7.6	17.1	17.1	3.2	11.1	9.2	7.2	2.4	1.0	100
EULC04	4	8.5	18.5	18.5	3.2	11.6	10.4	8.2	3.0	2.0	100
EULC06	6	10.7	21.8	21.8	3.2	12.8	12.4	10.2	4.0	4.0	100

## Dimensions (Inch)



Unit : mm

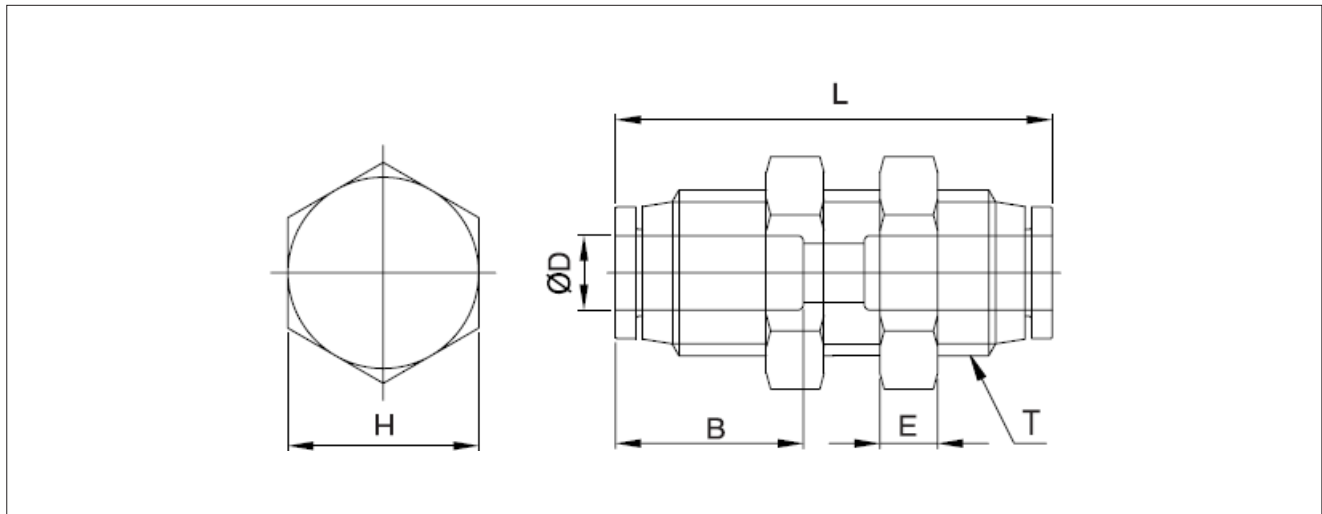
Model	ØD (INCH)	ØP	L	E	C	B	X	Y	Orifice	Weight (g)	Box (EA)
EULC1/8	1/8	7.6	17.1	17.1	3.2	11.1	9.2	7.2	2.4	2.0	100
EULC5/32	5/32	8.7	18.5	18.5	3.2	11.6	10.4	8.2	3.0	3.0	100
EULC1/4	1/4	11.3	23.2	23.2	3.2	13.5	12.8	10.8	5.0	5.0	100

# EPCC series



Miniaturize Bulkhead Union

## Dimensions (Metric)



Unit : mm

Model	ØD	T	L	E	B	H (Hex)	Orifice	Weight (g)	Box (EA)
EPCC03	3	M8X0.75	23.6	2	11.3	10	2.0	8.0	100
EPCC04	4	M10X1.0	24.5	3.5	11.8	12	3.0	10.2	100
EPCC06	6	M12X1.0	27.3	4	12.9	14	5.0	14.2	100