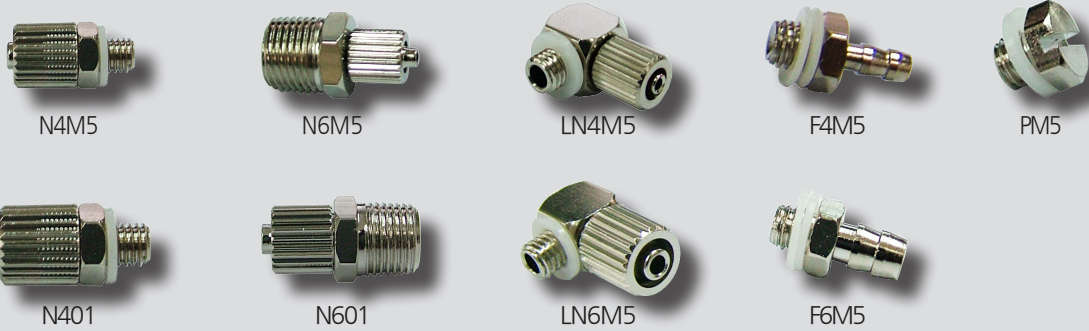


# Two Touch Fitting



## How to Order

N 4 M5  
 ①      ②      ③

### ① Series

N	Straight type metal two touch fitting
LN	L type metal two touch fitting
F	Straight type metal two touch fitting (Direct mounting type)
P	Metal plug

### ② Tube outer diameter

Nil	None (PM5 Model)
4	4Ø TUBE
6	6Ø TUBE

### ③ Connection

M5	M5×0.8
01	R(PT) 1/8

※ 01 type is not available for LN, F, P series.

## Specifications

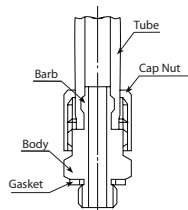
Fluid	Air	
Applicable tube material	Nylon	Polyurethane
Applicable tube size	Ø4-Ø2.5, Ø6-Ø4	
Max. working pressure (at 20°)	15kgf/cm <sup>2</sup> (1.5MPa)	8kgf/cm <sup>2</sup> (0.8MPa)
Temperature range	0-60°C	
Connection	M5, R(PT)1/8	

## 특징

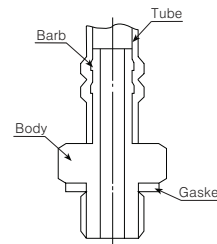
- Suitable for small equipment and narrow piping space.
- Various mounting type
- Nylon tubing, polyurethane tubing available.

## 구조도

Straight Type Metal Two Touch Fitting

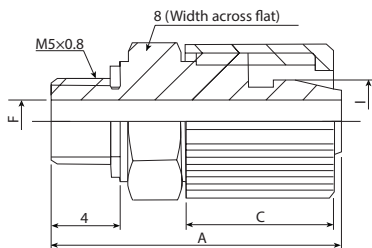


Straight Type Metal Two Touch Fitting (Direct Mounting Type)



Dimensions

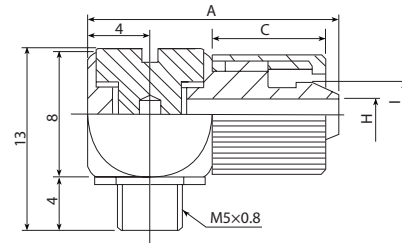
N4M5, N6M5



Unit:mm

Model	A	C	ØF	ØI
N4M5	15.5	7	1.5	3.5
N6M5	17.5	8.5	2.4	4.9

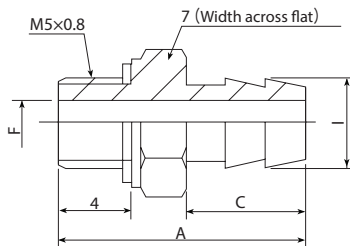
LN4M5, LN6M5



Unit:mm

Model	A	C	ØH	ØI
LN4M5	16	7	1.5	3.5
LN6M5	18	8.5	2.4	4.9

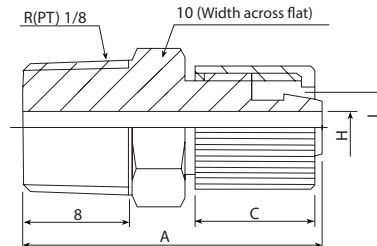
F4M5, F6M5



Unit:mm

Model	A	C	ØF	ØI
F4M5	13.8	6.8	1.5	3.5
F6M5	14	7	2.4	4.9

N401, N601



Unit:mm

Model	A	C	ØH	ØI
N401	19.5	7	1.5	3.5
N601	20.5	8.5	2.5	4.9

PM5

