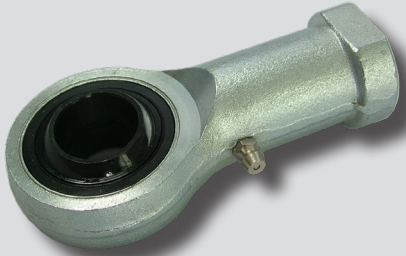


JF series



Features

- Mainly used in various industrial equipment such as rotational motion of control mechanism or link mechanism.
- Smooth power transmit even under a condition with traction load or compression load.
- Superior performance in rotational and oscillation motions.

How to Order

JF 10

① ②

① Series

JF	Rod end bearing (Female thread, lubricated type)
----	---

② Thread size

Size	Thread size	Pneumatic cylinder bore size	Hydraulic cylinder bore size	Size	Thread size	Pneumatic cylinder bore size	Hydraulic cylinder bore size
5	M5×0.8	Ø16	-	18	M18×1.5	Ø50, Ø63	-
6	M6×1.0	-	-	20	M20×1.5	-	Ø40B/50C type
8	M8×1.25	Ø20	-	22	M22×1.5	Ø80	-
10	M10×1.25	Ø25, Ø30, Ø32	-	24	M24×1.5	-	Ø50B/63C type
12	M12×1.75	-	-	25	M26×1.5	Ø100	-
14	M14×1.5	Ø40	-	30	M30×1.5	Ø125, Ø140	Ø63B/80C type
16	M16×1.5	-	Ø40C type	35	M36×1.5	Ø150, Ø160	-

Tolerance of Inner Ring

Unit:mm

Nominal bore mm		Bore diameter deviation μm		Width deviation μm	
Above	Below	Max.	Min.	Max.	Min.
3	6	+30	0	0	-100
6	10	+30	0	0	-120
10	18	+30	0	0	-150
18	25	0	-10	0	-200
25	50	0	-12	0	-200

Recommended Shaft Tolerance

Unit:mm

Nominal shaft diameter mm		Tolerance μm					
Above	Below	m5		n6		p6	
		Max.	Min.	Max.	Min.	Max.	Min.
3	6	+9	+4	+16	+8	+20	+12
6	10	+12	+6	+19	+10	+24	+15
10	18	+15	+7	+23	+12	+29	+18
18	25	0 (h6)	-13	-	-	+21 (m6)	+8
25	50	0 (h6)	-16	-	-	+25 (m6)	+9

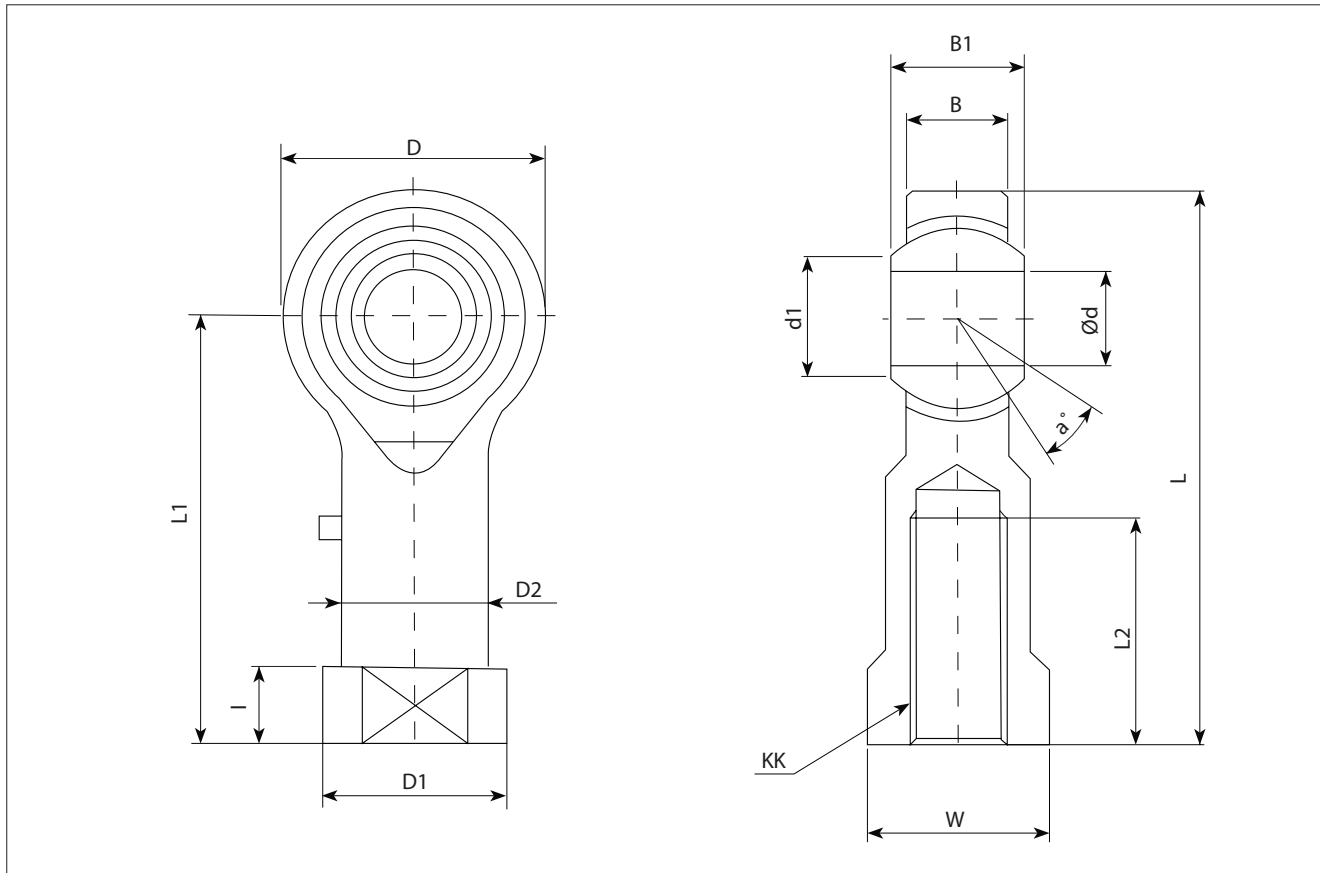
- ※ Interference fit: p6
- ※ Clearance fit: m5
- ※ For maintenance-free spherical plains: n6

Radial Internal Clearance

Unit:mm

Nominal bore mm		Clearance μm					
Above	Below	Stell-Synthetic material		Steel-Steel		Steel-PTFE	
		Max.	Min.	Max.	Min.	Max.	Min.
-	12	28	4	-	-	32	5
12	18	35	5	-	-	40	5
18	25	-	-	100	50	-	-
25	35	-	-	100	50	-	-
35	50	-	-	120	60	-	-

Dimensions



Unit:mm

Model	d	KK	D	B	B1	d1	L (Max.)	l	L1 (Max.)	L2	W	D1	D2	Angular movement (a°)	Ball dia. (mm)	Static load (Co/kgf)	Weight (g)
JF5	5	M5X0.8	17	6	8	7.7	35.5	4	27.1	14	9	11	9	13	11.1	570	16.5
JF6	6	M6X1.0	18.5	6.75	9	9	39.35	5	30.1	14	11	13	10	13	12.7	700	25
JF8	8	M8X1.25	23	9	12	10.4	49.1	6	37.5	17	14	16	12.5	13	15.87	1,000	43
JF10	10	M10X1.25	26.5	10.5	14	12.9	58.6	8	44.6	21	17	19	15	13	19.05	1,350	72
JF12	12	M12X1.75	31	12	16	15.8	67.1	7.5	51.6	24	19	22	17.5	13	22.5	1,700	107
JF14	14	M14X1.5	34	13.5	19	16.9	75.2	9	58.2	27	22	25	20	15	25.4	2,100	160
JF16	16	M16X1.5	38	15	21	19.3	84.7	9.5	65.7	33	24	27	22	15	28.5	2,550	210
JF18	18	M18X1.5	43	16.5	23	21.7	93.2	10	71.7	36	27	31	25	15	31.6	3,000	295
JF20	20	M20X1.5	46	18	25	23.8	101.2	11	78.2	40	30	34	27.5	15	34.5	3,500	380
JF22	22	M22X1.5	52	20	28	25.8	110.2	12	84.2	43	32	37	30	15	38.1	4,200	490
JF24	25	M24X1.5	60	22	31	29.8	124.2	12	94.2	50	36	42	33.5	15	43	7,400	750
JF25		M26X1.5															
JF30	30	M30X1.5	73	21	32	34.4	145.3	16.5	108.8	50	47	49	40	15	47	9,100	900
JF35	35	M36X1.5	82	23	35	39.8	173.3	17	132.3	60	49	58	48	15	53	11,400	1,400

※ JF20~JF35 series with spherical plane can stand heavy load.

※ Body is plated in white color, right thread is standard type.

※ It needs relubrication at regular intervals through grease nipples. The lubrication intervals depend on sliding, velocity, load and environment. They must be fully supplied with grease at the time of mounting. Lithium base grease containing molybdenum is recommended for these types. Desirable is to have a consistency of 2 or 3 in accordance with the NLGI scale.