



One Touch Fitting



EC
[9]-



EL
[9]-



ET
[9]-



EY
[9]-



ELL
[9]-



EST
[9]-



EPFC
[9]-



EFC
[9]-



EH
[9]-



EOC
[9]-



ER
[9]-



ERL
[9]-



EUR
[9]-



EGT
[9]-



EWJ
[9]-



ERY
[9]-



EKG
[9]-



EKJ
[9]-



EKD
[9]-



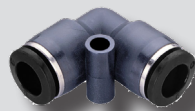
EUT
[9]-



EUY
[9]-



EUC
[9]-



EUL
[9]-



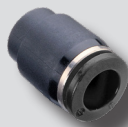
EPC
[9]-



EMP
[9]-



EBC
[9]-



EPF
[9]-



EYA
[9]-



EAL
[9]-



EZA
[9]-

Accessory

One Touch Fitting

Compact One Touch Fitting

Two Touch Fitting

SC

SC-F

SAS

KAS

SCPV

KHVC

KHVF

KHVU

KHVM

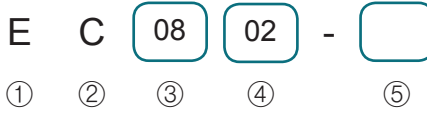
SH

U

N

PFA
PTFE

How to Order



① Series

E	One Touch Fitting
---	-------------------

② Fitting type

C	Male straight
L	Male elbow
T	Male branch tee
Y	Male Union Y
LL	Extended Male elbow
ST	Male run tee
PFC	Bulkhead female straight
FC	Female straight
H	Male Banjo
OC	Round male straight
R	Plug-in reducer
RL	Plug-in elbow
UR	Reducer
GT	Reducer Tee
WJ	Plug-in reducer Y
RY	Union Y
KG	Reducer triple branch union
KJ	Plug-in reducer triple branch
KD	Male reducer triple branch
UT	Union Tee
UY	Reducer Y
UC	Union straight
UL	Union elbow
PC	Bulkhead union
MP	Light bulkhead union
BC	Fitting plug
PF	Tube plug
YA	Plug-in Y
AL	Plug-in elbow
ZA	Union cross

③ Tube outer diameter

03	Ø3
04	Ø4
06	Ø6
08	Ø8
10	Ø10
12	Ø12
16	Ø16

※ For EKD series, connecting tube size is added after tube outer diameter and connecting thread size.

Example) EKD0806-01
One way direction Ø8
Exhaustion side Ø6,
Thread connecting side R(PT)1/8

※ Refer to each model pages respectively for more detail.

④ Connection type & size

Thread	Metric	M5	M5×0.8
		M6	M6×1.0
	R(PT)	01	R(PT)1/8, Rc(PT)1/8
		02	R(PT)1/4, Rc(PT)1/4
03		R(PT)3/8, Rc(PT)3/8	
04		R(PT)1/2, Rc(PT)1/2	
Tube	Metric	Nil	Same Ø as another
		04	Ø4
		06	Ø6
		08	Ø8
		10	Ø10
		12	Ø12
		16	Ø16

⑤ Plating

Nil	Standard
N	Nikel plating

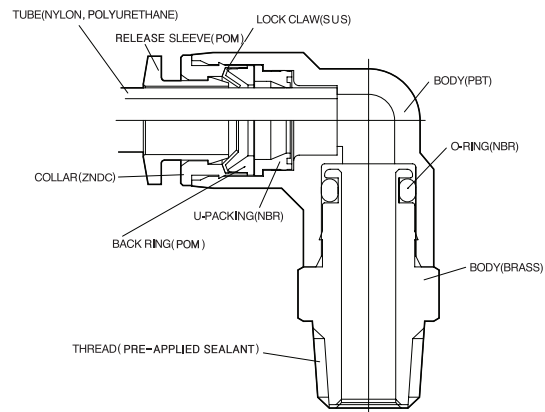
Specifications

Fluid	Air
Working pressure	0~150PSI / 0~9.9kgf/cm ² (0~0.99MPa)
Negative pressure	-29.5 in Hg / -750mmHg(-750Torr)
Working temperature	32~140°F / 0~60°C
Applicable tube type	Polyurethane & Nylon

Features

- One-Touch push-to-connect configuration allows an instant tubing connection.
- Smooth-Edge release sleeve design facilitates a quick tubing disconnection.
- Pre-applied sealant on all external threads eliminates the additional sealing requirement.
- Aesthetically pleasing nickel-plated metallic optional feature ensures anti-contamination properties for an extended product life.
- Internal and/or external flat-to-flat hexagonal configurations for both metric and inch specifications allow a proper tightening or directional orientation upon installation by using L key or allen wrench for the applicable model types.

Structure



Applications

- Tool with one-touch push-to-connect configuration for pneumatic piping connection.
- Applications vary depending on user environment.

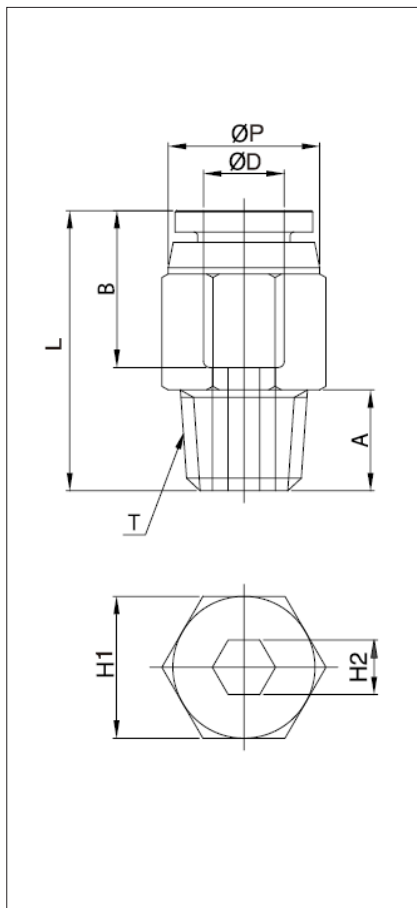
EC series



Male Straight

Dimensions (R(PT) Thread)

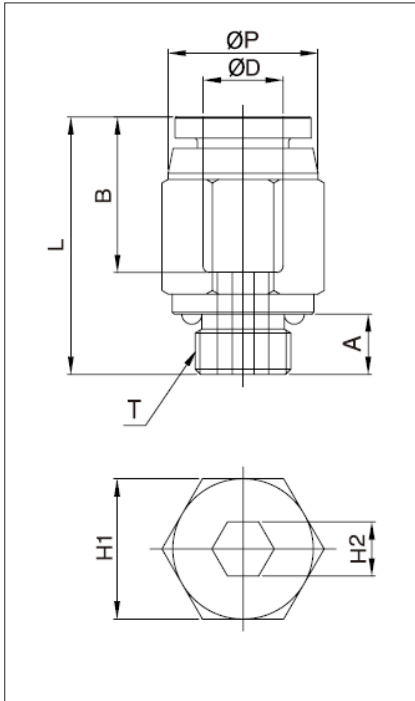
Unit : mm



Model	ØD	ØP	T	L	A	B	H1 (Hex)	H2 (Hex)	ORIFICE	WEIGHT (g)	BOX (EA)
EC04M5	4	10.0	M5X0.8	21.9	4.6	15.9	10	-	2.5	5.8	100
EC04M6			M6X1.0	21.9	4.1		10	-	3.0	5.8	100
EC0401			R(PT) 1/8	21.6	8		10	3	3.0	7.8	100
EC0402			R(PT) 1/4	20.6	10		14	3	3.0	14.8	100
EC0403			R(PT) 3/8	22.0	11		17	3	3.0	26.8	100
EC06M5	6	12.0	M5X0.8	23.6	4.6	16.5	12	-	2.5	8.8	100
EC06M6			M6X1.0	23.1	4.1		12	-	3.0	8.8	100
EC0601			R(PT) 1/8	22.2	8		12	4	4.0	8.8	100
EC0602			R(PT) 1/4	21.0	10		14	5	5.0	12.8	100
EC0603			R(PT) 3/8	22.0	11		17	5	5.0	25.8	100
EC0604			R(PT) 1/2	29.3	14		19	5	5.0	49.8	50
EC0801	8	14.0	R(PT) 1/8	27.5	8	17.7	14	5	5.0	14.7	100
EC0802			R(PT) 1/4	25.5	10		14	6	6.0	18.7	100
EC0803			R(PT) 3/8	23.0	11		17	6	6.0	21.7	100
EC0804			R(PT) 1/2	29.7	14		19	6	6.0	49.7	50
EC1001	10	16.1	R(PT) 1/8	28.7	8	18.6	17	5	5.0	21.5	100
EC1002			R(PT) 1/4	30.7	10		17	6	6.0	24.5	100
EC1003			R(PT) 3/8	24.7	11		17	8	8.0	41.5	100
EC1004			R(PT) 1/2	29.7	14		19	8	8.0	51.5	50
EC1201	12	19.0	R(PT) 1/8	32.3	8	20.9	19	5	5.0	28.3	50
EC1202			R(PT) 1/4	32.8	10		19	6	6.0	36.3	50
EC1203			R(PT) 3/8	29.8	11		19	8	8.0	30.3	50
EC1204			R(PT) 1/2	29.8	14		19	8	8.0	48.3	50
EC1603	16	24.0	R(PT) 3/8	37.3	11	24.8	24	10	10.0	50.0	25
EC1604			R(PT) 1/2	40.3	14		24	10	10.0	63.0	25

Dimensions (G Thread)

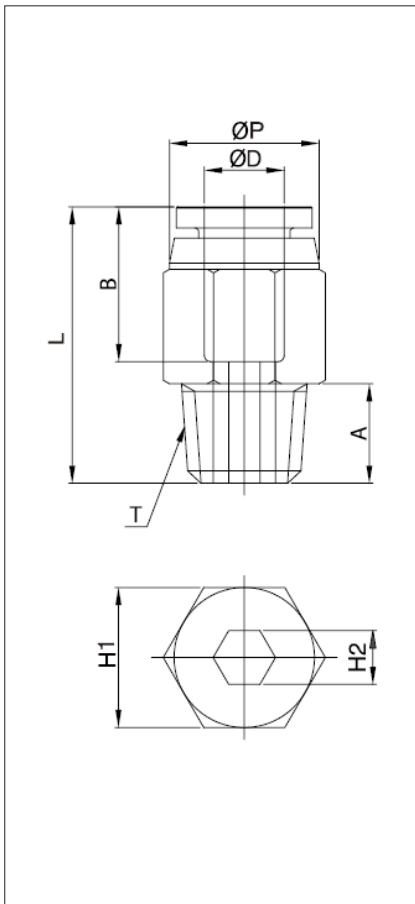
Unit : mm



Model	ØD	ØP	T	L	A	B	H1 (Hex)	H2 (Hex)	ORIFICE	WEIGHT (g)	BOX (EA)
EC04G01	4	10.3	G 1/8	21.5	5.0	15.9	13	3	3.0	10.8	100
EC04G02			G 1/4	23.5	6.5		15	3	3.0	18.8	100
EC04G03			G 3/8	23.5	6.5		17	3	3.0	21.8	100
EC06G01	6	12.3	G 1/8	22.5	5.0	16.5	13	4	4.0	9.8	100
EC06G02			G 1/4	24.5	6.5		15	5	5.0	16.8	100
EC06G03			G 3/8	25.5	6.5		17	5	5.0	23.8	100
EC08G01	8	14.3	G 1/8	26.7	5.0	17.7	15	5	5.0	16.7	100
EC08G02			G 1/4	26.7	6.5		15	6	6.0	14.7	100
EC08G03			G 3/8	25.0	6.5		17	6	6.0	22.7	100
EC08G04			G 1/2	26.0	8.0		21	6	6.0	39.7	50
EC10G01	10	16.5	G 1/8	29.5	5.0	18.6	17	5	5.0	21.5	100
EC10G02			G 1/4	30.0	6.5		17	6	6.0	22.5	100
EC10G03			G 3/8	27.0	6.5		17	8	8.0	21.5	100
EC10G04			G 1/2	28.3	8.0		21	8	8.0	36.5	50
EC12G02	12	19	G 1/4	32.2	6.5	20.9	19	6	6.0	26.3	50
EC12G03			G 3/8	31.6	6.5		19	8	8.0	22.3	50
EC12G04			G 1/2	31.6	8.0		21	8	8.0	36.3	50
EC16G03	16	24.0	G 3/8	36.3	6.5	24.8	24	10	10.0	53.0	25
EC16G04			G 1/2	36.3	8.0		24	10	10.0	59.0	25

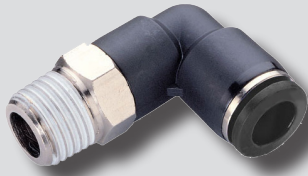
Dimensions (NPT Thread)

Unit : mm



Model	ØD (INCH)	ØP	T	L	A	B	H1 (Hex)	H2 (Hex)	ORIFICE	WEIGHT (g)	BOX (EA)
EC5/32U	5/32	10.5	UNF 10/32	21.4	3.6	16.2	7/16	3/32	2.5	5.8	100
EC5/32N1			NPT 1/8	19.5	8.5		7/16	1/8	3.2	7.8	100
EC5/32N2			NPT 1/4	22.0	10.5		9/16	1/8	3.2	14.8	100
EC5/32N3			NPT 3/8	23.0	11.5		11/16	1/8	3.2	24.8	100
EC3/16U	3/16	11.0	UNF 10/32	22.0	3.6	16.8	7/16	3/32	2.5	7.8	100
EC3/16N1			NPT 1/8	23.1	8.5		7/16	1/8	3.2	14.8	100
EC3/16N2			NPT 1/4	23.1	10.5		9/16	1/8	3.2	24.8	100
EC3/16N3			NPT 3/8	24.1	11.5		11/16	1/8	3.2	24.8	100
EC1/4U	1/4	12.7	UNF 10/32	23.2	3.6	17.3	1/2	3/32	2.5	8.8	100
EC1/4N1			NPT 1/8	23.8	8.5		1/2	3/16	4.0	8.8	100
EC1/4N2			NPT 1/4	23.2	10.5		9/16	3/16	4.0	12.8	100
EC1/4N3			NPT 3/8	24.2	11.5		11/16	3/16	4.0	23.8	100
EC1/4N4	NPT 1/2	27.3	14.5	7/8	3/16	4.0	49.8	50			
EC5/16N1	5/16	14.0	NPT 1/8	28.2	8.5	18.2	9/16	3/16	4.8	12.7	100
EC5/16N2			NPT 1/4	26.0	10.5		9/16	1/4	6.4	14.7	100
EC5/16N3			NPT 3/8	26.5	11.5		11/16	1/4	6.4	21.7	100
EC5/16N4			NPT 1/2	24.5	14.5		7/8	1/4	6.4	59.7	50
EC3/8N1	3/8	16.7	NPT 1/8	30.1	8.5	19.9	11/16	3/16	4.8	21.4	100
EC3/8N2			NPT 1/4	31.1	10.5		11/16	1/4	6.4	25.4	100
EC3/8N3			NPT 3/8	24.8	11.5		11/16	5/16	7.9	20.4	100
EC3/8N4			NPT 1/2	24.0	14.5		7/8	5/16	7.9	50.4	50
EC1/2N1	1/2	20.6	NPT 1/8	33.4	8.5	23.0	7/8	3/16	4.8	32.1	50
EC1/2N2			NPT 1/4	35.4	10.5		7/8	1/4	6.4	35.1	50
EC1/2N3			NPT 3/8	31.9	11.5		7/8	3/8	9.5	36.1	50
EC1/2N4			NPT 1/2	31.4	14.5		7/8	3/8	9.5	46.1	50

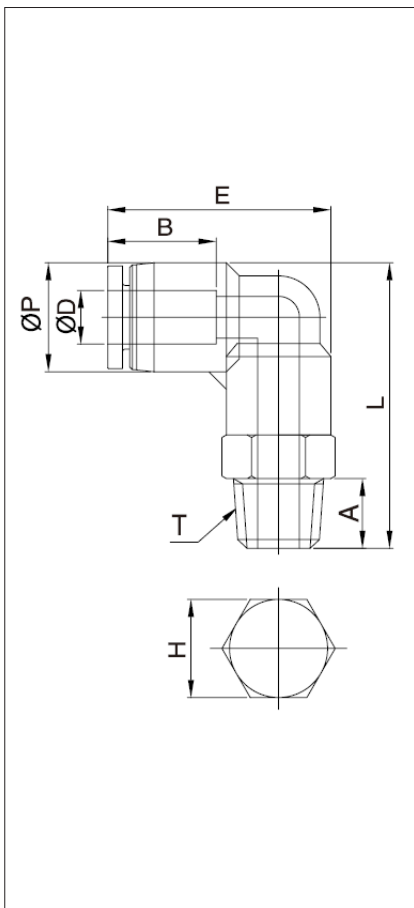
EL series



Male Elbow

Dimensions (R(PT) Thread)

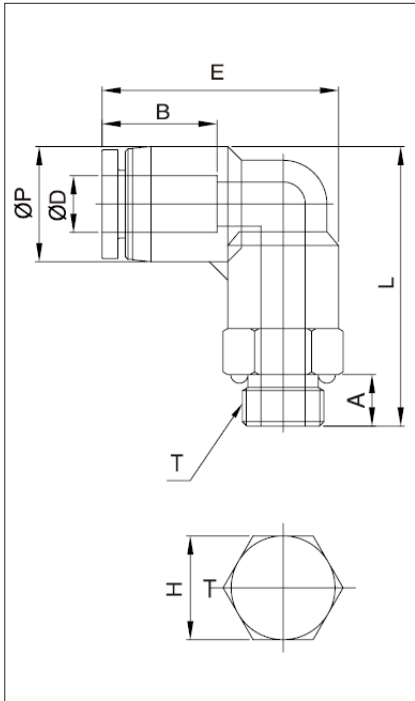
Unit : mm



Model	ØD	ØP	T	L	E	A	B	H (Hex)	ORIFICE	WEIGHT (g)	BOX (EA)
EL04M5	4	10.5	M5X0.8	25.8	23.8	4.1	16.8	10	2.5	7.8	100
EL04M6			M6X1.0	25.8		4.1		10	2.5	7.8	100
EL0401			R(PT) 1/8	29.8		8.0		10	3.0	10.8	100
EL0402			R(PT) 1/4	31.8		10.0		14	3.0	17.8	100
EL0403			R(PT) 3/8	32.8		11.0		17	3.0	31.8	100
EL06M5			6	12.5		M5X0.8		30.3	26.5	4.6	17.6
EL06M6	M6X1.0	28.9			4.1	12	3.0	5.7		100	
EL0601	R(PT) 1/8	32.8			8.0	12	4.5	14.7		100	
EL0602	R(PT) 1/4	35.8			10.0	14	4.5	19.7		100	
EL0603	R(PT) 3/8	36.8			11.0	17	4.5	26.7		50	
EL0604	R(PT) 1/2	39.8			14.0	21	4.5	46.7		50	
EL0801	8	14.8	R(PT) 1/8	35.2	29.7	8.0	18.7	14	6.0	17.7	50
EL0802			R(PT) 1/4	38.2		10.0		14	6.0	22.7	50
EL0803			R(PT) 3/8	39.2		11.0		17	6.0	29.7	50
EL0804			R(PT) 1/2	42.2		14.0		21	6.5	49.7	50
EL1001	10	17.5	R(PT) 1/8	37.3	32.1	8.0	19.6	17	6.0	24.2	50
EL1002			R(PT) 1/4	40.3		10.0		17	7.0	30.2	50
EL1003			R(PT) 3/8	41.3		11.0		17	7.0	33.2	50
EL1004			R(PT) 1/2	44.3		14.0		21	7.0	53.2	25
EL1201	12	20.5	R(PT) 1/8	42.7	36.9	8.0	21.9	19	6.0	39.1	25
EL1202			R(PT) 1/4	44.7		10.0		19	7.0	42.1	25
EL1203			R(PT) 3/8	45.7		11.0		19	10.0	41.1	25
EL1204			R(PT) 1/2	48.7		14.0		21	10.0	53.1	25
EL1603	16	25.5	R(PT) 3/8	55.6	44.1	11.0	24.0	24	10.0	67.0	20
EL1604			R(PT) 1/2	58.3		14.0		24	13.0	76.0	20

Dimensions (G Thread)

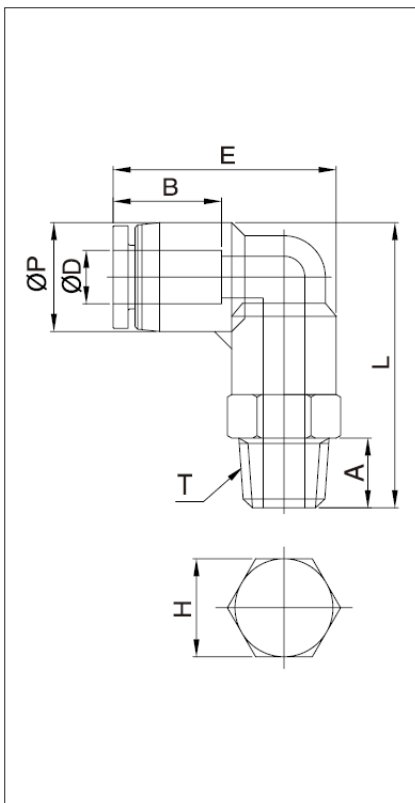
Unit : mm



Model	ØD	ØP	T	L	E	A	B	H (Hex)	ORIFICE	WEIGHT (g)	BOX (EA)
EL04G01	4	10.5	G 1/8	27.4	23.8	5.0	16.8	14	3.0	12.8	100
EL04G02			G 1/4	29.4		6.5		17	3.0	15.8	100
EL04G03			G 3/8	30.4		6.5		20	3.0	21.8	100
EL06G01	6	12.5	G 1/8	30.6	26.5	5.0	17.6	14	4.0	13.7	100
EL06G02			G 1/4	32.6		6.5		17	4.0	19.7	100
EL06G03			G 3/8	33.6		6.5		20	4.0	23.7	50
EL08G01	8	14.5	G 1/8	32.9	29.7	5.0	18.7	14	6.0	14.7	50
EL08G02			G 1/4	34.9		6.5		17	6.0	21.7	50
EL08G03			G 3/8	35.9		6.5		20	6.0	26.7	50
EL08G04			G 1/2	36.9		8.0		24	6.0	36.7	50
EL10G01	10	17.5	G 1/8	35.4	32.1	5.0	19.6	17	7.0	23.2	50
EL10G02			G 1/4	37.4		6.5		17	7.0	22.2	50
EL10G03			G 3/8	38.4		6.5		20	7.0	29.2	50
EL10G04			G 1/2	39.4		8.0		24	7.0	41.2	25
EL12G02	12	20.5	G 1/4	41.4	36.9	6.5	21.9	19	8.0	33.1	25
EL12G03			G 3/8	42.4		6.5		20	10.0	34.1	25
EL12G04			G 1/2	43.4		8.0		24	10.0	47.1	25
EL16G03	16	25.5	G 3/8	53.5	44.1	6.5	24.0	24	10.0	64.0	20
EL16G04			G 1/2	54.5		8.0		24	13.0	69.0	20

Dimensions (NPT Thread)

Unit : mm



Model	ØD	ØP	T	L	E	A	B	H (Hex)	ORIFICE	WEIGHT (g)	BOX (EA)
EL5/32U	5/32	10.5	UNF 10/32	26.7	23.7	3.6	16.2	7/16	2.5	7.8	100
EL5/32N1			NPT 1/8	30.3		8.5		7/16	3.0	9.8	100
EL5/32N2			NPT 1/4	33.3		10.5		9/16	3.0	16.8	100
EL3/16U	3/16	11.5	UNF 10/32	27.2	24.2	3.6	16.8	7/16	3.0	7.7	100
EL3/16N1			NPT 1/8	30.8		8.5		7/16	3.0	9.7	100
EL3/16N2			NPT 1/4	33.8		10.5		9/16	3.0	16.7	100
EL3/16N3			NPT 3/8	34.8		11.5		11/16	3.0	18.7	50
EL1/4U	1/4	13.0	UNF 10/32	32.4	26.5	3.6	17.3	1/2	2.5	11.7	100
EL1/4N1			NPT 1/8	34.3		8.5		1/2	4.5	14.7	100
EL1/4N2			NPT 1/4	37.0		10.5		9/16	4.5	19.7	100
EL1/4N3			NPT 3/8	38.0		11.5		11/16	4.5	32.7	50
EL5/16N1	5/16	14.5	NPT 1/8	36.7	30.1	8.5	18.2	9/16	6.0	17.7	100
EL5/16N2			NPT 1/4	38.7		10.5		9/16	6.0	22.7	50
EL5/16N3			NPT 3/8	39.7		11.5		11/16	6.0	35.7	50
EL5/16N4			NPT 1/2	42.7		14.5		7/8	6.0	55.7	25
EL3/8N1	3/8	17.5	NPT 1/8	38.8	32.3	8.5	19.9	11/16	5.0	24.2	50
EL3/8N2			NPT 1/4	40.8		10.5		11/16	7.0	28.2	50
EL3/8N3			NPT 3/8	41.8		11.5		11/16	7.0	33.2	50
EL3/8N4			NPT 1/2	44.8		14.5		7/8	7.0	53.2	25
EL1/2N2	1/2	21.0	NPT 1/4	46.0	37.8	10.5	23.0	3/4	8.0	36.0	25
EL1/2N3			NPT 3/8	47.0		11.5		3/4	9.0	45.0	25
EL1/2N4			NPT 1/2	50.0		14.5		7/8	9.0	63.0	25

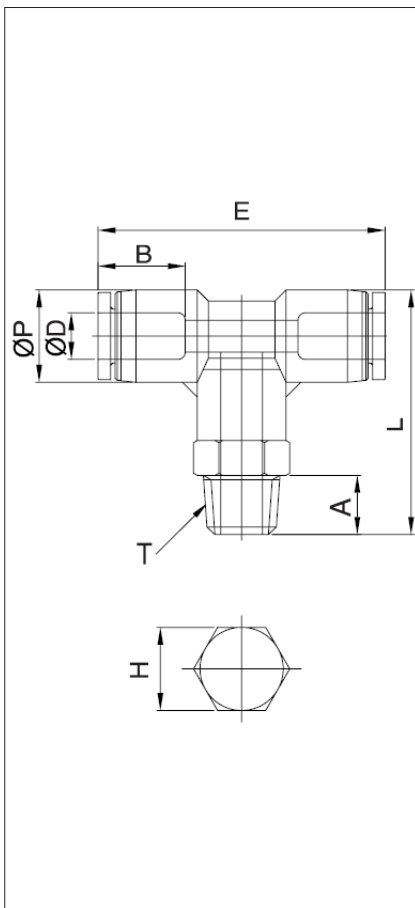
ET series



Male Branch Tee

Dimensions (R(PT) Thread)

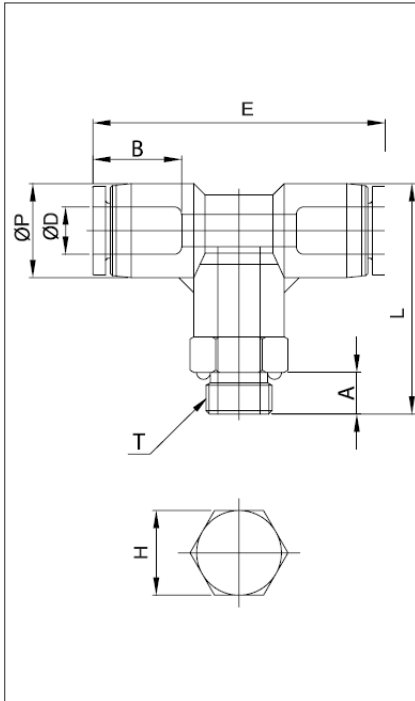
Unit : mm



Model	ØD	ØP	T	L	E	A	B	H (Hex)	Orifice	Weight (g)	Box (EA)
ET04M5	4	10.5	M5X0.8	20.5	37.3	4.6	16.8	10	2.0	9.6	100
ET04M6			M6X1.0	20.6		4.1		10	2.5	9.6	100
ET0401			R(PT) 1/8	24.5		8.0		10	3.0	10.6	100
ET0402			R(PT) 1/4	26.5		10.0		14	3.0	17.6	100
ET0403			R(PT) 3/8	27.5		11.0		17	3.0	25.6	50
ET06M5	6	12.5	M5X0.8	24.0	40.7	4.6	17.6	12	2.0	14.4	50
ET06M6			M6X1.0	22.6		4.1		12	3.0	14.4	50
ET0601			R(PT) 1/8	26.5		8.0		12	4.5	16.4	50
ET0602			R(PT) 1/4	29.5		10.0		14	4.5	22.4	50
ET0603			R(PT) 3/8	30.5		11.0		17	4.5	31.4	50
ET0604			R(PT) 1/2	33.5		14.0		21	4.5	48.4	25
ET0801	8	14.8	R(PT) 1/8	28.0	45.1	8.0	18.7	14	6.0	20.4	50
ET0802			R(PT) 1/4	31.0		10.0		14	6.0	24.4	50
ET0803			R(PT) 3/8	32.0		11.0		17	6.0	32.4	50
ET0804			R(PT) 1/2	35.0		14.0		21	6.5	50.4	25
ET1001	10	17.5	R(PT) 1/8	28.5	47.4	8.0	19.6	17	6.0	30.4	25
ET1002			R(PT) 1/4	31.5		10.0		17	7.0	35.4	25
ET1003			R(PT) 3/8	32.5		11.0		17	7.0	39.4	25
ET1004			R(PT) 1/2	35.5		14.0		21	7.0	58.4	25
ET1201	12	20.5	R(PT) 1/8	32.4	55.3	8.0	21.9	19	6.0	45.8	25
ET1202			R(PT) 1/4	34.4		10.0		19	7.0	47.8	25
ET1203			R(PT) 3/8	35.4		11.0		19	10.0	53.8	25
ET1204			R(PT) 1/2	38.4		14.0		21	10.0	59.8	20
ET1603	16	25.5	R(PT) 3/8	42.8	64.6	11.0	24.0	24	10.0	84.0	12
ET1604			R(PT) 1/2	45.8		14.0		24	13.0	91.0	12

Dimensions (G Thread)

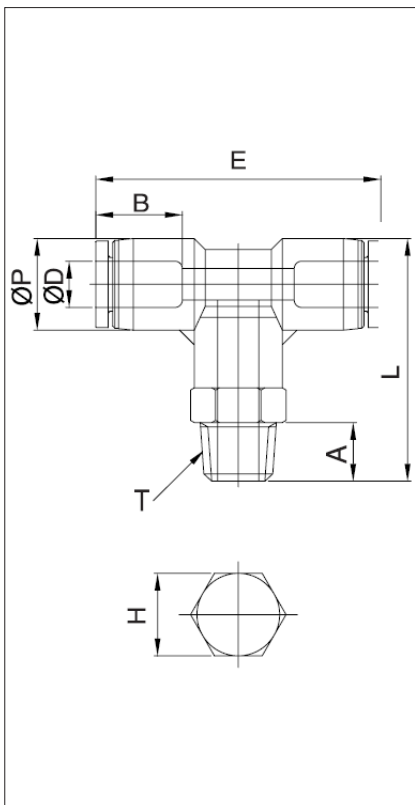
Unit : mm



Model	ØD	ØP	T	L	E	A	B	H (Hex)	Orifice	Weight (g)	Box (EA)
ET04G01	4	10.5	G 1/8	27.8	37.6	5.0	16.8	14	3.0	13.6	100
ET04G02			G 1/4	29.8		6.5		17	3.0	18.6	100
ET04G03			G 3/8	29.3		6.5		20	3.0	23.6	50
ET06G01	6	12.5	G 1/8	30.8	41.0	5.0	17.6	14	4.0	16.4	50
ET06G02			G 1/4	32.8		6.5		17	4.0	21.4	50
ET06G03			G 3/8	32.8		6.5		20	4.0	26.4	50
ET08G01	8	14.5	G 1/8	33.3	44.4	5.0	18.7	14	6.0	18.4	50
ET08G02			G 1/4	35.3		6.5		17	6.0	25.4	50
ET08G03			G 3/8	35.3		6.5		20	6.0	29.4	50
ET08G04			G 1/2	36.3		8.0		24	6.0	40.4	25
ET10G01	10	17.5	G 1/8	35.3	47.2	5.0	19.6	17	7.0	28.4	25
ET10G02			G 1/4	37.3		6.5		17	7.0	27.4	25
ET10G03			G 3/8	37.3		6.5		20	7.0	33.4	25
ET10G04			G 1/2	38.3		8.0		24	7.0	45.4	25
ET12G02	12	20.5	G 1/4	42.7	54.8	6.5	21.9	19	8.0	40.2	25
ET12G03			G 3/8	42.7		6.5		20	10.0	42.2	25
ET12G04			G 1/2	43.7		8.0		24	10.0	53.2	20
ET16G03	16	25.5	G 3/8	53.6	64.6	6.5	24.0	24	10.0	80.0	12
ET16G04			G 1/2	54.6		8.0		24	13.0	84.0	12

Dimensions (NPT Thread)

Unit : mm



Model	ØD (INCH)	ØP	T	L	E	A	B	H (Hex)	Orifice	Weight (g)	Box (EA)
ET5/32U	5/32	10.5	UNF 10/32	26.7	37.0	3.6	16.2	7/16	2.5	9.6	100
ET5/32N1			NPT 1/8	30.3		8.5		7/16	3.0	11.6	100
ET5/32N2			NPT 1/4	33.3		10.5		9/16	3.0	15.6	100
ET3/16U	3/16	11.5	UNF 10/32	27.2	38.2	3.6	16.8	7/16	3.0	9.4	50
ET3/16N1			NPT 1/8	30.8		8.5		7/16	3.0	11.4	50
ET3/16N2			NPT 1/4	33.8		10.5		9/16	3.0	15.4	50
ET3/16N3			NPT 3/8	34.8		11.5		11/16	3.0	19.4	50
ET1/4U	1/4	13.0	UNF 10/32	32.4	40.8	3.6	17.3	1/2	2.5	14.4	50
ET1/4N1			NPT 1/8	34.3		8.5		1/2	4.5	16.4	50
ET1/4N2			NPT 1/4	37.0		10.5		9/16	4.5	22.4	50
ET1/4N3			NPT 3/8	38.0		11.5		11/16	4.5	42.4	50
ET5/16N1	5/16	14.5	NPT 1/8	36.7	43.7	8.5	18.2	9/16	6.0	22.4	50
ET5/16N2			NPT 1/4	38.7		10.5		9/16	6.0	26.4	50
ET5/16N3			NPT 3/8	39.7		11.5		11/16	6.0	30.4	25
ET5/16N4			NPT 1/2	42.7		14.5		7/8	6.0	50.4	25
ET3/8N1	3/8	17.5	NPT 1/8	38.8	47.7	8.5	19.9	11/16	5.0	34.4	25
ET3/8N2			NPT 1/4	40.8		10.5		11/16	7.0	38.4	25
ET3/8N3			NPT 3/8	41.8		11.5		11/16	7.0	43.4	25
ET3/8N4			NPT 1/2	44.8		14.5		7/8	7.0	58.4	25
ET1/2N2	1/2	21.0	NPT 1/4	46.0	56.5	10.5	23.0	3/4	8.0	45.0	25
ET1/2N3			NPT 3/8	47.0		11.5		3/4	9.0	54.0	25
ET1/2N4			NPT 1/2	50.0		14.5		7/8	9.0	74.0	20

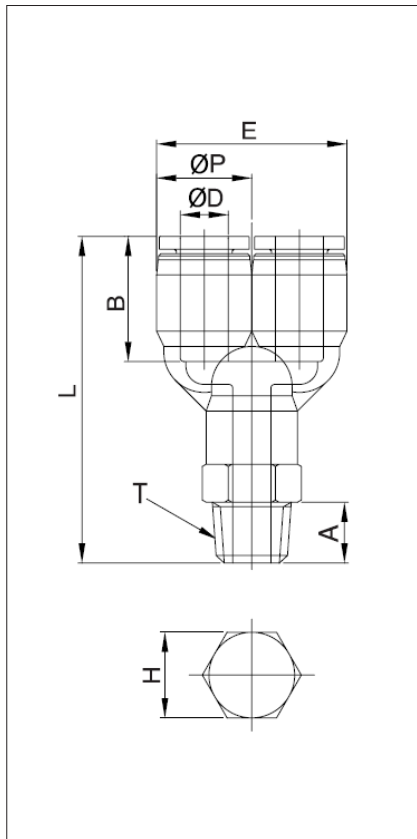
EY series



Male Union Y

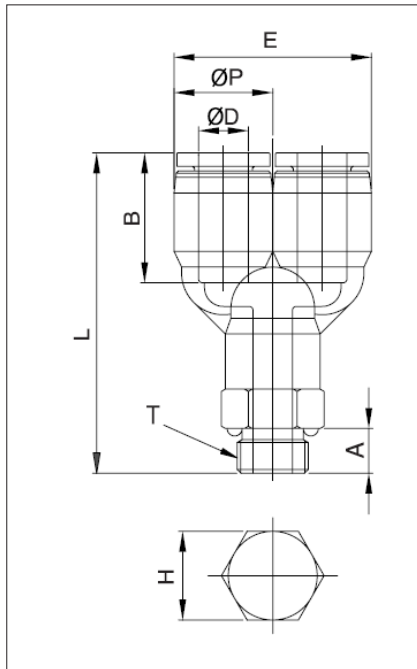
Dimensions (R(PT) Thread)

Unit : mm



Model	ØD	ØP	T	L	E	A	B	H (Hex)	ORIFICE	WEIGHT (g)	BOX (EA)
EY04M5	4	10.5	M5X0.8	41.1	21.0	4.6	15.7	10	2.5	10.6	100
EY04M6			M6X1.0	41.1		4.1		10	2.5	10.6	100
EY0401			R(PT) 1/8	43.6		8.0		10	3.0	11.6	100
EY0402			R(PT) 1/4	45.6		10.0		14	3.0	17.6	100
EY0403			R(PT) 3/8	46.6		11.0	17	3.0	25.6	50	
EY06M5	6	12.5	M5X0.8	42.0	25.0	4.6	17.0	12	2.5	15.4	50
EY06M6			M6X1.0	40.6		4.1		12	3.0	15.4	50
EY0601			R(PT) 1/8	44.5		8.0		12	4.5	18.4	50
EY0602			R(PT) 1/4	47.5		10.0		14	4.5	19.4	50
EY0603			R(PT) 3/8	48.5		11.0		17	4.5	31.4	50
EY0604			R(PT) 1/2	51.5		14.0		21	4.5	45.4	25
EY0801	8	14.8	R(PT) 1/8	47.9	29.0	8.0	19.1	14	6.0	19.4	50
EY0802			R(PT) 1/4	50.9		10.0		14	6.0	25.4	50
EY0803			R(PT) 3/8	51.9		11.0		17	6.0	33.4	50
EY0804			R(PT) 1/2	54.9		14.0		21	6.5	51.4	25
EY1001	10	17.5	R(PT) 1/8	51.2	35.2	8.0	20.2	17	6.0	31.4	25
EY1002			R(PT) 1/4	54.2		10.0		17	7.0	36.4	25
EY1003			R(PT) 3/8	55.2		11.0		17	7.0	38.4	25
EY1004			R(PT) 1/2	58.2		14.0		21	7.0	58.4	25
EY1201	12	20.5	R(PT) 1/8	57.2	42.0	8.0	22.7	19	6.0	48.2	25
EY1202			R(PT) 1/4	59.2		10.0		19	7.0	51.2	25
EY1203			R(PT) 3/8	60.2		11.0		19	10.0	50.2	25
EY1204			R(PT) 1/2	63.2		14.0		21	10.0	62.2	25

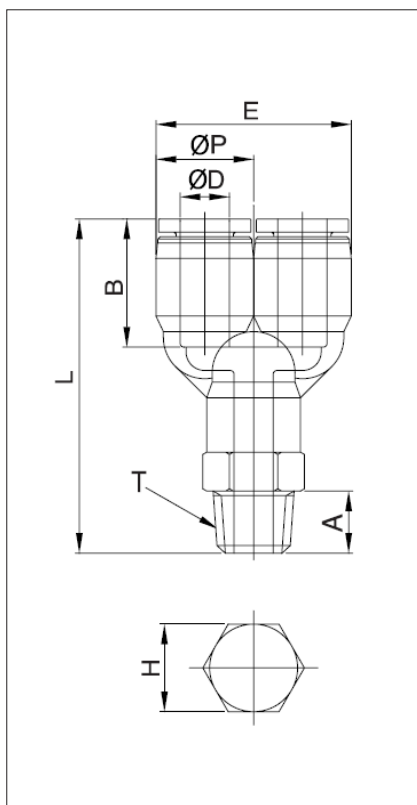
Dimensions (G Thread)



Unit : mm

Model	ØD	ØP	T	L	E	A	B	H (Hex)	ORIFICE	WEIGHT (g)	BOX (EA)
EY04G01	4	10.5	G 1/8	41.6	21.0	5.0	15.7	14	3.0	14.6	100
EY04G02			G 1/4	43.6		6.5		17	3.0	18.6	100
EY04G03			G 3/8	43.6		6.5		20	3.0	22.6	50
EY06G01	6	12.5	G 1/8	42.5	25.0	5.0	17.0	14	4.0	17.4	50
EY06G02			G 1/4	44.5		6.5		17	4.0	22.4	50
EY06G03			G 3/8	44.5		6.5		20	4.0	26.4	50
EY06G04			G 1/2	45.5		8.0		24	4.0	37.4	25
EY08G01	8	14.5	G 1/8	45.9	29.0	5.0	19.0	14	6.0	18.4	50
EY08G02			G 1/4	47.9		6.5		17	6.0	25.4	50
EY08G03			G 3/8	47.9		6.5		20	6.0	30.4	50
EY08G04			G 1/2	48.9		8.0		24	6.0	40.4	25
EY10G01	10	17.5	G 1/8	49.2	35.2	5.0	20.2	17	6.0	29.4	25
EY10G02			G 1/4	51.2		6.5		17	7.0	28.4	25
EY10G03			G 3/8	51.2		6.5		20	7.0	35.4	25
EY10G04			G 1/2	52.2		8.0		24	7.0	47.4	25
EY12G02	12	20.5	G 1/4	56.2	42.0	6.5	22.7	19	8.0	44.2	25
EY12G03			G 3/8	56.2		6.5		20	9.0	45.2	25
EY12G04			G 1/2	57.2		8.0		24	9.0	58.2	25

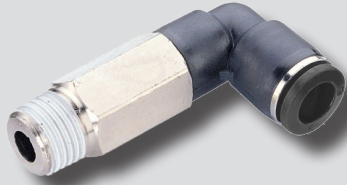
Dimensions (NPT Thread)



Unit : mm

Model	ØD (INCH)	ØP	T	L	E	A	B	H (Hex)	ORIFICE	WEIGHT (g)	BOX (EA)
EY5/32U	5/32	10.5	UNF 10/32	38.1	21.0	3.6	16.2	7/16	2.5	10.6	100
EY5/32N1			NPT 1/8	41.7		8.5		7/16	3.0	11.6	100
EY5/32N2			NPT 1/4	44.7		10.5		9/16	3.0	17.6	50
EY3/16U	3/16	11.5	UNF 10/32	41.8	23.0	3.6	16.8	7/16	3.0	10.4	50
EY3/16N1			NPT 1/8	45.4		8.5		7/16	3.0	11.4	50
EY3/16N2			NPT 1/4	48.4		10.5		9/16	3.0	17.4	50
EY3/16N3			NPT 3/8	49.4		11.5		11/16	3.0	19.4	50
EY1/4U	1/4	13.0	UNF 10/32	45.8	26.0	3.6	17.3	1/2	2.5	15.4	50
EY1/4N1			NPT 1/8	47.7		8.5		1/2	4.5	18.4	50
EY1/4N2			NPT 1/4	50.4		10.5		9/16	4.5	19.4	50
EY1/4N3			NPT 3/8	51.4		11.5		11/16	4.5	31.4	50
EY5/16N1	5/16	14.5	NPT 1/8	47.0	29.0	8.5	18.2	9/16	6.0	19.4	50
EY5/16N2			NPT 1/4	49.0		10.5		9/16	6.0	28.4	50
EY5/16N3			NPT 3/8	50.0		11.5		11/16	6.0	29.4	50
EY5/16N4			NPT 1/2	53.0		14.5		7/8	6.0	49.4	25
EY3/8N1	3/8	17.5	NPT 1/8	52.7	35.0	8.5	19.9	11/16	5.0	28.4	25
EY3/8N2			NPT 1/4	54.7		10.5		11/16	7.0	36.4	25
EY3/8N3			NPT 3/8	55.7		11.5		11/16	7.0	38.4	25
EY3/8N4			NPT 1/2	58.7		14.5		7/8	7.0	58.4	25
EY1/2N2	1/2	21.0	NPT 1/4	64.6	42.0	10.5	23.0	3/4	7.0	58.0	25
EY1/2N3			NPT 3/8	65.6		11.5		3/4	7.0	68.0	25
EY1/2N4			NPT 1/2	68.6		14.5		7/8	7.0	78.0	20

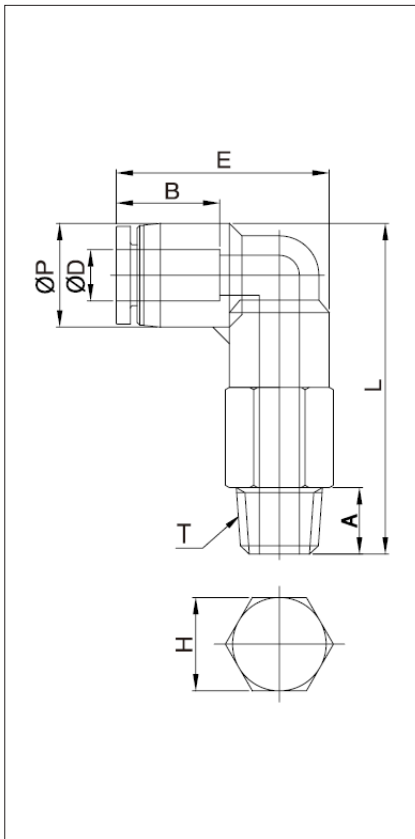
ELL series



Extended Male Elbow

Dimensions (R(PT) Thread)

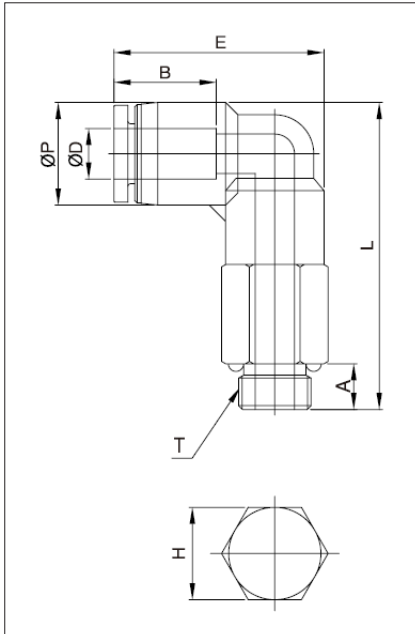
Unit : mm



Model	ØD	ØP	T	L	E	A	B	H (Hex)	Orifice	Weight (g)	Box (EA)
ELL04M5	4	10.5	M5X0.8	38.8	23.8	4.6	16.8	10	2.0	15.8	50
ELL04M6			M6X1.0	38.5		4.3		10	3.0	15.8	50
ELL0401			R(PT) 1/8	40.8		8.0		10	3.0	15.8	50
ELL0402			R(PT) 1/4	42.8		10.0		14	3.0	26.8	50
ELL0403	R(PT) 3/8	43.8	11.0	17	3.0	40.8	50				
ELL06M5	6	12.5	M5X0.8	44.3	26.5	4.6	17.6	12	2.0	27.7	50
ELL06M6			M6X1.0	44.0		4.3		12	3.0	27.7	50
ELL0601			R(PT) 1/8	46.3		8.0		12	4.0	27.7	50
ELL0602			R(PT) 1/4	48.3		10.0		14	4.0	34.7	50
ELL0603			R(PT) 3/8	49.3		11.0		17	4.5	45.7	50
ELL0604			R(PT) 1/2	52.3		14.0		21	4.0	69.7	25
ELL0801	8	14.8	R(PT) 1/8	51.2	29.7	8.0	18.7	14	6.0	35.7	50
ELL0802			R(PT) 1/4	53.2		10.0		14	6.0	39.7	50
ELL0803			R(PT) 3/8	54.2		11.0		17	6.0	55.7	25
ELL0804			R(PT) 1/2	57.2		14.0		22	6.0	99.7	25
ELL1001	10	17.5	R(PT) 1/8	48.5	32.1	8.0	19.6	17	6.0	60.2	25
ELL1002			R(PT) 1/4	50.5		10.0		17	7.0	64.2	25
ELL1003			R(PT) 3/8	51.5		11.0		17	7.0	63.2	25
ELL1004			R(PT) 1/2	54.5		14.0		22	7.0	99.2	25
ELL1201	12	20.5	R(PT) 1/8	64.2	36.9	8.0	21.9	19	8.0	89.1	25
ELL1202			R(PT) 1/4	66.2		10.0		19	8.0	89.1	25
ELL1203			R(PT) 3/8	67.2		11.0		19	10.0	89.1	25
ELL1204			R(PT) 1/2	70.2		14.0		22	10.0	106.1	25

Dimensions (G Thread)

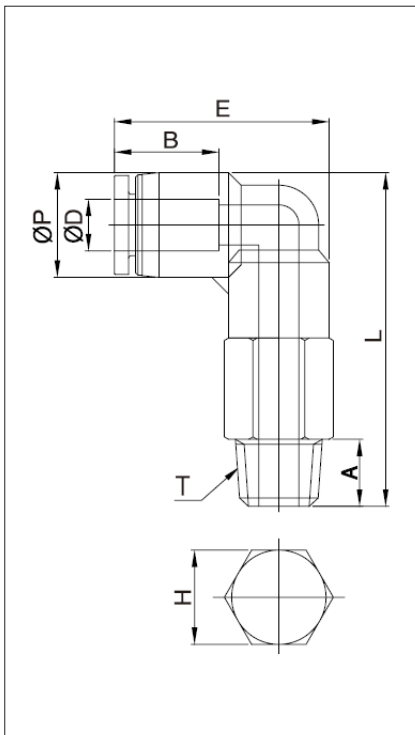
Unit : mm



Model	ØD	ØP	T	L	E	A	B	H (Hex)	Orifice	Weight (g)	Box (EA)
ELL04G01	4	10.5	G 1/8	39.4	23.8	5.0	16.8	14	2.0	26.8	50
ELL04G02			G 1/4	41.4		6.5		17	2.0	38.8	50
ELL04G03			G 3/8	42.9		6.5		20	2.0	53.8	50
ELL06G01	6	12.5	G 1/8	45.6	26.5	5.0	17.6	14	4.0	30.7	50
ELL06G02			G 1/4	47.6		6.5		17	4.0	41.7	50
ELL06G03			G 3/8	48.6		6.5		20	4.0	55.7	50
ELL08G01	8	14.5	G 1/8	50.9	29.7	5.0	18.7	14	6.0	33.7	50
ELL08G02			G 1/4	52.9		6.5		17	6.0	50.7	50
ELL08G03			G 3/8	53.9		6.5		20	6.0	61.7	25
ELL08G04			G 1/2	54.9		8.0		24	6.0	101.7	25
ELL10G01	10	17.5	G 1/8	55.4	32.1	5.0	19.6	17	6.0	58.2	25
ELL10G02			G 1/4	57.4		6.5		17	8.0	55.2	25
ELL10G03			G 3/8	58.4		6.5		20	8.0	72.2	25
ELL10G04			G 1/2	59.4		8.0		24	8.0	102.2	25
ELL12G02	12	20.5	G 1/4	66.4	36.9	6.5	21.9	19	8.0	82.1	25
ELL12G03			G 3/8	67.4		6.5		20	10.0	84.1	25
ELL12G04			G 1/2	68.4		8.0		24	10.0	118.1	25

Dimensions (NPT Thread)

Unit : mm



Model	ØD (INCH)	ØP	T	L	E	A	B	H (Hex)	Orifice	Weight (g)	Box (EA)
ELL5/32U	5/32	10.5	UNF 10/32	32.5	18.6	3.6	16.2	7/16	2.0	15.8	100
ELL5/32N1			NPT 1/8	35.5		8.5		7/16	3.0	17.8	100
ELL5/32N2			NPT 1/4	38.5		10.5		9/16	3.0	31.8	50
ELL3/16U	3/16	11.5	UNF 10/32	32.5	19.1	3.6	16.8	7/16	2.0	15.7	50
ELL3/16N1			NPT 1/8	35.5		8.5		7/16	3.0	17.7	50
ELL3/16N2			NPT 1/4	38.5		10.5		9/16	3.0	31.7	50
ELL3/16N3			NPT 3/8	38.5		11.5		11/16	3.0	39.7	50
ELL1/4U	1/4	13.0	UNF 10/32	37.5	20.4	3.6	17.3	1/2	2.0	27.7	50
ELL1/4N1			NPT 1/8	41.3		8.5		1/2	4.5	28.7	50
ELL1/4N2			NPT 1/4	44.0		10.5		9/16	4.5	34.7	50
ELL1/4N3			NPT 3/8	45.0		11.5		11/16	4.5	49.7	50
ELL5/16N1	5/16	14.5	NPT 1/8	44.4	22.3	8.5	18.2	9/16	6.0	35.7	50
ELL5/16N2			NPT 1/4	46.4		10.5		9/16	6.0	39.7	50
ELL5/16N3			NPT 3/8	50.4		11.5		11/16	6.0	59.7	25
ELL3/8N2	3/8	17.5	NPT 1/4	50.0	23.9	10.5	19.9	11/16	7.0	64.2	25
ELL3/8N3			NPT 3/8	51.0		11.5		11/16	7.0	69.2	25
ELL3/8N4			NPT 1/2	54.0		14.5		7/8	7.0	99.2	20
ELL1/2N2	1/2	21.0	NPT 1/4	57.5	28.5	10.5	23.0	3/4	8.0	89.0	20
ELL1/2N3			NPT 3/8	58.5		11.5		3/4	9.0	119.0	20
ELL1/2N4			NPT 1/2	61.5		14.5		7/8	9.0	159.0	20

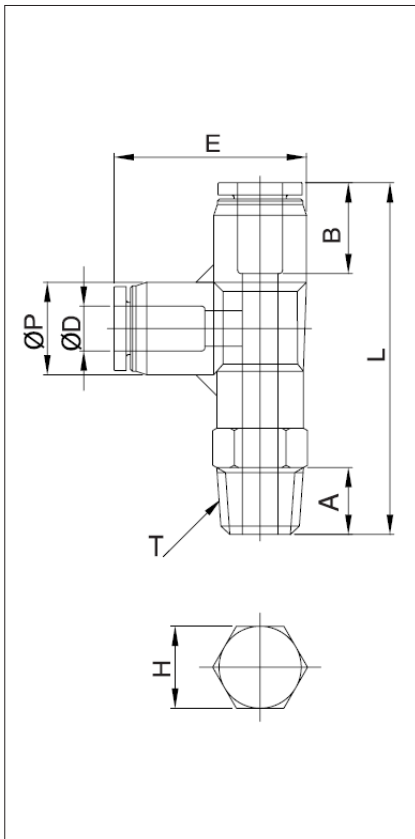
EST series



Male Run Tee

Dimensions (R(PT) Thread)

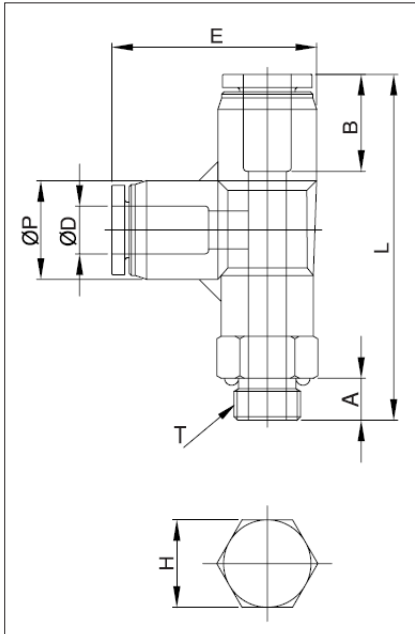
Unit : mm



Model	ØD	ØP	T	L	E	A	B	H (Hex)	ORIFICE	WEIGHT (g)	BOX (EA)
EST04M5	4	10.5	M5X0.8	42.3	25.1	4.6	16.8	10	2.0	10.6	100
EST04M6			M6X1.0	41.3		4.1		10	2.5	10.6	100
EST0401			R(PT) 1/8	45.3		8.0		10	3.0	11.6	100
EST0402			R(PT) 1/4	48.3		10.0		14	3.0	17.6	100
EST0403			R(PT) 3/8	48.3		11.0		17	3.0	26.6	50
EST06M5			6	12.5		M5X0.8		46.1	28.1	4.6	17.6
EST06M6	M6X1.0	44.6			4.1	12	3.0	15.4		50	
EST0601	R(PT) 1/8	48.6			8.0	12	4.5	17.4		50	
EST0602	R(PT) 1/4	51.2			10.0	14	4.5	25.4		50	
EST0603	R(PT) 3/8	52.2			11.0	17	4.5	29.4		50	
EST0604	R(PT) 1/2	55.5			14.0	21	4.5	32.4		25	
EST0801	8	14.8	R(PT) 1/8	52.2	30.9	8.0	18.7	14	6.0	22.4	50
EST0802			R(PT) 1/4	55.2		10.0		14	6.0	27.4	50
EST0803			R(PT) 3/8	56.2		11.0		17	6.0	34.4	50
EST0804			R(PT) 1/2	59.2		14.0		21	6.5	53.4	25
EST1001	10	17.5	R(PT) 1/8	55.6	34.6	8.0	19.6	17	6.0	28.4	25
EST1002			R(PT) 1/4	58.6		10.0		17	7.0	34.4	25
EST1003			R(PT) 3/8	59.6		11.0		17	7.0	38.4	25
EST1004			R(PT) 1/2	62.6		14.0		21	7.0	58.4	25
EST1201	12	20.5	R(PT) 1/8	62.8	40.3	8.0	21.9	19	6.0	47.8	25
EST1202			R(PT) 1/4	64.8		10.0		19	7.0	50.8	25
EST1203			R(PT) 3/8	65.8		11.0		19	10.0	53.8	25
EST1204			R(PT) 1/2	68.8		14.0		21	10.0	61.8	20

Dimensions (G Thread)

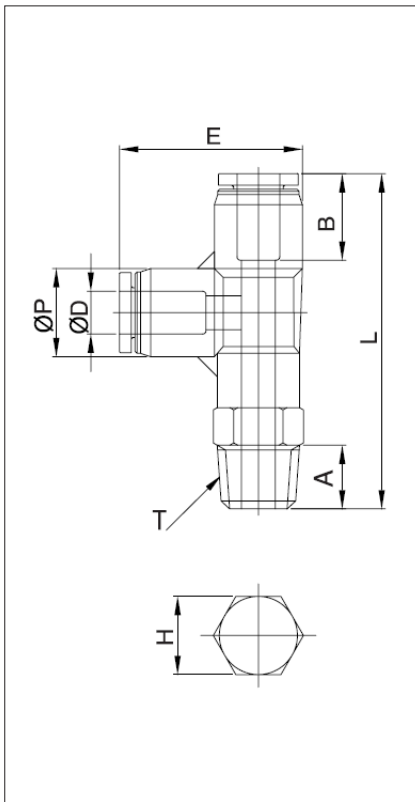
Unit : mm



Model	ØD	ØP	T	L	E	A	B	H (Hex)	ORIFICE	WEIGHT (g)	BOX (EA)
EST04G01	4	10.5	G 1/8	42.8	25.1	5.0	16.8	14	3.0	14.6	100
EST04G02			G 1/4	44.8		6.5		17		18.6	100
EST04G03			G 3/8	44.3		6.5		20		23.6	50
EST06G01	6	12.5	G 1/8	46.9	28.1	5.0	17.6	14	4.0	16.4	50
EST06G02			G 1/4	48.9		6.5		17		22.4	50
EST06G03			G 3/8	49.9		6.5		20		27.4	50
EST08G01	8	14.5	G 1/8	50.1	30.9	5.0	18.7	14	6.0	19.4	50
EST08G02			G 1/4	52.1		6.5		17		25.4	50
EST08G03			G 3/8	53.1		6.5		20		30.4	50
EST08G04			G 1/2	54.1		8.0		24		40.4	25
EST10G01	10	17.5	G 1/8	53.8	34.6	5.0	19.6	17	8.0	28.4	25
EST10G02			G 1/4	55.8		6.5		17		28.4	25
EST10G03			G 3/8	56.8		6.5		20		34.4	25
EST10G04			G 1/2	57.8		8.0		24		48.4	25
EST12G02	12	20.5	G 1/4	62.2	40.3	6.5	21.9	19	10.0	43.2	25
EST12G03			G 3/8	63.2		6.5		20		43.2	25
EST12G04			G 1/2	64.2		8.0		24		55.2	20

Dimensions (NPT Thread)

Unit : mm



Model	ØD (INCH)	ØP	T	L	E	A	B	H (Hex)	ORIFICE	WEIGHT (g)	BOX (EA)
EST5/32U	5/32	10.5	UNF 10/32	42.1	25.0	3.6	16.2	7/16	2.5	9.6	100
EST5/32N1			NPT 1/8	45.7		8.5		7/16	3.0	11.6	100
EST5/32N2			NPT 1/4	48.7		10.5		9/16	3.0	15.6	50
EST3/16U	3/16	11.5	UNF 10/32	41.5	25.1	3.6	16.8	7/16	3.0	9.4	50
EST3/16N1			NPT 1/8	45.1		8.5		7/16	3.0	11.4	50
EST3/16N2			NPT 1/4	48.1		10.5		9/16	3.0	15.4	50
EST3/16N3			NPT 3/8	49.1		11.5		11/16	3.0	19.4	50
EST1/4U	1/4	13.0	UNF 10/32	47.4	28.0	3.6	17.3	1/2	2.5	14.4	50
EST1/4N1			NPT 1/8	49.3		8.5		1/2	4.5	16.4	50
EST1/4N2			NPT 1/4	52.0		10.5		9/16	4.5	22.4	50
EST1/4N3	NPT 3/8	53.0	11.5	11/16	4.5	42.4	50				
EST5/16N1	5/16	14.5	NPT 1/8	53.7	30.9	8.5	18.2	9/16	6.0	22.4	50
EST5/16N2			NPT 1/4	55.7		10.5		9/16	6.0	26.4	50
EST5/16N3			NPT 3/8	56.7		11.5		11/16	6.0	30.4	50
EST5/16N4			NPT 1/2	59.7		14.5		7/8	6.0	50.4	25
EST3/8N1	3/8	17.5	NPT 1/8	63.3	34.7	8.5	19.9	11/16	5.0	34.4	25
EST3/8N2			NPT 1/4	65.3		10.5		11/16	7.0	38.4	25
EST3/8N3			NPT 3/8	66.3		11.5		11/16	7.0	43.4	25
EST3/8N4			NPT 1/2	69.3		14.5		7/8	7.0	58.4	25
EST1/2N2	1/2	21.0	NPT 1/4	57.3	40.8	10.5	23.0	3/4	8.0	45.0	25
EST1/2N3			NPT 3/8	58.3		11.5		3/4	10.0	54.0	25
EST1/2N4			NPT 1/2	61.3		14.5		7/8	10.0	74.0	20

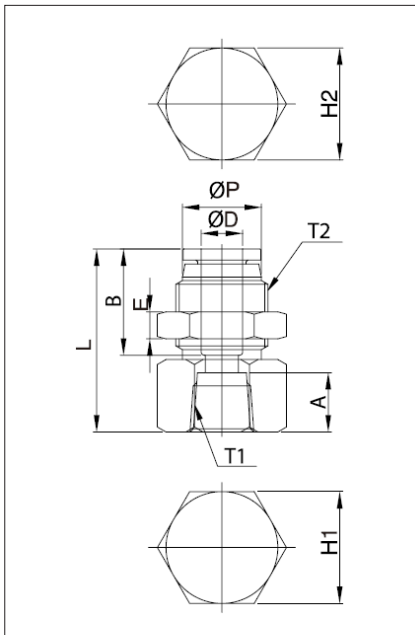
EPFC series



Bulkhead Female Straight

Dimensions (R(PT) Thread)

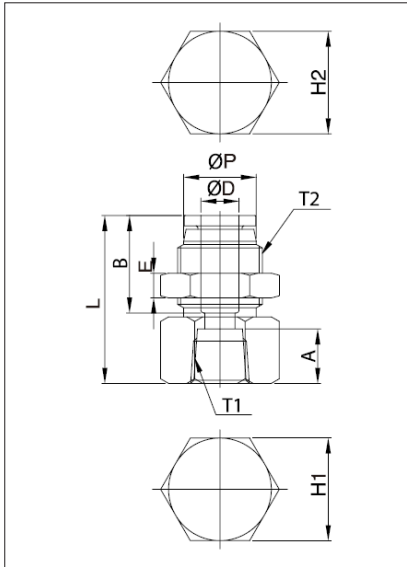
Unit : mm



Model	ØD	ØP	T1	T2	L	E	A	B	H1 (Hex)	H2 (Hex)	Orifice	Weight (g)	Box (EA)
EPFC0401	4	10.0	Rc(PT) 1/8	M12×1.0P	26.7	4	8.0	16.8	14	14	3.0	19.8	100
EPFC0402			Rc(PT) 1/4		28.7		17		24.8			100	
EPFC0403			Rc(PT) 3/8		29.7		22		37.8			50	
EPFC0601	6	12.0	Rc(PT) 1/8	M14×1.0P	28.3	4	8.0	17.6	17	17	5.0	33.8	100
EPFC0602			Rc(PT) 1/4		30.3		17		27.8			100	
EPFC0603			Rc(PT) 3/8		31.3		22		42.8			50	
EPFC0801	8	14.0	Rc(PT) 1/8	M16×1.0P	29.5	5	8.0	18.7	19	19	6.0	43.7	50
EPFC0802			Rc(PT) 1/4		31.5		19		38.7			50	
EPFC0803			Rc(PT) 3/8		32.5		22		44.7			50	
EPFC0804			Rc(PT) 1/2		34.5		24		45.7			25	
EPFC1001	10	16.1	Rc(PT) 1/8	M20×1.0P	30.4	5	8.0	19.6	24	24	8.0	76.5	50
EPFC1002			Rc(PT) 1/4		32.4		24		70.5			50	
EPFC1003			Rc(PT) 3/8		33.4		24		63.5			25	
EPFC1004			Rc(PT) 1/2		36.2		24		54.5			25	
EPFC1202	12	19.0	Rc(PT) 1/4	M22×1.0P	37.9	5	10.0	21.9	24	26	10.0	81.3	25
EPFC1203			Rc(PT) 3/8		37.9		24		72.3			25	
EPFC1204			Rc(PT) 1/2		39.9		24		65.3			25	

Dimensions (G Thread)

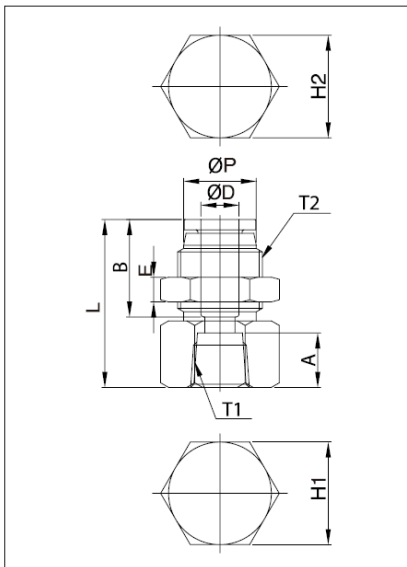
Unit : mm



Model	ØD	ØP	T1	T2	L	E	A	B	H1 (Hex)	H2 (Hex)	Orifice	Weight (g)	Box (EA)
EPFC04G01	4	10.0	G 1/8	M12X1.0P	26.7	4	8.0	16.8	14	14	3.0	17.8	100
EPFC04G02			G 1/4		28.7		17		14	23.8		100	
EPFC04G03			G 3/8		29.7		22		14	36.8		50	
EPFC06G01	6	12.0	G 1/8	M14X1.0P	28.3	4	8.0	17.6	17	17	5.0	32.8	100
EPFC06G02			G 1/4		30.3		17		17	26.8		100	
EPFC06G03			G 3/8		31.3		22		17	40.8		50	
EPFC08G01	8	14.0	G 1/8	M16X1.0P	29.5	5	8.0	18.7	19	19	6.0	42.7	50
EPFC08G02			G 1/4		31.5		19		19	37.7		50	
EPFC08G03			G 3/8		32.5		22		19	43.7		50	
EPFC10G02	10	16.1	G 1/4	M20X1.0P	32.4	5	10.0	19.6	24	24	8.0	69.5	50
EPFC10G03			G 3/8		33.4		24		24	61.5		25	
EPFC10G04			G 1/2		36.2		24		24	52.5		25	
EPFC12G02	12	19.0	G 1/4	M22X1.0P	37.9	5	10.0	21.9	24	26	10.0	80.3	25
EPFC12G03			G 3/8		37.9		24		26	72.3		25	
EPFC12G04			G 1/2		39.9		24		26	64.3		25	

Dimensions (NPT Thread)

Unit : mm



Model	ØD (INCH)	ØP	T1	T2	L	E	A	B	H1 (Hex)	H2 (Hex)	Orifice	Weight (g)	Box (EA)
EPFC5/32N1	5/32	10.0	NPT 1/8	M12X1.0P	27.1	4	8.5	16.3	9/16	14	3.0	19.8	100
EPFC3/16N1	3/16	11.1	NPT 1/8	M12X1.0P	28.3	4	8.5	16.8	11/16	14	4.0	19.8	100
EPFC3/16N2			NPT 1/4		30.3		10.5		11/16			24.8	100
EPFC1/4N1	1/4	13.0	NPT 1/8	M14X1.0P	30.9	4	8.5	17.4	11/16	17	5.0	33.8	100
EPFC1/4N2			NPT 1/4		30.9		10.5		11/16			27.8	100
EPFC5/16N1	5/16	14.0	NPT 1/8	M16X1.0P	29.5	5	8.5	18.7	3/4	19	6.0	43.7	50
EPFC5/16N2			NPT 1/4		31.5		10.5		3/4			38.7	50
EPFC5/16N3			NPT 3/8		32.5		11.5		7/8			45.7	50
EPFC3/8N2	3/8	16.7	NPT 1/4	M20X1.0P	33.3	5	10.5	20.2	15/16	24	8.0	71.4	50
EPFC3/8N3			NPT 3/8		34.3		11.5		15/16			64.4	50
EPFC1/2N2	1/2	20.3	NPT 1/4	M22X1.0P	39.0	5	10.5	22.0	15/16	26	10.0	78.1	25
EPFC1/2N3			NPT 3/8		39.0		11.5		15/16			88.1	25
EPFC1/2N4			NPT 1/2		41.0		14.5		15/16			68.1	25

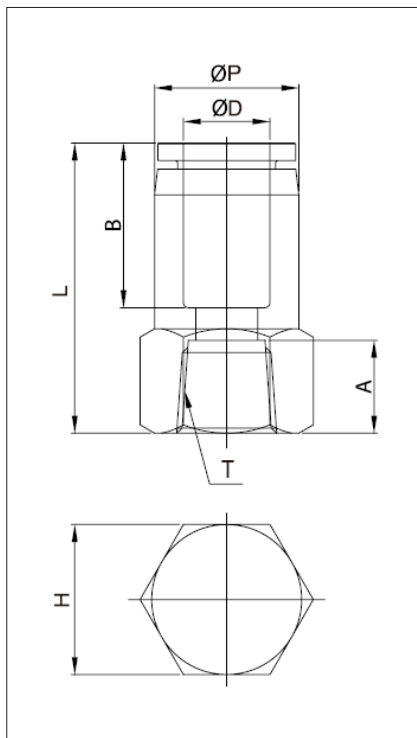
EFC series



Female Straight

Dimensions (R(PT) Thread)

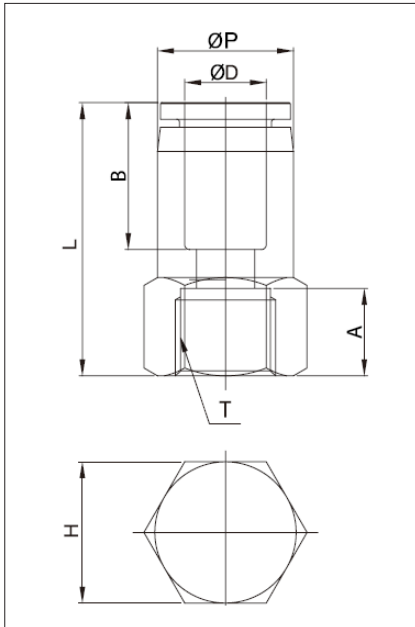
Unit : mm



Model	ØD	ØP	T	L	A	B	H (Hex)	Orifice	Weight (g)	Box (EA)
EFC04M5	4	10.0	M5X0.8	25.6	7.0	15.9	12	3.5	8.8	100
EFC0401			Rc(PT) 1/8	26.7	8.0		14	3.5	15.8	100
EFC0402			Rc(PT) 1/4	28.7	10.0		17	3.5	19.8	100
EFC0403			Rc(PT) 3/8	29.7	11.0		22	3.5	33.8	100
EFC06M5	6	12.0	M5X0.8	25.8	7.0	16.5	12	4.2	10.8	100
EFC0601			Rc(PT) 1/8	27.3	8.0		14	5.0	17.8	100
EFC0602			Rc(PT) 1/4	29.3	10.0		17	5.0	23.8	100
EFC0603			Rc(PT) 3/8	30.2	11.0		22	5.0	35.8	50
EFC0604	Rc(PT) 1/2	32.2	14.0	24	5.0	39.8	50			
EFC0801	8	14.0	Rc(PT) 1/8	28.5	8.0	17.7	14	6.0	18.7	100
EFC0802			Rc(PT) 1/4	30.5	10.0		17	6.0	25.7	100
EFC0803			Rc(PT) 3/8	31.5	11.0		22	6.0	38.7	50
EFC0804			Rc(PT) 1/2	33.5	14.0		24	6.0	45.7	50
EFC1001	10	16.4	Rc(PT) 1/8	31.4	8.0	18.6	17	8.5	31.5	100
EFC1002			Rc(PT) 1/4	31.5	10.0		17	8.5	26.5	100
EFC1003			Rc(PT) 3/8	32.4	11.0		22	8.5	39.5	50
EFC1004			Rc(PT) 1/2	34.4	14.0		24	8.5	40.5	50
EFC1202	12	18.6	Rc(PT) 1/4	34.7	10.0	20.9	22	10.0	53.3	50
EFC1203			Rc(PT) 3/8	34.7	11.0		22	10.0	43.3	50
EFC1204			Rc(PT) 1/2	36.7	14.0		24	10.0	49.3	25

Dimensions (G Thread)

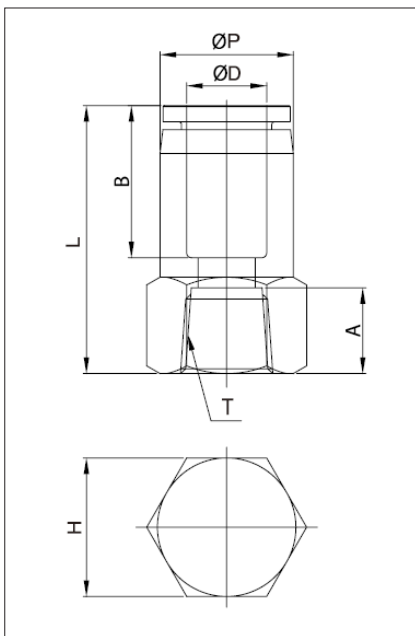
Unit : mm



Model	ØD	ØP	T	L	A	B	H (Hex)	Orifice	Weight (g)	Box (EA)
EFC04G01	4	10.0	G 1/8	28.6	8.0	15.9	14	3.0	14.8	100
EFC04G02			G 1/4	29.6	10.0		17	3.0	19.8	100
EFC04G03			G 3/8	30.6	11.0		22	3.5	32.8	100
EFC06G01	6	12.0	G 1/8	30.0	8.0	16.5	14	5.0	15.8	100
EFC06G02			G 1/4	31.0	10.0		17	5.0	21.8	100
EFC06G03			G 3/8	32.0	11.0		22	5.0	34.8	50
EFC08G01	8	14.0	G 1/8	31.0	8.0	17.7	14	6.0	17.7	100
EFC08G02			G 1/4	32.0	10.0		17	6.0	23.7	100
EFC08G03			G 3/8	33.0	11.0		22	6.0	36.7	50
EFC08G04			G 1/2	35.0	14.0		24	6.0	36.7	50
EFC10G01	10	16.4	G 1/8	31.7	8.0	18.6	17	8.0	30.5	100
EFC10G02			G 1/4	32.7	10.0		17	8.0	25.5	100
EFC10G03			G 3/8	33.7	11.0		22	8.0	39.5	50
EFC10G04			G 1/2	35.7	14.0		24	8.0	39.5	50
EFC12G02	12	18.6	G 1/4	36.4	10.0	20.9	22	10.0	52.3	50
EFC12G03			G 3/8	36.4	11.0		22	10.0	44.3	50
EFC12G04			G 1/2	38.4	14.0		24	10.0	44.3	25

Dimensions (NPT Thread)

Unit : mm



Model	ØD (INCH)	ØP	T	L	A	B	H (Hex)	Orifice	Weight (g)	Box (EA)
EFC5/32N1	5/32	10.0	NPT 1/8	27.6	8.5	15.3	9/16	3.5	15.8	100
EFC5/32N2			NPT 1/4	29.6	10.5		11/16	3.5	19.8	100
EFC3/16N1	3/16	11.1	NPT 1/8	28.2	8.5	16.8	9/16	4.0	15.8	100
EFC3/16N2			NPT 1/4	30.2	10.5		11/16	4.0	19.8	100
EFC1/4N1	1/4	13.0	NPT 1/8	28.7	8.5	17.4	9/16	5.0	18.8	100
EFC1/4N2			NPT 1/4	30.7	10.5		11/16	5.0	23.8	100
EFC1/4N3			NPT 3/8	32.7	11.5		7/8	5.0	39.8	50
EFC5/16N1	5/16	14.0	NPT 1/8	29.0	8.5	18.7	9/16	6.0	18.7	100
EFC5/16N2			NPT 1/4	31.0	10.5		11/16	6.0	25.7	100
EFC5/16N3			NPT 3/8	32.0	11.5		7/8	6.0	38.7	50
EFC5/16N4			NPT 1/2	35.9	14.5		15/16	6.0	45.7	50
EFC3/8N1	3/8	16.7	NPT 1/8	31.8	8.5	20.2	11/16	8.0	29.4	100
EFC3/8N2			NPT 1/4	32.6	10.5		11/16	8.0	26.4	100
EFC3/8N3			NPT 3/8	34.1	11.5		7/8	8.0	39.4	50
EFC3/8N4			NPT 1/2	37.8	14.5		15/16	8.0	41.4	25
EFC1/2N2	1/2	20.6	NPT 1/4	36.2	10.5	22.0	7/8	10.0	53.1	25
EFC1/2N3			NPT 3/8	37.6	11.5		7/8	10.0	45.1	25

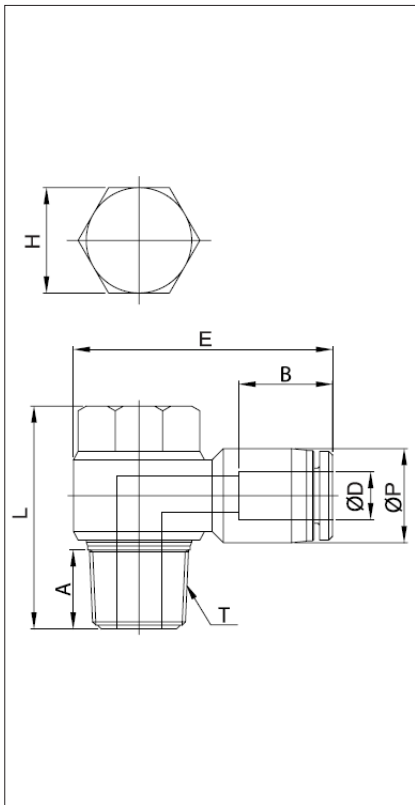
EH series



Male Banjo

Dimensions (R(PT) Thread)

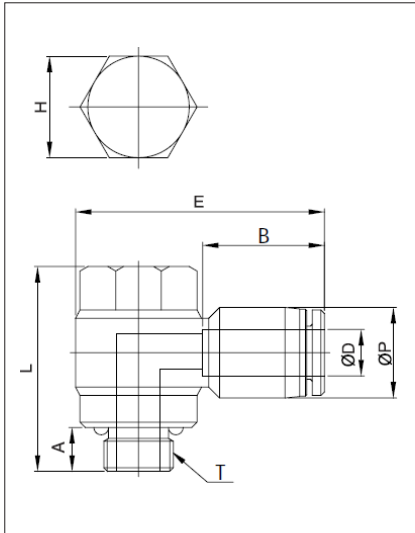
Unit : mm



Model	ØD	ØP	T	L	E	A	B	H (Hex)	Orifice	Weight (g)	Box (EA)
EH03M5	3	7.8	M5X0.8	18.2	21.5	3.6	11.1	8	1.5	7.0	100
EH04M5	4	10.5	M5X0.8	18.2	25.1	3.6	16.3	8	1.5	7.8	50
EH04M6			M6X1.0	20.7	25.1	4.1		8	2.0	8.8	50
EH0401			R(PT) 1/8	25.0	30.5	8.0		11	3.0	14.8	50
EH0402			R(PT) 1/4	28.8	34.5	10.0		15	3.2	25.8	50
EH06M5	6	12.5	M5X0.8	18.2	27.8	3.6	17.6	8	2.0	8.7	50
EH06M6			M6X1.0	20.7	27.8	4.1		8	2.0	9.7	50
EH0601			R(PT) 1/8	25.0	31.2	8.0		11	3.0	15.7	50
EH0602			R(PT) 1/4	28.8	35.0	10.0		15	4.5	26.7	50
EH0603			R(PT) 3/8	32.7	38.7	11.0		19	4.3	49.7	25
EH0604			R(PT) 1/2	39.4	44.9	14.0		24	5.0	73.7	25
EH0801	8	14.8	R(PT) 1/8	25.0	33.0	8.0	18.7	11	3.0	15.7	50
EH0802			R(PT) 1/4	28.8	36.8	10.0		15	4.5	26.7	50
EH0803			R(PT) 3/8	32.7	40.1	11.0		19	4.3	44.7	25
EH0804			R(PT) 1/2	39.4	45.8	14.0		24	6.0	75.7	25
EH1001	10	17.5	R(PT) 1/8	25.0	35.0	8.0	19.6	11	3.0	16.2	25
EH1002			R(PT) 1/4	28.8	38.8	10.0		15	4.5	29.2	25
EH1003			R(PT) 3/8	32.7	42.2	11.0		19	4.3	46.2	25
EH1004			R(PT) 1/2	39.4	47.5	14.0		24	6.0	79.2	20
EH1202	12	20.5	R(PT) 1/4	28.8	40.8	10.0	21.9	15	4.5	32.1	25
EH1203			R(PT) 3/8	32.7	45.9	11.0		19	4.3	54.1	25
EH1204			R(PT) 1/2	39.4	50.1	14.0		24	6.0	74.1	20

Dimensions (G Thread)

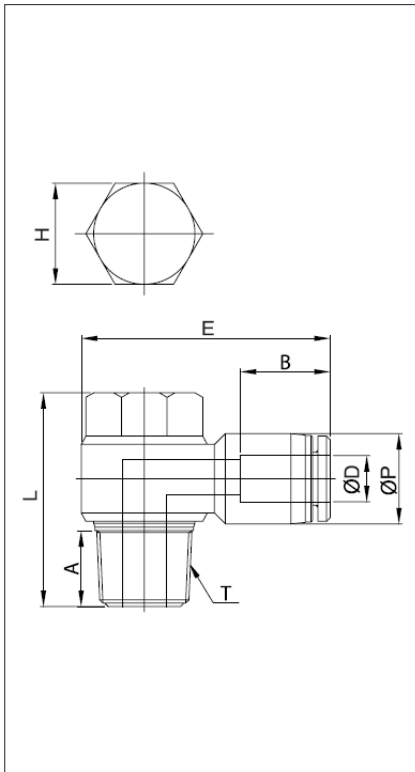
Unit : mm



Model	ØD	ØP	T	L	E	A	B	H (Hex)	Orifice	Weight (g)	Box (EA)
EH04G01	4	10.5	G 1/8	23.5	32.4	4.5	16.3	8	3.0	14.8	50
EH04G02			G 1/4	28.0	34.2	6.0		12	3.2	24.8	50
EH06G01	6	12.5	G 1/8	23.5	33.5	4.5	17.6	8	3.0	15.7	50
EH06G02			G 1/4	28.0	37.3	6.0		12	4.5	23.7	50
EH06G03			G 3/8	32.5	39.8	6.0		14	5.0	47.7	25
EH08G01	8	14.5	G 1/8	23.5	34.2	4.5	18.7	8	3.0	16.7	50
EH08G02			G 1/4	28.0	38.3	6.0		12	4.5	25.7	50
EH08G03			G 3/8	32.5	41.8	6.0		14	6.0	49.7	25
EH08G04			G 1/2	34.0	45.9	7.5		19	6.5	68.7	25
EH10G02	10	17.5	G 1/4	28.0	39.5	6.0	19.6	12	4.5	27.2	25
EH10G03			G 3/8	32.5	42.5	6.0		14	6.0	50.2	25
EH10G04			G 1/2	34.0	48.6	7.5		19	8.0	73.2	20
EH12G03	12	20.5	G 3/8	32.5	44.8	6.0	21.9	14	6.0	53.1	25
EH12G04			G 1/2	34.0	50.3	7.5		19	8.0	73.1	20

Dimensions (NPT Thread)

Unit : mm



Model	ØD (INCH)	ØP	T	L	E	A	B	H (Hex)	Orifice	Weight (g)	Box (EA)
EH1/8U	1/8	7.8	UNF 10/32	18.2	21.5	3.6	11.1	5/16	1.5	7.0	50
EH5/32U	5/32	10.5	UNF 10/32	18.2	25.1	3.6	16.3	5/16	1.5	7.8	100
EH5/32N1			NPT 1/8	25.0	30.5	8.0		7/16	3.0	23.8	50
EH5/32N2			NPT 1/4	28.8	34.5	10.0		5/16	3.2	29.8	50
EH3/16U	3/16	11.5	UNF 10/32	18.2	26.6	3.6	16.8	5/16	1.5	7.7	100
EH3/16N1			NPT 1/8	25.0	31.4	8.0		7/16	3.0	23.7	50
EH3/16N2			NPT 1/4	28.8	35.3	10.0		19/32	3.5	29.7	50
EH3/16N3			NPT 3/8	33.7	39.1	11.0		3/4	3.5	37.7	50
EH1/4U	1/4	13.0	UNF 10/32	18.2	28.7	3.6	17.4	5/16	1.5	8.7	50
EH1/4N1			NPT 1/8	25.0	32.0	8.0		7/16	3.0	23.7	50
EH1/4N2			NPT 1/4	28.8	35.9	10.0		19/32	4.5	35.7	50
EH1/4N3			NPT 3/8	33.7	39.7	11.0		3/4	6.0	44.7	25
EH5/16N1	5/16	14.5	NPT 1/8	35.0	33.0	8.0	18.7	7/16	3.0	34.7	50
EH5/16N2			NPT 1/4	28.8	36.8	10.0		19/32	4.5	36.7	50
EH5/16N3			NPT 3/8	33.7	40.1	11.0		3/4	6.0	59.7	25
EH5/16N4			NPT 1/2	39.4	45.8	14.0		15/16	6.5	96.7	20
EH3/8N2	3/8	17.5	NPT 1/4	28.8	37.5	10.0	20.2	19/32	4.5	59.2	25
EH3/8N3			NPT 3/8	33.7	42.1	11.0		3/4	6.0	89.2	25
EH3/8N4			NPT 1/2	39.4	47.3	14.0		15/16	7.0	99.2	20
EH1/2N3	1/2	21.0	NPT 3/8	33.7	45.1	11.0	22.0	3/4	6.0	65.0	25
EH1/2N4			NPT 1/2	39.4	50.5	14.0		15/16	8.0	109.0	20

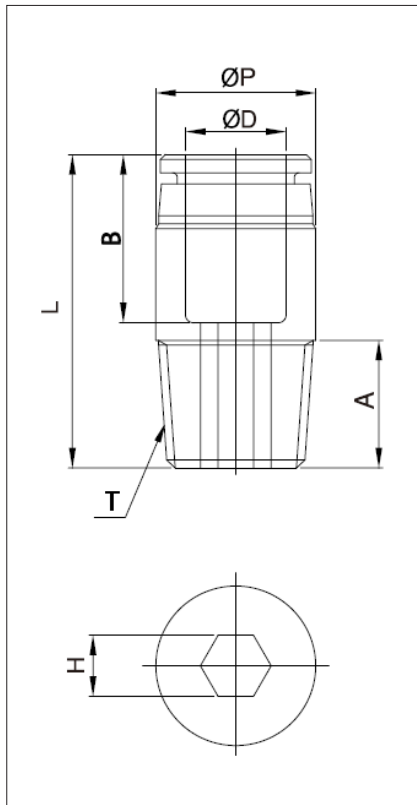
EOC series



Round Male Straight

Dimensions (R(PT) Thread)

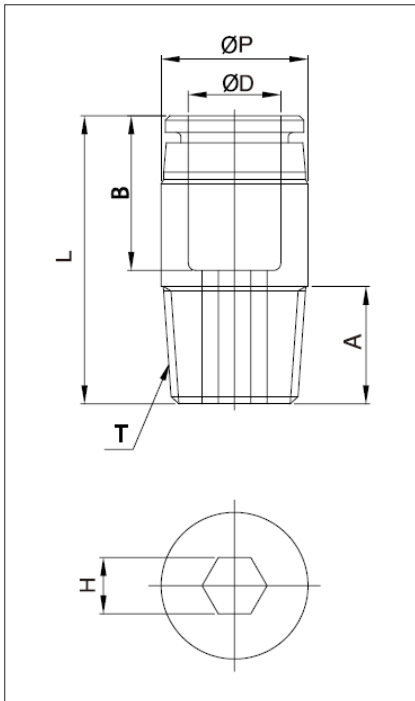
Unit : mm



Model	ØD	ØP	T	L	A	B	H (Hex)	Orifice	Weight (g)	Box (EA)
EOC04M5	4	10	M5X0.8	21.8	4.6	15.9	2	2.0	5.8	100
EOC04M6		10	M6X1.0	21.8	4.6		3	3.0	5.8	100
EOC0401		10	R(PT) 1/8	20.4	8.0		3	3.0	7.8	100
EOC0402		14	R(PT) 1/4	20.4	10.0		3	3.0	13.8	100
EOC0403		17	R(PT) 3/8	20.4	11.0		3	3.0	23.8	100
EOC06M5	6	12	M5X0.8	22.6	4.6	16.5	2	2.0	7.8	100
EOC06M6		12	M6X1.0	24.1	4.6		3	3.0	7.8	100
EOC0601		12	R(PT) 1/8	21.8	8.0		4	4.0	14.8	100
EOC0602		14	R(PT) 1/4	22.5	10.0		4	4.0	24.8	100
EOC0603		17	R(PT) 3/8	22.5	11.0		4	4.0	24.8	100
EOC0801	8	14	R(PT) 1/8	27.0	8.0	17.7	5	5.0	11.7	100
EOC0802		14	R(PT) 1/4	25.0	10.0		6	6.0	14.7	100
EOC0803		17	R(PT) 3/8	25.0	11.0		6	6.0	24.7	100
EOC0804		21	R(PT) 1/2	25.0	14.0		6	6.0	45.7	50
EOC1001	10	17	R(PT) 1/8	27.9	8.0	18.6	5	5.0	15.5	100
EOC1002		17	R(PT) 1/4	26.6	10.0		6	6.0	16.5	100
EOC1003		17	R(PT) 3/8	26.6	11.0		8	8.0	22.5	100
EOC1004		21	R(PT) 1/2	26.6	14.0		8	8.0	39.5	50
EOC1201	12	19	R(PT) 1/8	32.4	8.0	20.9	5	5.0	23.3	50
EOC1202		19	R(PT) 1/4	32.4	10.0		6	6.0	25.3	50
EOC1203		19	R(PT) 3/8	32.4	11.0		8	8.0	31.3	50
EOC1204		21	R(PT) 1/2	32.4	14.0		8	8.0	38.3	50

Dimensions (NPT Thread)

Unit : mm



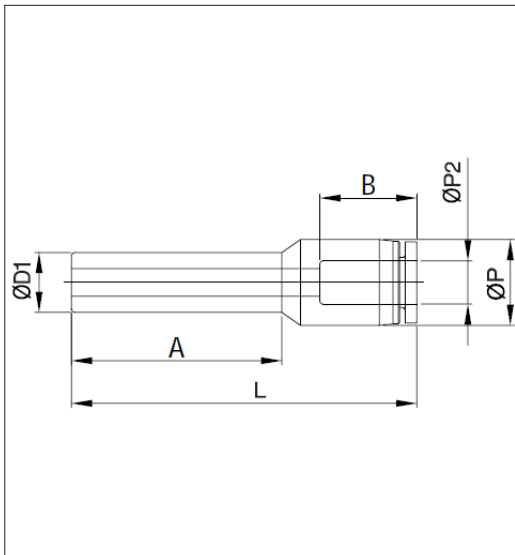
Model	ØD (INCH)	ØP	T	L	A	B	H (Hex)	Orifice	Weight (g)	Box (EA)
EOC5/32U	5/32	11.0	UNF 10/32	20.8	3.5	15.3	3/32	2.4	5.8	100
EOC5/32N1		11.0	NPT 1/8	21.0	8.5		1/8	3.2	6.8	100
EOC5/32N2		14.0	NPT 1/4	22.0	10.5		1/8	3.2	13.8	100
EOC3/16U	3/16	11.0	UNF 10/32	22.4	3.5	16.9	3/32	2.4	5.8	100
EOC3/16N1		12.0	NPT 1/8	22.7	8.5		1/8	3.2	6.8	100
EOC3/16N2		14.0	NPT 1/4	23.7	10.5		1/8	3.2	13.8	100
EOC1/4U	1/4	13.0	UNF 10/32	22.9	3.5	17.4	3/32	2.4	8.8	100
EOC1/4N1		13.0	NPT 1/8	23.6	8.5		3/16	4.8	9.8	100
EOC1/4N2		14.0	NPT 1/4	23.8	10.5		3/16	4.8	12.8	100
EOC5/16N1	5/16	14.0	NPT 1/8	27.5	8.5	18.7	3/16	4.8	14.7	100
EOC5/16N2		14.0	NPT 1/4	25.5	10.5		1/4	6.4	17.7	100
EOC5/16N3		18.0	NPT 3/8	25.5	11.5		1/4	6.4	22.7	100
EOC3/8N1	3/8	18.0	NPT 1/8	28.2	8.5	20.2	3/16	4.8	23.4	100
EOC3/8N2		18.0	NPT 1/4	28.2	10.5		1/4	6.4	25.4	100
EOC3/8N3		18.0	NPT 3/8	28.2	11.5		5/16	8.0	34.4	100
EOC3/8N4		22.0	NPT 1/2	29.2	14.5		5/16	8.0	43.4	50
EOC1/2N2	1/2	21.0	NPT 1/4	35.4	10.5	22.0	1/4	6.4	31.1	50
EOC1/2N3		21.0	NPT 3/8	32.9	11.5		3/8	9.5	34.1	50
EOC1/2N4		22.0	NPT 1/2	33.0	14.5		3/8	9.5	43.1	50

ER series



Plug-In Reducer

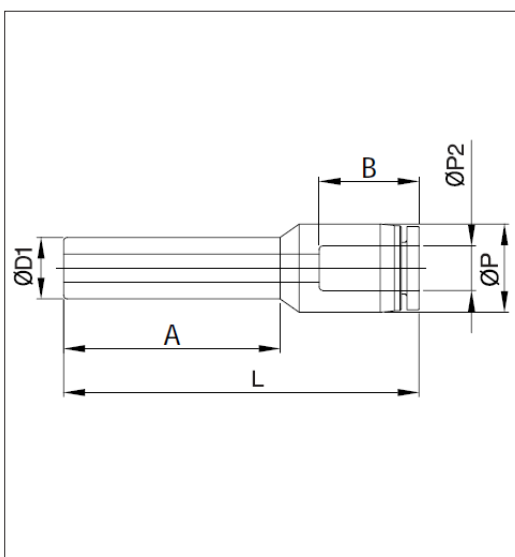
Dimensions (Metric)



Unit : mm

Model	ØD1	ØD2	ØP	L	A	B	Orifice	Weight (g)	Box (EA)
ER0604	6	4	10.5	41.0	21.7	16.3	3.0	2.8	100
ER0804	8	4	10.5	42.0	22.7	16.3	3.0	3.8	100
ER0806	8	6	12.5	44.3	23.7	17.6	4.8	4.7	100
ER1006	10	6	12.5	47.3	28.7	17.6	6.0	4.7	50
ER1008	10	8	14.8	49.7	27.7	18.7	6.8	5.7	50
ER1206	12	6	12.5	50.2	33.8	17.6	4.8	5.7	50
ER1208	12	8	14.8	52.5	30.7	18.7	8.0	6.7	50
ER1210	12	10	17.5	56.5	31.2	19.6	8.0	9.2	50

Dimensions (Inch)



Unit : mm

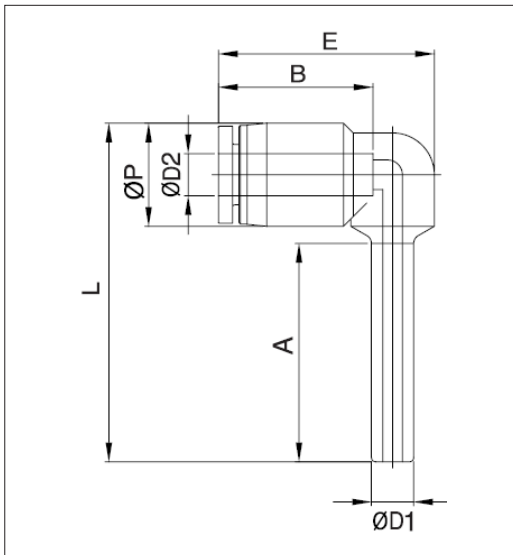
Model	ØD1 (INCH)	ØD2 (INCH)	ØP	L	A	B	Orifice	Weight (g)	Box (EA)
ER1/8 1/4	1/8	1/4	13.0	35.8	16.5	17.4	1.3	2.7	100
ER5/32 1/8	5/32	1/8	7.6	31.7	18.5	11.3	2.0	3.0	100
ER5/32 1/4	5/32	1/4	13.0	37.8	18.5	17.4	2.0	2.7	100
ER1/4 1/8	1/4	1/8	7.6	31.7	20.9	11.3	2.5	4.0	100
ER1/4 5/32	1/4	5/32	10.5	40.4	23.5	16.3	3.4	3.8	100
ER5/16 5/32	5/16	5/32	10.5	42.9	26.0	16.3	5.0	4.8	100
ER5/16 1/4	5/16	1/4	13.0	48.0	29.7	17.4	4.0	4.7	100
ER3/8 1/4	3/8	1/4	13.0	48.0	31.3	17.4	5.6	4.7	50
ER3/8 5/16	3/8	5/16	14.5	44.7	25.0	18.7	6.5	5.7	50
ER1/2 1/4	1/2	1/4	13.0	48.3	30.9	17.4	5.7	5.7	50
ER1/2 5/16	1/2	5/16	14.5	48.5	33.2	18.7	7.0	6.7	50
ER1/2 3/8	1/2	3/8	17.5	51.8	31.8	20.2	8.0	6.2	50

ERL series



Plug-In Elbow

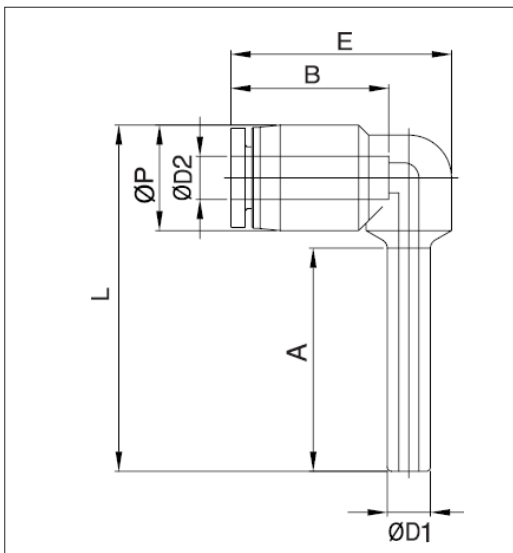
Dimensions (Metric)



Unit : mm

Model	ØD1	ØD2	ØP	L	E	A	B	Orifice	Weight (g)	Box (EA)
ERL0604	6	4	12.5	43.8	18.8	25.0	17.6	2.0	4.0	50
ERL0806	8	6	14.8	47.8	20.3	26.0	18.7	4.0	6.1	50
ERL1008	10	8	17.5	52.4	23.0	28.0	19.6	6.0	7.7	50
ERL1210	12	10	20.5	56.8	24.2	30.0	21.9	7.0	11.2	25

Dimensions (Inch)



Unit : mm

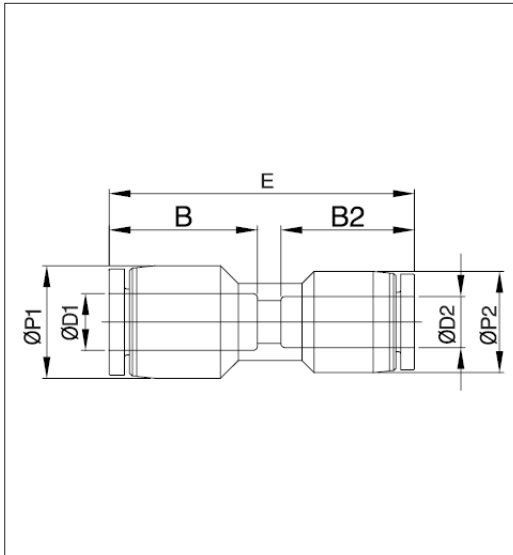
Model	ØD1 (INCH)	ØD2 (INCH)	ØP	L	E	A	B	Orifice	Weight (g)	Box (EA)
ERL1/4 5/32	1/4	5/32	10.5	43.8	18.7	25.0	16.7	2.0	5.8	50
ERL5/16 1/4	5/16	1/4	13.0	48.5	20.5	26.0	17.4	4.2	7.7	50
ERL3/8 1/4	3/8	1/4	13.0	50.5	20.5	28.0	17.4	4.2	14.7	50
ERL3/8 5/16	3/8	5/16	14.5	54.3	23.1	28.0	19.1	6.0	15.7	25

EUR series



Reducer

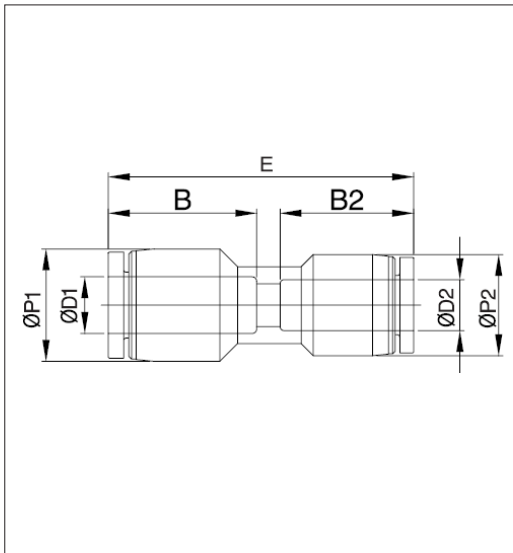
Dimensions (Metric)



Unit : mm

Model	ØD1	ØD2	ØP1	ØP2	E	B1	B2	Orifice	Weight (g)	Box (EA)
EUR0604	6	4	12.5	10.5	36.6	17.6	16.3	3.0	5.5	100
EUR0804	8	4	14.8	10.5	38.7	18.7	16.3	3.2	5.5	100
EUR0806	8	6	14.8	12.5	37.6	18.7	17.6	4.0	7.4	100
EUR1006	10	6	17.5	12.5	39.9	19.6	17.6	5.0	7.9	50
EUR1008	10	8	17.5	14.8	41.0	19.6	18.7	6.5	8.9	50
EUR1208	12	8	20.5	14.8	45.9	21.9	18.7	6.5	11.8	50
EUR1210	12	10	20.5	17.5	44.0	21.9	19.6	8.0	13.3	50
EUR1612	16	12	25.5	20.5	49.7	24.0	21.9	10.0	24.1	25

Dimensions (Inch)



Unit : mm

Model	ØD1 (INCH)	ØD2 (INCH)	ØP1	ØP2	E	B1	B2	Orifice	Weight (g)	Box (EA)
EUR3/16 5/32	3/16	5/32	11.5	10.5	35.0	16.8	16.3	3.2	5.5	100
EUR1/4 5/32	1/4	5/32	13.0	10.5	35.6	17.4	16.3	3.2	5.5	100
EUR1/4 3/16	1/4	3/16	13.0	11.5	36.2	17.4	16.8	3.8	5.4	100
EUR5/16 5/32	5/16	5/32	14.5	10.5	38.7	18.7	16.3	3.2	5.5	50
EUR5/16 1/4	5/16	1/4	14.5	13.0	38.1	18.7	17.4	5.0	7.4	50
EUR3/8 1/4	3/8	1/4	17.5	13.0	39.7	20.2	17.4	5.0	7.9	50
EUR3/8 5/16	3/8	5/16	17.5	14.5	41.0	20.2	18.7	7.0	10.9	50
EUR1/2 3/8	1/2	3/8	21.0	17.5	45.3	22.0	20.2	8.0	16.2	25

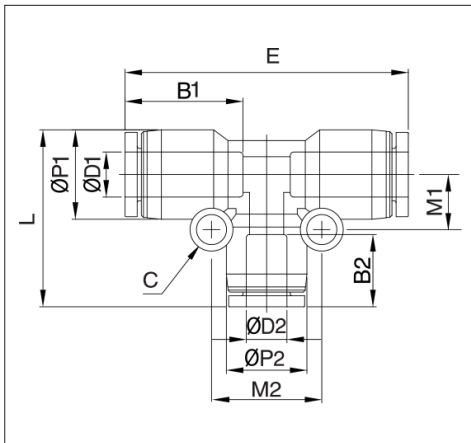
-
-
-
-
-
- SC, SCS
- SC-F
- ASCM
- KAS2000 /4000
- KAS500 /600
- SCPV
- KHVC
- KHVF
- KHVV
- KHVM
- KHBVV
- SH

EGT series



Reducer Tee

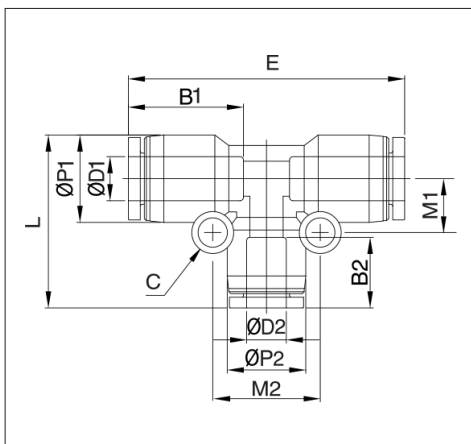
Dimensions (Metric)



Unit : mm

Model	ØD1	ØD2	ØP1	ØP2	L	E	C	B1	B2	M1	M2	Orifice	Weight (g)	Box (EA)
EGT0604	6	4	12.5	10.5	25.4	41.6	3.3	17.6	16.3	7.9	13.8	3.0	8.2	50
EGT0804	8	6	14.8	12.5	29.4	46.1	4.3	18.7	17.6	9.7	17.0	5.0	11.1	50
EGT1006	10	6	17.5	12.5	31.9	49.2	4.3	19.6	17.6	10.9	16.8	5.0	14.1	50
EGT1008	10	8	17.5	14.8	33.5	49.2	4.3	19.6	18.7	10.9	18.8	6.5	15.1	50
EGT1208	12	8	20.5	14.8	35.8	56.0	4.3	21.9	18.7	12.4	18.8	7.0	20.9	25
EGT1210	12	10	20.5	17.5	37.6	56.0	4.3	21.9	19.6	12.4	21.9	8.0	25.4	25
EGT1610	16	10	25.5	17.5	43.1	60.8	4.3	24.0	19.6	15.9	22.8	8.0	40.2	15
EGT1612	16	12	25.5	20.5	45.5	63.7	4.3	24.0	21.9	15.9	25.8	10.0	44.1	15

Dimensions (Inch)



Unit : mm

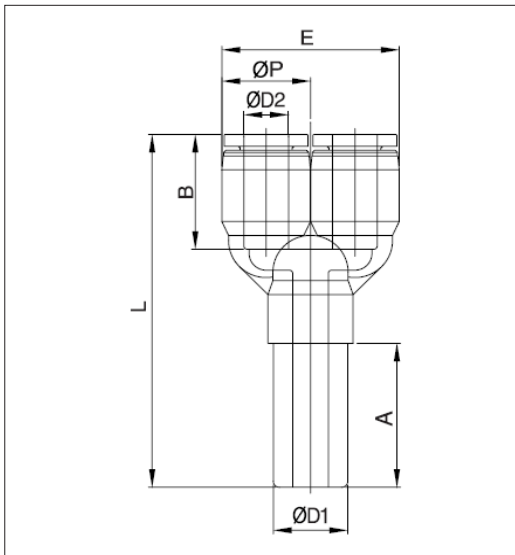
Model	ØD1	ØD2	ØP1	ØP2	L	E	C	B1	B2	M1	M2	Orifice	Weight (g)	Box (EA)
EGT1/4 5/32	1/4	5/32	13.0	10.5	26.6	40.6	4.3	17.6	16.3	8.3	14.5	3.2	8.2	50
EGT5/16 1/4	5/16	1/4	14.5	13.0	28.4	43.2	4.5	18.7	17.6	9.7	17.5	5.0	11.1	50
EGT3/8 1/4	3/18	1/4	17.5	13.0	32.2	48.6	4.5	20.2	17.6	11.0	17.5	5.0	17.1	50
EGT3/8 5/16	3/8	5/16	17.5	14.5	33.5	50.6	4.5	20.2	18.7	10.9	18.8	6.5	18.1	50
EGT1/2 3/8	1/2	3/8	21.0	17.5	36.8	58.5	4.5	22.0	20.2	12.8	22.0	8.0	25.2	25

EWJ series



Plug-In Reducer Y

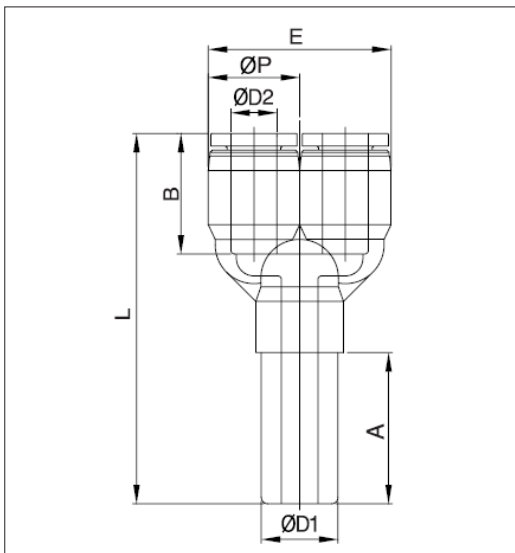
Dimensions (Metric)



Unit : mm

Model	ØA	ØD	ØP	L	E	A	B	Orifice	Weight (g)	Box (EA)
EWJ0604	6	4	10.5	51.5	21.0	24.0	17.6	4.0	6.6	100
EWJ0806	8	6	12.5	56.7	25.0	26.0	18.7	5.6	9.4	50
EWJ1008	10	8	14.5	61.8	29.0	28.0	19.6	7.0	12.4	50
EWJ1210	12	10	17.5	68.1	35.0	30.0	21.9	9.0	19.4	25

Dimensions (Inch)



Unit : mm

Model	ØA (INCH)	ØD (INCH)	ØP	L	E	A	B	Orifice	Weight (g)	Box (EA)
EWJ1/4 5/32	1/4	5/32	10.5	55.2	21.0	25.0	16.3	3.0	14.6	100
EWJ5/16 1/4	5/16	1/4	13.0	61.9	29.0	26.3	17.4	5.0	22.4	50
EWJ3/8 1/4	3/8	1/4	13.0	64.2	35.0	28.0	17.4	5.0	39.4	50
EWJ3/8 5/16	3/8	5/16	14.5	62.8	35.0	28.0	18.7	6.0	39.4	50

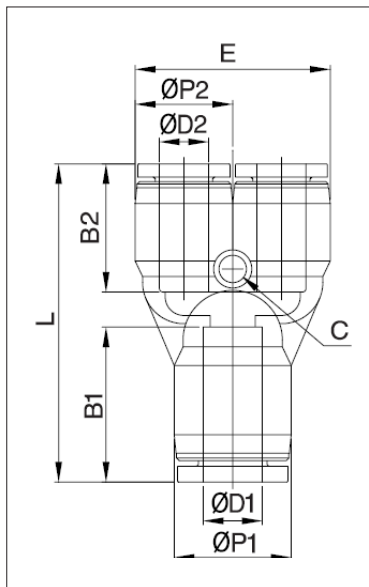
-
-
-
-
-
- SC, SCS
- SC-F
- ASCM
- KAS2000 /4000
- KAS500 /600
- SCPV
- KHVC
- KHVF
- KHVV
- KHVM
- KHBVU
- SH

ERY series



Union Y

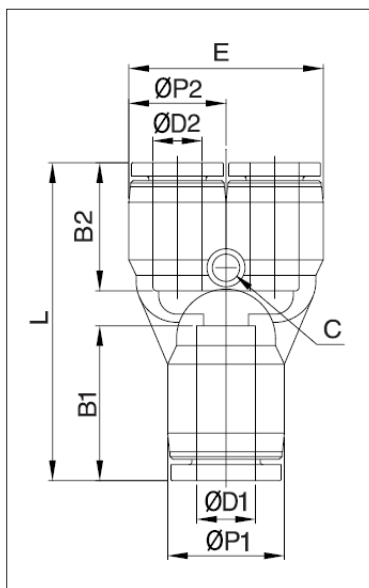
Dimensions (Metric)



Unit : mm

Model	ØD1	ØD2	ØP1	ØP2	L	E	C	B1	B2	Orifice	Weight (g)	Box (EA)
ERY0604	6	4	12.5	10.5	37.9	21.0	3.3	17.6	16.3	3.4	7.3	100
ERY0804	8	4	14.8	10.5	39.7	21.0	3.3	18.7	16.3	3.7	9.3	50
ERY0806	8	6	14.8	12.5	41.3	25.0	3.3	18.7	17.6	5.4	10.1	50
ERY1006	10	6	17.5	12.5	43.0	25.0	3.3	19.6	17.6	5.6	12.6	50
ERY1008	10	8	17.5	14.8	43.3	29.6	4.3	19.6	18.7	7.0	14.6	50
ERY1208	12	8	20.5	14.8	47.8	29.6	3.3	21.9	18.7	7.3	16.5	25
ERY1210	12	10	20.5	17.5	46.5	35.0	4.3	21.9	19.6	8.0	21.5	25

Dimensions (Inch)



Unit : mm

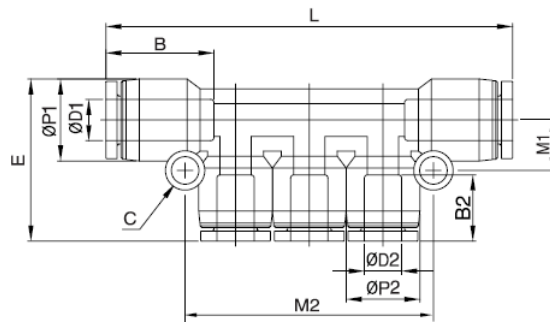
Model	ØD1 (INCH)	ØD2 (INCH)	ØP1	ØP2	L	E	C	B1	B2	Orifice	Weight (g)	Box (EA)
ERY3/16 5/32	3/16	5/32	11.5	10.5	37.0	21.0	3.3	16.8	16.3	3.3	8.3	50
ERY1/4 5/32	1/4	5/32	13.0	10.5	38.1	21.0	3.3	17.4	16.3	3.3	8.3	100
ERY1/4 3/16	1/4	3/16	13.0	11.5	38.7	23.0	3.3	17.4	16.8	4.0	8.1	50
ERY5/16 5/32	5/16	5/32	14.5	10.5	39.7	21.0	3.3	18.7	16.3	3.7	9.3	100
ERY5/16 1/4	5/16	1/4	14.5	13.0	42.1	26.0	3.3	18.7	17.4	5.0	12.1	50
ERY3/8 1/4	3/8	1/4	17.5	13.0	43.2	26.0	3.3	19.6	17.4	5.0	14.6	50
ERY3/8 5/16	3/8	5/16	17.5	14.5	43.3	29.0	4.3	19.6	18.7	7.0	16.6	50
ERY1/2 5/16	1/2	5/16	21.0	14.5	48.0	29.0	3.3	22.0	18.7	6.4	18.4	25
ERY1/2 3/8	1/2	3/8	21.0	17.5	50.8	35.0	4.5	22.0	20.2	7.0	26.2	25

EKG series



Reducer Triple Branch Union

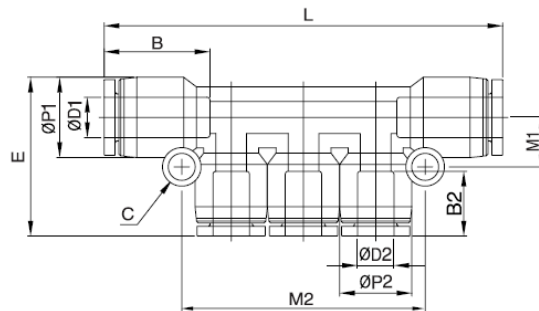
Dimensions (Metric)



Unit : mm

Model	ØD1	ØD2	ØP1	ØP2	L	E	C	B1	B2	M1	M2	Orifice	Weight (g)	Box (EA)
EKG0604	6	4	12.5	10.5	63.7	24.2	3.3	17.6	16.3	7.6	34.0	3.0	12.8	25
EKG0804	8	4	14.8	10.5	65.7	28.5	4.3	18.7	16.3	9.2	34.8	3.0	14.8	25
EKG0806	8	6	14.8	12.5	71.7	30.0	4.3	18.7	17.6	9.3	41.1	4.0	17.5	25
EKG1006	10	6	17.5	12.5	78.1	32.0	4.3	19.6	17.6	9.5	41.7	4.0	22.5	20
EKG1008	10	8	17.5	14.8	83.4	34.5	4.3	19.6	18.7	8.5	47.0	6.5	26.5	20

Dimensions (Inch)



Unit : mm

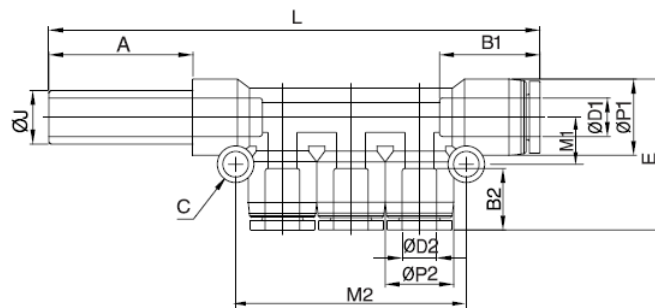
Model	ØD1	ØD2	ØP1	ØP2	L	E	C	B1	B2	M1	M2	Orifice	Weight (g)	Box (EA)
EKG3/16 5/32	3/16	5/32	11.5	10.5	60.5	26.3	4.5	16.8	16.3	7.6	34.0	3.2	24.1	25
EKG1/4 5/32	1/4	5/32	13.0	10.5	61.6	26.6	4.5	17.4	16.3	8.8	36.0	3.2	24.1	25
EKG5/16 5/32	5/16	5/32	14.5	10.5	65.6	28.2	4.3	18.7	16.3	9.2	34.8	3.2	49.1	25
EKG5/16 3/16	5/16	3/16	14.5	11.5	68.7	28.9	4.5	18.7	16.8	9.3	41.1	4.0	48.8	25
EKG5/16 1/4	5/16	1/4	14.5	13.0	71.9	30.0	4.5	18.7	17.4	9.7	43.5	5.0	48.8	25
EKG3/8 1/4	3/8	1/4	17.5	13.0	74.2	32.2	4.5	20.2	17.4	11.0	43.5	5.0	53.3	20
EKG3/8 5/16	3/8	5/16	17.5	14.5	83.6	34.5	4.3	20.2	18.7	8.5	47.0	6.6	53.3	20

EKJ series



Plug-In Reducer Triple Branch

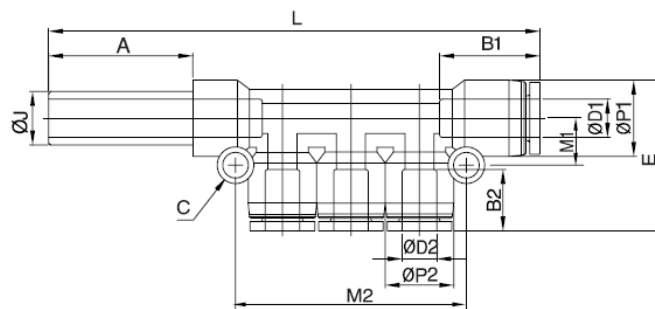
Dimensions (Metric)



Unit : mm

Model	ØD1	ØD2	ØJ	ØP1	ØP2	L	E	C	A	B1	B2	M1	M2	Orifice	Weight (g)	Box (EA)
EKJ0604	6	4	6	12.5	10.5	84.3	24.2	3.3	25.0	17.6	16.3	7.6	34.0	3.0	14.1	25
EKJ0804	8	4	8	14.8	10.5	89.5	28.5	4.3	28.5	18.7	16.3	9.2	34.8	3.0	16.1	25
EKJ0806	8	6	8	14.8	12.5	95.5	34.0	4.3	28.5	18.7	17.6	9.3	41.1	4.0	17.8	25
EKJ1006	10	6	10	17.5	12.5	103.2	31.3	4.3	31.0	19.6	17.6	9.5	41.7	4.0	23.5	20
EKJ1008	10	8	10	17.5	14.8	109.7	34.5	4.3	31.0	19.6	18.7	8.5	47.0	6.5	28.3	15

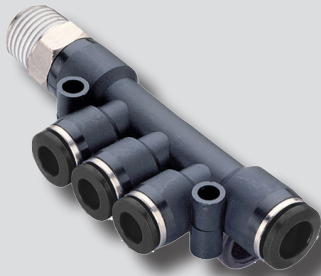
Dimensions (Inch)



Unit : mm

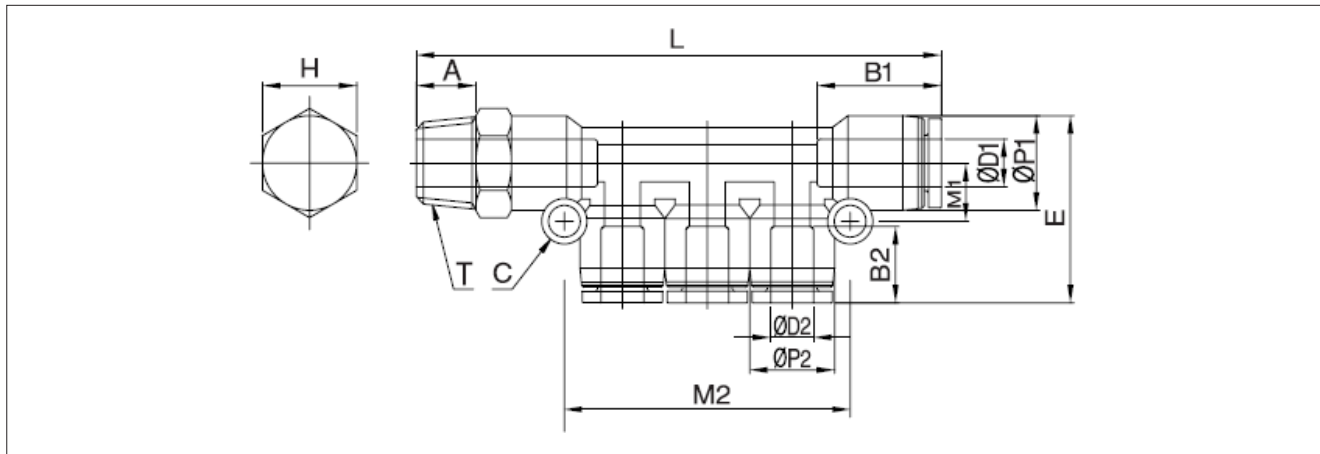
Model	ØD1 (INCH)	ØD2 (INCH)	ØJ	ØP1	ØP2	L	E	C	A	B1	B2	M1	M2	Orifice	Weight (g)	Box (EA)
EKJ3/16 5/32	3/16	5/32	3/16	11.5	10.5	82.4	25.8	4.5	24.0	16.8	16.3	7.6	34.0	2.6	24.1	25
EKJ1/4 5/32	1/4	5/32	1/4	13.0	10.5	84.3	26.6	4.5	25.0	17.4	16.3	8.8	36.0	3.2	24.1	25
EKJ5/16 5/32	5/16	5/32	5/16	14.5	10.5	89.5	28.5	4.3	26.0	18.7	16.3	9.2	34.8	3.2	37.1	25
EKJ5/16 3/16	5/16	3/16	5/16	14.5	11.5	91.9	29.0	4.5	26.0	18.7	16.8	9.3	41.1	4.0	36.8	25
EKJ5/16 1/4	5/16	1/4	5/16	14.5	13.0	91.0	30.0	4.5	26.0	18.7	17.4	9.7	43.5	5.0	36.8	25
EKJ3/8 1/4	3/8	1/4	3/8	17.5	13.0	99.7	32.2	4.5	28.0	20.2	17.4	11.0	43.5	5.0	48.3	20
EKJ3/8 5/16	3/8	5/16	3/8	17.5	14.5	109.7	34.5	4.3	28.0	20.2	18.7	8.5	47.0	6.6	48.3	20

EKD series



Male Reducer Triple Branch

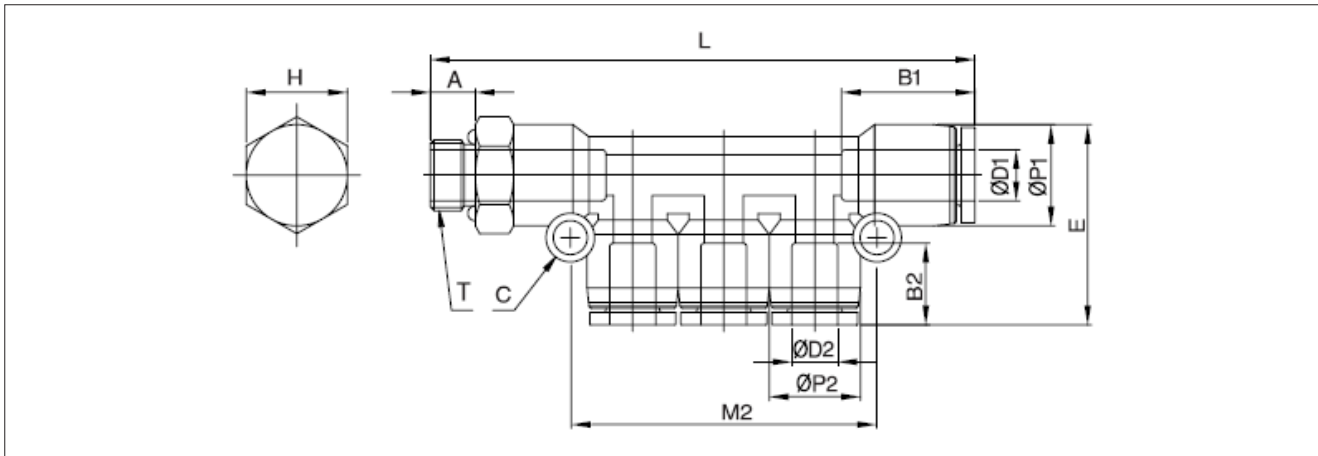
Dimensions (R(PT) Thread)



Unit : mm

Model	ØD1	ØD2	ØP1	ØP2	T	L	E	C	A	B1	B2	M1	M2	H (Hex)	Orifice	Weight (g)	Box (EA)
EKD060401	6	4	12.5	10.5	R(PT) 1/8	72.1	24.2	3.3	8.0	17.6	16.3	7.6	34.0	12	3.0	21.1	25
EKD080401	8	4	14.8	10.5	R(PT) 1/8	73.9	28.5	4.3	8.0	18.7	16.3	9.2	34.8	14	3.0	23.1	25
EKD080402	8	4	14.8	10.5	R(PT) 1/4	76.9	28.5	4.3	10.0	18.7	16.3	9.2	34.8	14	3.0	28.1	25
EKD080601	8	6	14.8	12.5	R(PT) 1/8	79.5	34.0	4.3	8.0	18.7	17.6	9.3	41.1	14	4.0	26.8	25
EKD080602	8	6	14.8	12.5	R(PT) 1/4	82.5	34.0	4.3	10.0	18.7	17.6	9.3	41.1	14	4.0	30.8	25
EKD100602	10	6	17.5	12.5	R(PT) 1/4	89.2	34.5	4.3	10.0	19.6	17.6	9.5	41.7	17	4.0	40.3	25
EKD100603	10	6	17.5	12.5	R(PT) 3/8	90.2	34.5	4.3	11.0	19.6	17.6	9.5	41.7	17	4.0	44.3	20
EKD100802	10	8	17.5	14.8	R(PT) 1/4	94.3	34.5	4.3	10.0	19.6	18.7	8.5	47.0	17	6.5	44.3	25
EKD100803	10	8	17.5	14.8	R(PT) 3/8	95.3	34.5	4.3	11.0	19.6	18.7	8.5	47.0	17	6.5	48.3	20

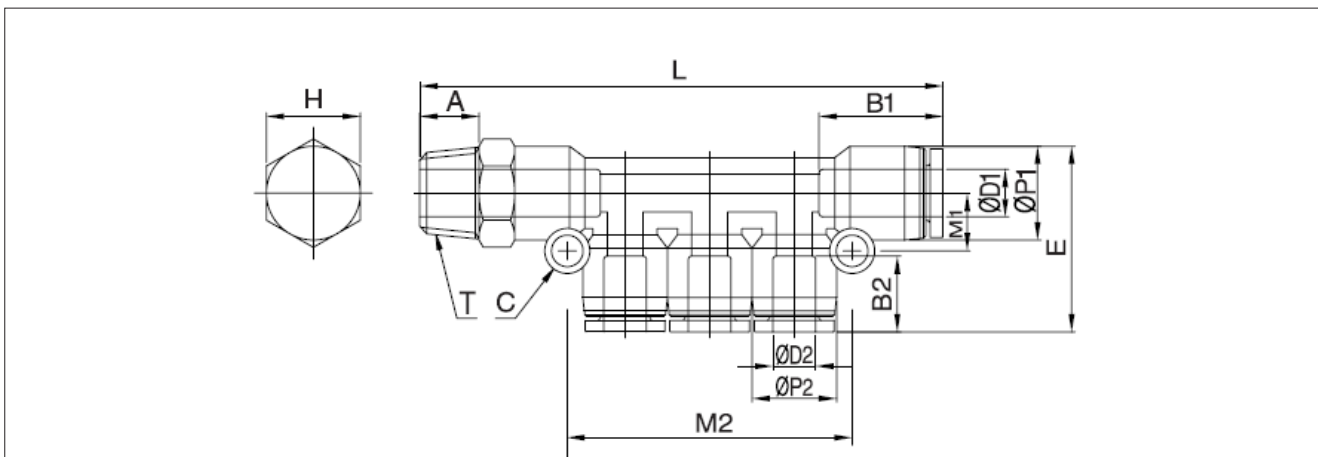
Dimensions (G Thread)



Unit : mm

Model	ØD1	ØD2	ØP1	ØP2	T	L	E	C	A	B1	B2	M1	M2	H (Hex)	Orifice	Weight (g)	Box (EA)
EKDG060401	6	4	12.5	10.5	G 1/8	70.1	24.2	3.3	5.0	17.6	16.3	7.6	34.0	14	3.0	22.1	25
EKDG080401	8	4	14.8	10.5	G 1/8	71.9	28.5	4.3	5.0	18.7	16.3	9.2	34.8	14	3.0	24.1	25
EKDG080402	8	4	14.8	10.5	G 1/4	74.9	28.5	4.3	6.5	18.7	16.3	9.2	34.8	17	3.0	29.1	25
EKDG080601	8	6	14.8	12.5	G 1/8	77.5	34.0	4.3	5.0	18.7	17.6	9.3	41.1	14	4.0	27.8	25
EKDG080602	8	6	14.8	12.5	G 1/4	80.5	34.0	4.3	6.5	18.7	17.6	9.3	41.1	17	4.0	31.8	25
EKDG100602	10	6	17.5	12.5	G 1/4	87.2	34.5	4.3	6.5	19.6	17.6	9.5	41.7	17	4.0	35.3	25
EKDG100603	10	6	17.5	12.5	G 3/8	87.2	34.5	4.3	6.5	19.6	17.6	9.5	41.7	20	4.0	41.3	25
EKDG100802	10	8	17.5	14.8	G 1/4	92.3	34.5	4.3	6.5	19.6	18.7	8.5	47.0	17	6.5	38.3	25
EKDG100803	10	8	17.5	14.8	G 3/8	92.3	34.5	4.3	6.5	19.6	18.7	8.5	47.0	20	6.5	53.3	20

Dimensions (NPT Thread)



Unit : mm

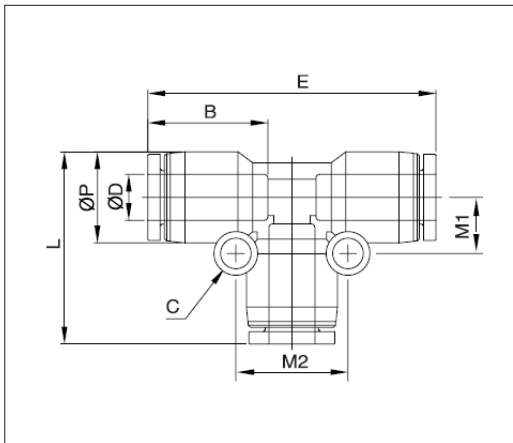
Model	ØD1 (INCH)	ØD2 (INCH)	ØP1	ØP2	T	L	E	C	A	B1	B2	M1	M2	H (Hex)	Orifice	Weight (g)	Box (EA)
EKD3/16 5/32N1	3/16	5/32	11.5	10.5	NPT 1/8	69.8	26.3	3.3	8.5	16.8	16.3	7.6	34.0	7/16	3.2	26.1	25
EKD1/4 5/32N1	1/4	5/32	13.0	10.5	NPT 1/8	71.1	26.6	3.3	8.5	17.4	16.3	8.8	36.0	1/2	3.2	26.1	25
EKD5/16 5/32N2	5/16	5/32	14.5	10.5	NPT 1/4	77.7	28.2	4.3	10.5	18.7	16.3	9.2	34.8	9/16	3.2	31.1	25
EKD5/16 3/16N2	5/16	3/16	14.5	11.5	NPT 1/4	80.9	29.0	4.3	10.5	18.7	16.8	9.3	41.1	9/16	4.0	34.8	25
EKD5/16 1/4N2	5/16	1/4	14.5	13.0	NPT 1/4	84.0	30.0	4.3	10.5	18.7	17.4	9.7	43.5	9/16	5.0	31.8	25
EKD3/8 1/4N3	3/8	1/4	17.5	13.0	NPT 3/8	86.9	32.2	4.3	11.5	20.2	17.4	11.0	43.5	11/16	5.0	58.3	20
EKD3/8 5/16N3	3/8	5/16	17.5	14.5	NPT 3/8	96.3	34.5	4.3	11.5	20.2	18.7	8.5	47.0	11/16	6.6	62.3	20

EUT series



Union Tee

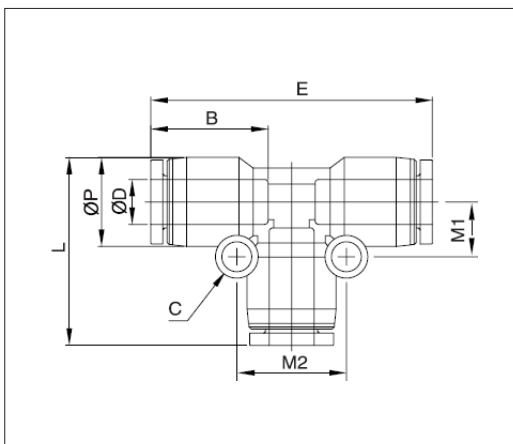
Dimensions (Metric)



Unit : mm

Model	ØD	ØP	L	E	C	B	M1	M2	Orifice	Weight (g)	Box (EA)
EUT04	4	10.5	24.2	36.6	3.3	16.3	6.4	12.8	2.6	9.4	100
EUT06	6	12.5	27.5	41.8	3.3	17.6	7.7	15.4	5.0	10.1	50
EUT08	8	14.8	30.7	44.9	4.3	18.7	8.9	17.8	6.5	12.1	50
EUT10	10	17.5	34.1	48.2	4.3	19.6	10.9	21.8	8.0	15.6	25
EUT12	12	20.5	39.9	56.8	4.3	21.9	12.4	24.8	10.0	26.3	25
EUT16	16	25.5	47.2	68.2	4.3	24.0	15.9	31.8	13.0	52.0	15

Dimensions (Inch)



Unit : mm

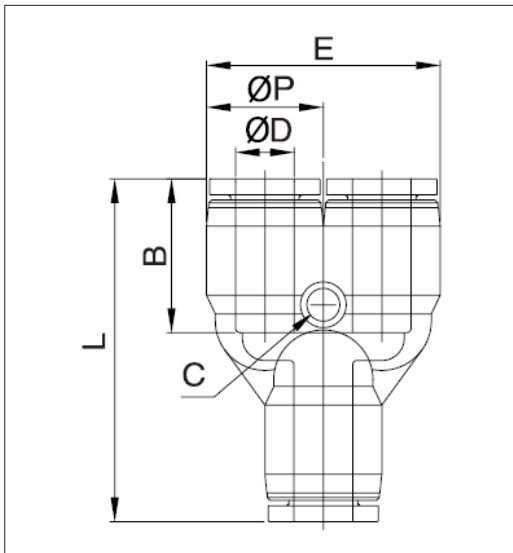
Model	ØD (INCH)	ØP	L	E	C	B	M1	M2	Orifice	Weight (g)	Box (EA)
EUT5/32	5/32	10.5	36.6	24.2	3.3	16.3	6.4	12.8	3.0	6.4	100
EUT3/16	3/16	11.5	39.5	25.5	3.5	16.8	7.5	15.0	3.5	6.1	100
EUT1/4	1/4	13.0	42.6	27.8	3.5	17.4	8.3	16.5	4.8	10.1	50
EUT5/16	5/16	14.5	44.9	30.7	4.3	18.7	8.9	17.8	6.5	13.1	50
EUT3/8	3/8	17.5	51.6	34.6	4.5	20.2	11.0	22.0	8.0	19.6	25
EUT1/2	1/2	21.0	60.5	40.8	4.5	22.0	12.8	25.5	9.0	31.0	25

EUY series



Reducer Y

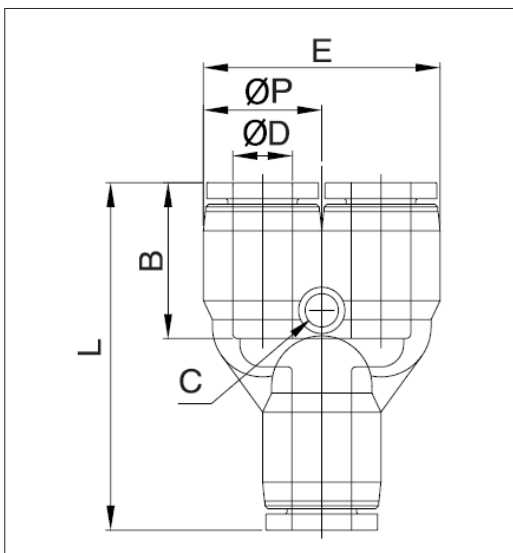
Dimensions (Metric)



Unit : mm

Model	ØD	ØP	L	E	C	B	Orifice	Weight (g)	Box (EA)
EUY04	4	10.5	37.1	21.0	3.3	16.3	3.0	6.4	100
EUY06	6	12.5	40.2	25.0	3.3	17.6	5.2	9.1	100
EUY08	8	14.8	43.4	29.0	4.3	18.7	6.8	12.1	50
EUY10	10	17.5	47.7	35.0	4.3	19.6	8.0	17.6	25
EUY12	12	20.5	53.3	41.0	4.3	21.9	10.3	28.3	25

Dimensions (Inch)



Unit : mm

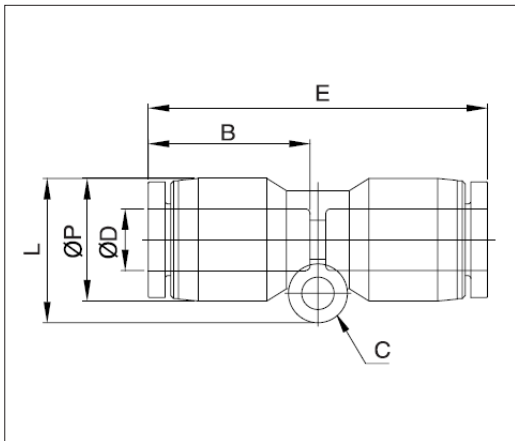
Model	ØD (INCH)	ØP	L	E	C	B	Orifice	Weight (g)	Box (EA)
EUY5/32	5/32	10.5	37.1	21.0	3.3	16.3	2.5	7.4	100
EUY3/16	3/16	11.5	37.1	23.0	3.3	16.8	3.0	7.1	100
EUY1/4	1/4	13.0	39.8	26.0	3.3	17.4	4.0	9.1	50
EUY5/16	5/16	14.5	43.4	29.0	4.3	18.7	6.8	13.1	50
EUY3/8	3/8	17.5	47.7	35.0	4.3	19.6	8.0	19.6	25
EUY1/2	1/2	21.0	54.5	42.0	4.3	22.0	10.3	29.0	25

EUC series



Union Straight

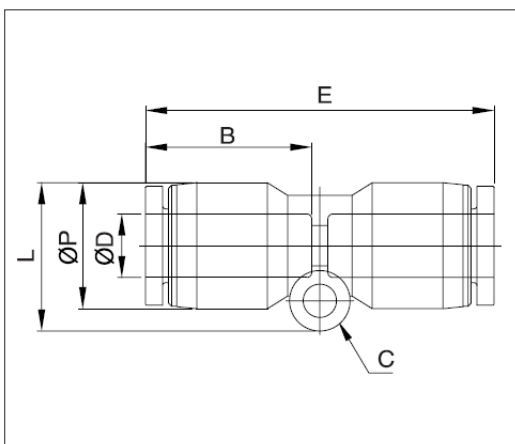
Dimensions (Metric)



Unit : mm

Model	ØD	ØP	L	E	C	B	Orifice	Weight (g)	Box (EA)
EUC04	4	10.5	12.8	34.6	3.3	16.3	3.0	3.6	100
EUC06	6	12.5	14.8	36.8	3.3	17.6	4.0	7.4	100
EUC08	8	14.8	19.9	39.4	4.3	18.7	6.5	8.4	50
EUC10	10	17.5	20.0	43.2	4.3	19.6	8.0	11.4	50
EUC12	12	20.5	23.3	47.8	4.3	21.9	10.0	16.2	25
EUC16	16	25.5	25.5	51.1	-	24.0	13.0	31.0	25

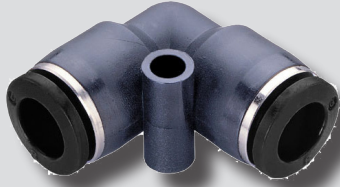
Dimensions (Inch)



Unit : mm

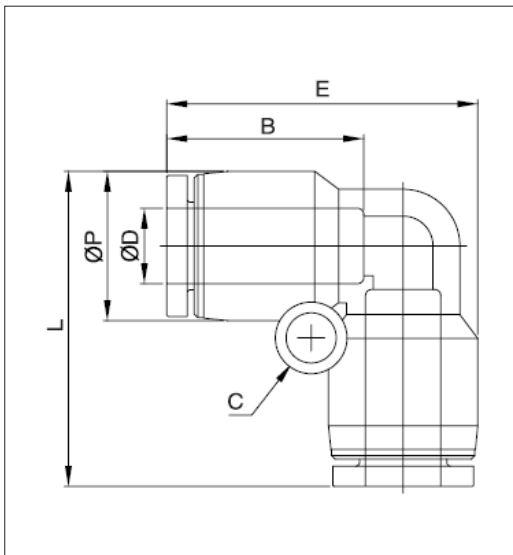
Model	ØD (INCH)	ØP	L	E	C	B	Orifice	Weight (g)	Box (EA)
EUC5/32	5/32	10.5	12.8	34.6	3.3	16.3	3.0	3.6	100
EUC3/16	3/16	11.5	15.1	35.5	3.5	16.8	3.5	3.4	100
EUC1/4	1/4	13.0	16.3	36.8	3.5	17.4	4.8	6.4	100
EUC5/16	5/16	14.5	19.9	39.4	4.3	18.7	6.5	8.4	50
EUC3/8	3/8	17.5	21.5	42.6	4.5	20.2	8.0	13.4	50
EUC1/2	1/2	21.0	24.5	48.9	4.5	22.0	9.0	19.0	25

EUL series



Union Elbow

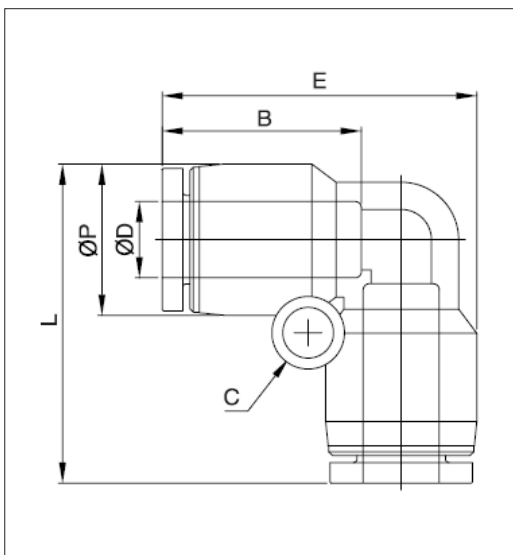
Dimensions (Metric)



Unit : mm

Model	ØD	ØP	L	E	C	B	Orifice	Weight (g)	Box (EA)
EUL04	4	10.5	24.2	24.2	3.3	16.3	3.0	4.6	100
EUL06	6	12.5	27.5	27.5	3.3	17.6	5.0	5.4	100
EUL08	8	14.8	30.7	30.7	4.3	18.7	7.0	8.4	50
EUL10	10	17.5	34.1	34.1	4.3	19.6	8.0	11.4	50
EUL12	12	20.5	39.9	39.9	4.3	21.9	10.0	19.2	25
EUL16	16	25.5	46.7	46.7	4.3	24.0	13.0	38.0	20

Dimensions (Inch)



Unit : mm

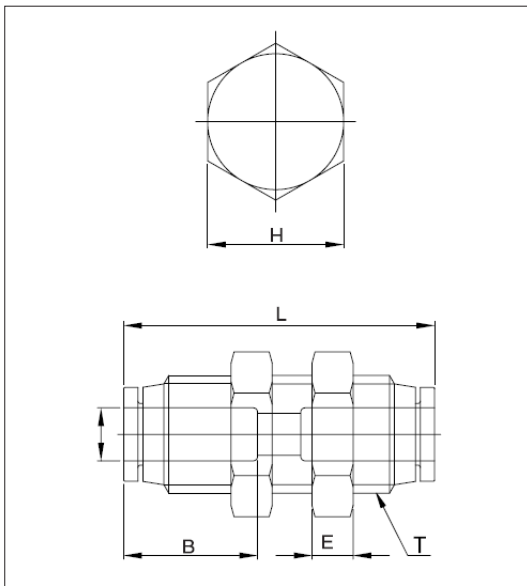
Model	ØD (INCH)	ØP	L	E	C	B	Orifice	Weight (g)	Box (EA)
EUL5/32	5/32	10.5	24.2	24.2	3.3	16.3	3.0	4.6	100
EUL3/16	3/16	11.5	25.5	25.5	3.5	16.8	3.5	4.4	100
EUL1/4	1/4	13.0	27.8	27.8	3.5	17.4	4.8	7.4	100
EUL5/16	5/16	14.5	30.7	30.7	4.3	18.7	7.0	9.4	50
EUL3/8	3/8	17.5	34.6	34.6	4.5	20.2	8.0	14.4	25
EUL1/2	1/2	21.0	40.8	40.8	4.5	22.0	9.0	22.0	20

EPC series



Bulkhead Union

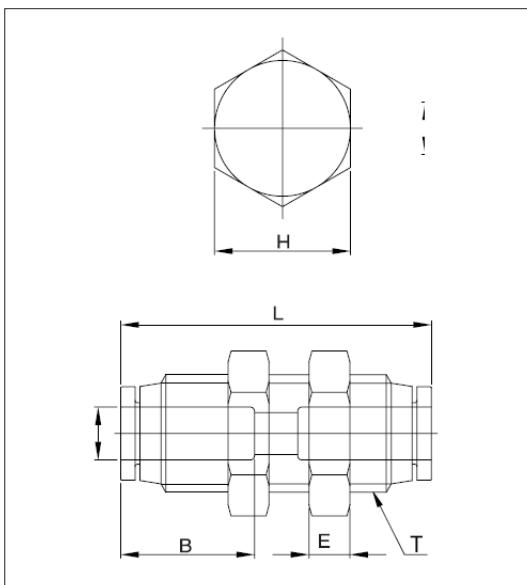
Dimensions (R(PT) Thread)



Unit : mm

Model	ØD	T	L	E	B	H (Hex)	Orifice	Weight (g)	Box (EA)
EPC04	4	M12X1.0	35.5	4	16.3	14	3.0	19.6	100
EPC06	6	M14X1.0	39.9	4	17.6	17	5.0	28.6	100
EPC08	8	M16X1.0	42.2	5	18.7	19	7.0	36.4	50
EPC10	10	M20X1.0	45.0	5	19.6	24	9.0	65.0	25
EPC12	12	M22X1.0	50.3	5	21.9	26	11.0	79.6	25

Dimensions (NPT Thread)



Unit : mm

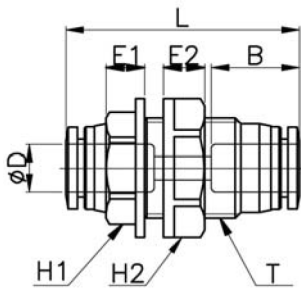
Model	ØD (INCH)	T	L	E	B	H (Hex)	Orifice	Weight (g)	Box (EA)
EPC5/32	5/32	M12X1.0	35.5	4	16.8	14	3.0	19.6	100
EPC3/16	3/16	M14X1.0	36.5	4	16.8	17	4.0	19.6	100
EPC1/4	1/4	M14X1.0	38.8	4	17.4	17	5.0	29.6	100
EPC5/16	5/16	M16X1.0	42.2	5	18.7	19	7.0	36.4	50
EPC3/8	3/8	M20X1.0	43.2	5	20.2	24	8.0	59.8	25
EPC1/2	1/2	M22X1.0	49.5	5	22.0	26	11.0	83.2	25

EMP series



Light Bulkhead Union

Dimensions (R(PT) Thread)



Unit : mm

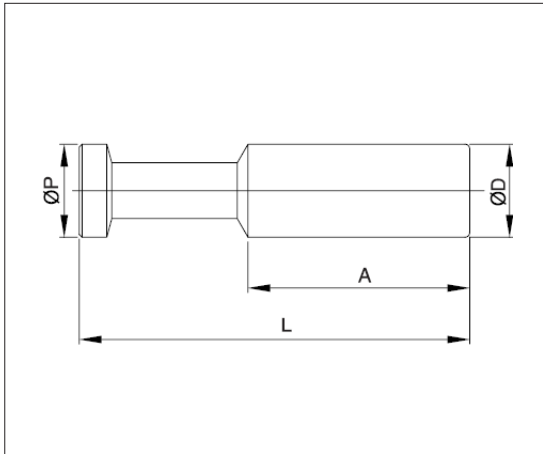
Model	ØD	T	L	E1	E2	B	H1 (Hex)	H2 (Hex)	Orifice	Weight (g)	Box (EA)
EMP04	4	M12X1.25	32.4	6.0	6.0	15.0	13	16	3.0	5.4	100
EMP06	6	M15X1.5	36.1	6.0	6.5	16.5	15	18	5.0	7.8	100
EMP08	8	M17X1.5	39.7	6.5	7.0	18.8	17	21	6.8	10.8	50
EMP10	10	M20X1.75	44.0	7.3	8.0	20.1	21	25	8.0	16.8	25
EMP12	12	M24X1.75	47.6	7.3	8.5	22.9	24	28	10.0	24.5	25

EBC series



Plug

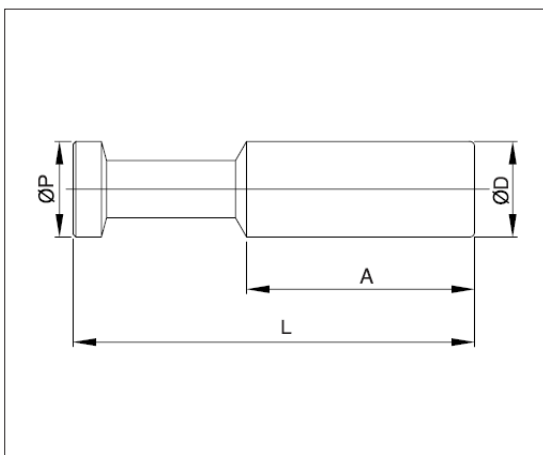
Dimensions (Metric)



Unit : mm

Model	ØD	ØP	L	A	Weight (g)	Box (EA)
EBC04	4	4	30.0	17.7	1.0	100
EBC06	6	6	34.0	19.4	1.0	100
EBC08	8	8	38.0	21.2	1.0	100
EBC10	10	10	42.0	23.8	2.0	100
EBC12	12	12	46.0	29.5	3.0	100
EBC16	16	16	50.0	30.0	12.0	50

Dimensions (Inch)



Unit : mm

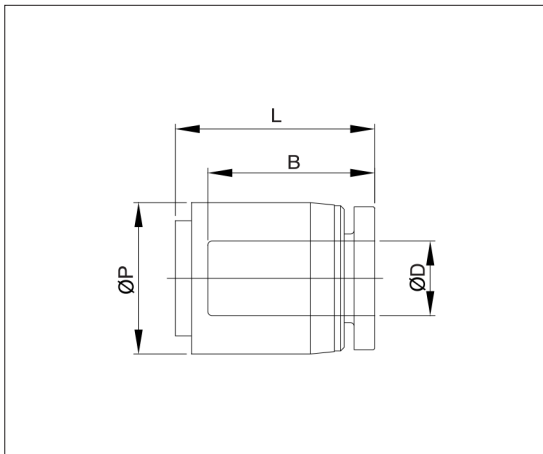
Model	ØD (INCH)	ØP (INCH)	L	A	Weight (g)	Box (EA)
EBC5/32	5/32	5/32	30.0	18.0	1.0	100
EBC3/16	3/16	3/16	33.0	19.0	1.0	100
EBC1/4	1/4	1/4	34.0	20.0	1.0	100
EBC5/16	5/16	5/16	38.0	22.0	1.0	100
EBC3/8	3/8	3/8	42.0	25.0	2.0	100
EBC1/2	1/2	1/2	46.0	28.0	3.0	50

EPF series



Tube Plug

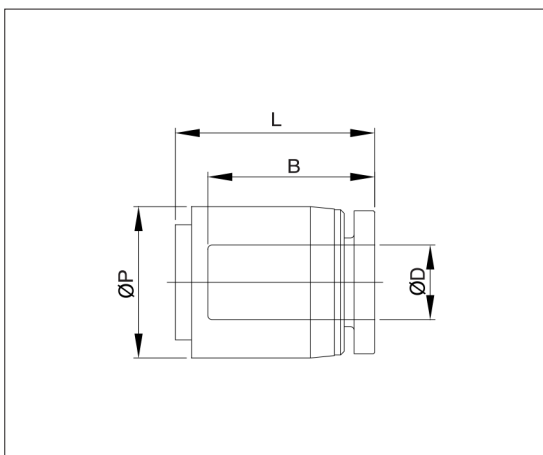
Dimensions (Metric)



Unit : mm

Model	ØD	ØP	L	B	Weight (g)	Box (EA)
EPF04	4	10.5	18.0	16.8	2.8	100
EPF06	6	12.5	19.0	17.6	3.8	100
EPF08	8	14.5	21.0	18.7	3.7	100
EPF10	10	17.5	23.0	19.6	5.5	100
EPF12	12	20.5	25.0	21.9	9.3	50
EPF16	16	25.5	27.5	24.0	17.0	50

Dimensions (Inch)



Unit : mm

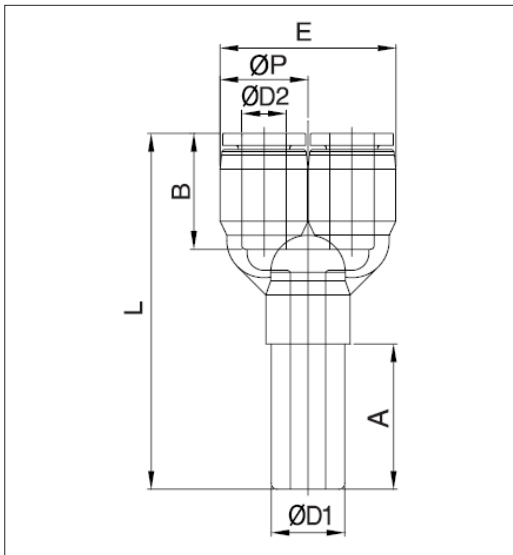
Model	ØD (INCH)	ØP	L	B	Weight (g)	Box (EA)
EPF5/32	5/32	10.5	18.9	16.3	2.0	100
EPF3/16	3/16	11.5	18.8	16.8	2.0	100
EPF1/4	1/4	13.0	19.9	17.4	3.0	100
EPF5/16	5/16	14.5	21.5	18.7	4.0	100
EPF3/8	3/8	17.5	22.8	20.2	7.0	100
EPF1/2	1/2	21.0	26.0	22.0	10.0	50

EYA series



Plug-In Y

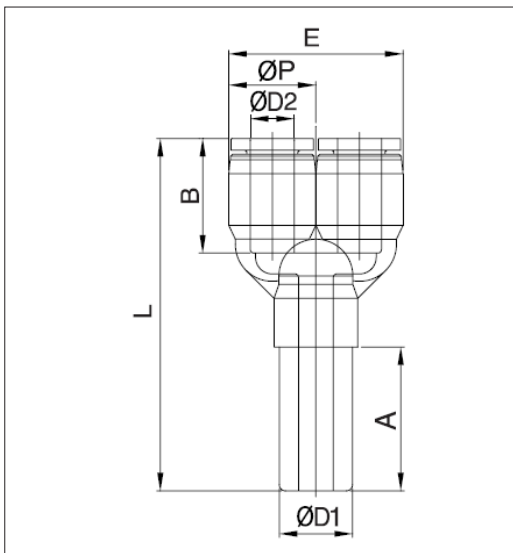
Dimensions (Metric)



Unit: mm

Model	ØD1	ØD2	ØP	L	E	A	B	Orifice	Weight (g)	Box (EA)
EYA04	4	4	10.5	49.5	21.0	22.0	16.8	2.6	6.6	100
EYA06	6	6	12.5	54.7	25.0	24.0	17.6	4.0	8.4	50
EYA08	8	8	14.5	59.8	29.0	26.0	18.7	5.6	12.4	50
EYA10	10	10	17.5	66.1	35.0	28.0	19.6	7.0	18.4	25
EYA12	12	12	20.5	71.6	41.0	30.0	21.9	9.0	24.2	25

Dimensions (Inch)



Unit: mm

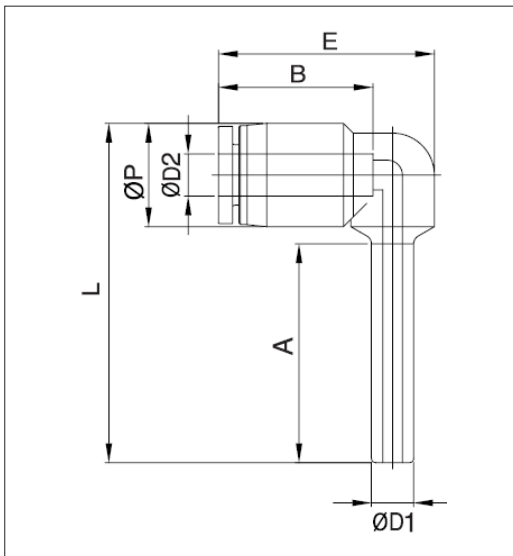
Model	ØD1 (INCH)	ØD2 (INCH)	ØP	L	E	A	B	Orifice	Weight (g)	Box (EA)
EYA5/32	5/32	5/32	10.5	54.2	21.0	24.0	16.3	2.6	9.6	100
EYA3/16	3/16	3/16	11.5	57.9	23.0	24.0	16.8	2.6	9.4	100
EYA1/4	1/4	1/4	13.0	60.9	29.0	25.0	17.4	4.0	14.4	50
EYA5/16	5/16	5/16	14.5	60.5	29.0	26.0	18.7	5.6	22.4	50
EYA3/8	3/8	3/8	17.5	68.5	35.0	28.0	20.2	7.0	38.4	25
EYA1/2	1/2	1/2	21.0	80.6	41.0	30.0	22.0	7.0	48.0	20

EAL series



Plug-In Elbow

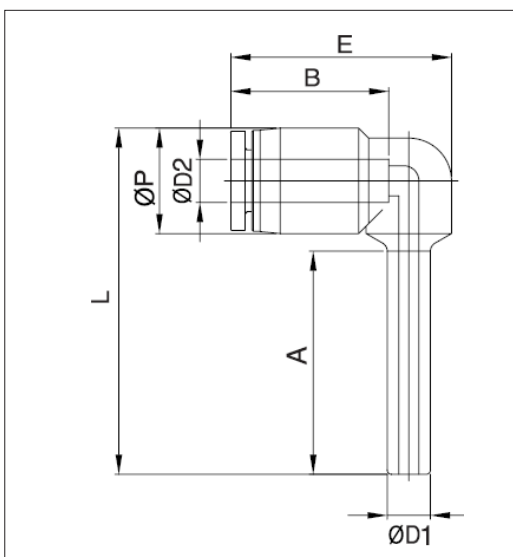
Dimensions (Metric)



Unit : mm

Model	ØD1	ØD2	ØP	L	E	A	B	Orifice	Weight (g)	Box (EA)
EAL04	4	4	10.5	28.4	18.8	22.0	16.3	2.0	2.8	100
EAL06	6	6	12.5	31.4	20.3	24.0	17.6	4.0	4.7	50
EAL08	8	8	14.8	34.3	23.0	26.0	18.7	6.0	5.7	50
EAL10	10	10	17.5	37.9	24.2	28.0	19.6	7.0	8.2	50
EAL12	12	12	20.5	41.4	28.0	30.0	21.9	9.0	13.1	25
EAL16	16	16	25.5	48.5	32.0	35.0	24.0	12.0	34.0	20

Dimensions (Inch)



Unit : mm

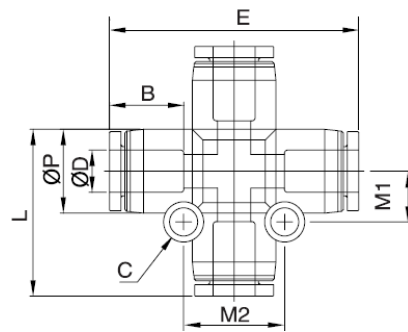
Model	ØD1 (INCH)	ØD2 (INCH)	ØP	L	E	A	B	Orifice	Weight (g)	Box (EA)
EAL5/32	5/32	5/32	10.5	33.7	18.7	22.0	16.7	2.0	4.8	100
EAL3/16	3/16	3/16	11.5	43.3	19.2	24.0	16.9	2.6	4.7	50
EAL1/4	1/4	1/4	13.0	47.5	20.5	25.0	17.4	4.2	6.7	50
EAL5/16	5/16	5/16	14.5	41.5	23.1	26.0	19.1	6.0	7.7	50
EAL3/8	3/8	3/8	17.5	54.6	23.8	28.0	19.8	7.0	14.2	50
EAL1/2	1/2	1/2	21.0	62.0	28.3	30.0	23.0	9.0	19.0	25

EZA series



Union Cross

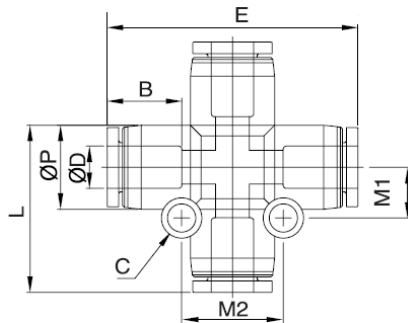
Dimensions (Metric)



Unit : mm

Model	ØD	ØP	L	E	C	B	M1	M2	Orifice	Weight (g)	Box (EA)
EZA04	4	10.5	37.9	36.6	3.3	16.8	6.4	12.8	2.6	8.2	50
EZA06	6	12.5	42.5	41.8	4.3	17.6	7.5	14.9	4.5	10.8	50
EZA08	8	14.8	46.8	44.9	4.3	18.7	9.1	18.2	6.0	15.8	25
EZA10	10	17.5	50.5	48.2	4.3	19.6	10.2	20.3	7.4	20.8	25
EZA12	12	20.5	57.2	54.8	4.3	21.9	11.9	23.7	9.0	33.4	20

Dimensions (Inch)



Unit : mm

Model	ØD (INCH)	ØP	L	E	C	B	M1	M2	Orifice	Weight (g)	Box (EA)
EZA5/32	5/32	10.5	37.9	36.6	3.3	16.3	6.4	12.8	2.6	8.2	50
EZA3/16	3/16	11.5	39.2	39.2	3.3	16.8	7.5	15.0	3.5	7.8	50
EZA1/4	1/4	13.0	42.6	42.6	3.3	17.4	8.3	16.5	5.0	10.8	50
EZA5/16	5/16	14.5	46.8	44.9	4.3	18.7	9.1	18.2	6.0	15.8	25
EZA3/8	3/8	17.5	50.5	48.2	4.3	20.2	10.2	20.3	7.0	26.8	25
EZA1/2	1/2	21.0	60.5	60.5	4.3	22.0	12.8	25.5	9.0	37.0	20