

SCP series



How to Order

SCP ① ② - ③ 08

① Series

SCP	Speed controller and residual pressure release valve
-----	--

② Connection type

01	R(PT) 1/8
02	R(PT) 1/4
03	R(PT) 3/8
04	R(PT) 1/2

③ Tube outer diameter

04	Ø4
06	Ø6
08	Ø8
10	Ø10
12	Ø12

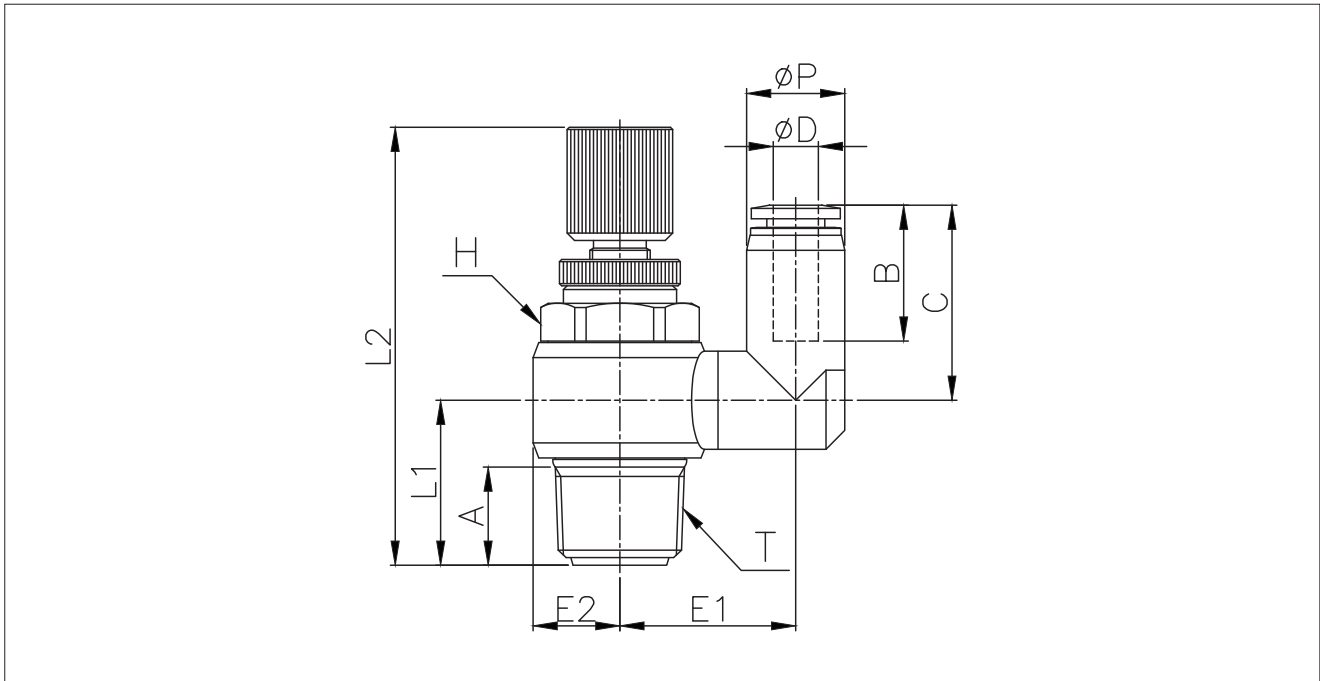
Specifications

Fluid	Compressed air
Working pressure	0~9.9kgf/cm ² (0~0.99MPa)
Negative pressure	-29.5in Hg / -750mmHg(-750Torr)
Temperature range	0~60℃

Features

- Valve speed control and residual pressure discharge.
- Efficient flow control.
- Constant speed control.

Dimensions



Unit: mm

Model	ØD	ØP	T	L1	L2		E1	E2	A	B	H (HEX)	C	Weight (g)
					Min	Max							
SCP 01-04	4	10.5	R(PT) 1/8	15.1	52.4	57.6	14.3	7.0	8.2	14.8	11	20.3	28.5
SCP 02-04			R(PT) 1/4	18.4	51.3	57.1	17.8	9.2	11.0		15	20.3	40.3
SCP 01-06	6	12.5	R(PT) 1/8	15.6	52.4	57.6	15.0	7.0	8.2	16.4	11	24.0	29.9
SCP 02-06			R(PT) 1/4	18.4	51.3	57.1	20.3	9.2	11.0		15	25.9	42.8
SCP 03-06			R(PT) 3/8	21.9	57.0	64.4	23.3	11.5	12.2		19	25.9	65.9
SCP 01-08	8	14.8	R(PT) 1/8	15.6	52.4	57.6	16.2	7.0	8.2	18.3	11	24.9	30.9
SCP 02-08			R(PT) 1/4	18.4	51.3	57.1	19.3	9.2	11.0		15	28.3	43.9
SCP 03-08			R(PT) 3/8	22.4	57.0	64.4	24.6	11.5	12.2		19	29.3	67.0
SCP 04-08			R(PT) 1/2	26.6	63.4	70.6	26.6	14.3	16.5		24	29.3	104.8
SCP 02-10	10	17.5	R(PT) 1/4	18.4	51.3	57.1	20.3	9.2	11.0	20.2	15	30.7	44.1
SCP 03-10			R(PT) 3/8	22.4	57.0	64.4	24.6	11.5	12.2		19	31.7	68.8
SCP 04-10			R(PT) 1/2	26.7	63.4	70.6	26.7	14.3	16.5		24	33.1	108.0
SCP 02-12	12	20.5	R(PT) 1/4	18.4	51.3	57.1	21.8	9.2	11.0	22.9	15	33.4	46.0
SCP 03-12			R(PT) 3/8	22.4	57.0	64.4	24.6	11.5	12.2		19	34.4	75.1
SCP 04-12			R(PT) 1/2	26.7	63.4	70.6	26.7	14.3	16.5		24	35.8	110.8