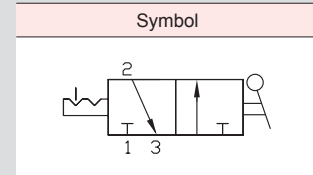
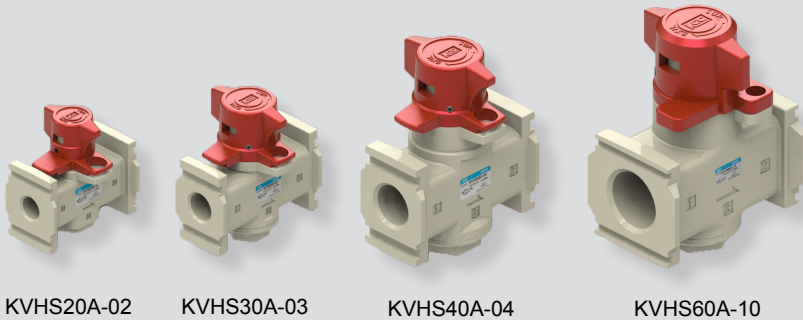


KVHS-A series



How to Order

KVHS 30 A - 02 -

① ② ③ ④

① Port type

Nil	Rc(PT) (Standard)
G	G
N	NPT

② Body nominal size

20	1/8", Body size 1/4"
30	1/4", Body size 3/8"
40	3/8", Body size 1/2"
60	3/4", Body size 1"

③ Port size

		Body nominal size			
		20	30	40	60
01	1/8"	•			
02	1/4"	•	•		
03	3/8"		•	•	
04	1/2"			•	
06	3/4"				•
10	1"				•

④ Locking hole

Nil	1 (EXH)
2	2 (EXH/SUP)

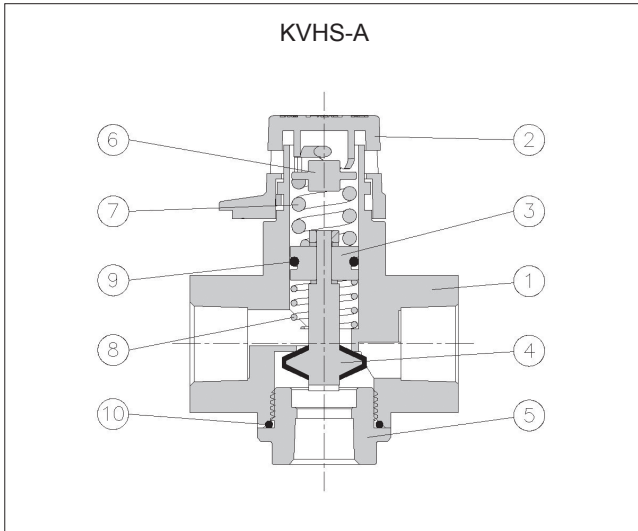
Specifications

Type		KVHS20A		KVHS30A		KVHS40A		KVHS60A	
Fluid		Compressed air							
Port size	IN, OUT	Rc(PT)1/8 G1/8	Rc(PT)1/4 G1/4	Rc(PT)1/4 G1/4	Rc(PT)3/8 G3/8	Rc(PT)3/8 G3/8	Rc(PT)1/2 G1/2	Rc(PT)3/4 G3/4	Rc(PT)1 G1
	EXH	Rc(PT)1/8, G1/8		Rc(PT)1/4, G1/4		Rc(PT)3/8, G3/8		Rc(PT)1/2, G1/2	
Effective sectional area S _{min} (Cv)	IN→OUT	10 (0.55)	12 (0.66)	20 (1.10)	35 (1.93)	40 (2.20)	56 (3.08)	85 (4.68)	90 (4.95)
	OUT→EXH	11 (0.61)	14 (0.77)	20 (1.10)	35 (1.93)	42 (2.31)	60 (3.30)	90 (4.95)	95 (5.22)
Operating pressure		0~0.9MPa							
Proof pressure		1.5MPa							
Ambient & fluid temperature		0~60℃							
Handle switching angle		90°							
Weight		150g		290g		350g		860g	

Features

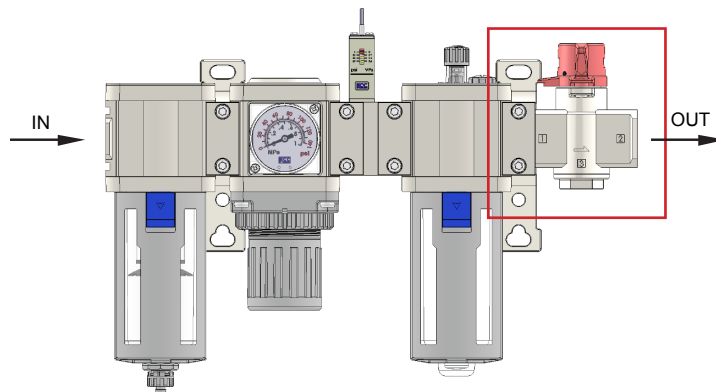
- Easy operating manual switching valve
- For preventing accidental start-up, using locking-hole

Structure

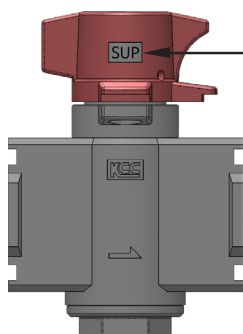


Part no.	Parts	Material			
		20	30	40	60
1	BODY	Zn D/C	AL D/C		
2	HANDLE	Zn D/C			
3	PISTON	Brass			
4	SPOOL	Brass + NBR			
5	COVER	AL			
6	SPRING HOLDER	METAL			
7	SPRING	Hard Steel Wire			
8	SPOOL SPRING	SUS			
9	PISTON O-RING	NBR			
10	COVER O-RING	NBR			

How to Use

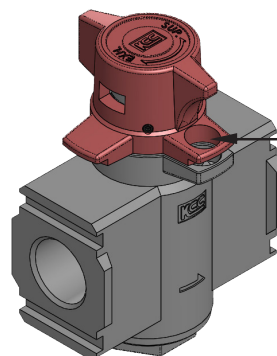


※ Residual pressure exhaust valve is basically intalled at the exhaust port as shown in the figure above.



The supply or exhaust status of the air flow can be verified at a glance in the indicating window.

SUP : Supply
EXH : Exhaust



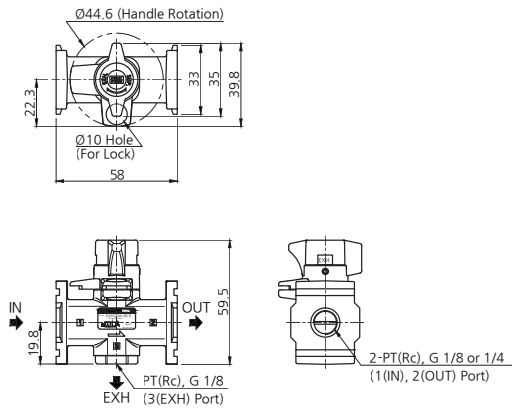
When in the exhaust position, the valve may be padlock secured to prevents accidental start-ups.

⚠ Precautions

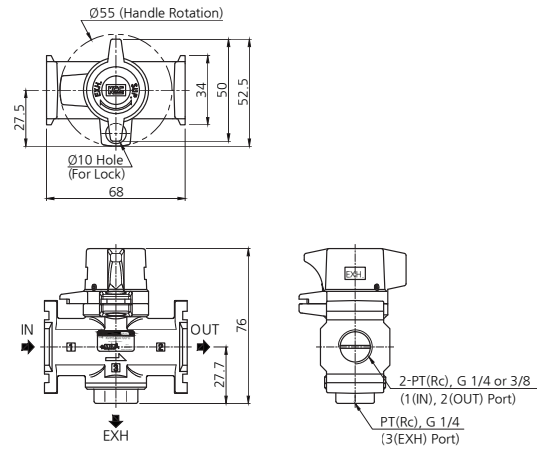
1. Port 1 is inlet port, port 2 is outlet port, and port 3 is exhaust port.
(Only port 1 is pressurizable. Check the connection before operation as misconnection of port may cause malfunction.)
2. The valve must be switched to each position instantly and securely. Stopping the knob between the extreme positions may cause malfunction.
3. Do not remove the mounting screws from the knob.

Dimension

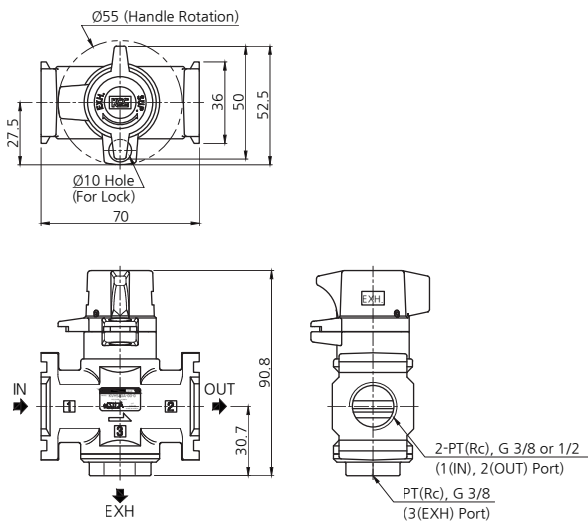
KVHS20A - 01 (02)



KVHS30A - 02 (03)



KVHS40A - 03 (04)



KVHS60A - 06 (10)

