

KDHR series



Features

- Specially designed heat exchanger eliminated minute moisture in the high temperature and high humidity compressed air through rapid cooling cycle.
- Easy disassembling case serve for easy A/S and maintenance.

How to Order

KDHR - 5

① ②

① Series

KDHR	Air cooled type refrigerated air dryer
------	----------------------------------------

② Size

5, 7, 10, 15, 20, 30, 50, 75, 100, 150, 200, 250, 300, 400, 500, 600, 800

Specifications

Model	Flow Capacity(Nm ³ /min)		Connection Rc(PT)	Freon Gas	Electrical Power			Dimensions (mm)			Weight (kg)
	60Hz	50Hz			V	A	KW	Width	Length	Height	
KDHR-5	0.62	0.51	3/4" (S)	R-134a	AC 1Ph 220V 60Hz	1.14	0.2	310	570	590	40
KDHR-7	0.97	0.81	3/4" (S)			1.14	0.2	310	570	590	40
KDHR-10	1.35	1.12	3/4" (S)			2.5	0.4	310	570	590	40
KDHR-15	1.96	1.63	3/4" (S)			3.5	0.8	310	670	560	45
KDHR-20	2.6	2.2	1" (S)			6.1	0.9	320	695	655	84
KDHR-30	3.9	3.2	1" (S)			5.1	0.9	320	695	655	86
KDHR-50	7.2	6.0	2" (S)			6	1.0	410	1,015	885	117
KDHR-75	11.1	9.2	2" (S)			10	1.9	410	1,015	885	170
KDHR-100	14.6	12.1	2" (S)			12.5	2.8	410	1,030	975	196
KDHR-150	21.9	18.2	3" (F)			R22	AC 3Ph 220V/380V /440V 60Hz	12.2	3.8	495	1,595
KDHR-200	31.3	26.0	3" (F)	17.0	5.2			495	1,595	1,440	380
KDHR-250	40.1	33.3	4" (F)	17.0	5.2			650	1,800	1,420	468
KDHR-300	47.6	39.5	4" (F)	17.0	5.2			650	1,800	1,420	660
KDHR-400	59.5	49.4	4" (F)	26.5	5.6			650	1,800	1,420	790
KDHR-500	73.9	61.3	6" (F)	16	12.2			2,500	1,250	2,175	1,560
KDHR-600	89.6	74.4	6" (F)	17	12.2			2,500	1,250	2,175	1,700
KDHR-800	112.5	93.4	8" (F)	21	13.8			2,500	1,250	2,300	1,780

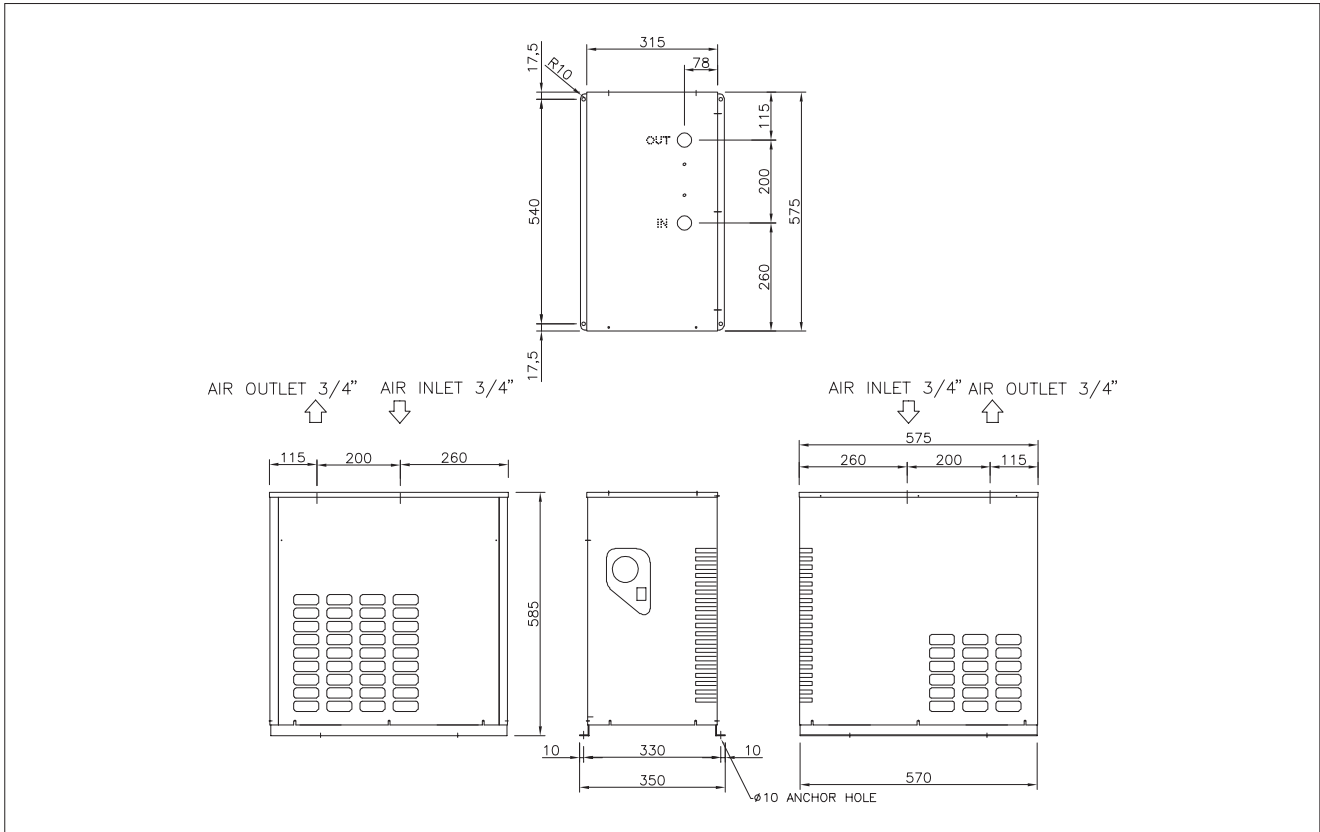
※ In/Out Connection : (S) Screw, (F) Flange

※ KDHR-150 and the model after it has passed the design and performance testing by Korea Occupational Safety and Health Agency (KOSHA)
(Heat exchanger diameter: more than 6 inch)

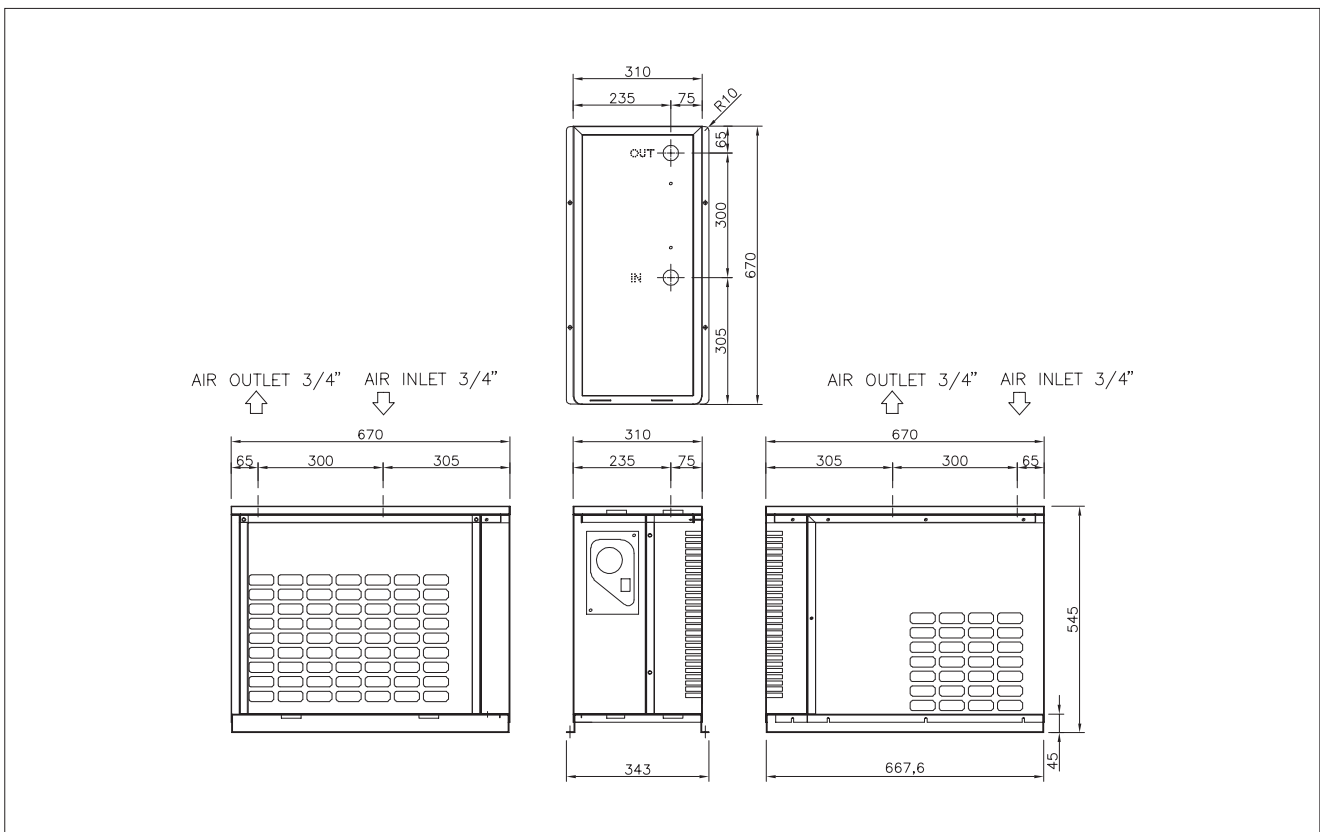
Dew Point	Operating Pressure	Fluid	Inlet Temperature	Ambient Temperature	Condenser
1.7℃~4℃	7.0kg/cm ² (0.7MPa) Max:9.9kg/cm ² (0.99MPa)	Compressed Air	40℃	1.7℃~40℃	Air Cooled type

※ Coefficient of air flow capacity: inlet pressure 7.0kgf/cm²(0.7MPa), inlet air temperature 40℃, ambient temperature 38℃, operating dew point 4℃/10℃

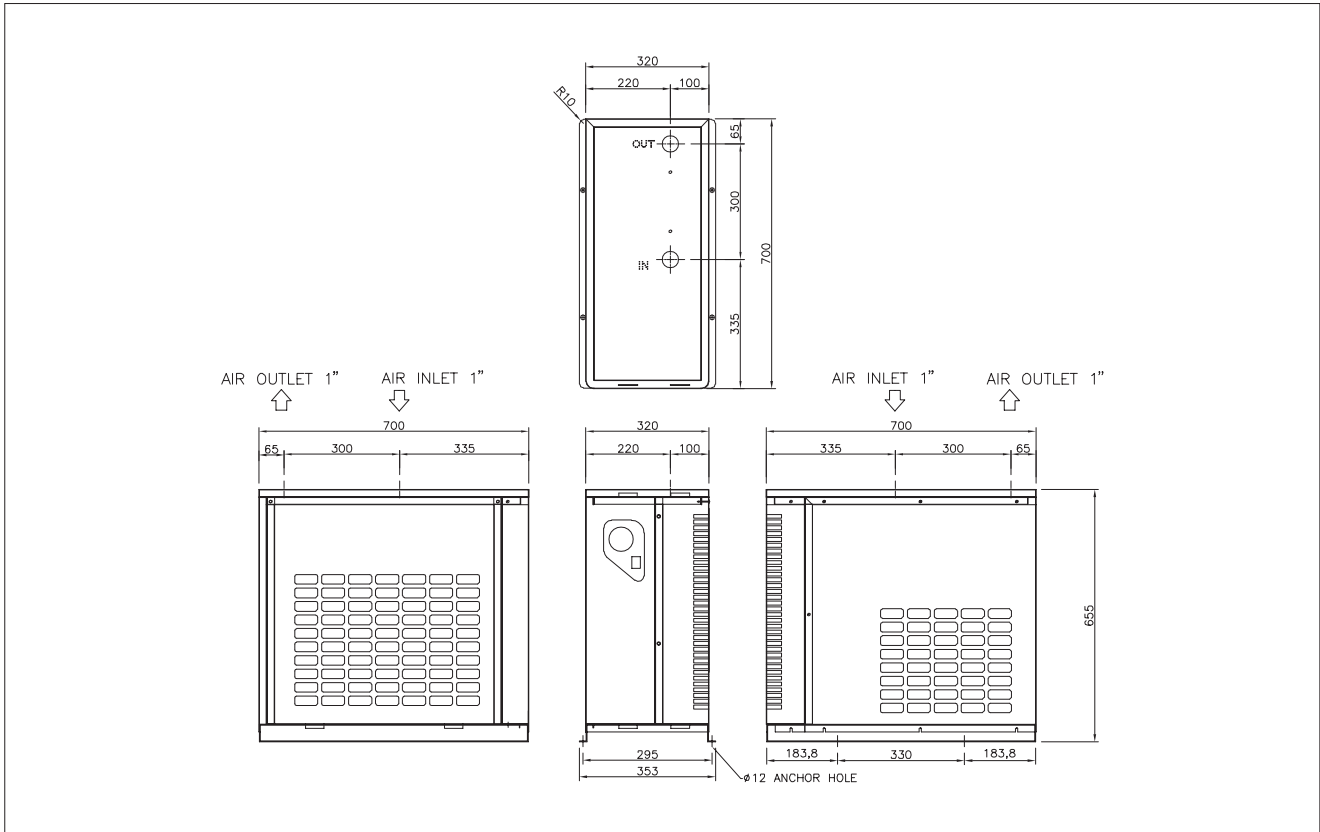
Dimensions (KDHR 05, 07, 10)



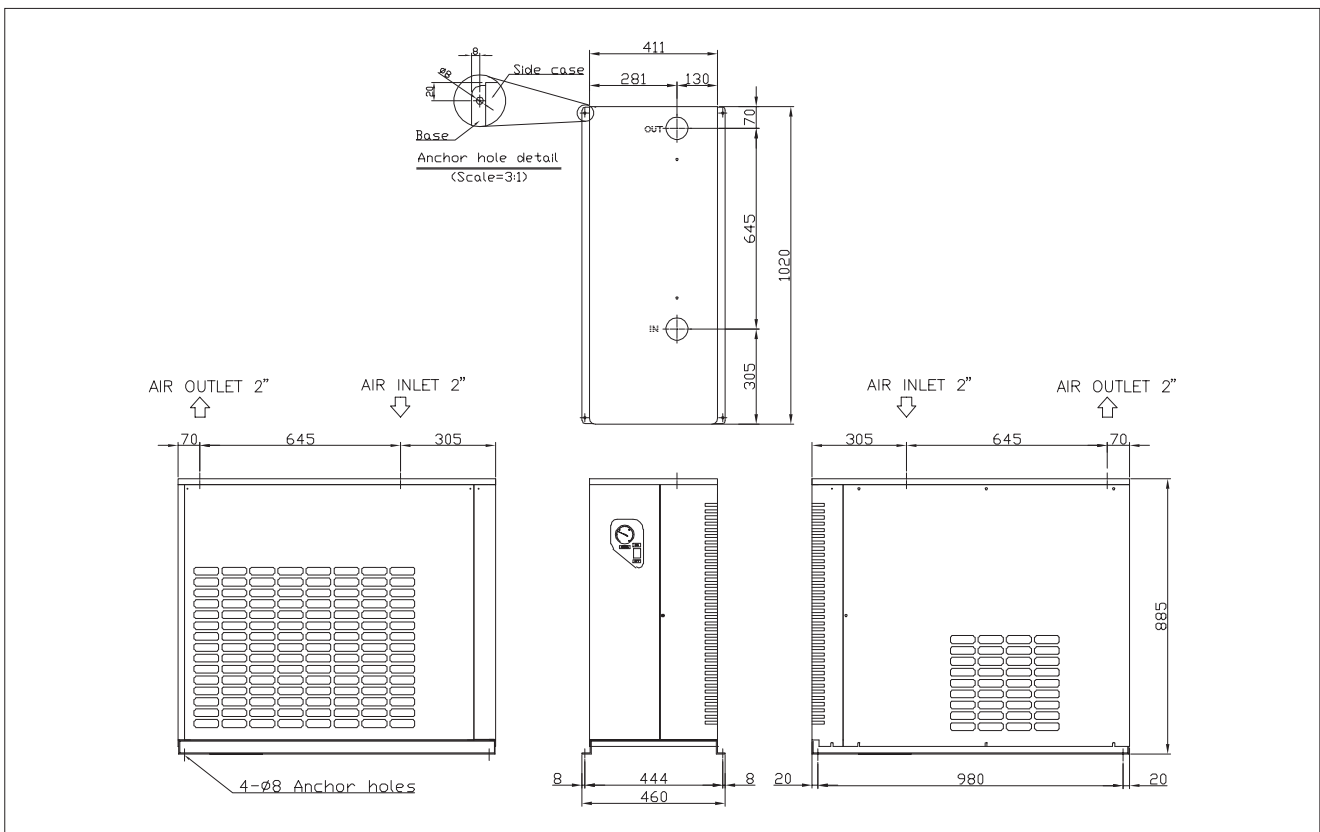
Dimensions (KDHR 15)



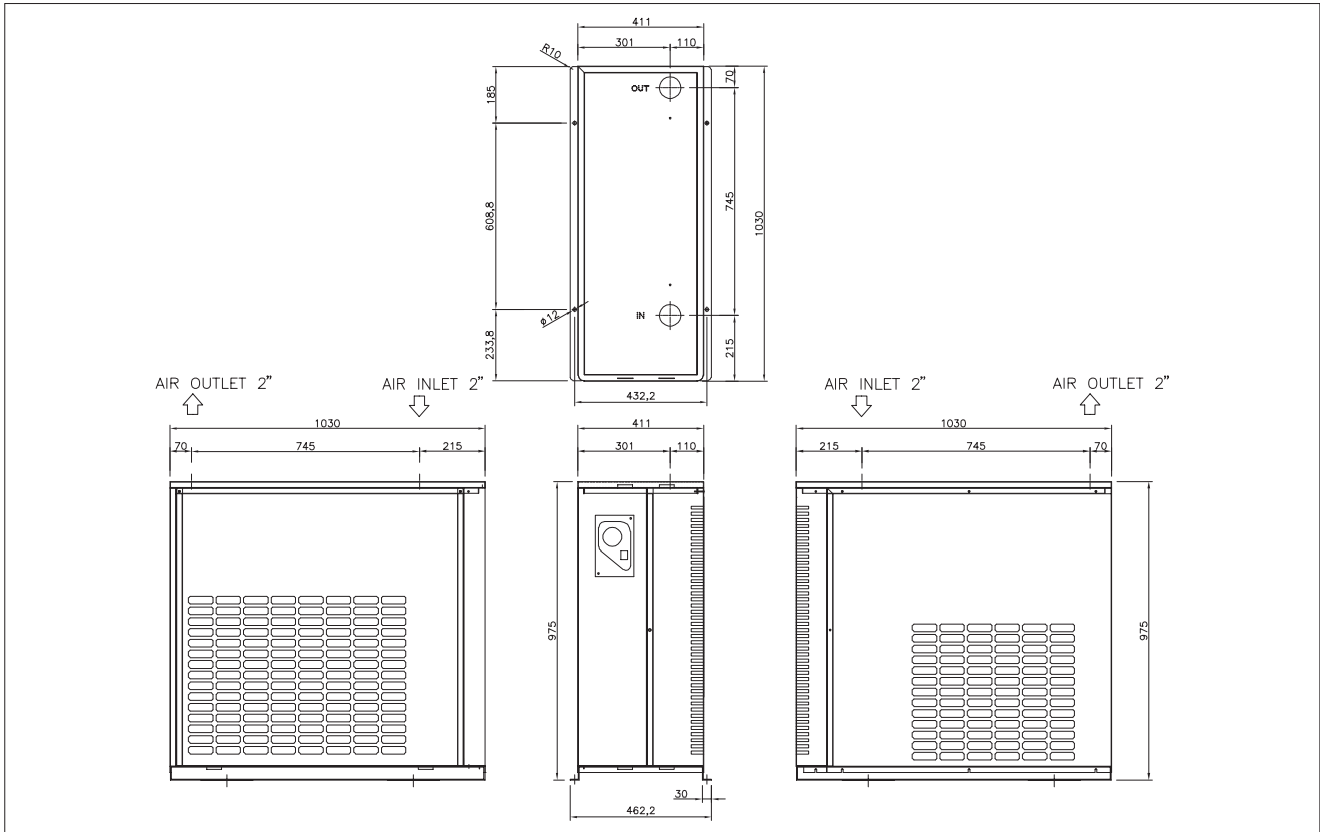
Dimensions (KDHR 20, 30)



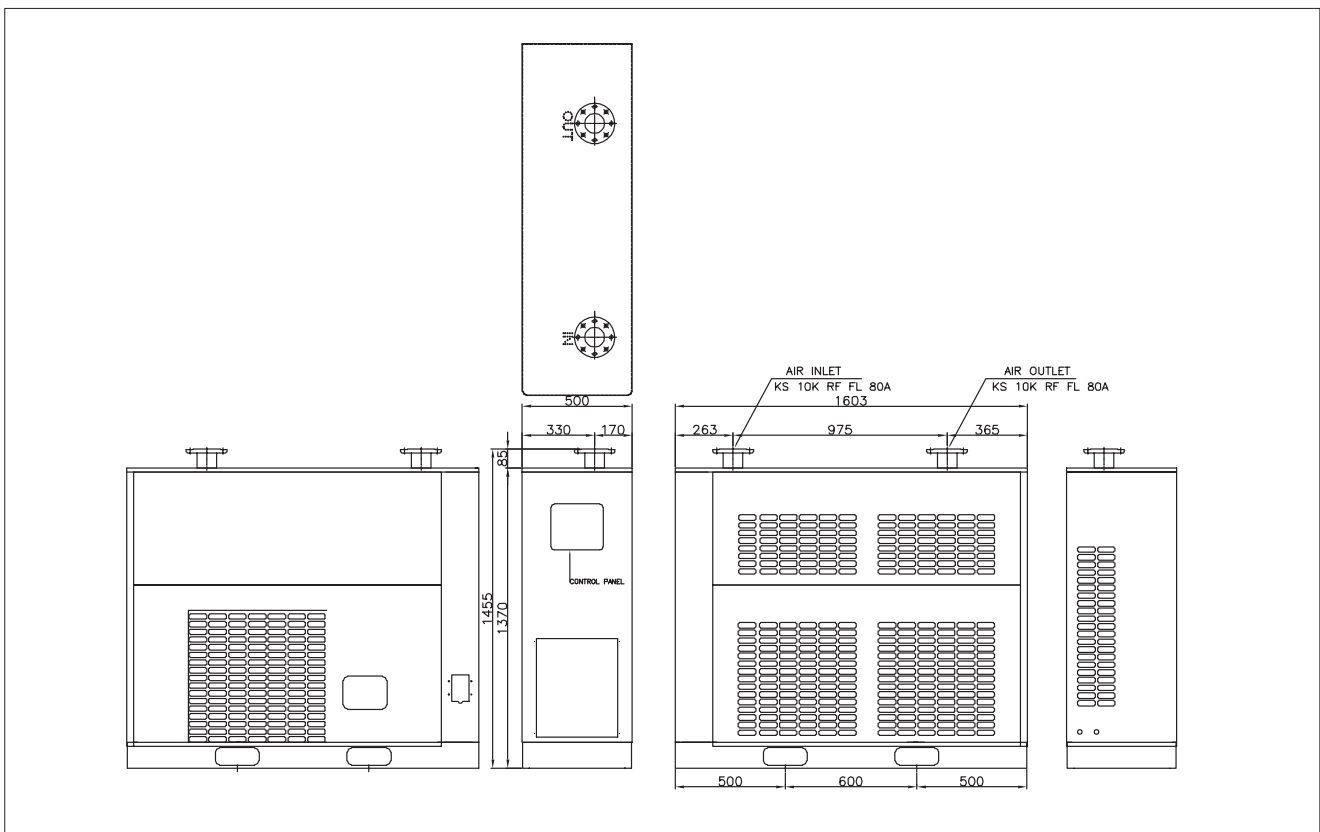
Dimensions (KDHR 50, 75)



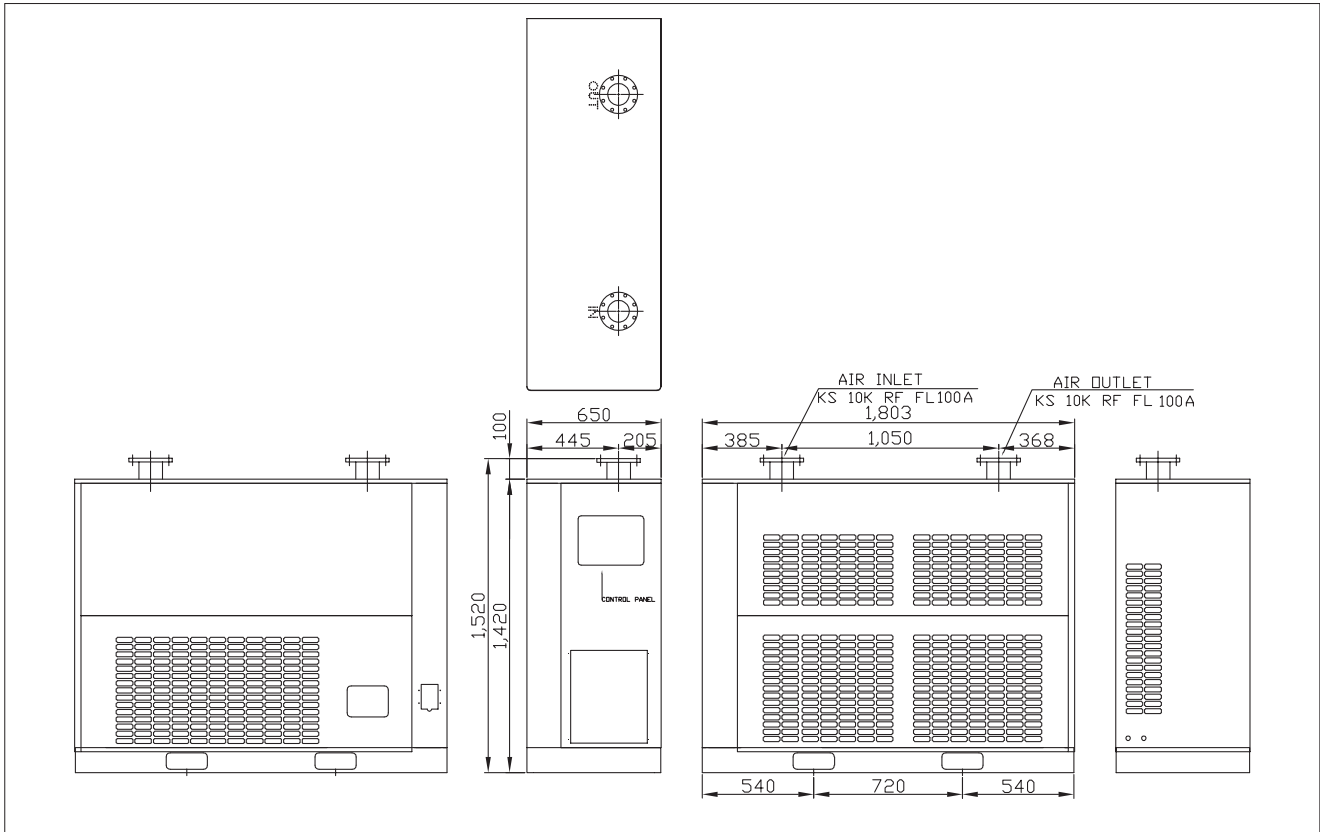
Dimensions (KDHR 100)



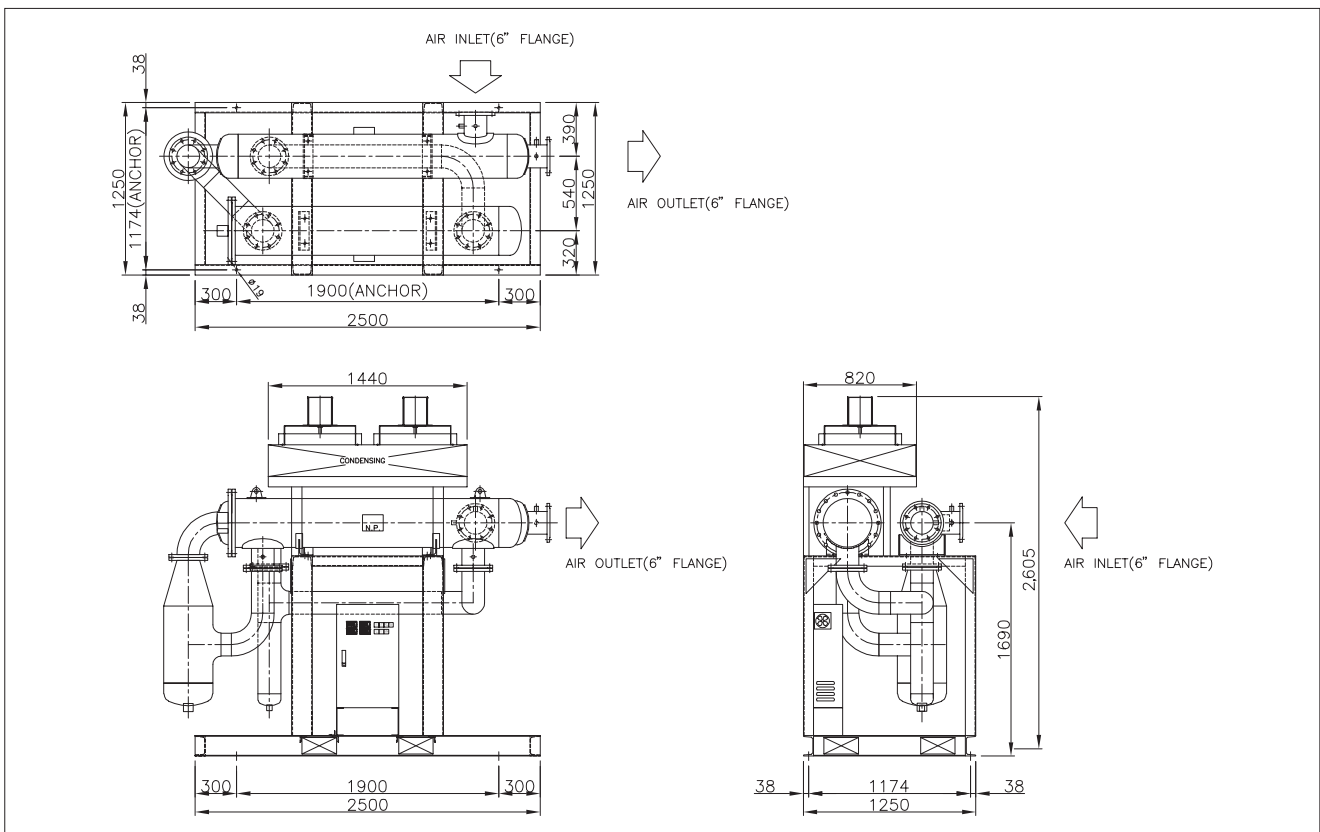
Dimensions (KDHR 150, 200)



Dimensions (KDHR 250, 300, 400)



Dimensions (KDHR 500, 600)



Dimensions (KDHR 800)

