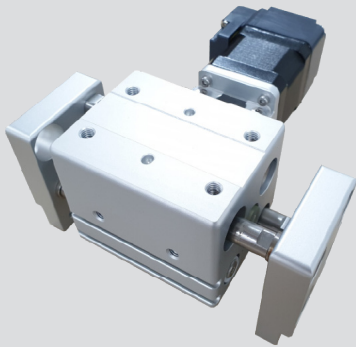


KEWG series



Features

- Pneumatic wide grippers can be replaced
- Structure of rack gear synchronous drive
- High-speed opening/closing speed available
- Collaborative robot and effect applicable structure
- Wide grip available
- Applicable to step motor and servo motor
- Ease of stacking square trays

How to Order

KEWG 20 - S1

① ② ③

① Series

KEWG	Wide open/close type electric gripper
------	---------------------------------------

② Size

	Size (Width X Height)
20	58 X 106 mm

③ Sensor type

Type	Solid state auto switch (Φ4)	
	NC	NO
Nil	-	-
S1	2	1
S2	2	-
S3	-	2
S4	-	3

※Standard length: 2M

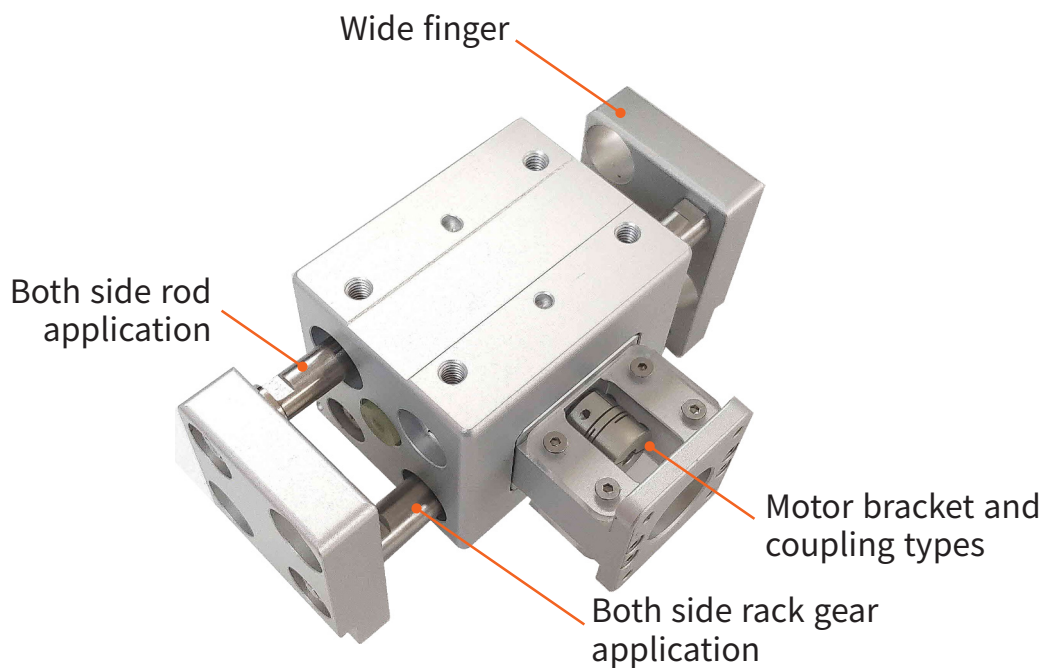
Specification

Type		KEWG 20
Operating type		Rack gear
Guide Type		Sliding bush
Open/close stroke	(mm)	40
Max. gripping force closed/open "Note 1)"	(N)	90
Max. workpiece mass	(kg)	0.9
Max. jig length "Note 2)"	(mm)	100
Repetition precision	(mm)	±0.2
Operating temperature	(°C)	5 ~ 60
Applicable motor size	(mm)	60

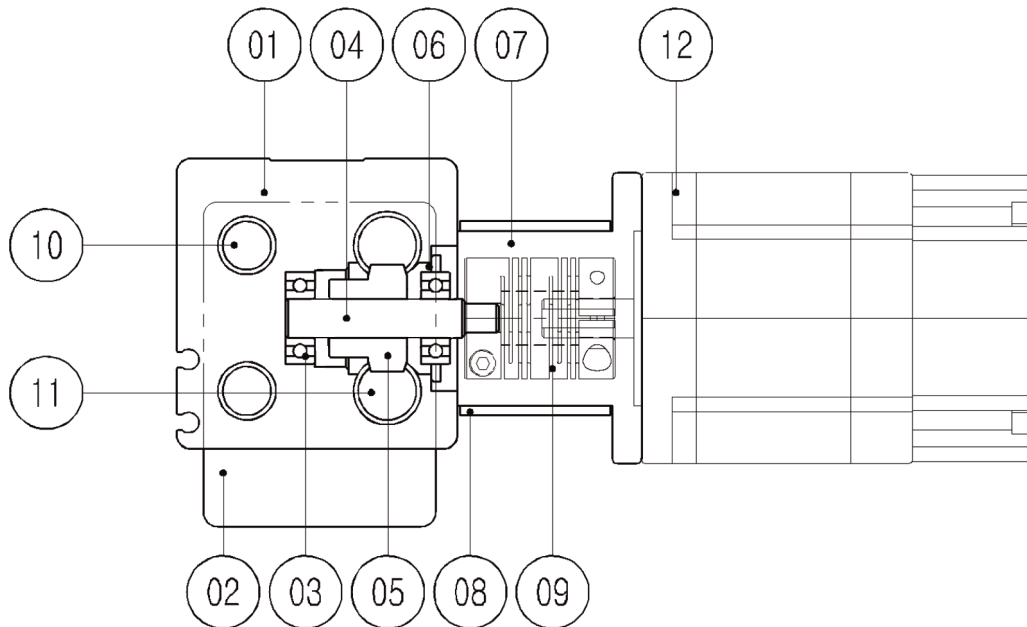
Note 1) In the case of gripping force, select at least 10 times the mass of the workpiece.

Note 2) Please select a gripping point within the maximum length of the jig.

Features



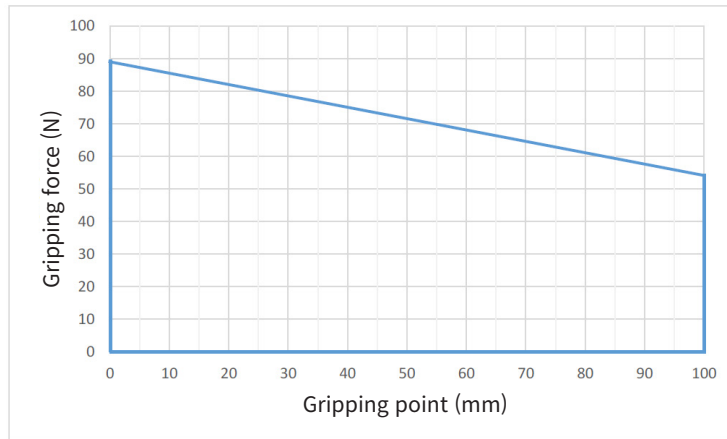
Structure



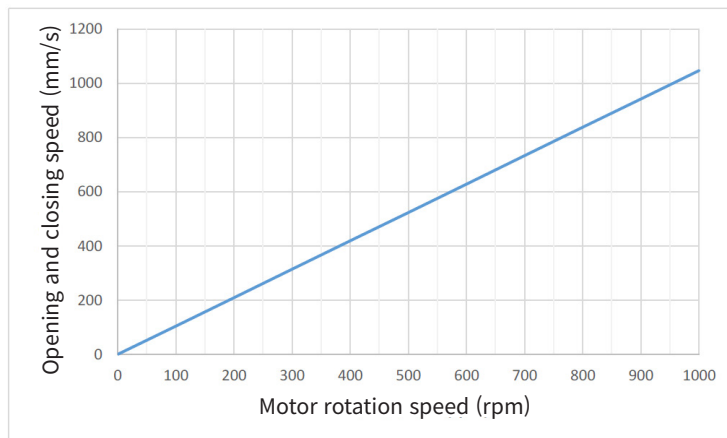
No.	Parts	Material	No.	Parts	Material
1	Body	Aluminum alloy	7	Motor bracket	Aluminum alloy
2	Finger	Aluminum alloy	8	Sight glass	Transparent plastic
3	Bearing	Bearing steel	9	Coupling	Aluminum alloy
4	Shaft	Stainless steel	10	Guide	Stainless steel
5	Spur gear	Carbon steel	11	Rack gear	Carbon steel
6	Bearing cover	Carbon steel	12	Motor	-

Product characteristic table

KEWG20 gripping force - gripping point graph



KEWG20 Open/close speed graph according to motor rotation speed



Application example of gripping force according to gripping point

[example]

What if the gripping force of KEWG20 is obtained when the gripping point is 25MM?

■ What is the maximum usable workpiece mass when the gripping point is 20mm?

L : Gripping point
W : Work center

Gripping point of KEWG20 - If you check the gripping force graph, the gripping force is about 80N when the gripping point is 20mm.



Dimensions

KEWG 20

