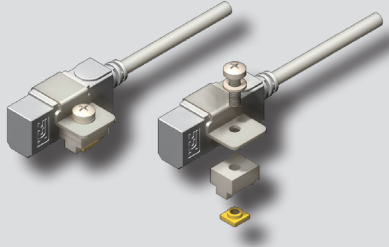


D-HT150D series



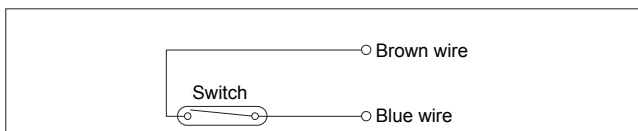
| Applicable cylinder |
|-----------------------------------|
| ADF Ø40 ~ Ø160 ADFM Ø40 ~ Ø100 |

| Symbol |
|--------|
| |

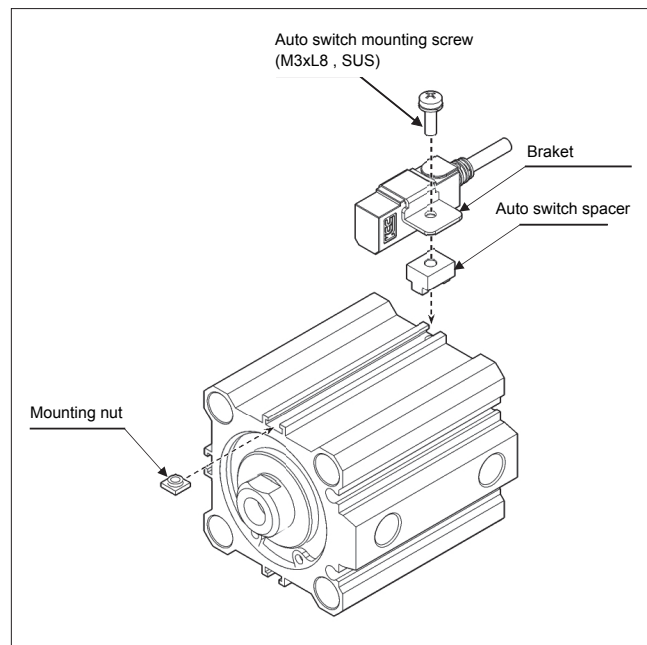
Specifications

| Model | D-HT150D |
|----------------------------|---------------------------|
| Contact capacity | 10W |
| Switching current(Max.) | 0.5A |
| Switching voltage(Max.) | VDC100, VAC100 |
| Breakdown voltage(Min.) | VDC150 |
| Operation time(Max.) | 0.6ms |
| Return time(Max.) | 0.1ms |
| Contact resistance | 250mΩ |
| Shock/vibration resistance | 30g/20g |
| Magnetic properties | Pull-In 58~74 |
| Ambient Temperature | -40 ~ 130°C (-50 ~ 130°C) |
| Wire length | 1.5m |

Circuit Diagram



Mounting



Dimensions

