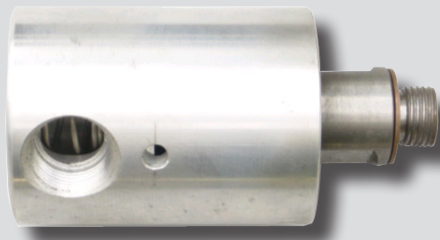


# DR6000 series



DR 6012-M16

## Features

- The bearing structure enables to maintain a good balance under high pressure applied in axial direction and guarantees silent operation even during high-speed rotation.
- By adopting a special-material mechanical seal, it is used as a rotary joint for the supply of gun drill cutting oil and glass boring, which requires high speed.

## Specifications

Model	DR6012-M16
Head compartment	Simplex L
Connection type	Left-hand screw
Port size	M16×P1.5
Max. pressure	70kgf/cm <sup>2</sup> G
Max. temperature	120℃
Max. rotation	12000rpm
Fluid	Water, Cutting oil, oil

## Dimensions

