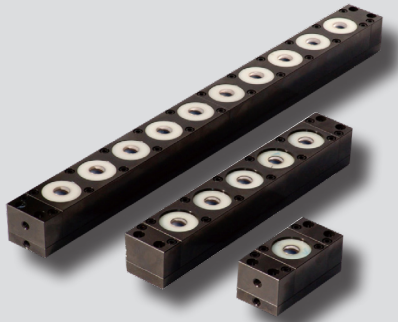


KABL series



Features

- Pneumatic type - no hydraulic pump needed
- Easy installation and use
- Less cost compared with hydraulic lifter
- Convenient maintenance
- Improved lifter capacity with dual air cylinders
- Aluminum body - light
- Superior directionality using balls
- Block joint type - changeable assemblage
- Forced ascent and descent possible
- Increased ball durability using urethane ball cover

How to Order

KABL 50D - 5B

①

②

① Series

KABL	Air ball lifter
------	-----------------

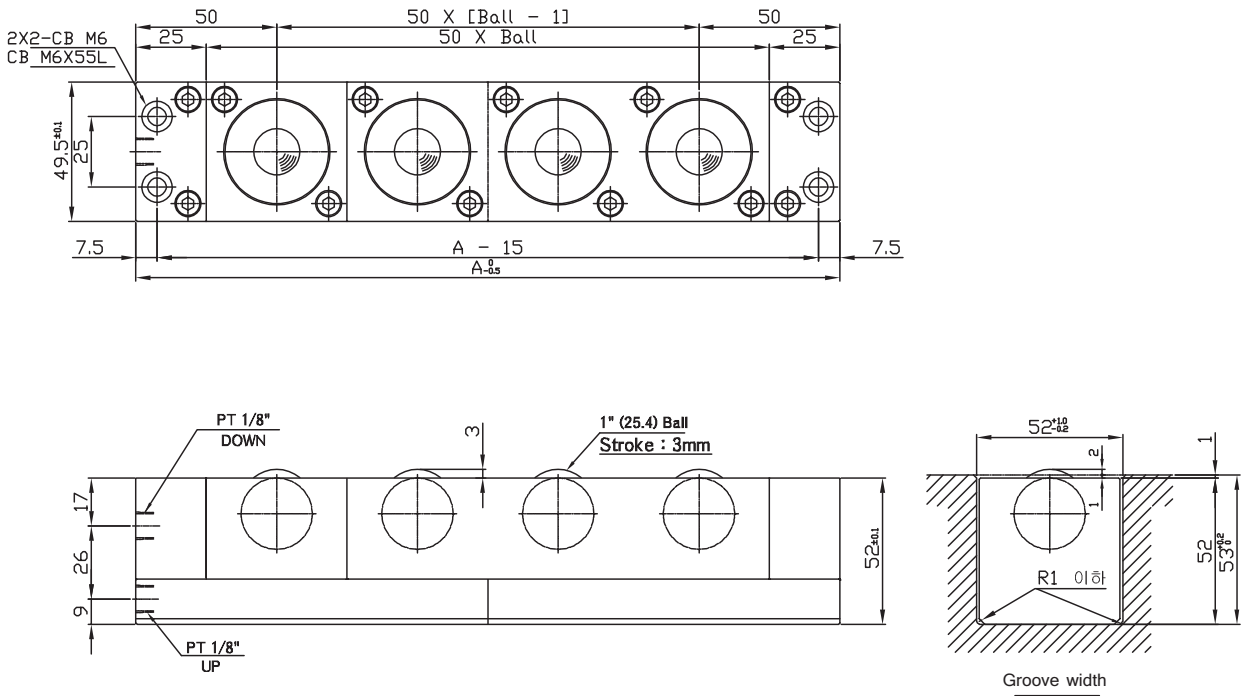
② Number of ball

1B	1
2B	2
...	...
20B	20

Specifications

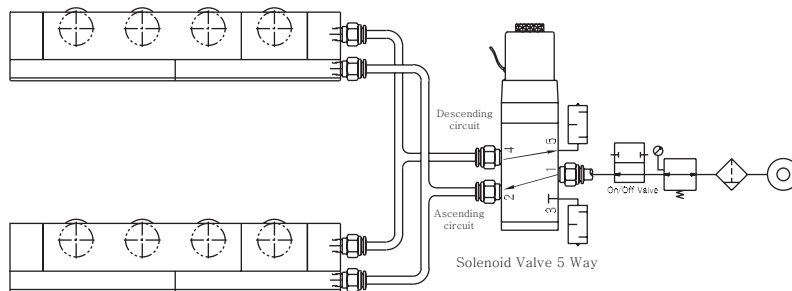
Model	Number of ball	Ascending force kN (kgf)				Descending force kN (kgf)				Total length A (mm)
		Pressure of compressed air MPa (kgf/cm ²)				Pressure of compressed air MPa (kgf/cm ²)				
		0.4 (4.08)	0.5 (5.10)	0.6 (6.12)	0.7 (7.14)	0.4 (4.08)	0.5 (5.10)	0.6 (6.12)	0.7 (7.14)	
KABL50D-1B	1	1.10 (112)	1.37 (140)	1.64 (168)	1.92 (196)	0.10 (10.3)	0.13 (12.8)	0.15 (15.4)	0.18 (17.9)	100
KABL50D-2B	2	2.19 (224)	2.74 (279)	3.29 (335)	3.84 (391)	0.20 (20.5)	0.25 (25.6)	0.30 (30.8)	0.35 (35.9)	150
KABL50D-3B	3	3.29 (335)	4.11 (419)	4.93 (503)	5.76 (587)	0.30 (30.8)	0.38 (38.5)	0.45 (46.1)	0.53 (53.8)	200
KABL50D-4B	4	4.39 (447)	5.48 (559)	6.58 (671)	7.67 (783)	0.40 (41.0)	0.50 (51.3)	0.60 (61.5)	0.70 (71.8)	250
KABL50D-5B	5	5.48 (559)	6.85 (699)	8.22 (838)	9.59 (978)	0.50 (51.3)	0.63 (64.1)	0.75 (76.9)	0.88 (89.7)	300
KABL50D-6B	6	6.58 (671)	8.22 (838)	9.87 (1006)	11.5 (1174)	0.60 (61.5)	0.75 (76.9)	0.91 (92.3)	1.06 (108)	350
KABL50D-7B	7	7.67 (783)	9.59 (978)	11.5 (1174)	13.4 (1369)	0.70 (71.8)	0.88 (89.7)	1.06 (108)	1.23 (126)	400
KABL50D-8B	8	8.77 (894)	11.0 (1118)	13.2 (1342)	15.3 (1565)	0.80 (82.0)	1.01 (103)	1.21 (123)	1.41 (144)	450
KABL50D-9B	9	9.87 (1006)	12.3 (1258)	14.8 (1509)	17.3 (1761)	0.91 (92.3)	1.13 (115)	1.36 (138)	1.58 (162)	500
KABL50D-10B	10	11.0 (1118)	13.7 (1397)	16.4 (1677)	19.2 (1956)	1.01 (103)	1.26 (128)	1.51 (154)	1.76 (179)	550
KABL50D-11B	11	12.1 (1230)	15.1 (1537)	18.1 (1845)	21.1 (2152)	1.11 (113)	1.38 (141)	1.66 (169)	1.94 (197)	600
KABL50D-12B	12	13.2 (1342)	16.4 (1677)	19.7 (2012)	23.0 (2348)	1.21 (123)	1.51 (154)	1.81 (185)	2.11 (215)	650
KABL50D-13B	13	14.3 (1453)	17.8 (1817)	21.4 (2180)	24.9 (2543)	1.31 (133)	1.63 (167)	1.96 (200)	2.29 (233)	700
KABL50D-14B	14	15.3 (1565)	19.2 (1956)	23.0 (2348)	26.9 (2739)	1.41 (144)	1.76 (179)	2.11 (215)	2.46 (251)	750
KABL50D-15B	15	16.4 (1677)	20.6 (2096)	24.7 (2515)	28.8 (2935)	1.51 (154)	1.89 (192)	2.26 (231)	2.64 (269)	800
KABL50D-16B	16	17.5 (1789)	21.9 (2236)	26.3 (2683)	30.7 (3130)	1.61 (164)	2.01 (205)	2.41 (246)	2.82 (287)	850
KABL50D-17B	17	18.6 (1900)	23.3 (2376)	28.0 (2851)	32.6 (3326)	1.71 (174)	2.14 (218)	2.56 (261)	2.99 (305)	900
KABL50D-18B	18	19.7 (2012)	24.7 (2515)	29.6 (3018)	34.5 (3521)	1.81 (185)	2.26 (231)	2.72 (277)	3.17 (323)	950
KABL50D-19B	19	20.8 (2124)	26.0 (2655)	31.2 (3186)	36.5 (3717)	1.91 (195)	2.39 (244)	2.87 (292)	3.34 (341)	1000
KABL50D-20B	20	21.9 (2236)	27.4 (2795)	32.9 (3354)	38.4 (3913)	2.01 (205)	2.51 (256)	3.02 (306)	3.52 (359)	1050

Dimensions

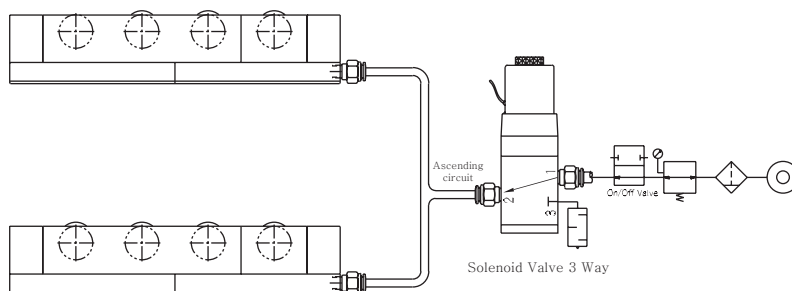


Example

Forced ascent / descent type



Forced ascent / free descent type



Use hand valve instead of solenoid valve in case of automatic control