

# KPVI series



### Features

- Light weight type with less noise
- Strong local vibration power
- Realize the long life span with new system of simple structure
- Various sizes according to desired output
- Non-oil supply product (Oilless product)
- Able to apply to various fields because it is complete closed type (in the water etc.)

### How to Order

KPV - 16

①                      ②

#### ① Series

KPVI	Air vibrator (Internal)
------	-------------------------

#### ② Tube bore size

10	Ø10
16	Ø16
22	Ø22
30	Ø30
40	Ø40
50	Ø50

### Specifications

Model	Pressure / Measure	Vibration force(N)	Frequency [VPM](Hz)	Air consumption (L/min)	Weight(g)
KPVI-10	4bar	4	6,780 (113)	6	70
	6bar	6	8,640 (144)	15	
KPVI-16	4bar	17	5,628 (93.8)	17	180
	6bar	20	6,780 (113)	36	
KPVI-22	4bar	46	3,750 (62.5)	32	420
	6bar	62	4,500 (75)	70	
KPVI-30	4bar	88	4,128 (68.8)	65	850
	6bar	116	4,878 (81.3)	135	
KPVI-40	4bar	173	3,378 (56.3)	100	1720
	6bar	254	4,128 (68.8)	205	
KPVI-50	4bar	277	2,250 (37.5)	150	3210
	6bar	407	3,000 (50)	312	

※ These measurements were measured under our test conditions. And they depend on various conditions.

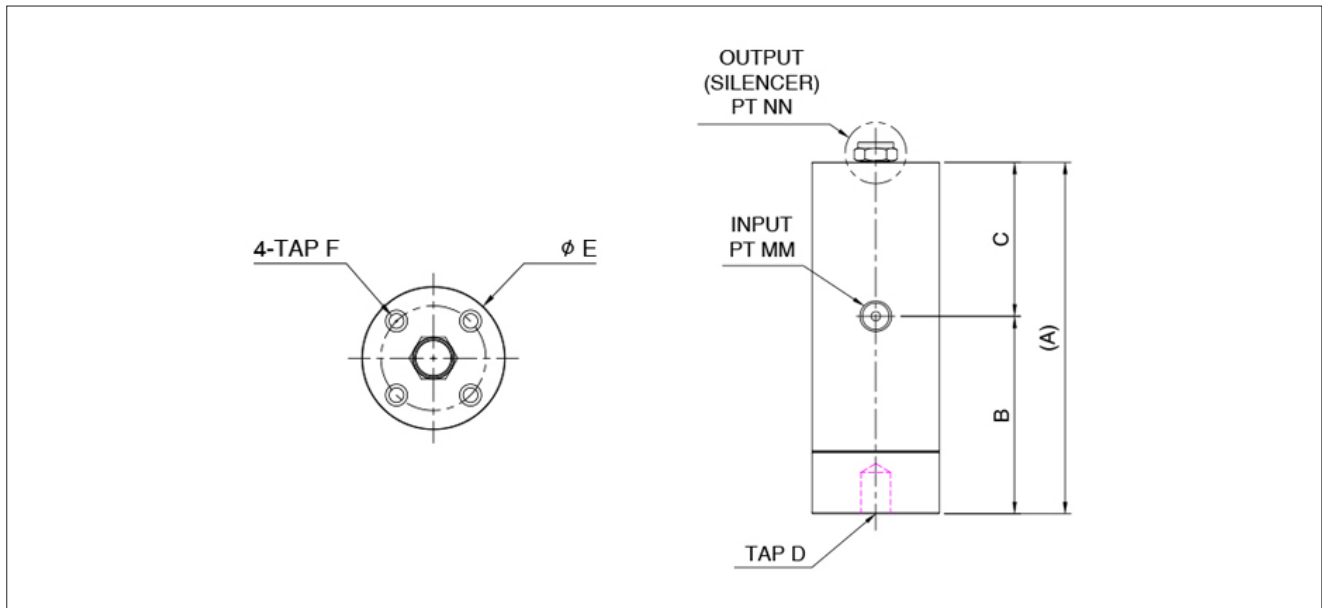
### Applications

- Prevention of clogging of pipes or tubes during particle transfer
- Prevention of clogging of hoppers by particles
- Air linear feeder and parts feeder
- Powder pressing and flattening
- Cleaning, drying and screening
- Other industrial fields

### ⚠ Precautions for use

1. Observe working pressure (Recommended pressure: 3~6 BAR)
2. Prohibit to use as a power source such as motor and cylinder etc.
3. It can be an error in smooth operation such as blockage of air circuit due to oil during the supply.

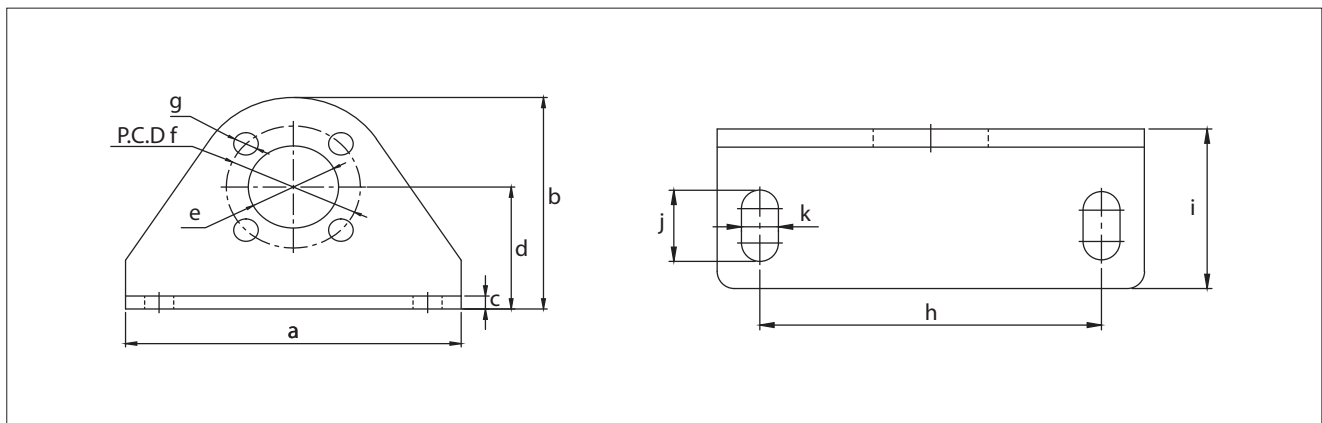
**Dimensions**



Unit: mm

Model	A	B	C	D	E	F	MM	NN
KPVI-10	66	39.5	26.5	M6 DP8	22	M3 DP6 P.C.D15	M5	M5
KPVI-16	90	48.5	41.5	M8 DP10	30	M4 DP10 P.C.D22	M5	M5
KPVI-22	113	63.5	49.5	M10 DP14	41	M5 DP12 P.C.D30	1/8	1/8
KPVI-30	139	76	63	M12 DP12	52	M6 DP15 P.C.D38	1/4	1/4
KPVI-40	160	91	69	M14 DP18	69	M8 DP15 P.C.D52	1/4	1/4
KPVI-50	198	107	91	M16 DP22	84	M10 DP15 P.C.D64	3/8	3/8

**Dimensions - Bracket**



Unit: mm

Model	a	b	c	d	e	f	g	h	i	j	k
KPVI-10	50	32	3.2	20	9.2	15	3.5	38	24	10.5	5.5
KPVI-16	65	40	3.2	24	14.2	22	4.5	50	28	12.5	6.5
KPVI-22	75	52	3.2	30	20.2	30	5.5	60	28	12.5	6.5
KPVI-30	100	69	5	40	24	38	6.5	80	38	16.5	8.5
KPVI-40	120	84	5	48	35.5	52	8.5	95	42	18.5	10.5
KPVI-50	140	100	5	58	45.5	64	10.5	115.5	58	34.5	10.5