

# KPVK series



### Features

- New and easy piping connection method
- Less noise, light weight
- Strong local vibration power

### How to Order

## KPVK - 16

①

### ① Model

KPVK-10
KPVK-16
KPVK-22
KPVK-30
KPVK-40
KPVK-50

### Specifications

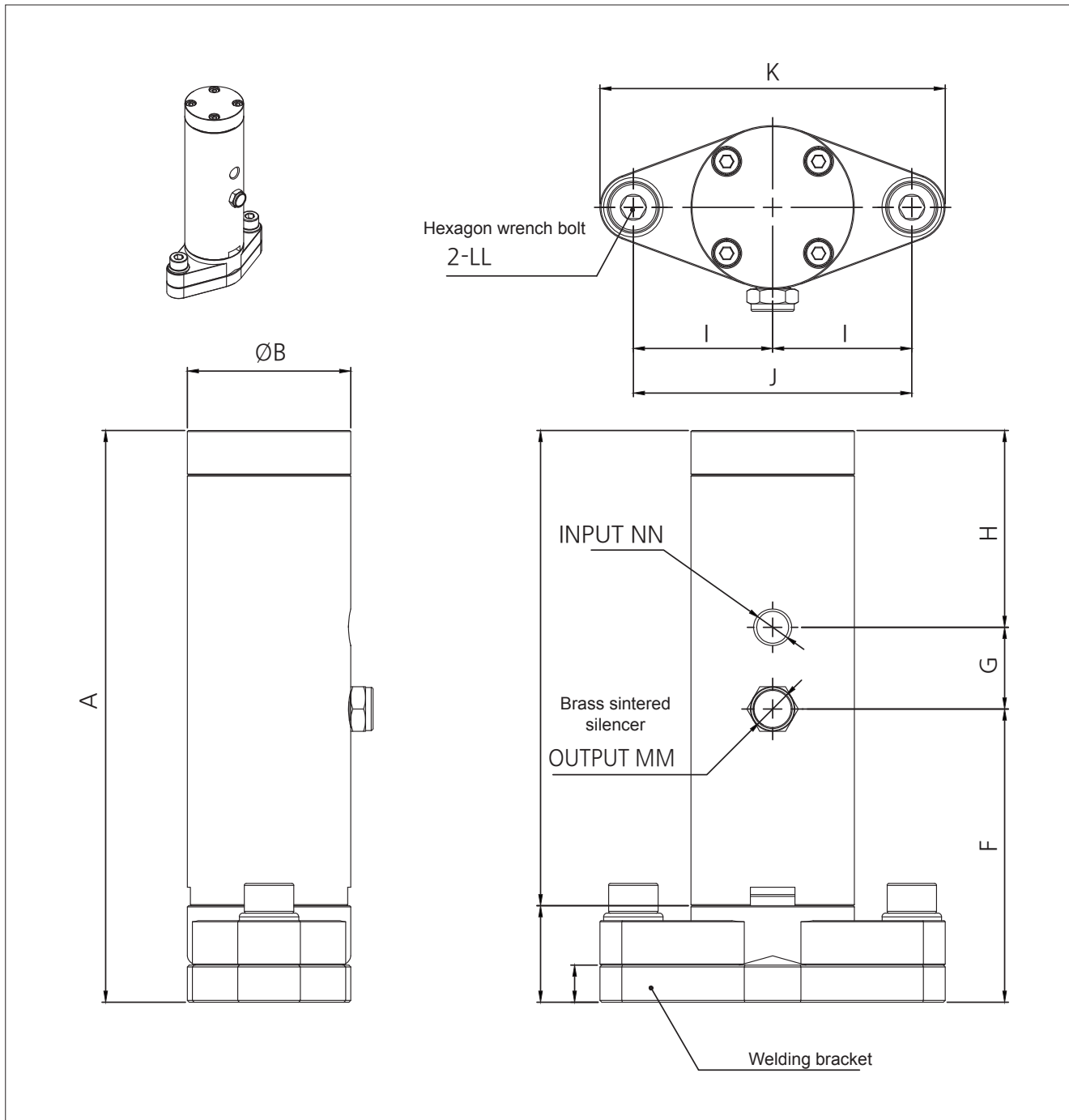
Model	Pressure	Vibration force(N)	Frequency [VPM](Hz)	Air consumption (L/min)	Operating pressure range	Noise(dB)	Weight(g)
KPVK-10	4kgf/cm <sup>2</sup>	24	6,000 (100)	14	3~6kgf/cm <sup>2</sup>	73	160
	6kgf/cm <sup>2</sup>	38.4	7,980 (133)	25			
KPVK-16	4kgf/cm <sup>2</sup>	41.4	4,500 (75)	26		80	380
	6kgf/cm <sup>2</sup>	58.9	4,950 (82.5)	46			
KPVK-22	4kgf/cm <sup>2</sup>	56	3,750 (62.5)	80		82	690
	6kgf/cm <sup>2</sup>	72	4,500 (75)	120			
KPVK-30	4kgf/cm <sup>2</sup>	192	3,000 (50)	93		83	1,290
	6kgf/cm <sup>2</sup>	275	3,750 (62.5)	133			
KPVK-40	4kgf/cm <sup>2</sup>	352	2,418 (40.3)	146		85	2,800
	6kgf/cm <sup>2</sup>	409	3,558 (59.3)	226			
KPVK-50	4kgf/cm <sup>2</sup>	512	1,500 (25)	225		88	4,580
	6kgf/cm <sup>2</sup>	709	1,092 (18.2)	350			

※ These measurements were measured under our test conditions. And they depend on various conditions.

### ⚠ Precautions for use

1. Recommended air temperature: 0 ~ 60 °C.
2. This is oilless item so it does not need the supply of lubricant. (Reason of mal-function)
3. Moisture, oil and sludge in the compressed air becomes the direct reason of failure. To prevent this, air filter is recommended to use on the front part of item.

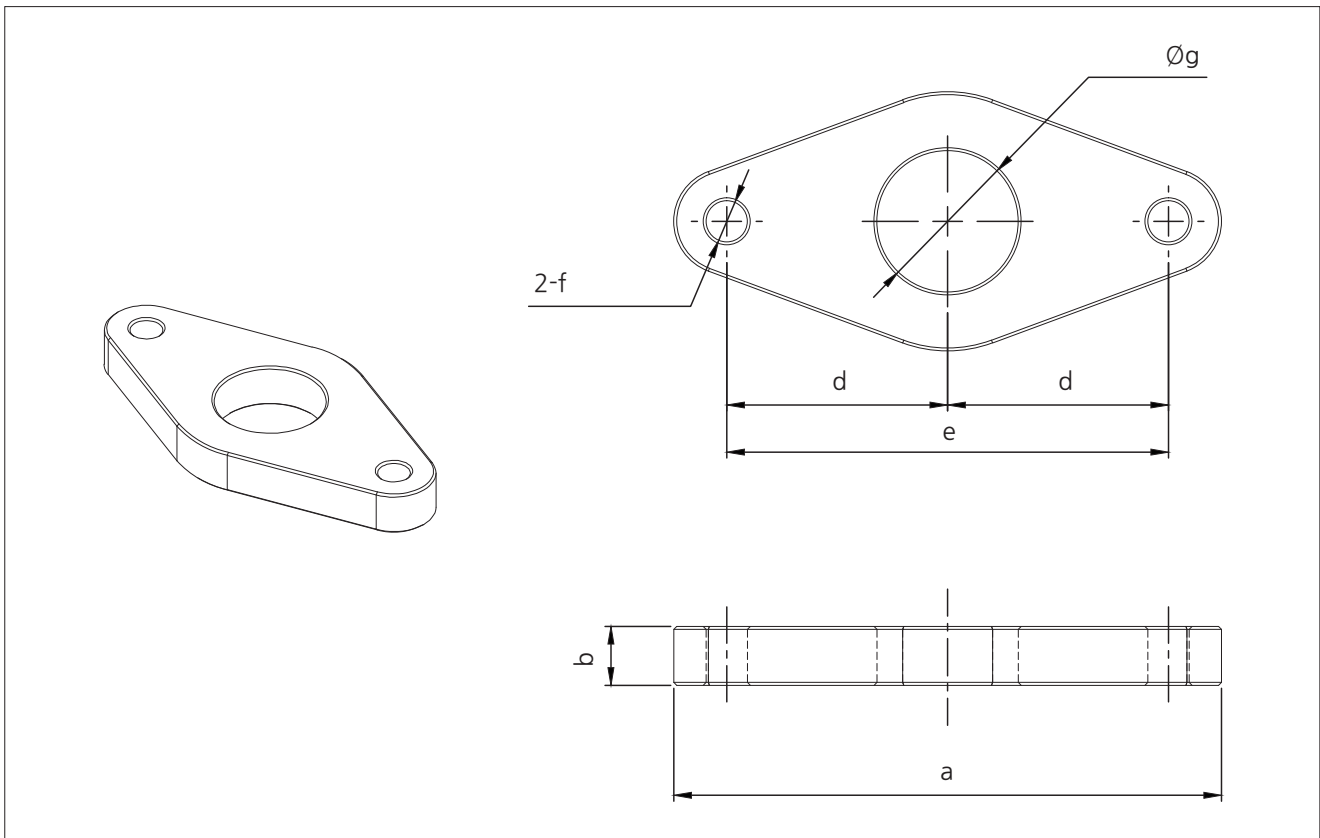
**Dimensions**



Unit: mm

Model	A	B	C	D	E	F	G	H	I	J	K	LL	MM	NN
KPVK-10	86	29	70	16	6	43.5	14	28.5	22	45	57	M5	M5	M5
KPVK-16	121	38	98	23	8	66.5	17.5	37	31	62	77	M6	PT 1/8"	PT 1/8"
KPVK-22	154	44	128	26	10	79	22	53	37.5	75	93	M8	PT 1/8"	PT 1/8"
KPVK-30	181	54	153	28	10	96	27	58	42.5	85	110	M8	PT 1/4"	PT 1/4"
KPVK-40	215	74	180	35	10	112.5	35.5	67	55	110	140	M10	PT 3/8"	PT 3/8"
KPVK-50	262	84	220	42	12	129.5	53.5	79	65	130	170	M12	PT 3/8"	PT 3/8"

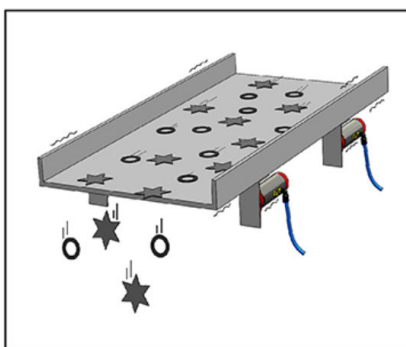
**Dimensions - Plate for welding**



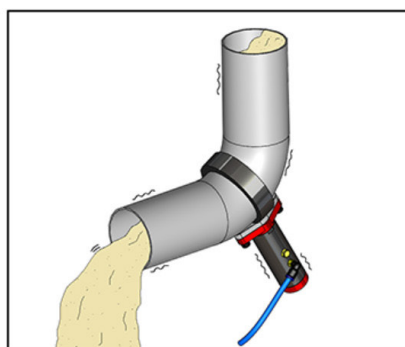
Unit: mm

Model	a	b	c	d	e	f	g
KPVK-10	57	6	29	22.5	45	M5	12
KPVK-16	77	8	38	31	62	M8	15
KPVK-22	93	10	44	37.5	75	M8	24
KPVK-30	110	10	54	42.5	85	M8	25
KPVK-40	140	10	74	55	110	M10	35
KPVK-50	170	12	84	65	130	M12	40

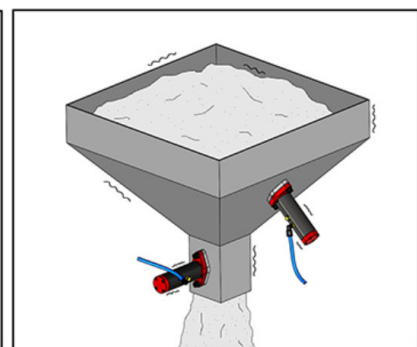
**Application Example**



CHUTE



PIPE



HOPPER / SILO