

KPV series



Features

- Less noise, light weight
- Strong local vibration power
- Long life span with simple structure
- Various sizes for desired output
- None-lubricant required

How to Order

KPV - 16

①

②

① Series

KPV	Air vibrator
-----	--------------

② Tube bore size

10	Ø10
16	Ø16
22	Ø22
30	Ø30
40	Ø40
50	Ø50

Specifications

Model	Measure		Vibration force [N]	Frequency [VPM](Hz)	Air consumption (Liters/minute)	Weight (g)
	Pressure					
KPV-10	4 bar [4.07 kgf/cm ²]		7	4,500 (75)	8	70
	6 bar [6.11 kgf/cm ²]		9	5,250 (87.5)	17	
KPV-16	4 bar [4.07 kgf/cm ²]		13	3,378 (56.3)	20	180
	6 bar [6.11 kgf/cm ²]		15	4,500 (75)	41	
KPV-22	4 bar [4.07 kgf/cm ²]		48	3,000 (50)	38	470
	6 bar [6.11 kgf/cm ²]		63	3,378 (56.3)	77	
KPV-30	4 bar [4.07 kgf/cm ²]		94	2,250 (37.5)	69	920
	6 bar [6.11 kgf/cm ²]		111	3,000 (50)	140	
KPV-40	4 bar [4.07 kgf/cm ²]		189	1,878 (31.3)	102	2080
	6 bar [6.11 kgf/cm ²]		226	2,250 (37.5)	209	
KPV-50	4 bar [4.07 kgf/cm ²]		345	1,500 (25)	166	3710
	6 bar [6.11 kgf/cm ²]		448	1,878 (31.3)	331	

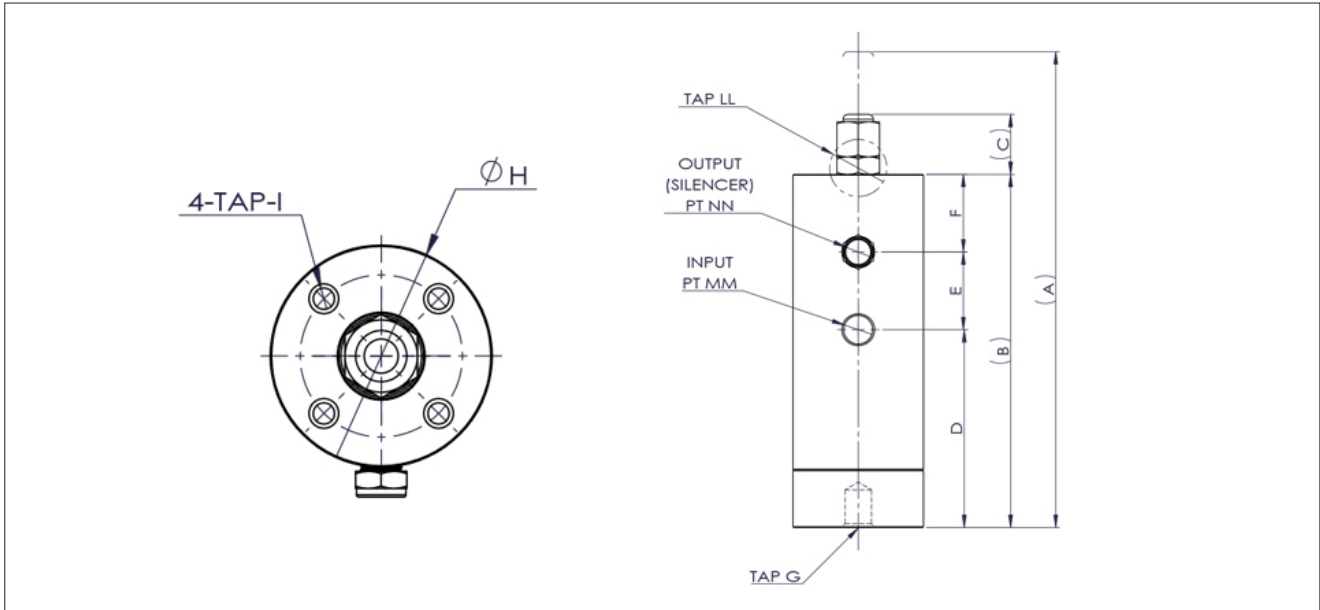
Applications

- Prevention of clogging of pipes, tubes or happens during particle transfer.
- Air linear feeder and parts feeder.

Precautions

- Compliance with operating pressure. (Recommended pressure: 3~6 BAR)
- Prohibit to use as a power source such as motor or cylinder.
- It can be an error in smooth operation such as blockage of air circuit due to oil supply.

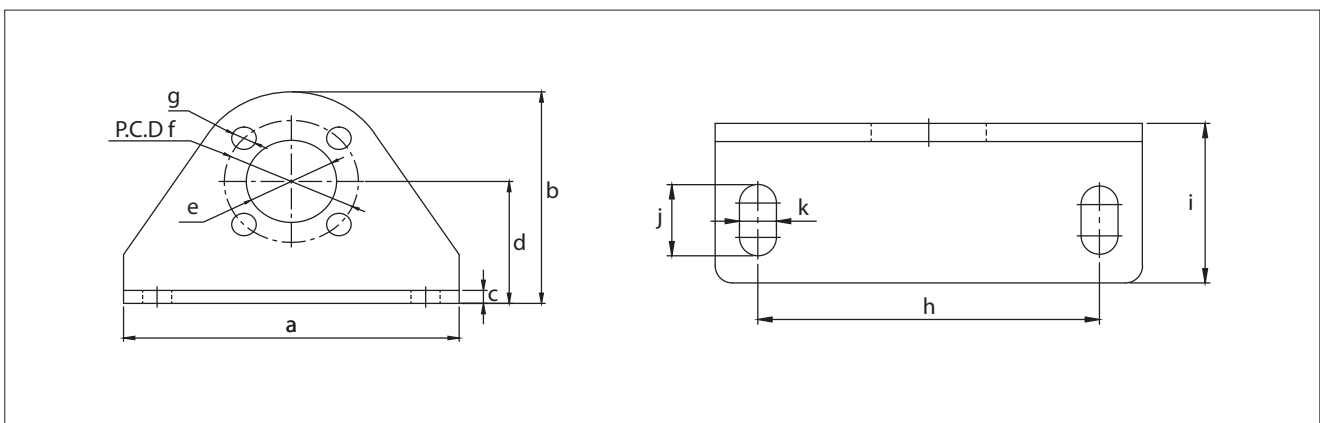
Dimensions



Unit :mm

Model	A	B	C	D	E	F	G	H	I	MM	NN	LL
KPV-10	90	60	16	35.5	14	10.5	M6 DP8	22	M3 DP8-P.C.D15	M5	M5	M4
KPV-16	122	86	15	44.5	20.5	21	M8 DP10	30	M4 DP10-P.C.D22	M5	M5	M6
KPV-22	161	111	19	60.5	25	25.5	M10 DP10	41	M5 DP12-P.C.D30	1/8	1/8	M8
KPV-30	206	141	24	79	31	31	M12 DP12	51	M6 DP8-P.C.D38	1/8	1/8	M10
KPV-40	241	165	33	86	43	36	M14 DP12	69	M8 DP15-P.C.D52	1/4	1/4	M16
KPV-50	294	200	42	101	57	42	M16 DP15	84	M10 DP15-P.C.D64	3/8	3/8	M18

Dimensions-Bracket



Unit:mm

Model	a	b	c	d	e	f	g	h	i	j	k
KPV-10	50	32	3.2	20	9.2	15	3.5	38	24	10.5	5.5
KPV-16	65	40	3.2	24	14.2	22	4.5	50	28	12.5	6.5
KPV-22	75	52	3.2	30	20.2	30	5.5	60	28	12.5	6.5
KPV-30	100	69	5	40	24	38	6.5	80	38	16.5	8.5
KPV-40	120	84	5	48	35.5	52	8.5	95	42	18.5	10.5
KPV-50	140	100	5	56	45.5	64	10.5	115.5	58	34.5	10.5