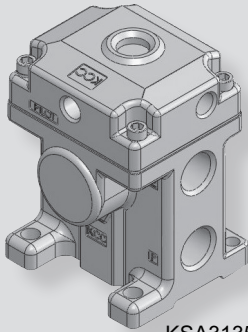
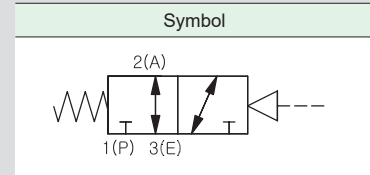


KSA3135 series



KSA3135-03



How to Order

KSA 31 3 5 - 03

①
②
③

① Port type

Nil	Rc(PT) (Standard)
G	G

③ Port size

03	Rc(PT), G 3/8
04	Rc(PT), G 1/2

② Body nominal size

3	3/8
---	-----

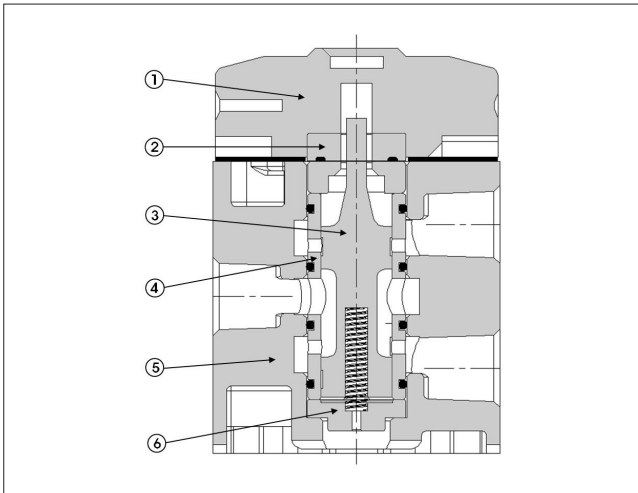
Specifications

Fluid	Air, Inert gas	
Port size	Rc(PT) 3/8, 1/2, G 3/8, G1/2	
Pilot port size	Rc(PT) 1/8	
Effective sectional area Smm ² (Cv)	Rc(PT) 3/8	37mm ² (2.0)
	Rc(PT) 1/2	43mm ² (2.4)
Operating pressure	0~10kgf/cm ² (0~1MPa)	
Pilot pressure	1~10kgf/cm ² (0.1~1MPa)	
Max. operating frequency	5 cycle/sec	
Lubrication	Not required (But, when lubricated Turbine oil ISO VG32 or equivalent)	
Manual override	Manual button (Option)	
Ambient temperature	-20℃ ~ 50℃	
Fluid temperature	5℃ ~ 60℃	
Weight	510g	

Features

- Direct acting type.
- Large capacity valve can be used for large actuator.
- Non-lubrication type and with dust proof metal sealing.

Structure



Part no.	Parts	Material
1	Adapter Plate	AL D/C
2	Sleeve Cover	Plastic Resin
3	Spool	SUS
4	Sleeve	SUS
5	Body	AL D/C
6	Spool S/P Cover	Plastic Resin

Dimensions

