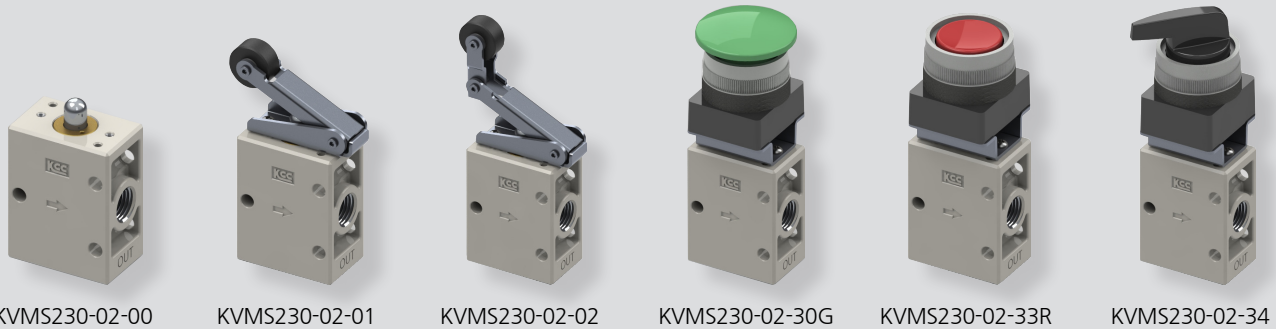
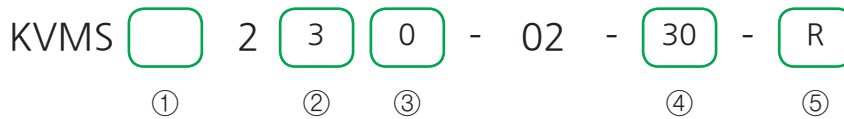


KVMS230 series



How to Order



① Port type

| | |
|-----|-------------------|
| Nil | Rc(PT) (Standard) |
| G | G |

② Number of ports

| | |
|---|--------|
| 3 | 3 Port |
|---|--------|

③ Stem type

| | |
|---|---------------|
| 0 | Standard type |
|---|---------------|

④ Type of actuator

| | |
|----|-------------------------|
| 00 | Standard |
| 01 | Roller lever |
| 02 | One-way lever |
| 30 | Push button (Mushroom) |
| 33 | Push button (Flat type) |
| 34 | Selector |
| 35 | Emergency push-button |

⑤ Option

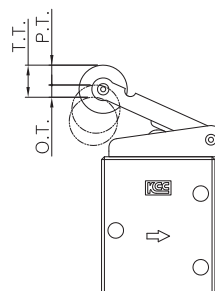
| | | |
|---|--------------|------------------------------|
| S | Metal roller | |
| R | Red | The color of the push button |
| G | Green | |
| R | Red | Emergency push button color |

| Model | KVMS 230-02-00 | KVMS 230-02-01 | KVMS 231-02-02(S) | KVMS 230-02-30/33/35 | KVMS 230-02-34 |
|--------|----------------|----------------|-------------------|----------------------|----------------|
| Symbol | | | | | |

Specifications

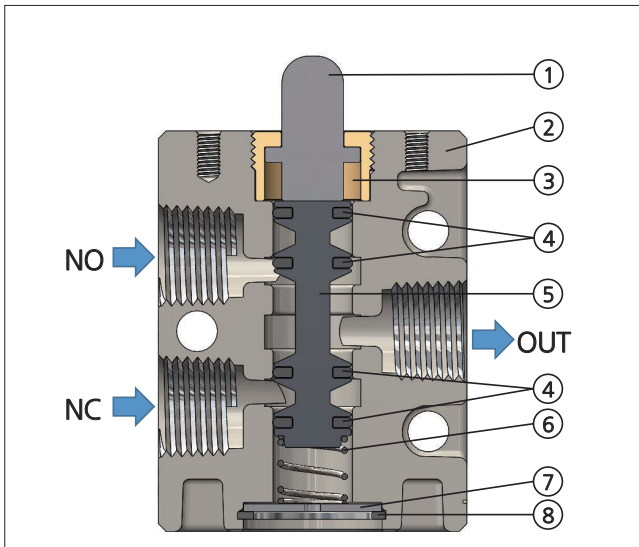
| | |
|--|--|
| Fluid | Compressed air |
| Port size | Rc(PT) 1/4, G 1/4 |
| Effective sectional area Smm ² (Cv) | 19mm ² (1.0) |
| Operating pressure | 0~9.9kgf/cm ² (0~0.99MPa) |
| Lubrication | Not required (But, when lubricated Turbine oil ISO VG32 or equivalent) |
| Ambient temperature | 0°C~60°C |
| Weight(Standard type) | 114g |

Operating Point of Mechanical Valve



P.T. : Working distance from the free position to the operating position of the actuator.
O.T. : Working distance from the operating position to the operating limit of the actuator.
T.T. : Working distance from the free position to the operating limit of the actuator.
F.O.F. : Force required by actuator to move from the free position to the operating limit of the operating.

Structure

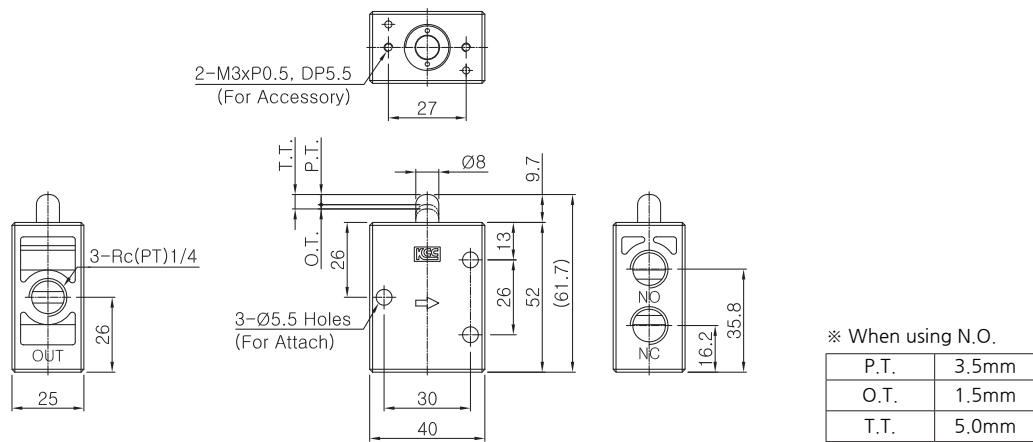


| No. | Parts. | Material |
|-----|-------------|----------|
| 1 | Rod | STS |
| 2 | Body | AL |
| 3 | Rod Guide | Brass |
| 4 | I-Ring | Rubber |
| 5 | Spool | AL |
| 6 | Spring | STS |
| 7 | Under Plate | Metal |
| 8 | Stop-ring | Metal |

Dimensions

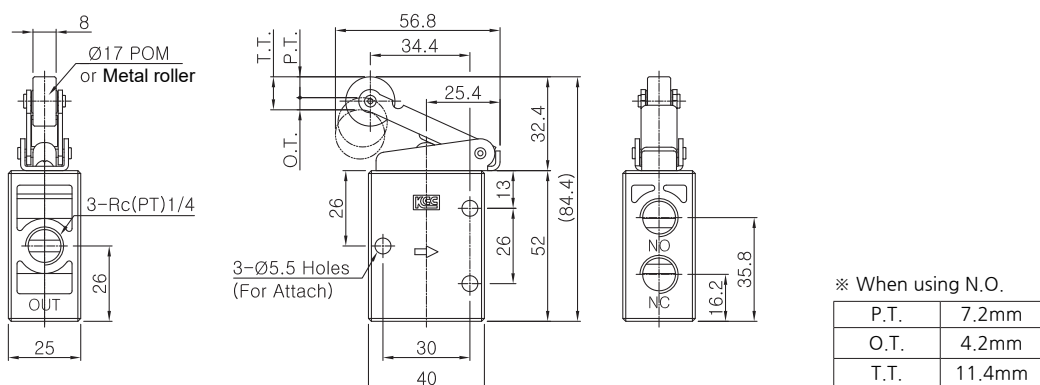
Standard

KVMS 230-02-00



Roller Lever

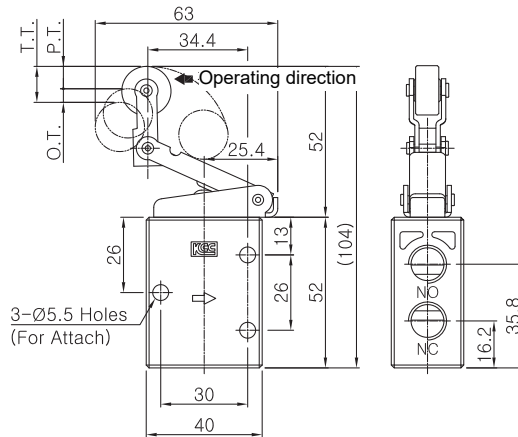
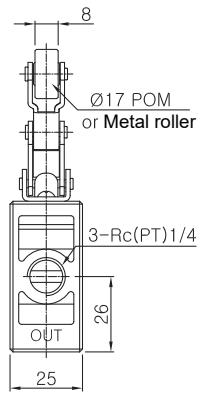
KVMS 230-02-01, KVMS 230-02-01S



Dimensions

One-Way Lever

KVMS 230-02-02, KVMS 230-02-02S

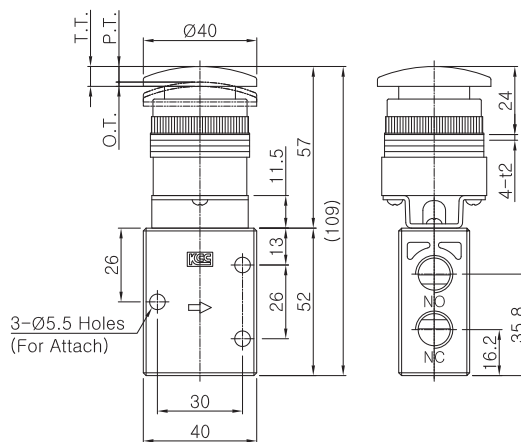
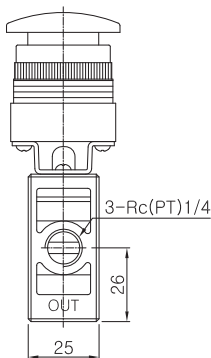


※ When using N.O.

| | |
|------|--------|
| P.T. | 7.7mm |
| O.T. | 4.7mm |
| T.T. | 12.4mm |

Push Button

KVMS 230-02-30R, G

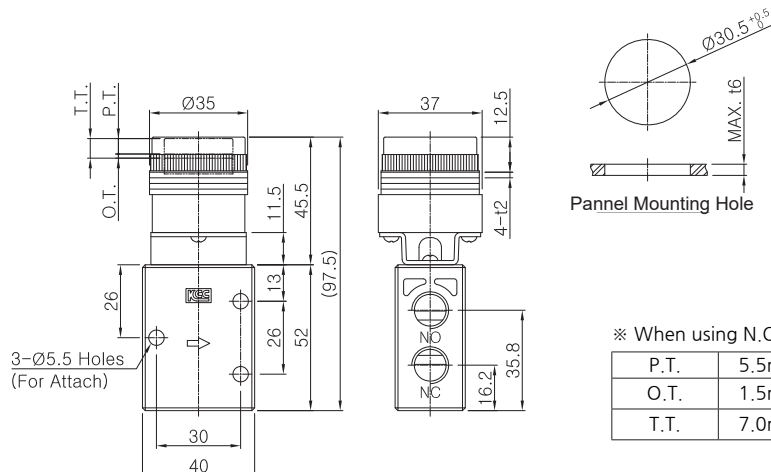
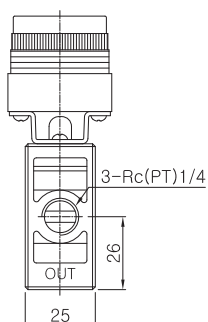


※ When using N.O.

| | |
|------|-------|
| P.T. | 5.5mm |
| O.T. | 1.5mm |
| T.T. | 7.0mm |

Push Button (Flat type)

KVMS 230-02-33R, G



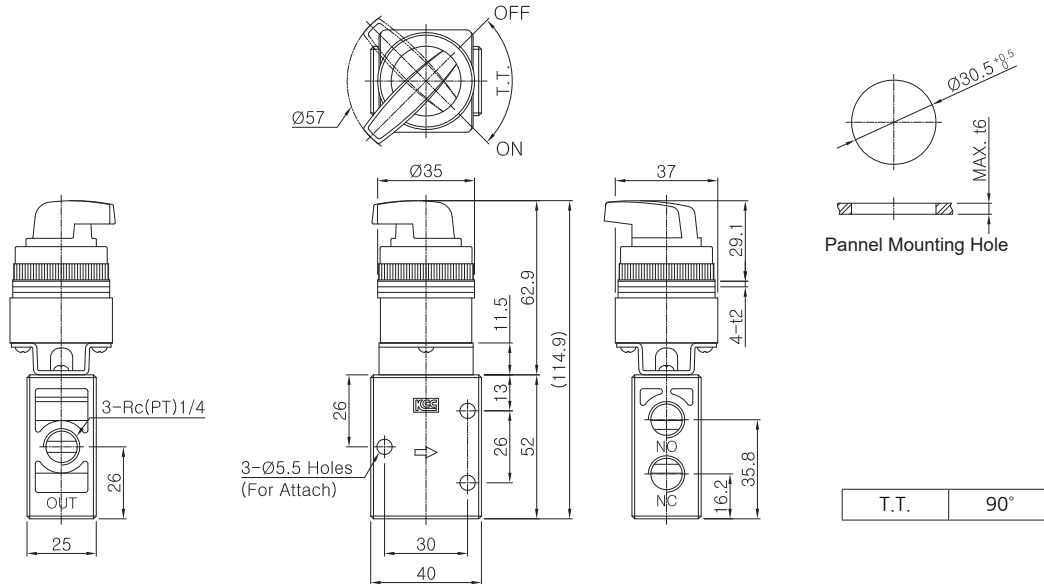
※ When using N.O.

| | |
|------|-------|
| P.T. | 5.5mm |
| O.T. | 1.5mm |
| T.T. | 7.0mm |

Dimensions

Selector

KVMS 230-02-34



Emergency push-button

KVMS 230-02-35R

