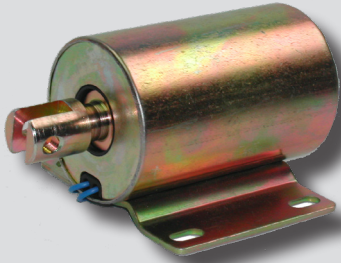


STD-18A series



How to Order

STD - 18A 24V

①

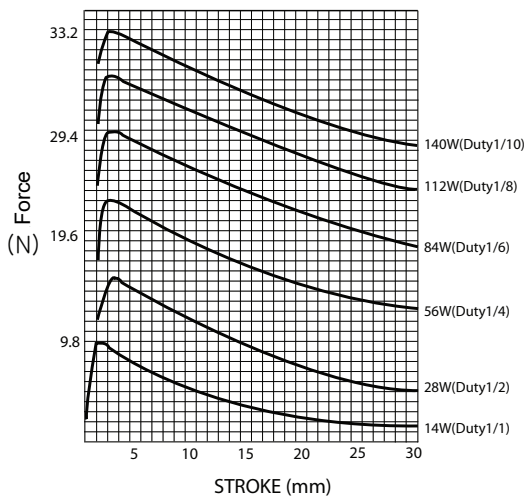
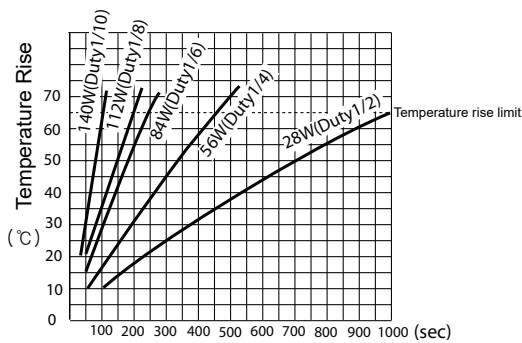
① Voltage

12V	DC 12V
24V	DC 24V
220V	AC 220V

Specifications

Max. stroke	25mm
Rated load	2.0~3.0kgf
Energizing ration	1/1, 1/2, 1/4, 1/6, 1/8, 1/10
Rated energizing	(1/1) When continuously energized
Voltage	AC 220V 50/60Hz DC 24V, 12V
Temperature rise	≤ 65°C at rated voltage
Coil insulation	Class E
Weight	682g

Rated Load & Temp. Rise Characteristic



Dimensions

