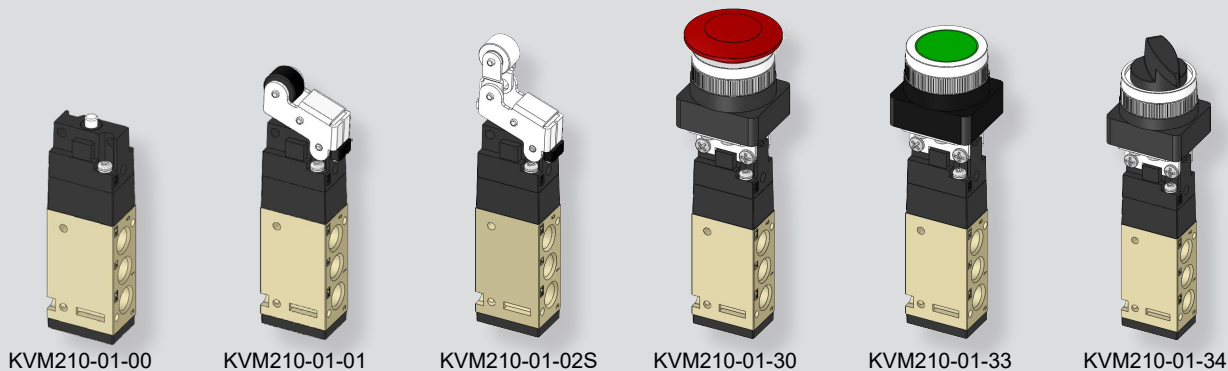


KVM210 series



How to Order

KVM 210 - 01 - S

①
②

① Port type

Nil	Rc(PT) (Standard)
G	G

③ Option

S	Metal roller	
R	Red	The color of the push button
G	Green	

② Type of actuator

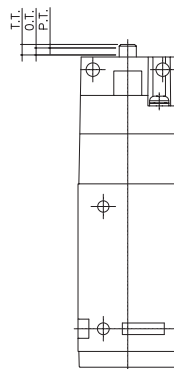
00	Standard
01	Roller lever
02	One-way lever
30	Push button
33	Push button (Flat type)
34	Selector

Model	KVM 210-01-00	KVM 210-01-01(S)	KVM 210-01-02(S)	KVM 210-01-30-33	KVM 210-01-34
Symbol					

Specifications

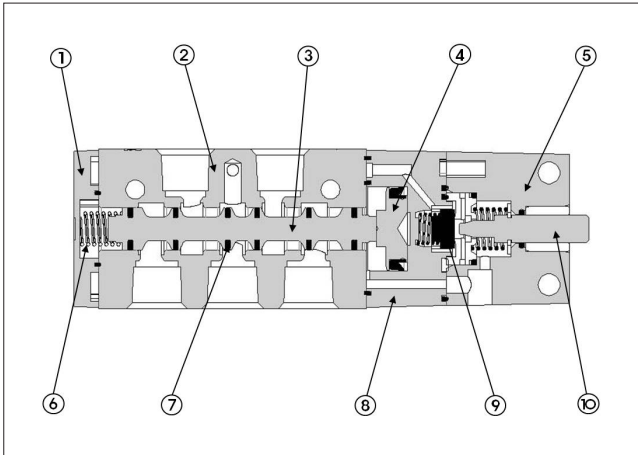
Fluid	Compressed air
Port size	Rc(PT) 1/8, G 1/8
Effective sectional area Smm ² (Cv)	12.6mm ² (0.6)
Operating pressure	1.5~9.9kgf/cm ² (0.15~0.99MPa)
Lubrication	Not required (But, when lubricated Turbine oil ISO VG32 or equivalent)
Ambient temperature	0°C ~ 60°C
Weight(Standard type)	140g

Operating Point of Mechanical Valve



- P.T. : Working distance from the free position to the operating position of the actuator.
- O.T. : Working distance from the operating position to the operating limit of the actuator.
- T.T. : Working distance from the free position to the operating limit of the actuator.
- F.O.F. : Force required by actuator to move from the free position to the operating limit of the operating.

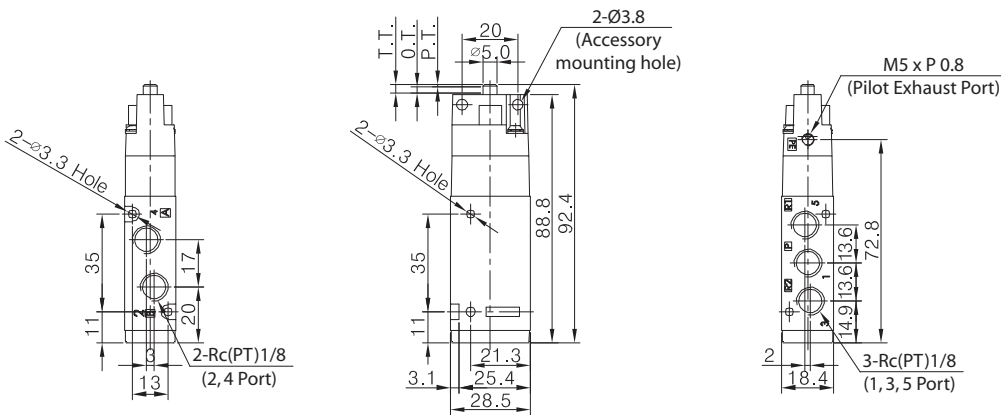
Structure



Part no.	Parts	Material
1	Cover	AL
2	Body	AL
3	Spool	AL
4	Piston	POM
5	Head Cover	Metal
6	Spool Spring	SUS
7	Spool I-Ring	NBR
8	Pilot	AL
9	Packing	NBR
10	Stem	Metal

Dimensions

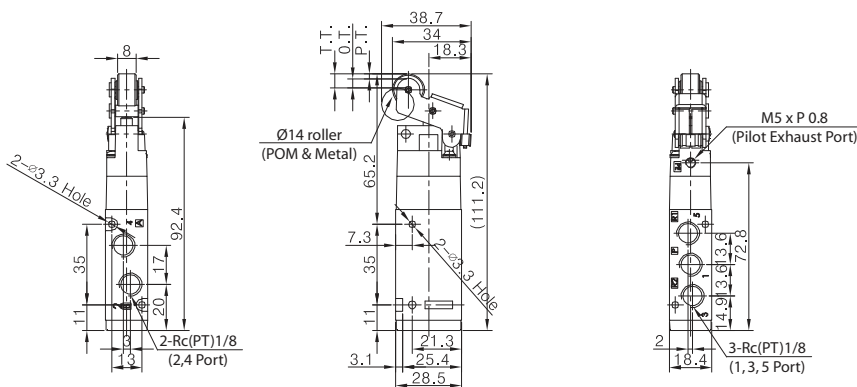
Standard KVM 210-01-00



※ At 5kgf/cm²

F.O.F.	1.6kgf
P.T.	1.0mm
O.T.	2.0mm
T.T.	3.0mm

Roller Lever KVM 210-01-01, KVM 210-01-01S

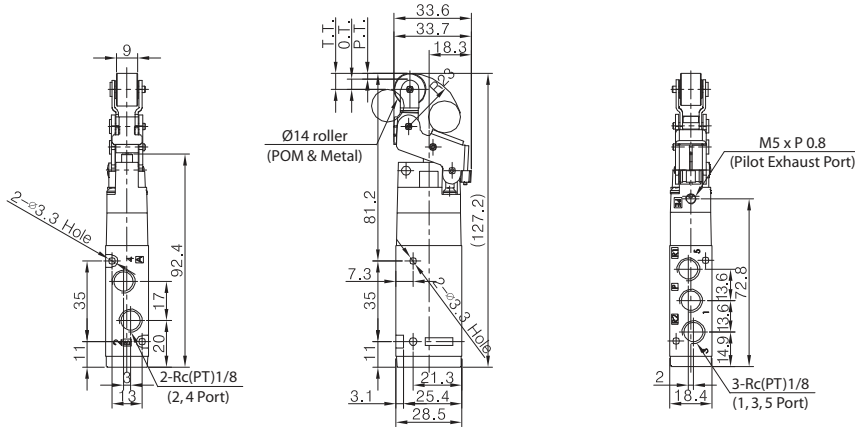


※ At 5kgf/cm²

F.O.F.	0.8kgf
P.T.	2.2mm
O.T.	4.0mm
T.T.	6.2mm

Dimensions

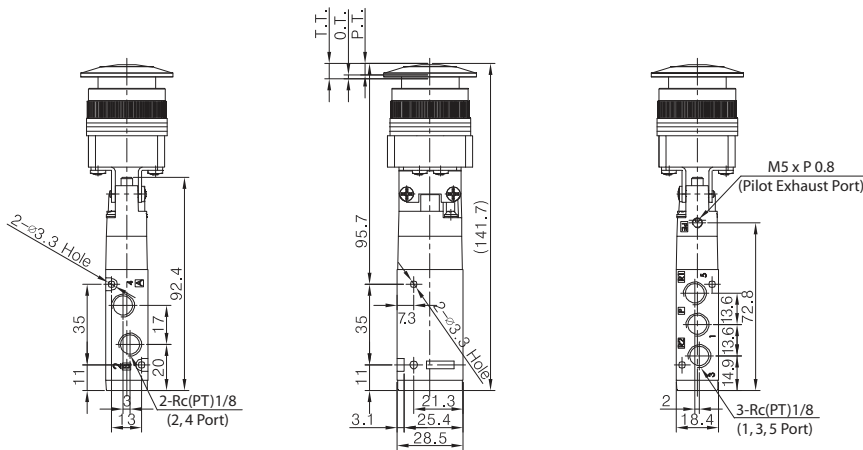
One-way Lever KVM 210-01-02, KVM 210-01-02S



※ At 5kgf/cm²

F.O.F.	0.7kgf
P.T.	2.4mm
O.T.	4.6mm
T.T.	7.0mm

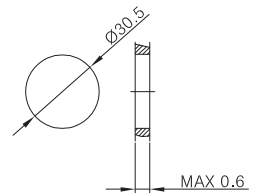
Push Button KVM 210-01-30



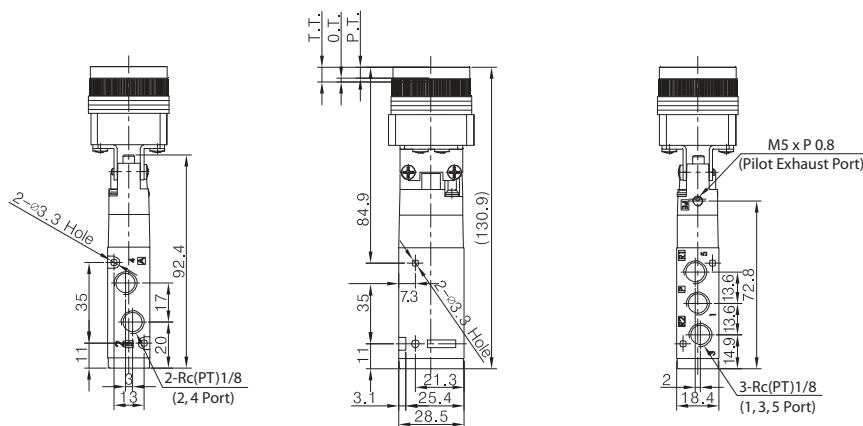
※ At 5kgf/cm²

F.O.F.	2.1kgf
P.T.	4.8mm
O.T.	1.7mm
T.T.	6.5mm

Panel Mounting Hole



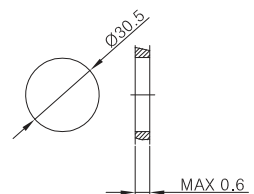
Push Button (Flat type) KVM 210-01-33



※ At 5kgf/cm²

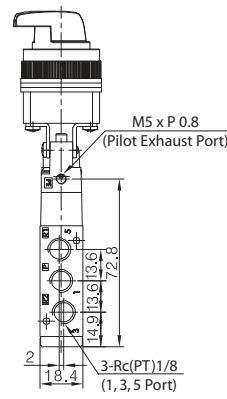
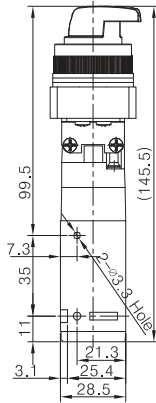
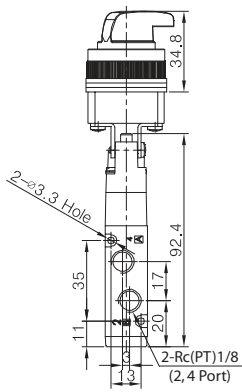
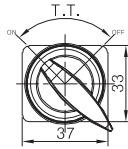
F.O.F.	2.1kgf
P.T.	4.8mm
O.T.	1.7mm
T.T.	6.5mm

Panel Mounting Hole



Dimensions

Selector KVM 210-01-34



※ At 5kgf/cm²

F.O.F.	2.3kgf
T.T.	90°C

Panel Mounting Hole

