

# TH series



### Features

- Specially designed air pulse type for dust collectors
- High flow, long life span

### How to Order

TH - ① ② ③ - ④ - ⑤ - ⑥

4
8
25
C
226

#### ① Series

TH	Pulse valve
----	-------------

#### ② (Operation type)

4	(Solenoid integrated type)
5	Remote pilot (separate type)





#### ③ Pilot

4	Double
8	Single

#### ④ Port size

20	2cm, 3/4"
25	2.5cm, 1"
30	3cm, 1.25"
40	4cm, 1.5"
50	5cm, 2"
60	6cm, 2.5"
75	7.5cm, 3"

#### ⑤ Port type

B		Screw (Elbow type)
C		Coupling
F		Flange
S		Screw (Straight type)

#### ⑥ Coil voltage

010	DC12V
020	DC24V
040	DC48V
105	AC100V/50Hz
115	AC110V/50Hz
116	AC110V/60Hz
126	AC120V/60Hz
205	AC200V/50Hz
225	AC220V/50Hz
226	AC220V/60Hz
235	AC230V/50Hz
245	AC240V/50Hz
246	AC240V/60Hz
266	AC260V/60Hz

※ Only solenoid integrated type.

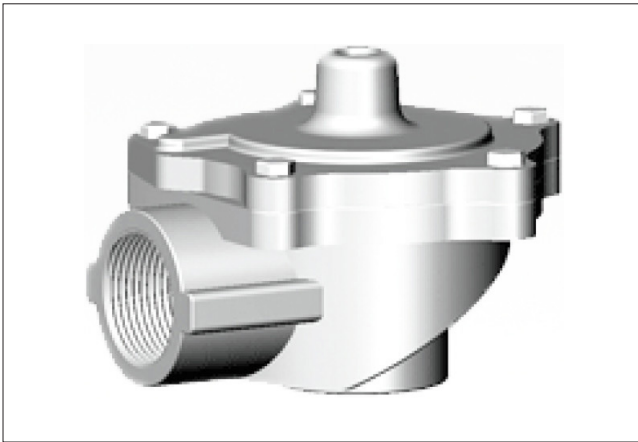
### Specifications

	Solenoid integrated type	Remote pilot type		Solenoid integrated type	Remote pilot type
Fluid	Air, Inert gas		Body	Die-cast aluminum	
Fluid temp.	Max. 110°C		Coil insulation	Class E	-
Ambient temp.	Max. 100°C		Coil material	(Epoxy mold)	-
Design Pressure	10.5kgf/cm <sup>2</sup>		Terminal connection	DIN socket	-

**Specifications**

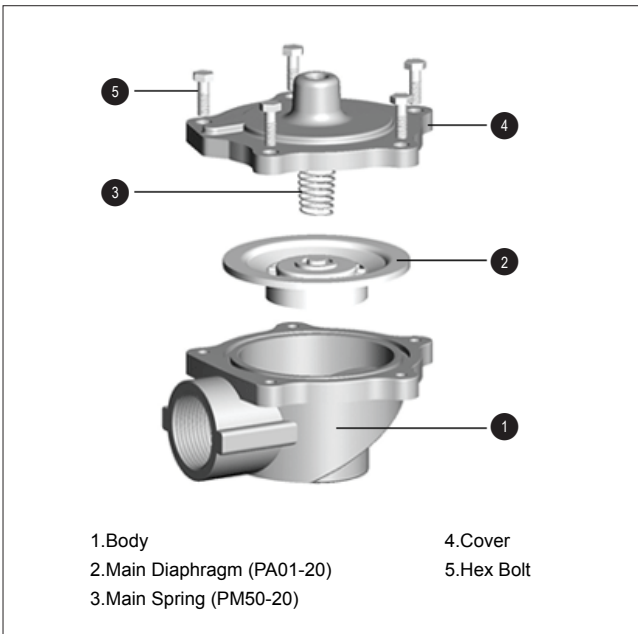
Model	Port size	Pilot port Rc(PT)	Port type	Pilot	Operation type	Max. Operating pressure	Cv Factor	Diaphragm	Weight
TH-5820-B	3/4"	1/4"	Screw	Single	Remote pilot	7.5kgf/cm <sup>2</sup>	10.5	Elastomer	340g
TH-5820-C		1/4"	Coupling	Single		7.5kgf/cm <sup>2</sup>		Elastomer	555g
TH-4820-B		-	Screw	Single	Solenoid integrated type	9.5kgf/cm <sup>2</sup>		Elastomer	695g
TH-4820-C		-	Coupling	Single		9.5kgf/cm <sup>2</sup>		Elastomer	955g
TH-5825-B	1"	1/4"	Screw	Single	Remote pilot	7.5kgf/cm <sup>2</sup>	18.7	Elastomer	460g
TH-5825-C		1/4"	Coupling	Single		7.5kgf/cm <sup>2</sup>		Elastomer	865g
TH-4825-B		-	Screw	Single	Solenoid integrated type	9.5kgf/cm <sup>2</sup>		Elastomer	855g
TH-4825-C		-	Coupling	Single		9.5kgf/cm <sup>2</sup>		Elastomer	1290g
TH-5830-B	1 1/4"	1/4"	Screw	Single	Remote pilot	7.5kgf/cm <sup>2</sup>	46.5	Elastomer	795g
TH-5430-B		1/4"	Screw	Double		8.5kgf/cm <sup>2</sup>		Elastomer	960g
TH-4830-B		-	Screw	Single	Solenoid integrated type	9.5kgf/cm <sup>2</sup>		Elastomer	1140g
TH-4430-B		-	Screw	Double		9.8kgf/cm <sup>2</sup>		Elastomer	1220g
TH-5840-B	1 1/2"	1/4"	Screw	Single	Remote pilot	7.5kgf/cm <sup>2</sup>	53.9	Elastomer	925g
TH-5840-C		1/4"	Coupling	Single		7.5kgf/cm <sup>2</sup>		Elastomer	1670g
TH-5840-F		1/4"	Flange	Single		7.5kgf/cm <sup>2</sup>	39.0	Elastomer	920g
TH-5440-B		1/4"	Screw	Double		8.5kgf/cm <sup>2</sup>	53.9	Elastomer	1040g
TH-5440-C		1/4"	Coupling	Double	8.5kgf/cm <sup>2</sup>	Elastomer		1770g	
TH-4840-B		-	Screw	Single	Solenoid integrated type	9.5kgf/cm <sup>2</sup>	53.9	Elastomer	1315g
TH-4840-C		-	Coupling	Single		9.5kgf/cm <sup>2</sup>		Elastomer	2030g
TH-4840-F		Inlet 1 1/2" Outlet 1"	-	Inlet Flange Outlet coupling	Single	9.5kgf/cm <sup>2</sup>	39.0	Elastomer	1260g
TH-4440-B	1 1/2"	-	Screw	Double	Solenoid integrated type	9.8kgf/cm <sup>2</sup>	53.9	Elastomer	1395g
TH-4440-C		-	Coupling	Double		9.8kgf/cm <sup>2</sup>		Elastomer	2110g
TH-5850-F	Inlet 2" Outlet 1 1/2"	1/4"	Inlet Flange Outlet coupling	Single	Remote pilot	7.5kgf/cm <sup>2</sup>	68.5	Elastomer	1705g
TH-5450-F	Inlet 2" Outlet 1 1/2"	1/4"	Inlet Flange Outlet coupling	Double		8.5kgf/cm <sup>2</sup>		Elastomer	1790g
TH-5450-B	2"	1/4"	Screw	Double		8.5kgf/cm <sup>2</sup>		74.2	Elastomer
TH-4850-F	Inlet 2" Outlet 1 1/2"	-	Inlet Flange Outlet coupling	Single	Solenoid integrated type	9.5kgf/cm <sup>2</sup>	68.5	Elastomer	2065g
TH-4450-F	Inlet 2" Outlet 1 1/2"	-	Inlet Flange Outlet coupling	Double		9.8kgf/cm <sup>2</sup>		Elastomer	2120g
TH-4450-B	2"	-	Screw	Double		9.8kgf/cm <sup>2</sup>		74.2	Elastomer
TH-4460-S	2 1/2"	-	Screw (Straight type)	Double	Solenoid integrated type	9.8kgf/cm <sup>2</sup>	110.0	NBR	4730g
TH-5475-B	3"	1/4"	Screw	Double	Remote pilot	8.5kgf/cm <sup>2</sup>	142.0	NBR	3505g
TH-4475-B		-	Screw	Double	Solenoid integrated type	9.8kgf/cm <sup>2</sup>		NBR	3825g

**TH-5820-B(Single, Remote pilot, Screw)**



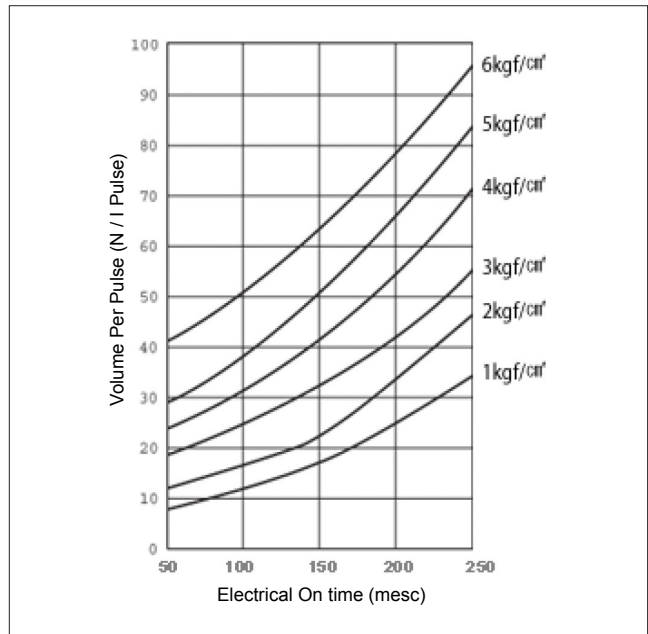
Fluid	Air, Inert gas
Valve function	Nomally close
Port size(inlet/outlet)	Rc(PT) 3/4"
Cv Flow Factor	10.5
Valve body	Die-cast aluminum
Fluid temperature	Max. 110°C
Ambient temperature	Max. 100°C
Pilot air	Single
Port type	Screw
Diaphragm	Elastomer
Design pressure	10.5kgf/cm <sup>2</sup>
Max.operating pressure	7.5kgf/cm <sup>2</sup>
Weight	340g

**Construction**

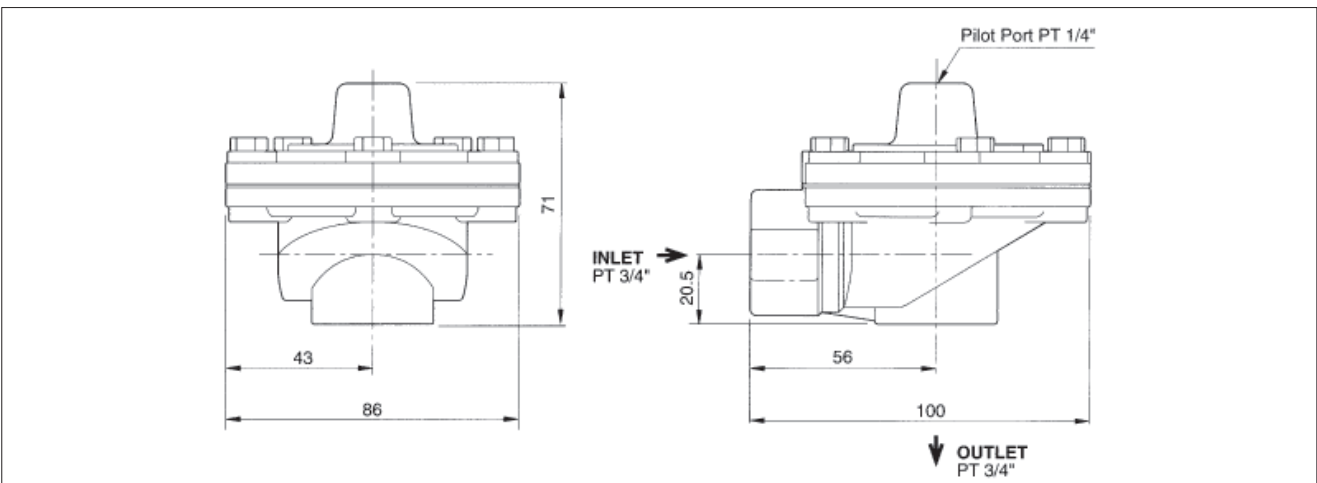


※ Maintenance parts - SPK1: Diaphragm kit(Parts no:2+3)

**Air Consumption**



**Dimensions**

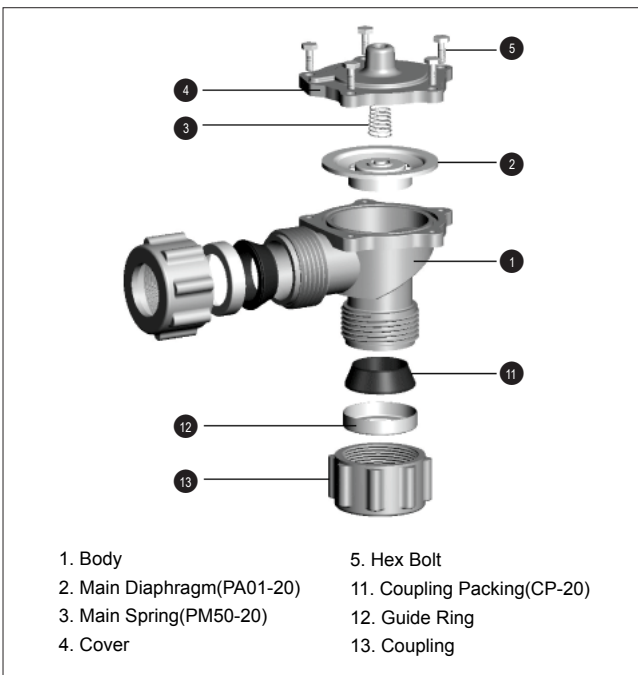


**TH-5820-C(Single, Remote pilot, Coupling)**



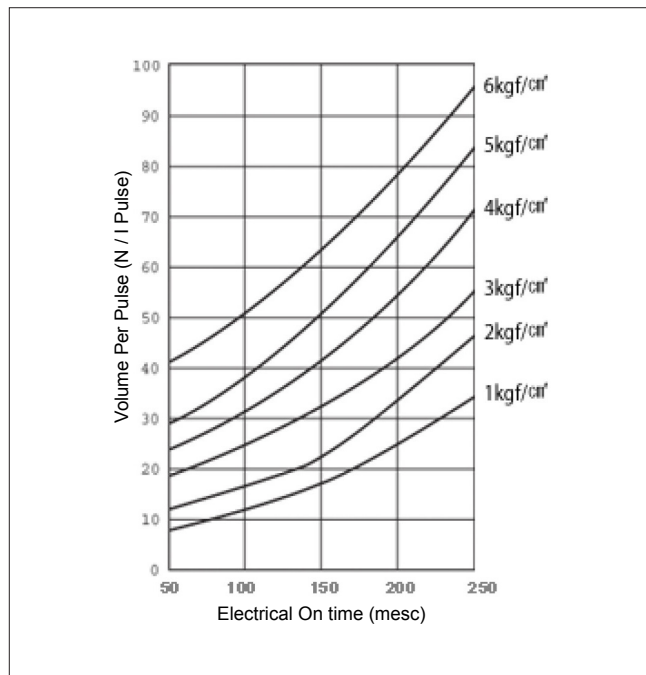
Fluid	Air, Inert gas
Valve function	Nomally close
Port size(inlet/outlet)	Rc(PT) 3/4"
Cv Flow Factor	10.5
Valve body	Die-cast aluminum
Fluid temperature	Max. 110°C
Ambient temperature	Max. 100°C
Pilot Air	Single
Port type	Coupling
Diaphragm	Elastomer
Design pressure	10.5kgf/cm <sup>2</sup>
Max.operating pressure	7.5kgf/cm <sup>2</sup>
Weight	555g

**Construction**

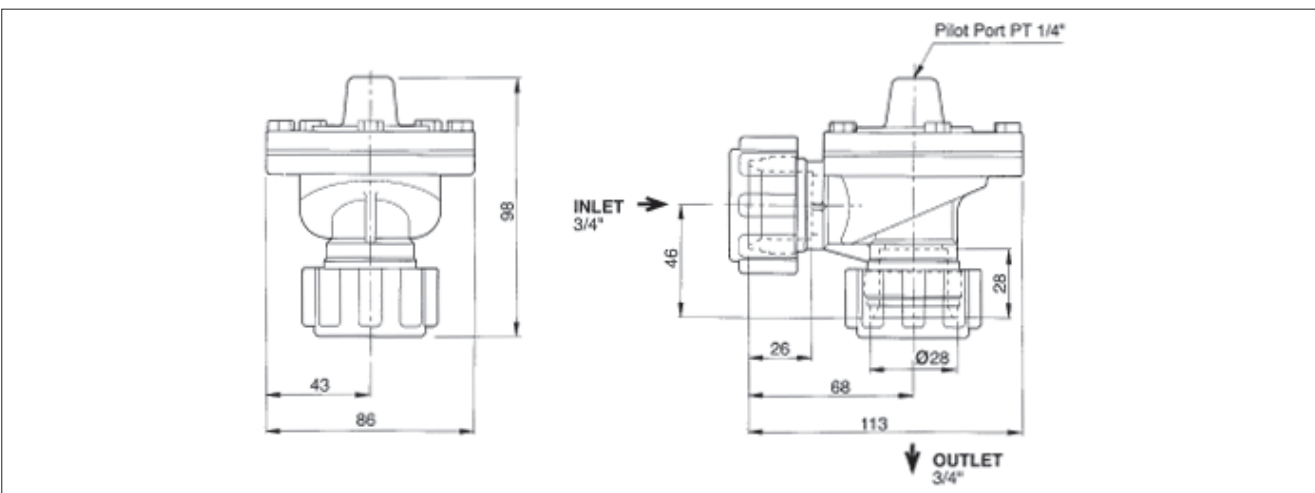


※ Maintenance parts - SPK1: Diaphragm kit(Parts no:2+3)

**Air Consumption**



**Dimensions**

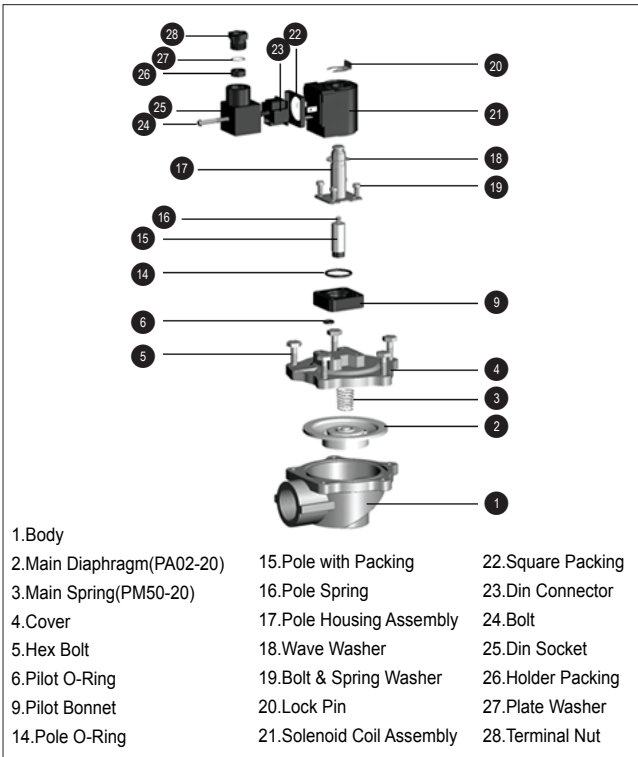


**TH-4820-B(Single, Solenoid integrated, Screw)**

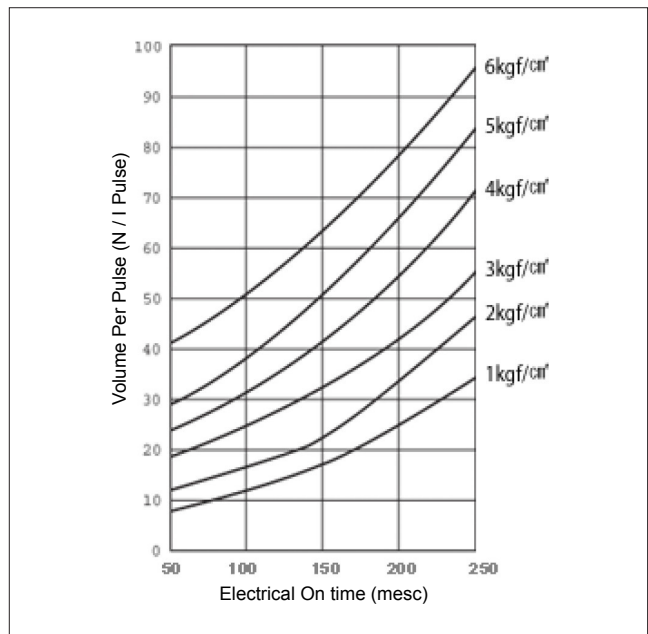


Fluid	Air, Inert gas
Valve function	Nomally close
Port size(inlet/outlet)	Rc(PT) 3/4"
Cv Flow Factor	10.5
Valve body	Die-cast aluminum
Fluid temperature	Max. 110°C
Ambient temperature	Max. 100°C
Pilot Air	Single
Port type	Screw
Diaphragm	Elastomer
Design pressure	10.5kgf/cm <sup>2</sup>
Max.operating pressure	9.5kgf/cm <sup>2</sup>
Weight	695g

**Construction**

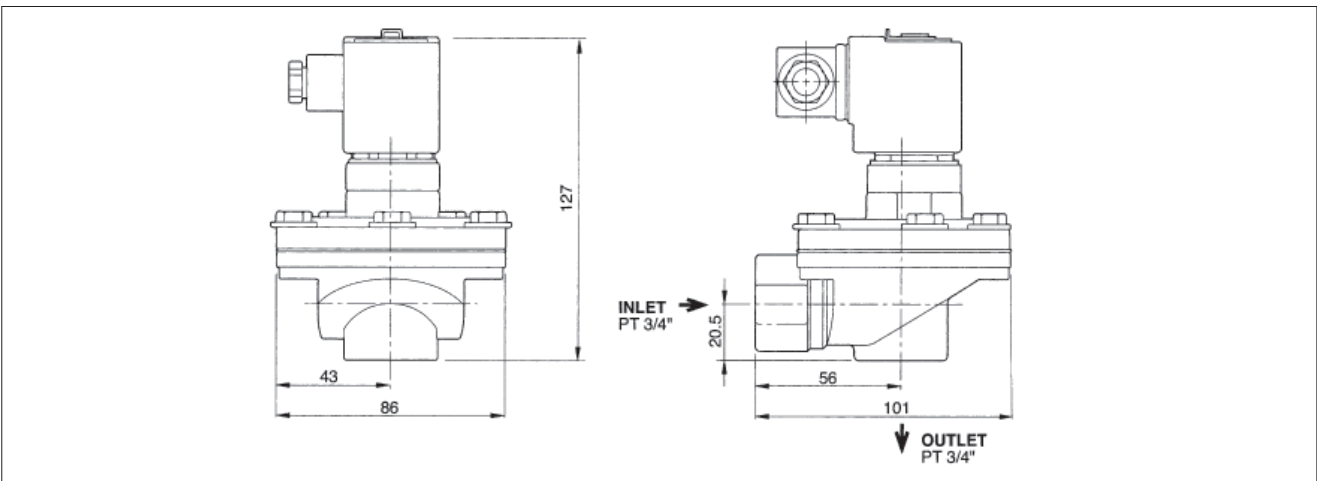


**Air Consumption**



※ Maintenance parts - SPK1: Diaphragm kit(Parts no:2+3), SPK2: Pilot air tube kit(Parts no:14+15+16+17)

**Dimensions**

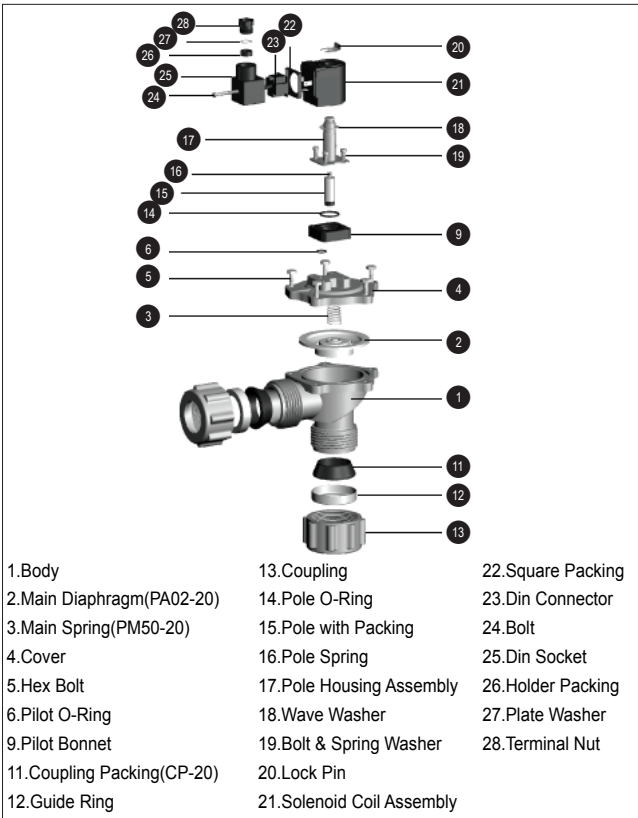


**TH-4820-C(Single, Solenoid integrated, Coupling)**



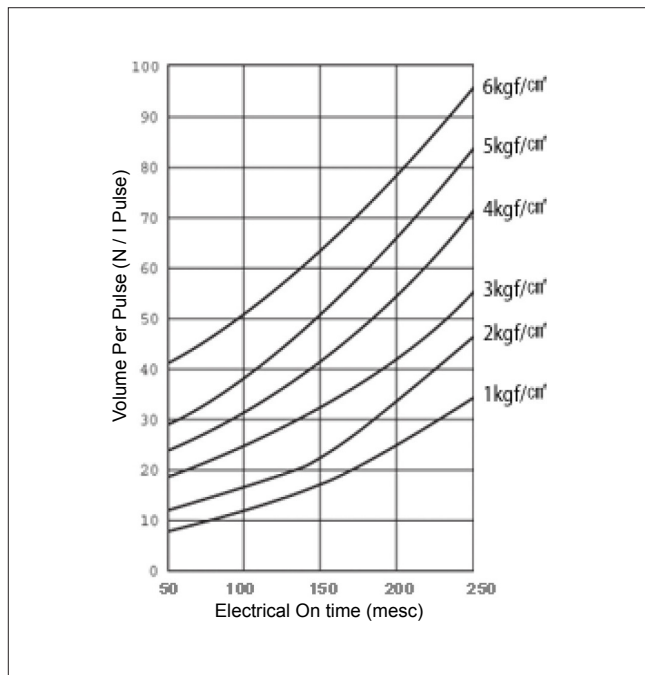
Fluid	Air, Inert gas
Valve function	Nomally close
Port size(inlet/outlet)	Rc(PT) 3/4"
Cv Flow Factor	10.5
Valve body	Die-cast aluminum
Fluid temperature	Max. 110°C
Ambient temperature	Max. 100°C
Pilot Air	Single
Port type	Coupling
Diaphragm	Elastomer
Design pressure	10.5kgf/cm <sup>2</sup>
Max.operating pressure	9.5kgf/cm <sup>2</sup>
Weight	955g

**Construction**

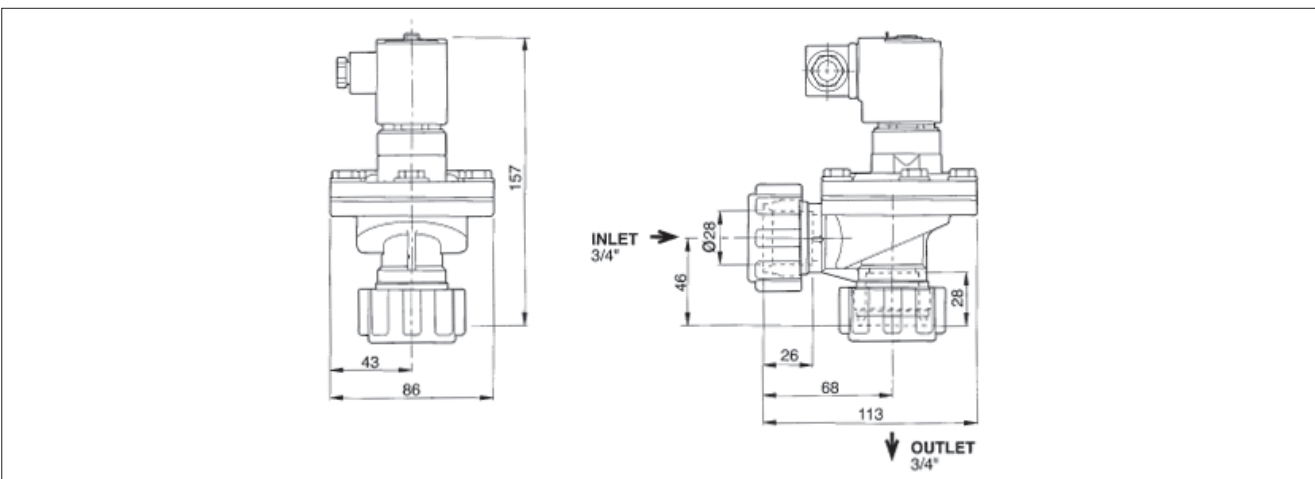


※ Maintenance parts - SPK1: Diaphragm kit(Parts no:2+3), SPK2: Pilot air tube kit(Parts no:14+15+16+17)

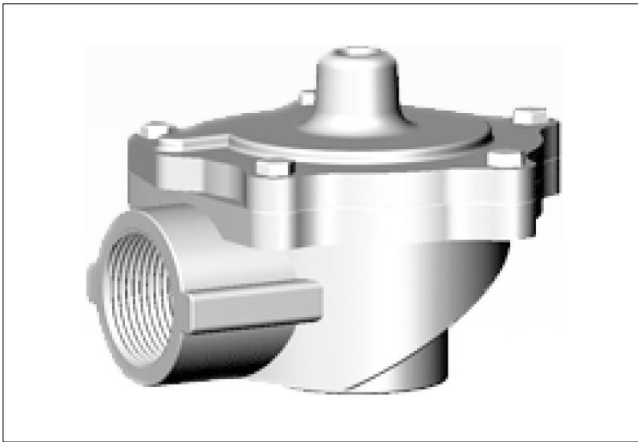
**Air Consumption**



**Dimensions**

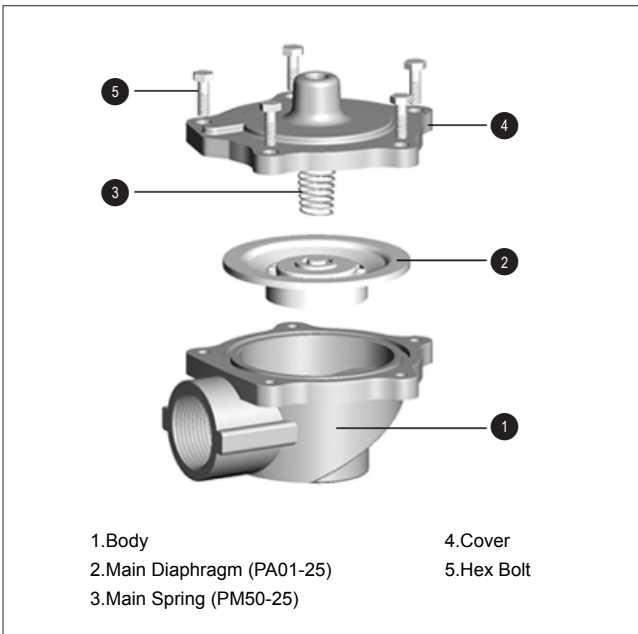


**TH-5825-B(Single, Remote pilot, Screw)**



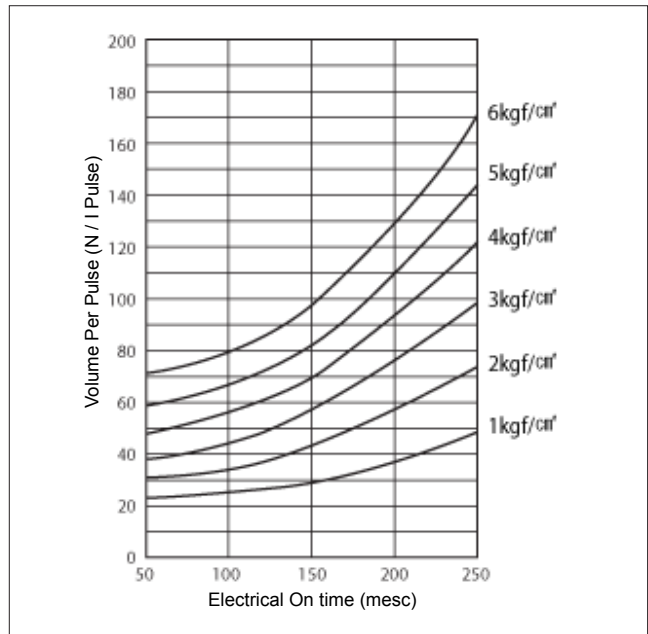
Fluid	Air, Inert gas
Valve function	Nomally close
Port size(inlet/outlet)	Rc(PT) 1"
Cv Flow Factor	18.7
Valve body	Die-cast aluminum
Fluid temperature	Max. 110°C
Ambient temperature	Max. 100°C
Pilot Air	Single
Port type	Screw
Diaphragm	Elastomer
Design pressure	10.5kgf/cm <sup>2</sup>
Max.operating pressure	7.5kgf/cm <sup>2</sup>
Weight	460g

**Construction**

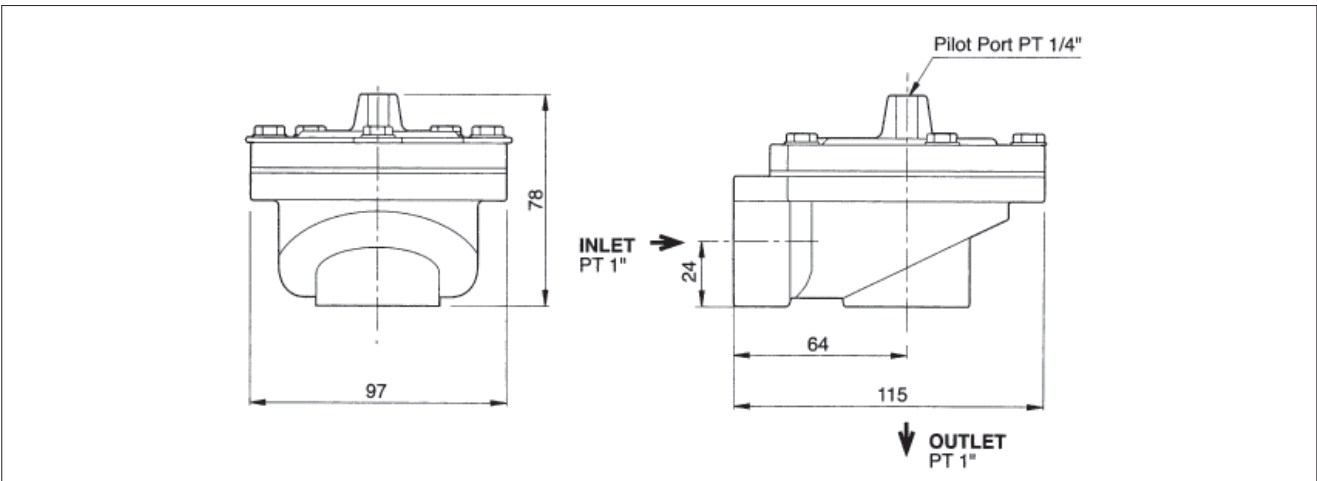


※ Maintenance parts - SPK1: Diaphragm kit(Parts no:2+3)

**Air Consumption**



**Dimensions**



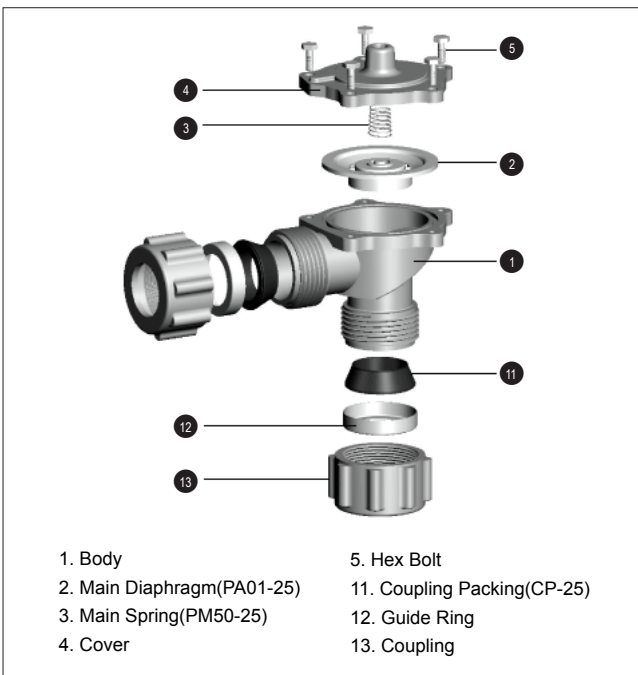


**TH-5825-C(Single, Remote pilot, Coupling)**



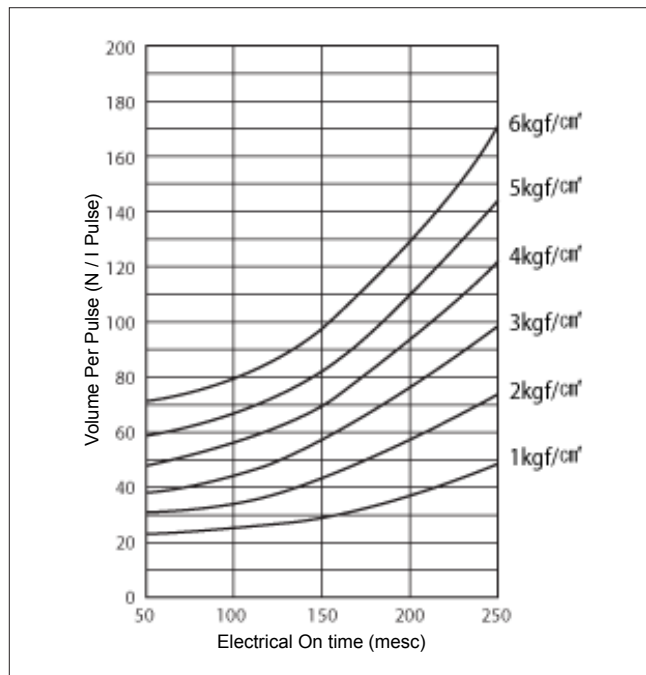
Fluid	Air, Inert gas
Valve function	Nomally close
Port size(inlet/outlet)	Rc(PT) 1"
Cv Flow Factor	18.7
Valve body	Die-cast aluminum
Fluid temperature	Max. 110°C
Ambient temperature	Max. 100°C
Pilot Air	Single
Port type	Coupling
Diaphragm	Elastomer
Design pressure	10.5kgf/cm <sup>2</sup>
Max.operating pressure	7.5kgf/cm <sup>2</sup>
Weight	865g

**Construction**

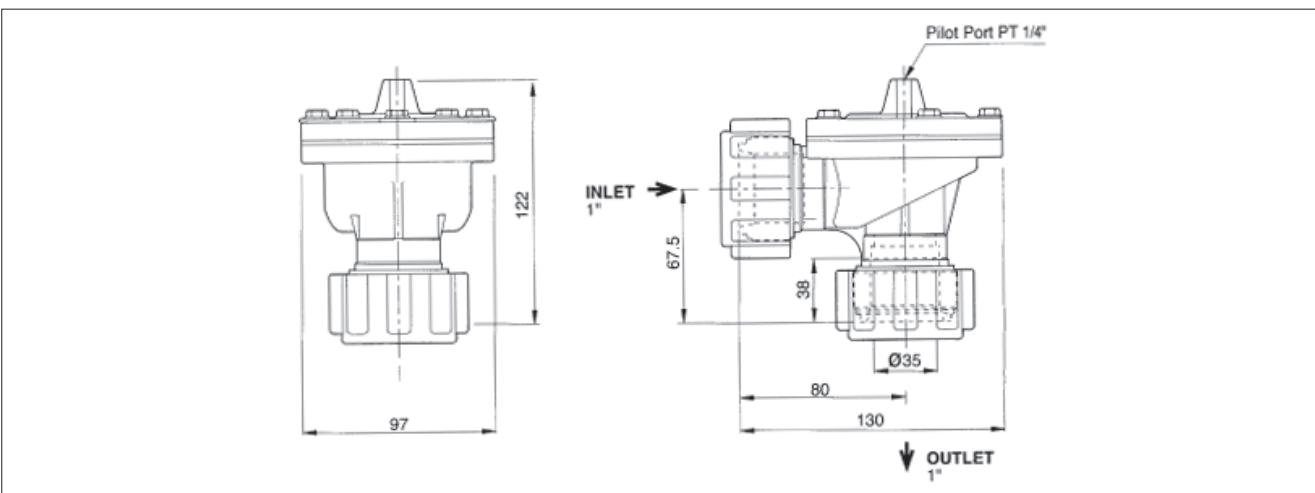


※ Maintenance parts - SPK1: Diaphragm kit(Parts no:2+3)

**Air Consumption**

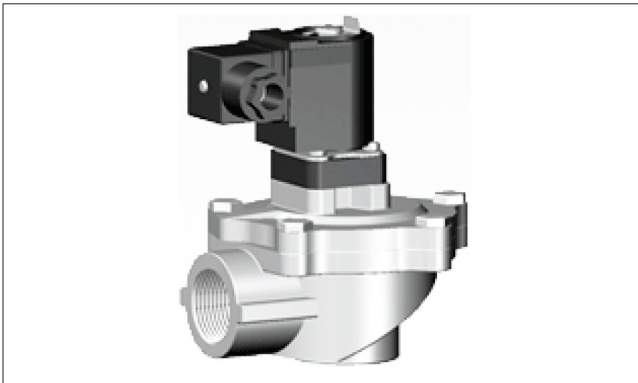


**Dimensions**



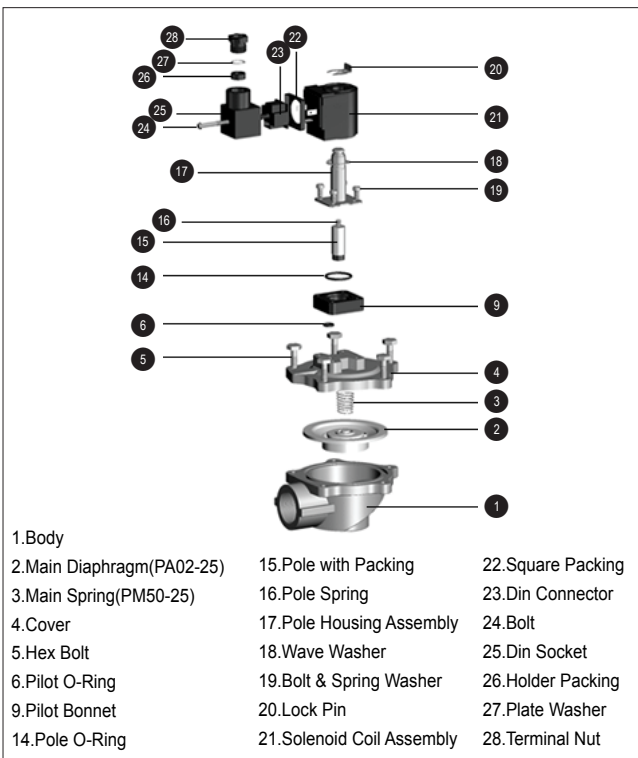


**TH-4825-B(Single, Solenoid integrated, Screw)**



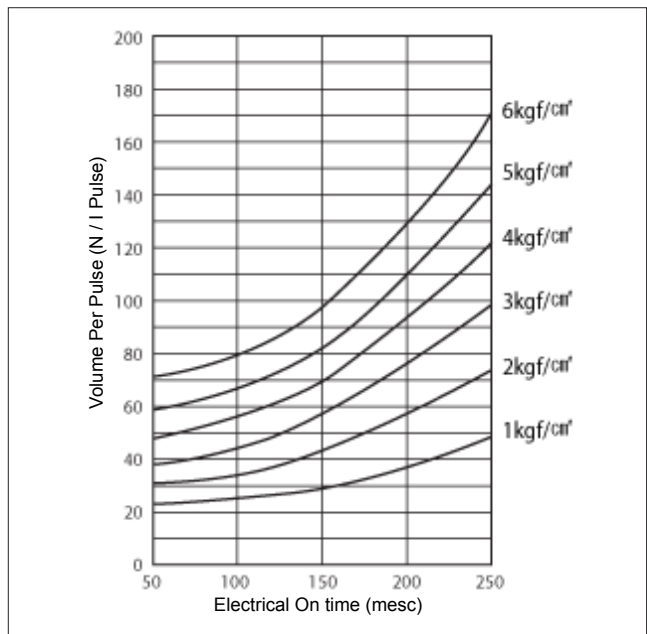
Fluid	Air, Inert gas
Valve function	Nomally close
Port size(inlet/outlet)	Rc(PT) 1"
Cv Flow Factor	18.7
Valve body	Die-cast aluminum
Fluid temperature	Max. 110°C
Ambient temperature	Max. 100°C
Pilot Air	Single
Port type	Screw
Diaphragm	Elastomer
Design pressure	10.5kgf/cm <sup>2</sup>
Max.operating pressure	9.5kgf/cm <sup>2</sup>
Weight	855g

**Construction**

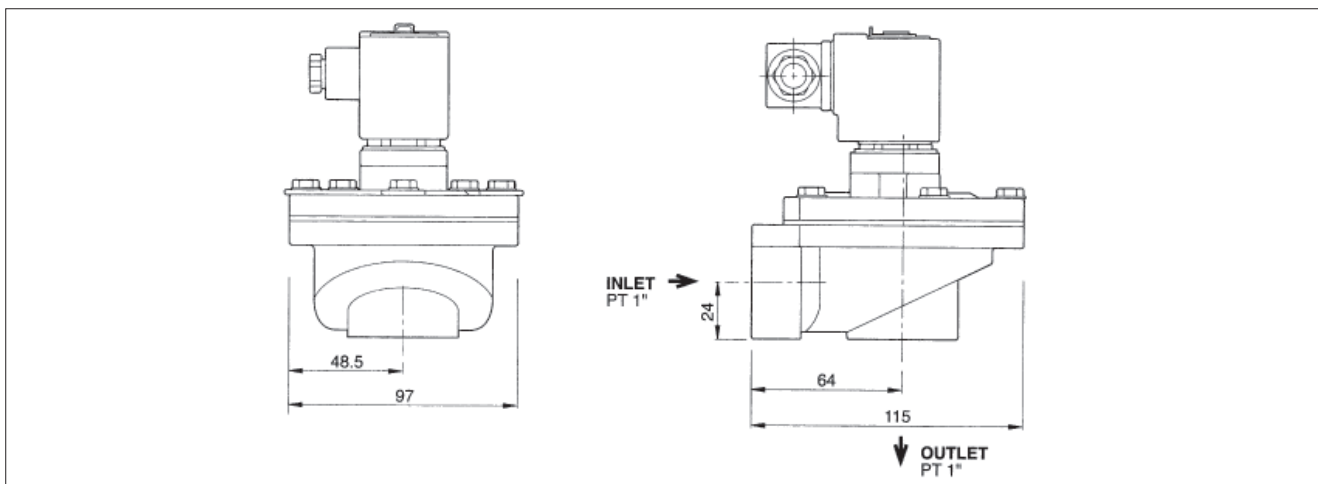


※ Maintenance parts - SPK1: Diaphragm kit(Parts no:2+3), SPK2: Pilot air tube kit(Parts no:14+15+16+17)

**Air Consumption**



**Dimensions**

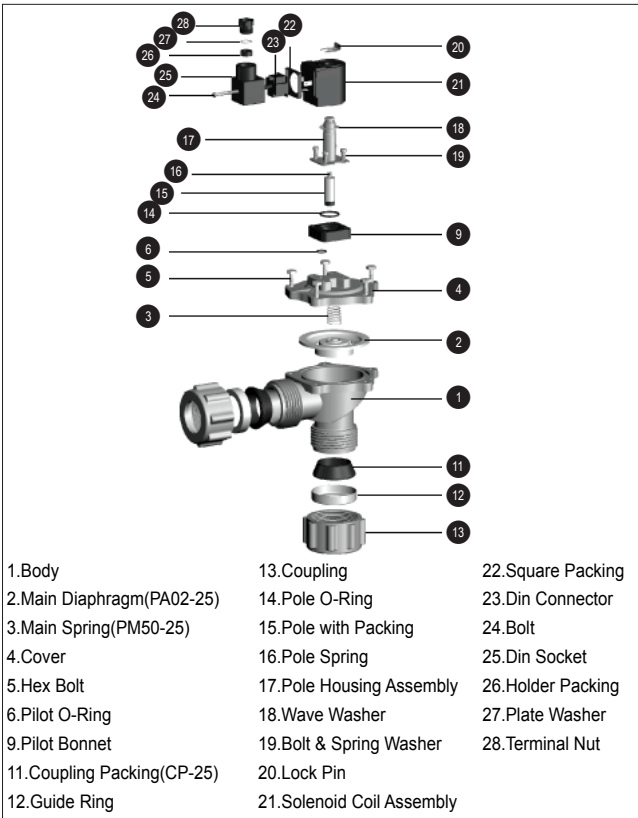


**TH-4825-C(Single, Solenoid integrated, Coupling)**



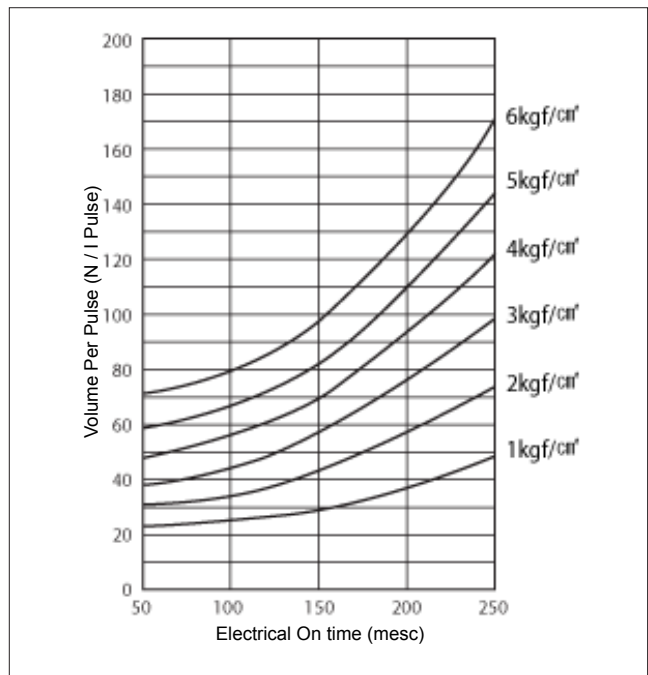
Fluid	Air, Inert gas
Valve function	Nomally close
Port size(inlet/outlet)	Rc(PT) 1"
Cv Flow Factor	18.7
Valve body	Die-cast aluminum
Fluid temperature	Max. 110°C
Ambient temperature	Max. 100°C
Pilot Air	Single
Port type	Coupling
Diaphragm	Elastomer
Design pressure	10.5kgf/cm <sup>2</sup>
Max.operating pressure	9.5kgf/cm <sup>2</sup>
Weight	1290g

**Construction**

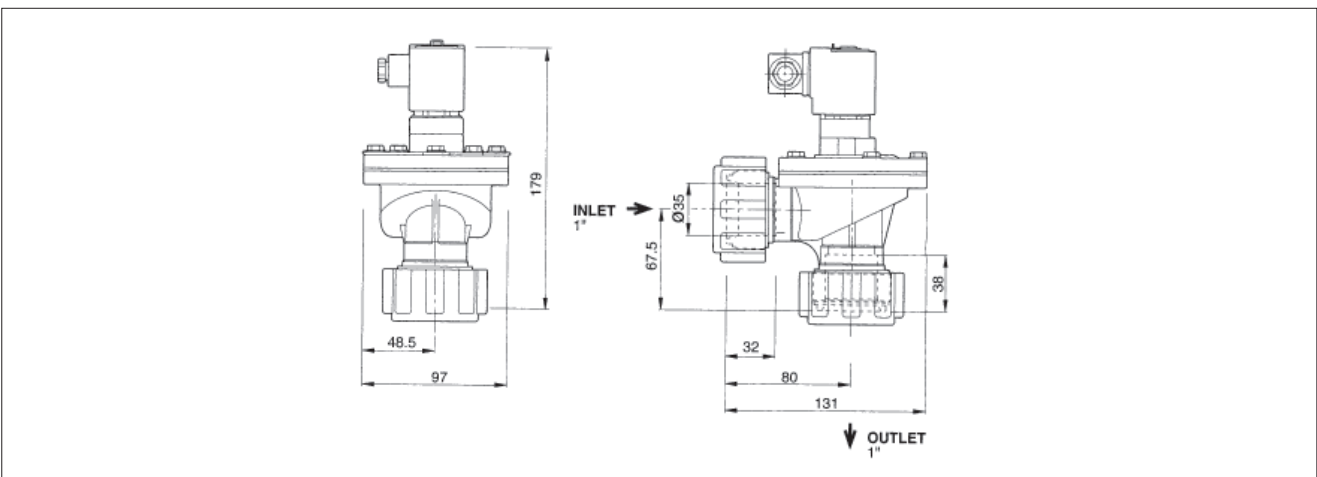


※ Maintenance parts - SPK1: Diaphragm kit(Parts no:2+3), SPK2: Pilot air tube kit(Parts no:14+15+16+17)

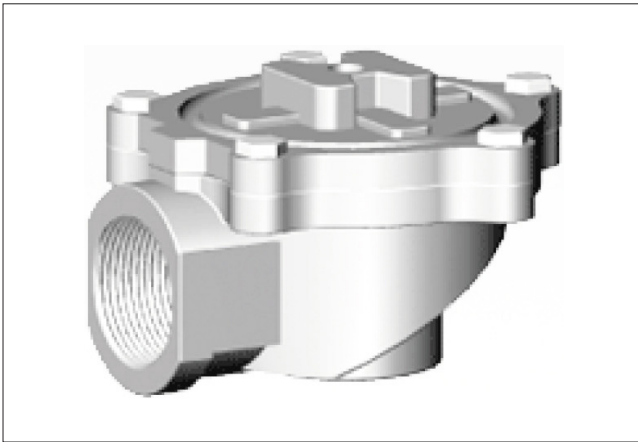
**Air Consumption**



**Dimensions**



**TH-5830-B(Single, Remote pilot, Screw)**

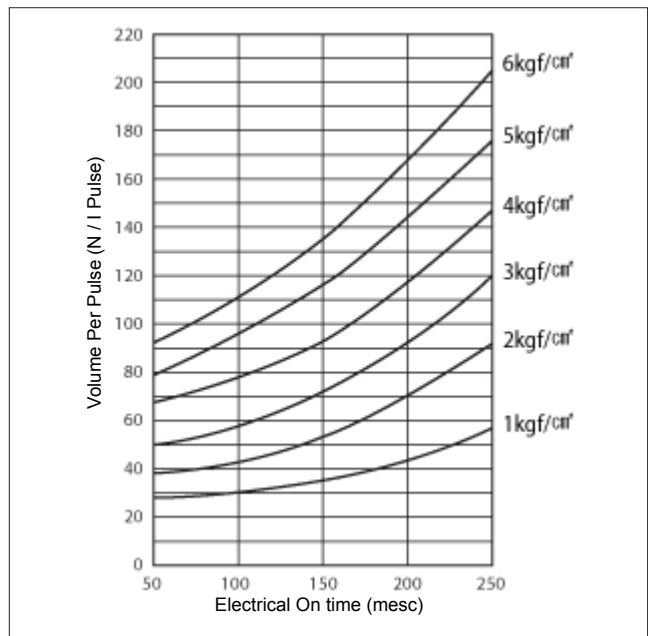


Fluid	Air, Inert gas
Valve function	Nomally close
Port size(inlet/outlet)	Rc(PT) 1 1/4"
Cv Flow Factor	46.5
Valve body	Die-cast aluminum
Fluid temperature	Max. 110°C
Ambient temperature	Max. 100°C
Pilot Air	Single
Port type	Screw
Diaphragm	Elastomer
Design pressure	10.5kgf/cm <sup>2</sup>
Max.operating pressure	7.5kgf/cm <sup>2</sup>
Weight	795g

**Construction**

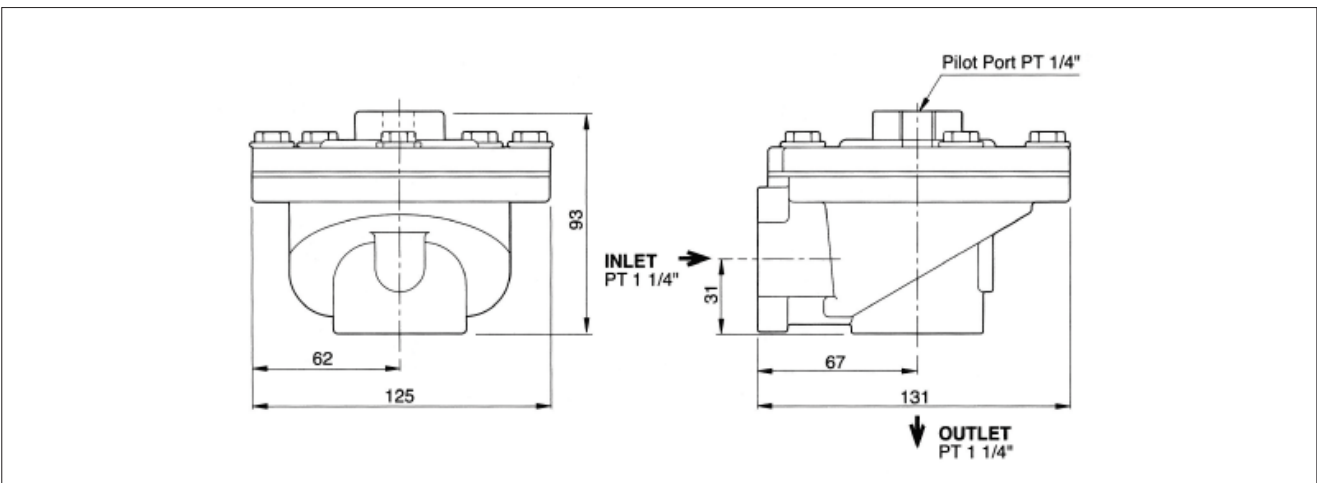


**Air Consumption**



※ Maintenance parts - SPK1: Diaphragm kit(Parts no:2+3)

**Dimensions**

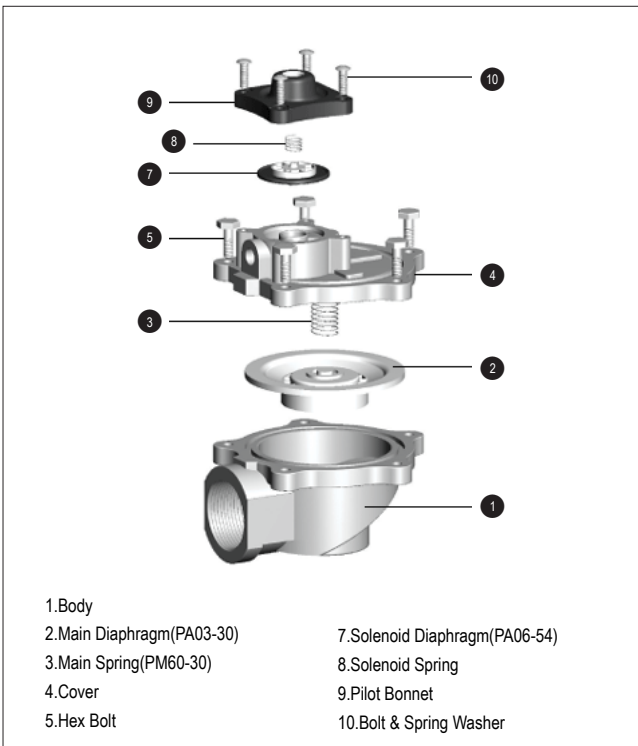


**TH-5430-B(Double, Remote pilot, Screw)**



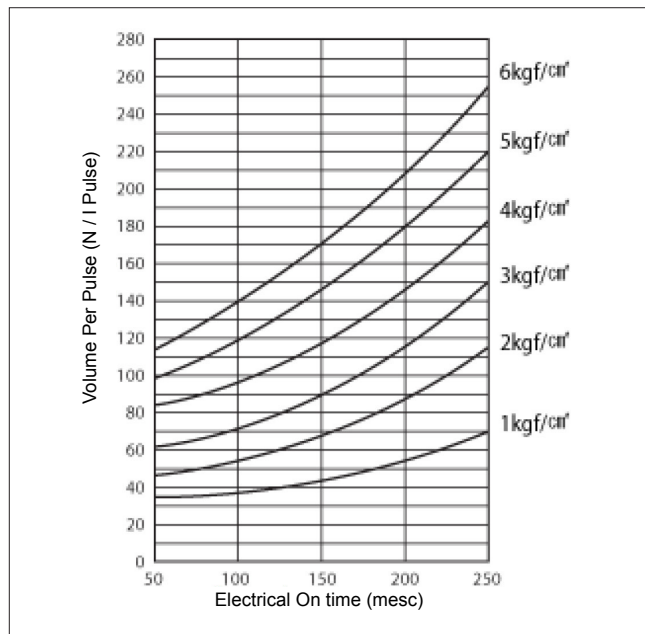
Fluid	Air, Inert gas
Valve function	Nomally close
Port size(inlet/outlet)	Rc(PT) 1 1/4"
Cv Flow Factor	46.5
Valve body	Die-cast aluminum
Fluid temperature	Max. 110°C
Ambient temperature	Max. 100°C
Pilot Air	Double
Port type	Screw
Diaphragm	Elastomer
Design pressure	10.5kgf/cm <sup>2</sup>
Max.operating pressure	7.5kgf/cm <sup>2</sup>
Weight	960g

**Construction**

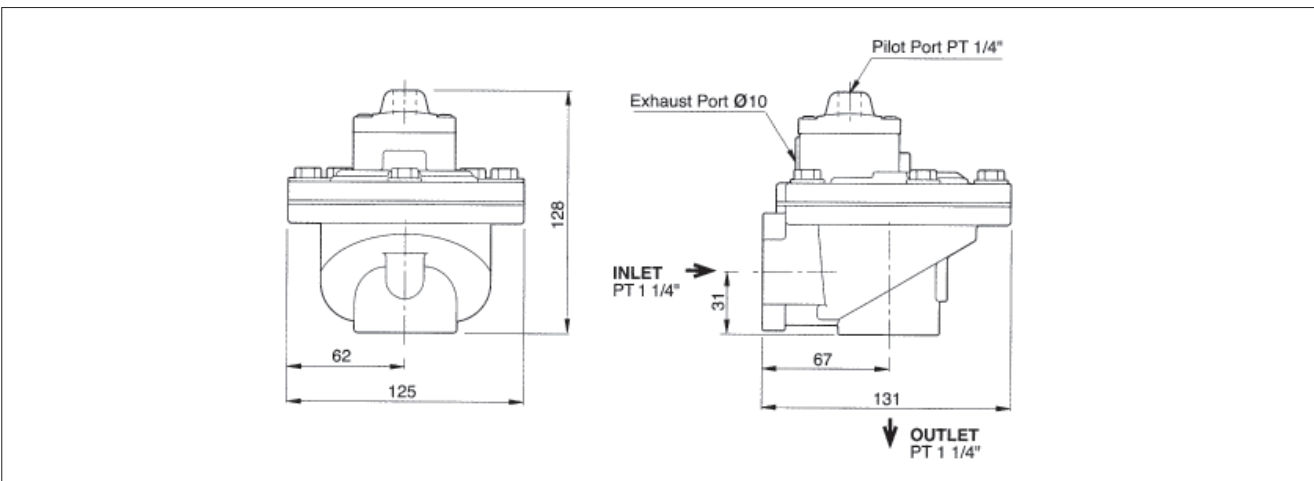


※ Maintenance parts - SPK1: Diaphragm kit(Parts no:2+3+7+8)

**Air Consumption**



**Dimensions**

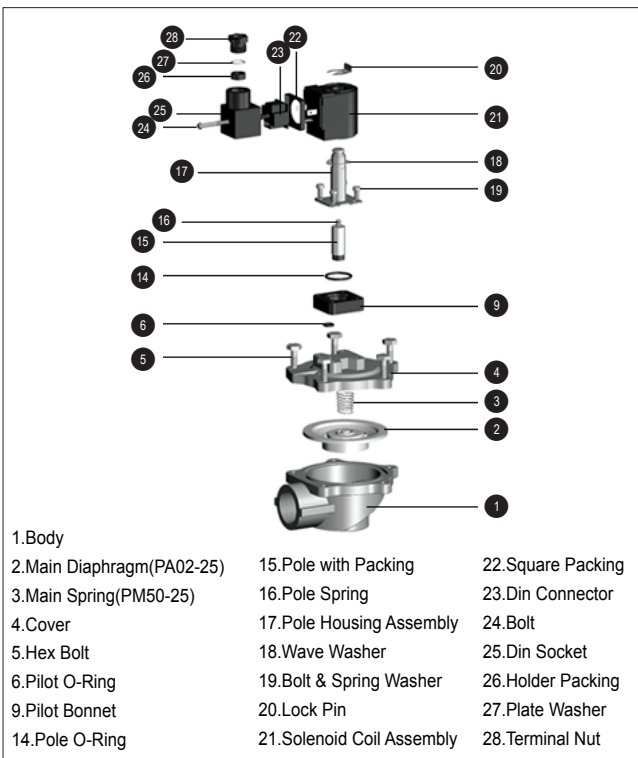


**TH-4830-B(Single, Solenoid integrated, Screw)**



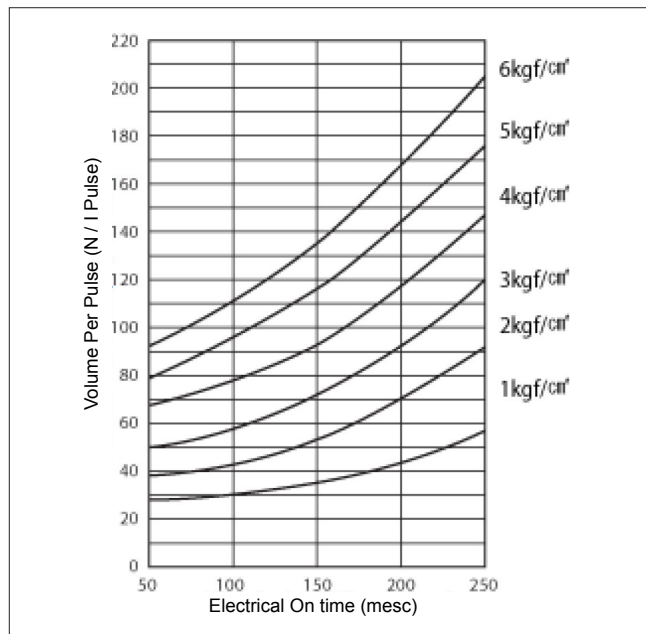
Fluid	Air, Inert gas
Valve function	Nomally close
Port size(inlet/outlet)	Rc(PT) 1 1/4"
Cv Flow Factor	46.5
Valve body	Die-cast aluminum
Fluid temperature	Max. 110°C
Ambient temperature	Max. 100°C
Pilot Air	Single
Port type	Screw
Diaphragm	Elastomer
Design pressure	10.5kgf/cm <sup>2</sup>
Max.operating pressure	9.5kgf/cm <sup>2</sup>
Weight	1140g

**Construction**

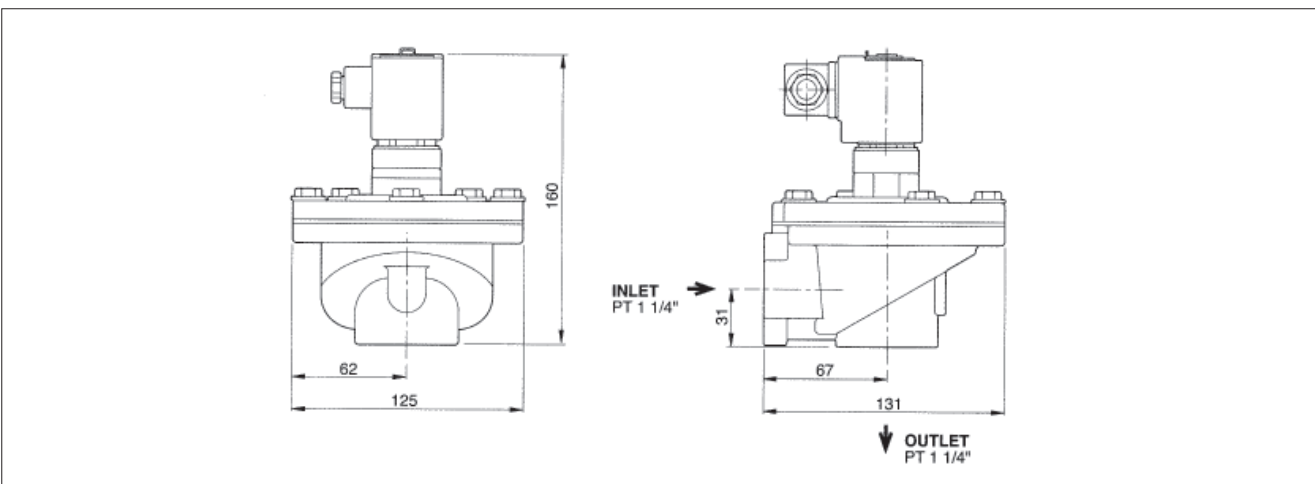


※ Maintenance parts - SPK1: Diaphragm kit(Parts no:2+3), SPK2: Pilot air tube kit(Parts no:14+15+16+17)

**Air Consumption**



**Dimensions**

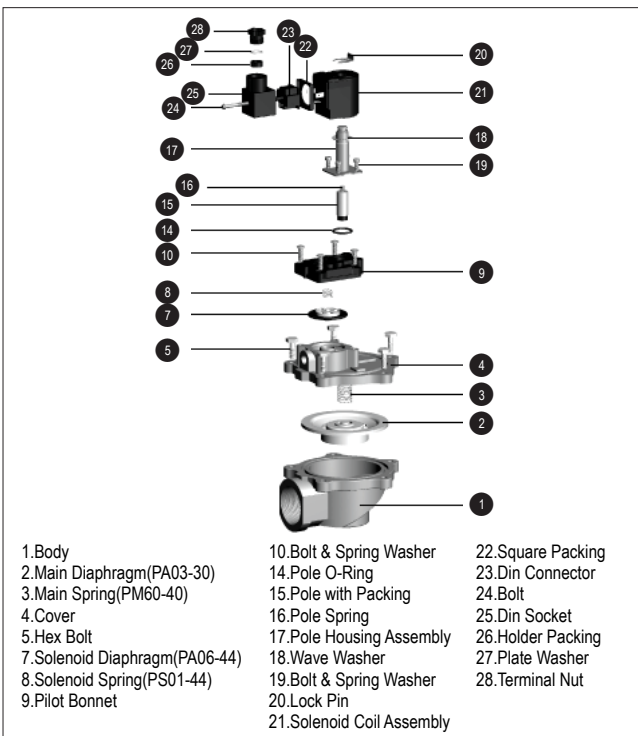


**TH-4430-B(Double, Solenoid integrated, Screw)**

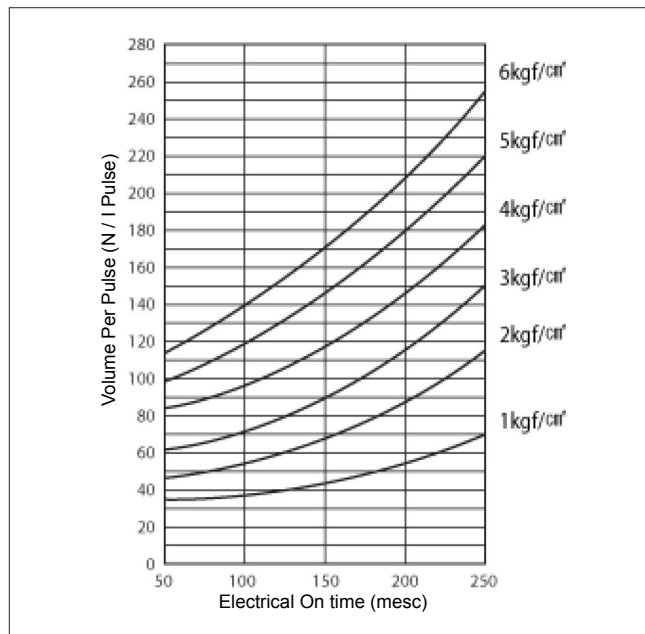


Fluid	Air, Inert gas
Valve function	Nomally close
Port size(inlet/outlet)	Rc(PT) 1 1/4"
Cv Flow Factor	46.5
Valve body	Die-cast aluminum
Fluid temperature	Max. 110°C
Ambient temperature	Max. 100°C
Pilot Air	Double
Port type	Screw
Diaphragm	Elastomer
Design pressure	10.5kgf/cm <sup>2</sup>
Max.operating pressure	9.8kgf/cm <sup>2</sup>
Weight	1220g

**Construction**

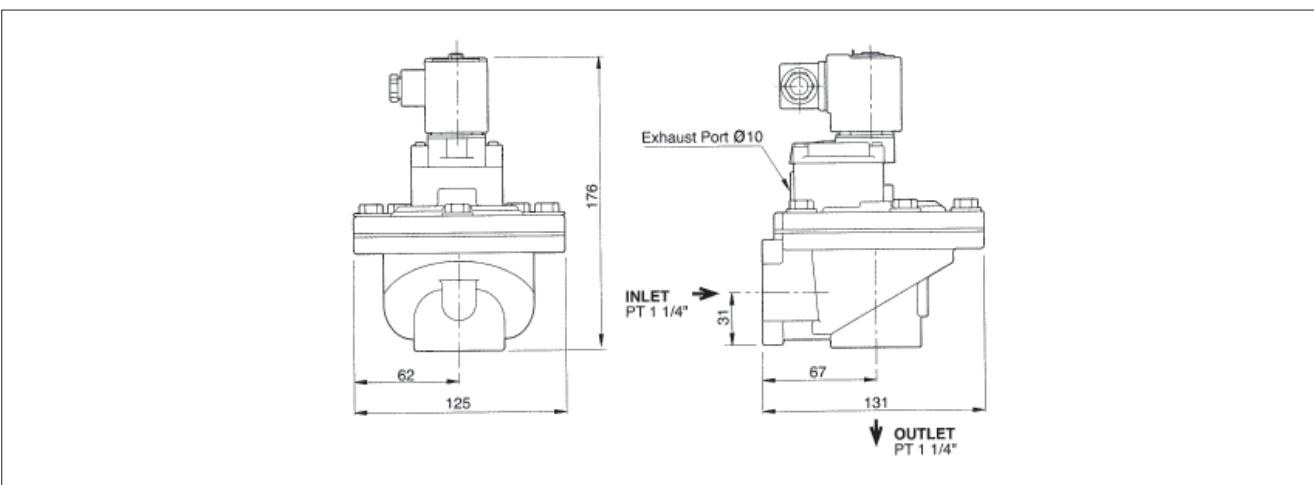


**Air Consumption**



※ Maintenance parts - SPK1: Diaphragm kit(Parts no:2+3+7+8), SPK2: Pilot air tube kit(Parts no:14+15+16+17)

**Dimensions**

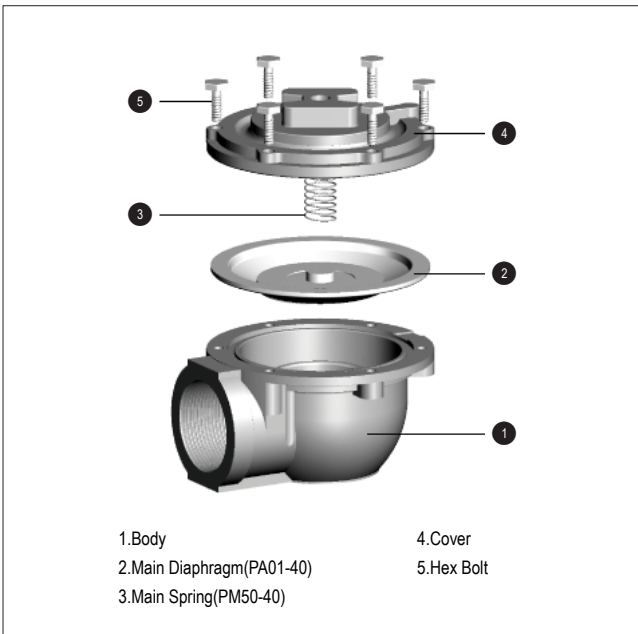


**TH-5840-B(Single, Remote pilot, Screw)**

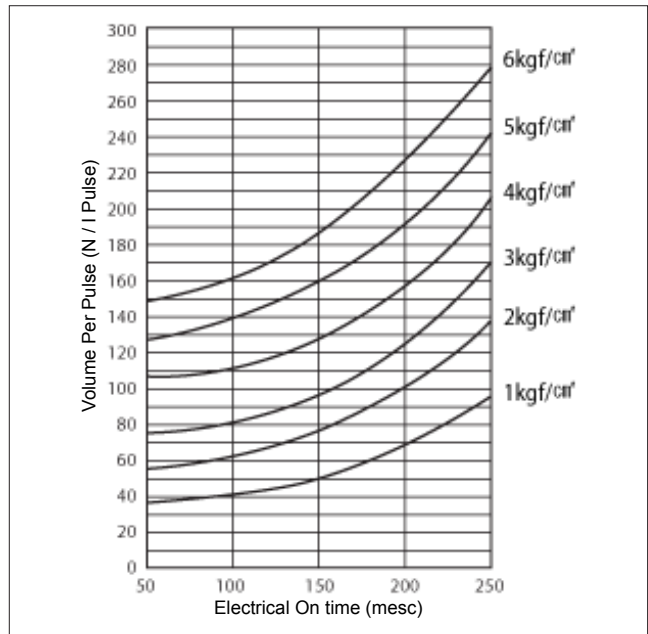


Fluid	Air, Inert gas
Valve function	Nomally close
Port size(inlet/outlet)	Rc(PT) 1 1/2"
Cv Flow Factor	53.9
Valve body	Die-cast aluminum
Fluid temperature	Max. 110°C
Ambient temperature	Max. 100°C
Pilot Air	Single
Port type	Screw
Diaphragm	Elastomer
Design pressure	10.5kgf/cm <sup>2</sup>
Max.operating pressure	7.5kgf/cm <sup>2</sup>
Weight	925g

**Construction**

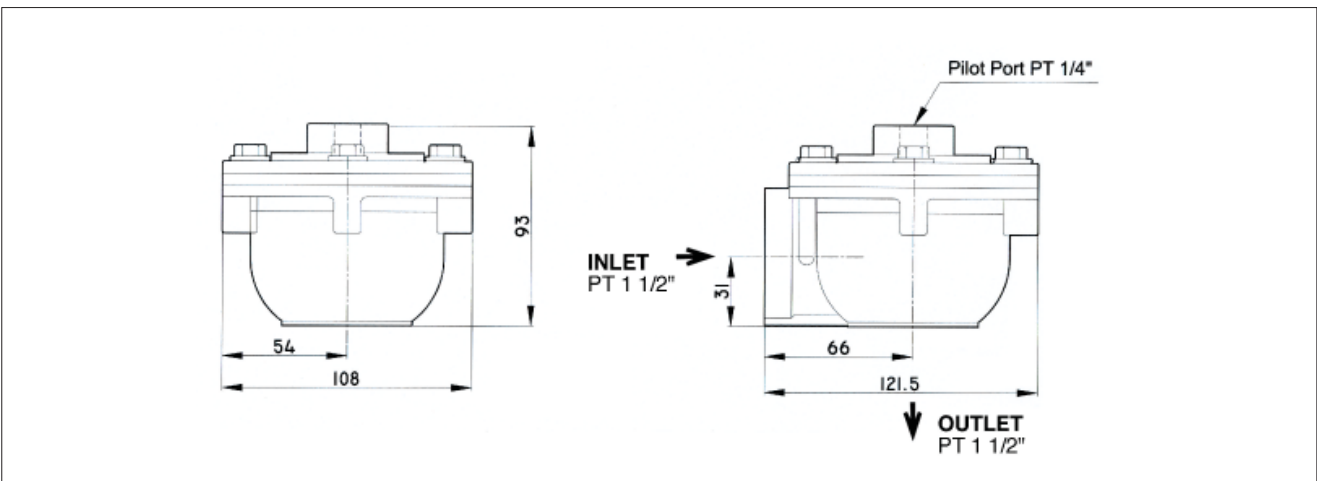


**Air Consumption**



※ Maintenance parts - SPK1: Diaphragm kit(Parts no:2+3)

**Dimensions**



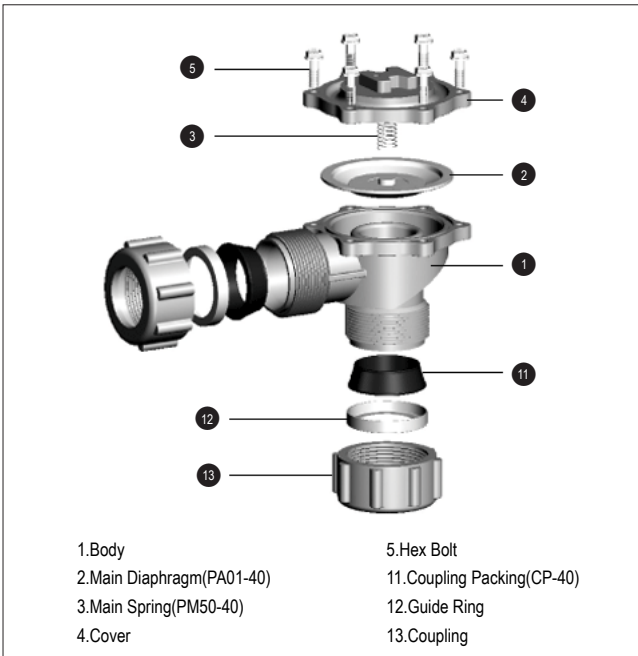


**TH-5840-C(Single, Remote pilot, Coupling)**



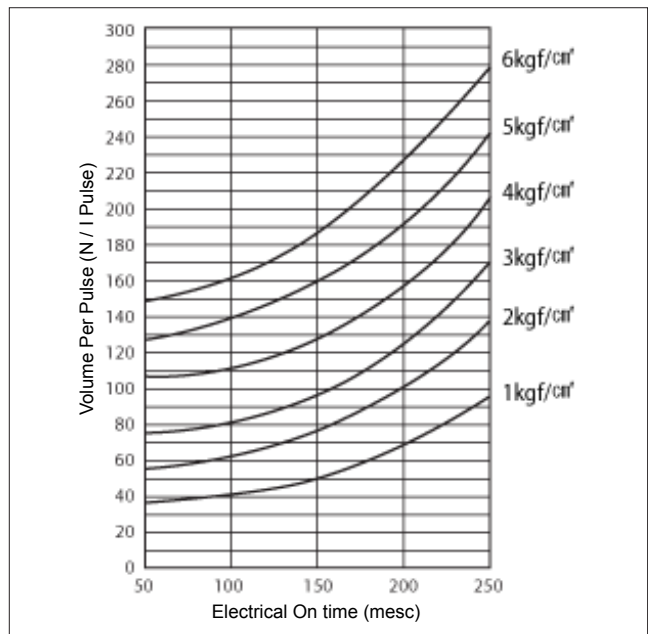
Fluid	Air, Inert gas
Valve function	Nomally close
Port size(inlet/outlet)	Rc(PT) 1 1/2"
Cv Flow Factor	53.9
Valve body	Die-cast aluminum
Fluid temperature	Max. 110°C
Ambient temperature	Max. 100°C
Pilot Air	Single
Port type	Coupling
Diaphragm	Elastomer
Design pressure	10.5kgf/cm <sup>2</sup>
Max.operating pressure	7.5kgf/cm <sup>2</sup>
Weight	1670g

**Construction**

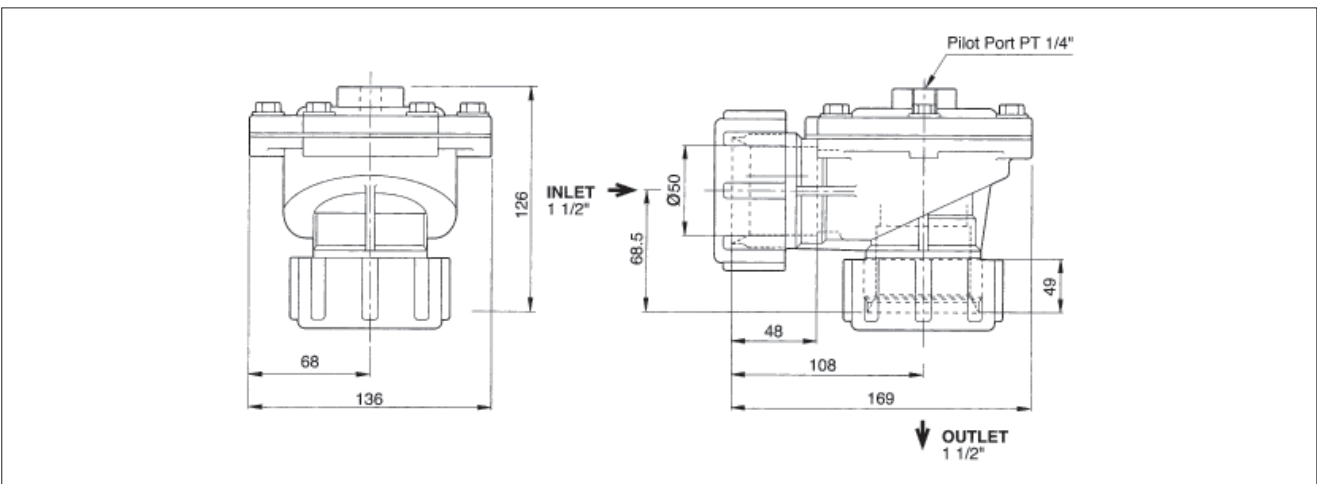


※ Maintenance parts - SPK1: Diaphragm kit(Parts no:2+3)

**Air Consumption**



**Dimensions**

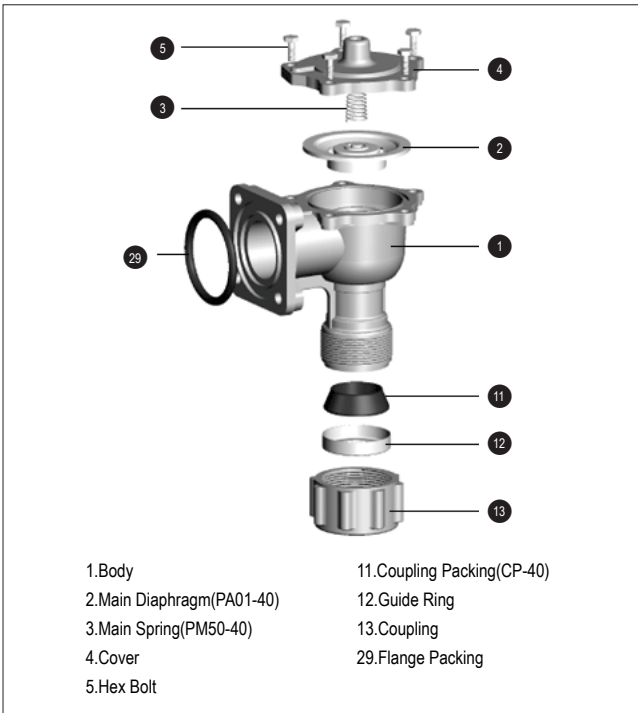


**TH-5840-F(Single, Remote pilot, Flange)**



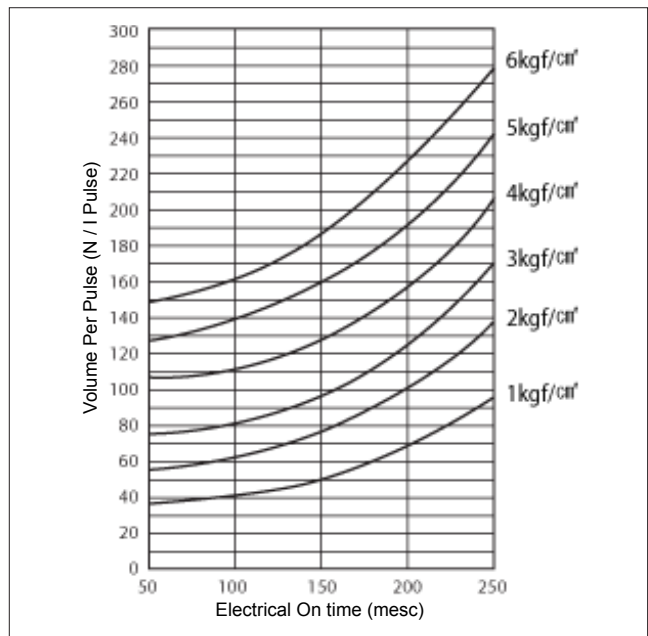
Fluid	Air, Inert gas
Valve function	Normally close
Port size(inlet/outlet)	Inlet: Flange 1 1/2", Outlet: Coupling 1"
Cv Flow Factor	39.0
Valve body	Die-cast aluminum
Fluid temperature	Max. 110°C
Ambient temperature	Max. 100°C
Pilot Air	Single
Port type	Inlet: Flange, Outlet: Coupling
Diaphragm	Elastomer
Design pressure	10.5kgf/cm <sup>2</sup>
Max.operating pressure	7.5kgf/cm <sup>2</sup>
Weight	920g

**Construction**

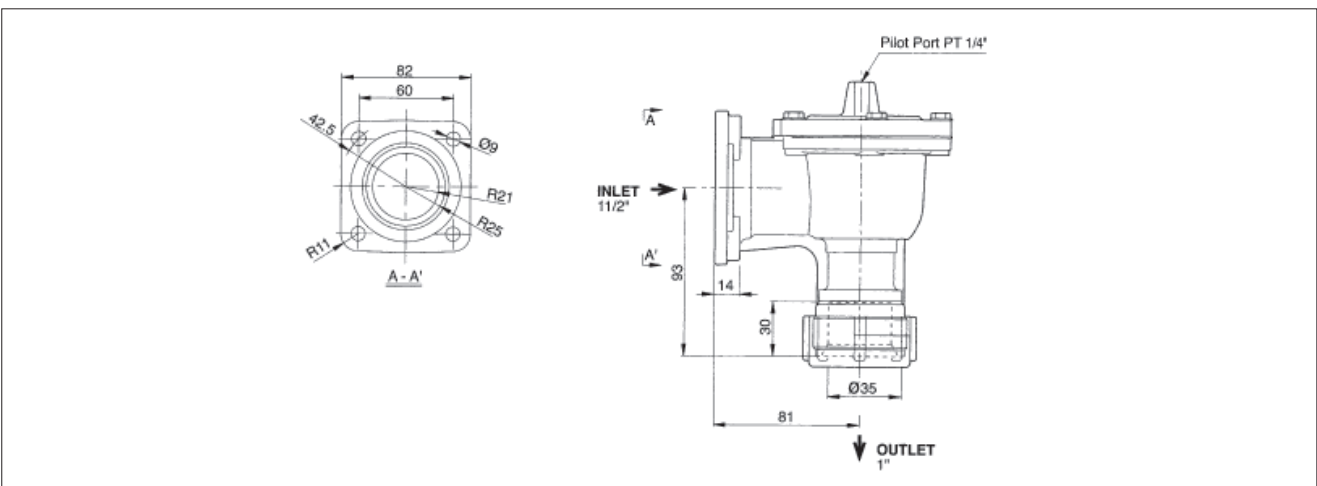


※ Maintenance parts - SPK1: Diaphragm kit(Parts no:2+3)

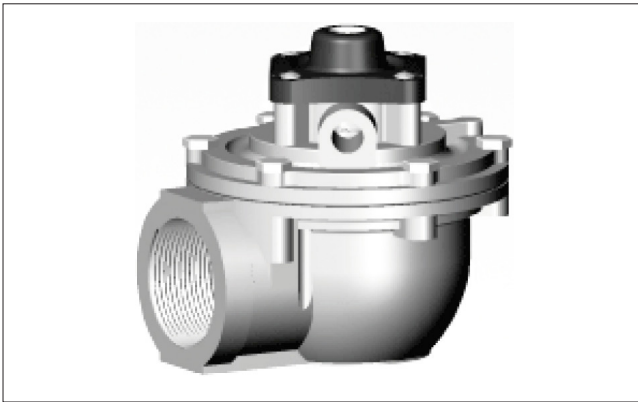
**Air Consumption**



**Dimensions**

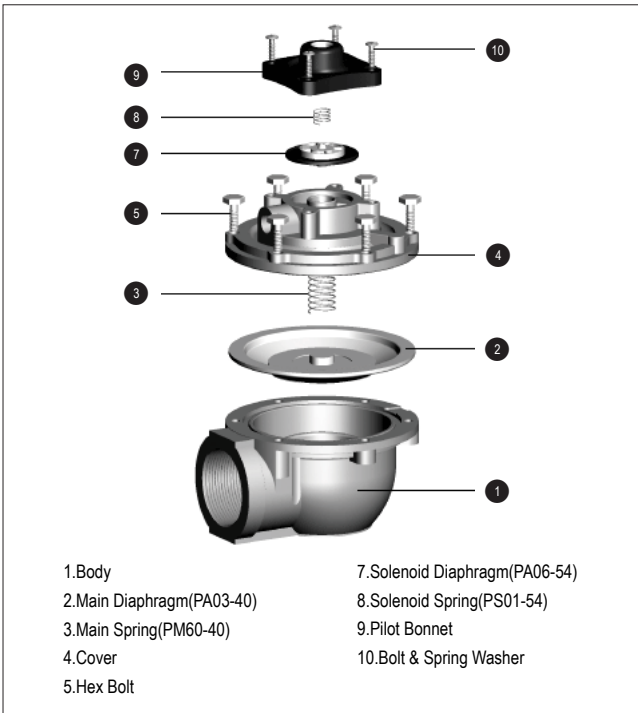


**TH-5440-B(Double, Remote pilot, Screw)**



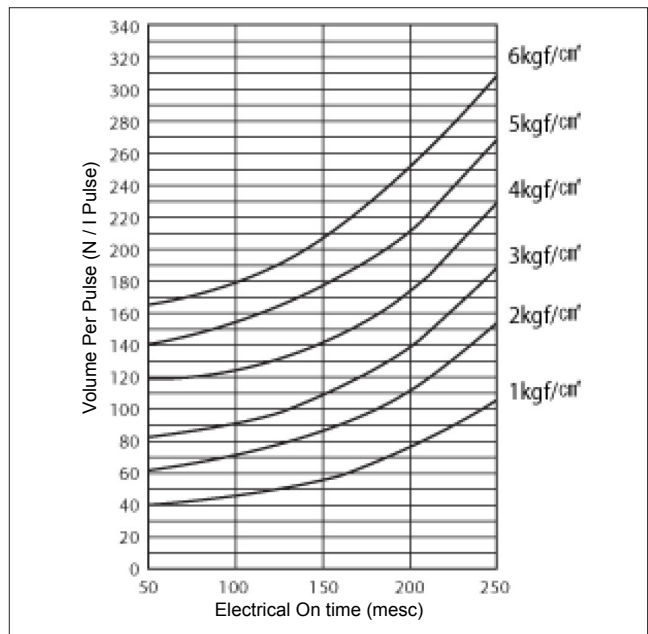
Fluid	Air, Inert gas
Valve function	Nomally close
Port size(inlet/outlet)	Rc(PT) 1 1/2"
Flow(Cv Flow Factor)	53.9
Valve body	Die-cast aluminum
Fluid temperature	Max. 110°C
Ambient temperature	Max. 100°C
Pilot Air	Single
Port type	Screw
Diaphragm	Elastomer
Design pressure	10.5kgf/cm <sup>2</sup>
Max.operating pressure	8.5kgf/cm <sup>2</sup>
Weight	1040g

**Construction**

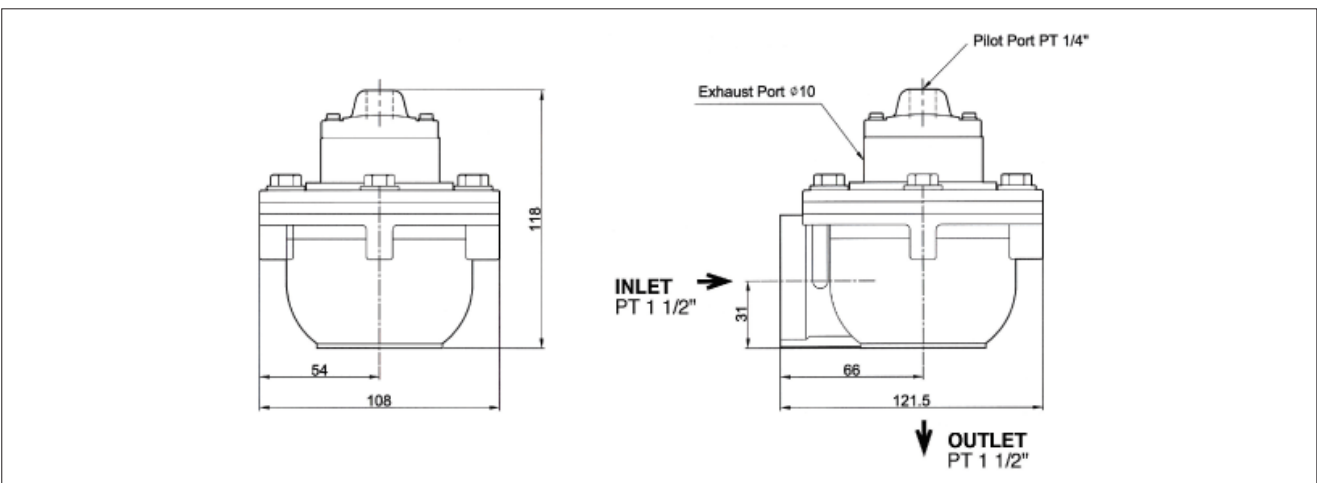


※ Maintenance parts - SPK1: Diaphragm kit(Parts no:2+3+7+8)

**Air Consumption**



**Dimensions**

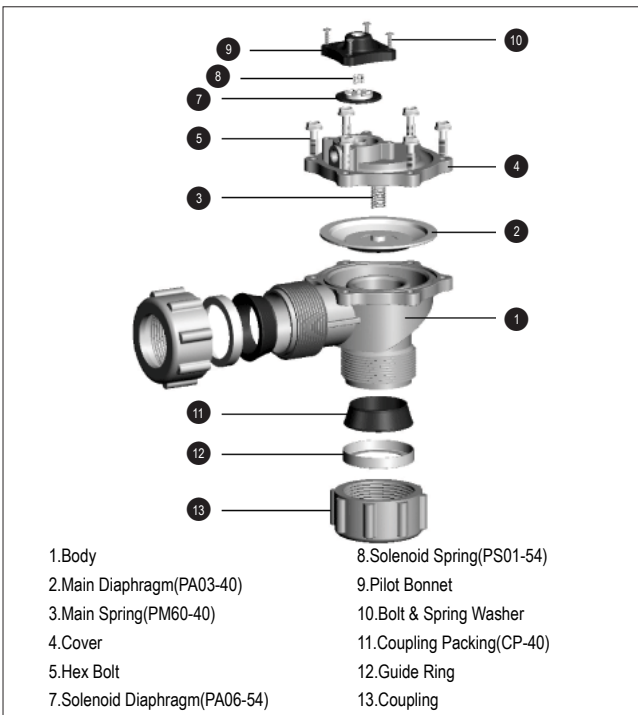


**TH-5440-C(Double, Remote pilot, Coupling)**



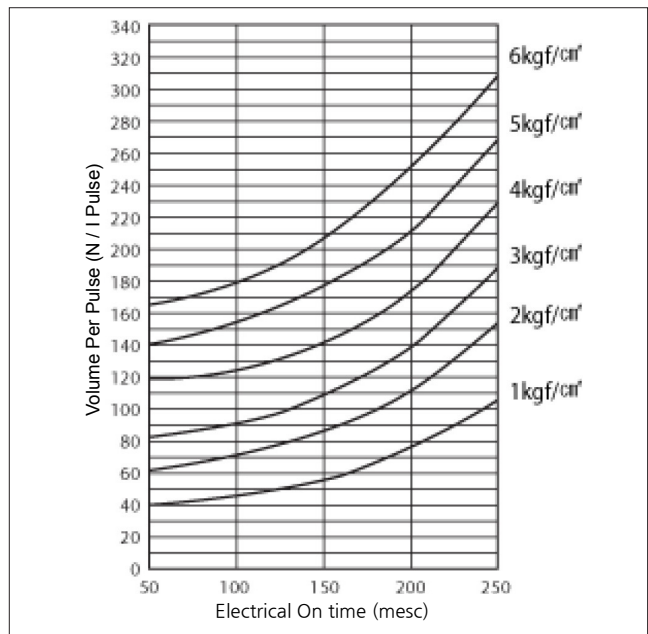
Fluid	Air, Inert gas
Valve function	Nomally close
Port size(inlet/outlet)	Rc(PT) 1 1/2"
Flow(Cv Flow Factor)	53.9
Valve body	Die-cast aluminum
Fluid temperature	Max. 110°C
Ambient temperature	Max. 100°C
Pilot Air	Double
Port type	Coupling
Diaphragm	Elastomer
Design pressure	10.5kgf/cm <sup>2</sup>
Max.operating pressure	8.5kgf/cm <sup>2</sup>
Weight	1770g

**Construction**

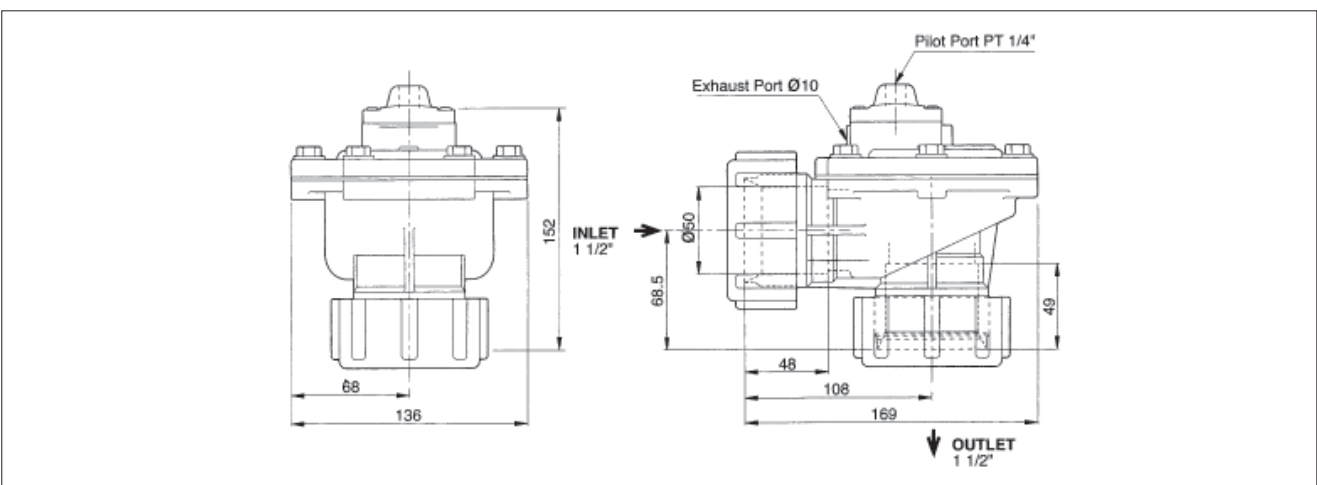


※ Maintenance parts - SPK1: Diaphragm kit(Parts no:2+3+7+8)

**Air Consumption**



**Dimensions**

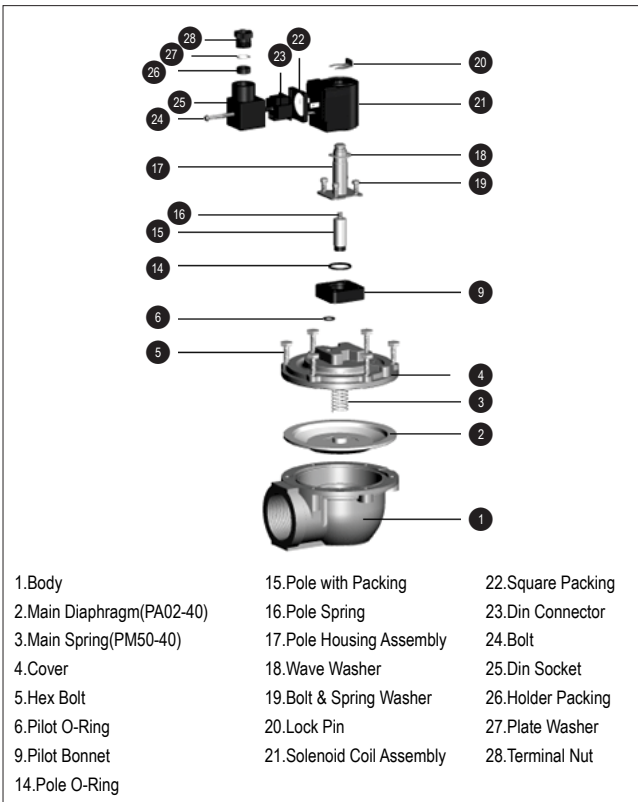


**TH-4840-B(Single, Solenoid integrated, Screw)**

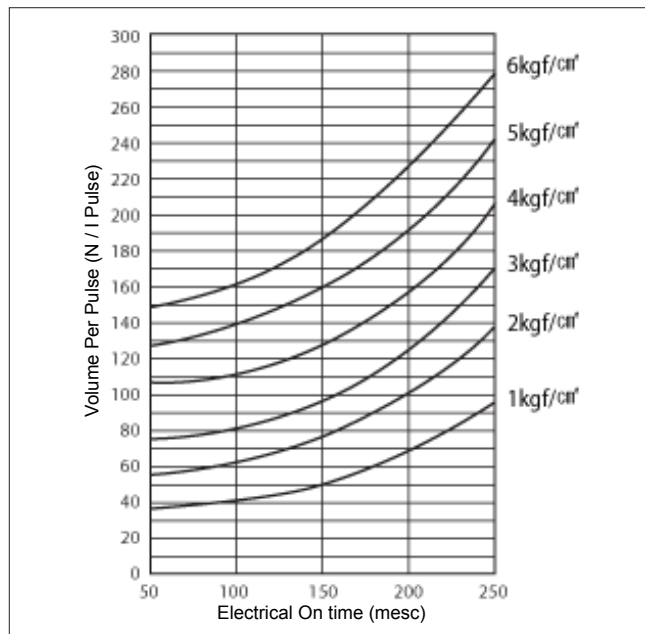


Fluid	Air, Inert gas
Valve function	Nomally close
Port size(inlet/outlet)	Rc(PT) 1 1/2"
Cv Flow Factor	53.9
Valve body	Die-cast aluminum
Fluid temperature	Max. 110°C
Ambient temperature	Max. 100°C
Pilot Air	Single
Port type	Screw
Diaphragm	Elastomer
Design pressure	10.5kgf/cm <sup>2</sup>
Max.operating pressure	8.5kgf/cm <sup>2</sup>
Weight	1315g

**Construction**

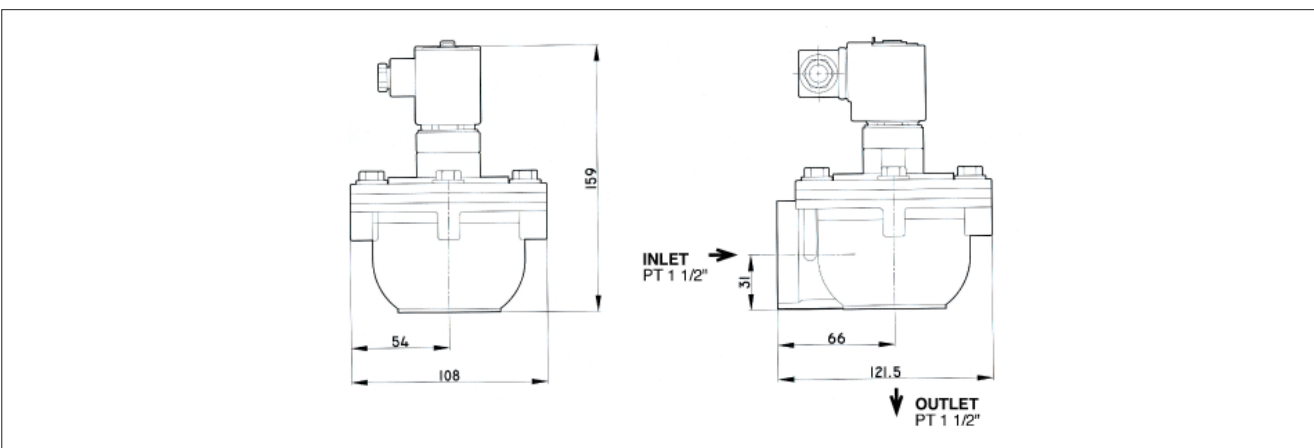


**Air Consumption**



※ Maintenance parts - SPK1: Diaphragm kit(Parts no:2+3), SPK2: Pilot air tube kit(Parts no:14+15+16+17)

**Dimensions**

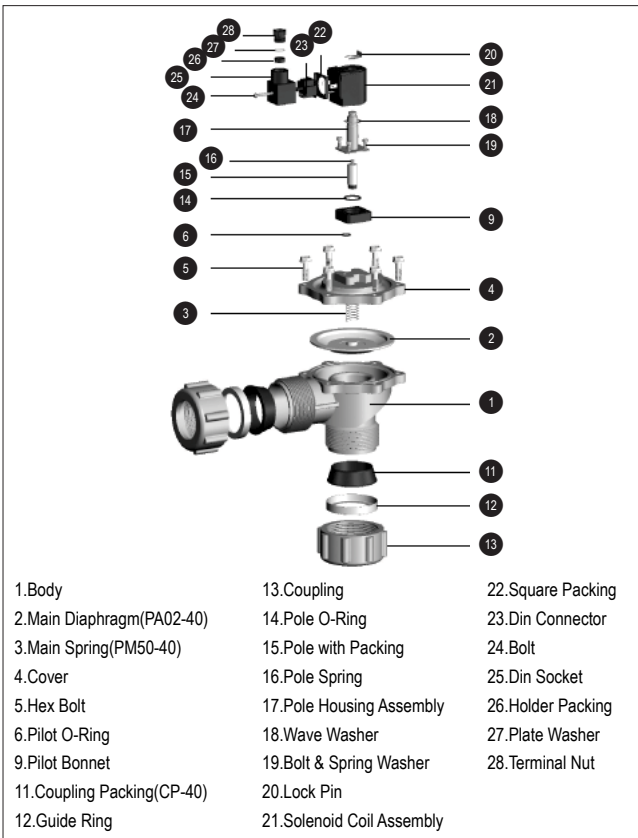


**TH-4840-C(Single, Solenoid integrated, Coupling)**



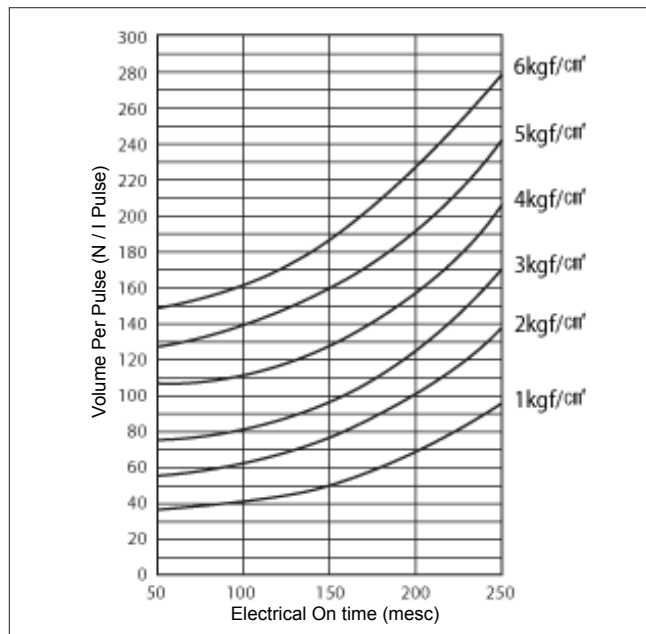
Fluid	Air, Inert gas
Valve function	Nomally close
Port size(inlet/outlet)	Rc(PT) 1 1/2"
Cv Flow Factor	53.9
Valve body	Die-cast aluminum
Fluid temperature	Max. 110°C
Ambient temperature	Max. 100°C
Pilot Air	Single
Port type	Coupling
Diaphragm	Elastomer
Design pressure	10.5kgf/cm <sup>2</sup>
Max.operating pressure	9.5kgf/cm <sup>2</sup>
Weight	2030g

**Construction**

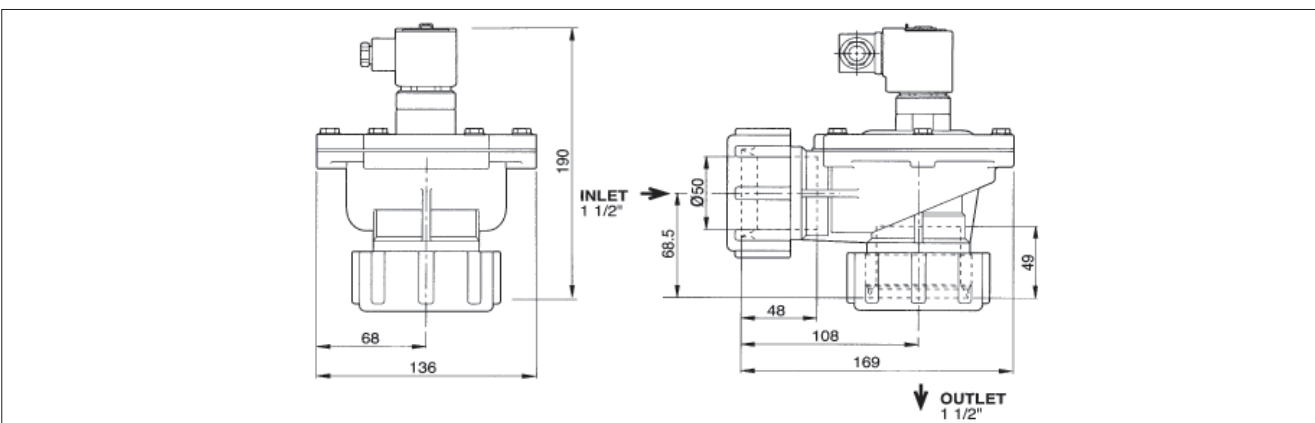


※ Maintenance parts - SPK1: Diaphragm kit(Parts no:2+3), SPK2: Pilot air tube kit(Parts no:14+15+16+17)

**Air Consumption**



**Dimensions**



**TH-4840-F(Single, Solenoid integrated, Flange)**



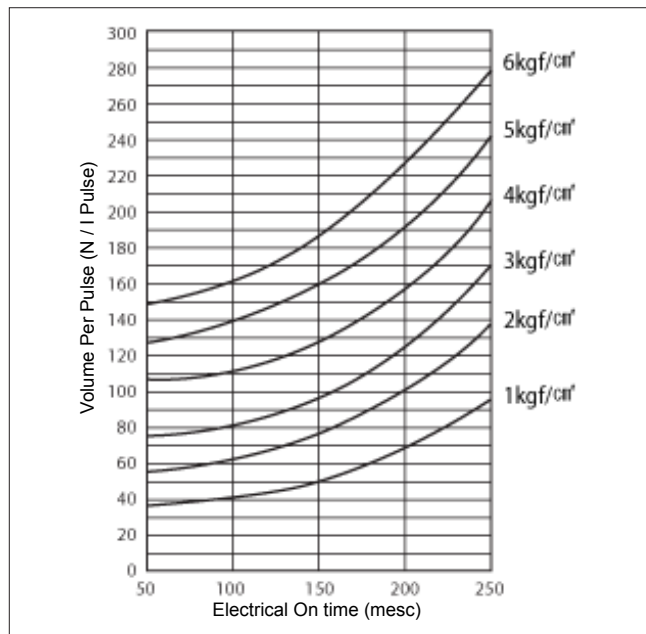
Fluid	Air, Inert gas
Valve function	Nomally close
Port size(inlet/outlet)	Inlet: Flange 1 1/2", Outlet: Coupling 1"
Cv Flow Factor	39.0
Valve body	Die-cast aluminum
Fluid temperature	Max. 110°C
Ambient temperature	Max. 100°C
Pilot Air	Single
Port type	Inlet: Flange, Outlet: Coupling
Diaphragm	Elastomer
Design pressure	10.5kgf/cm <sup>2</sup>
Max.operating pressure	9.5kgf/cm <sup>2</sup>
Weight	1260g

**Construction**

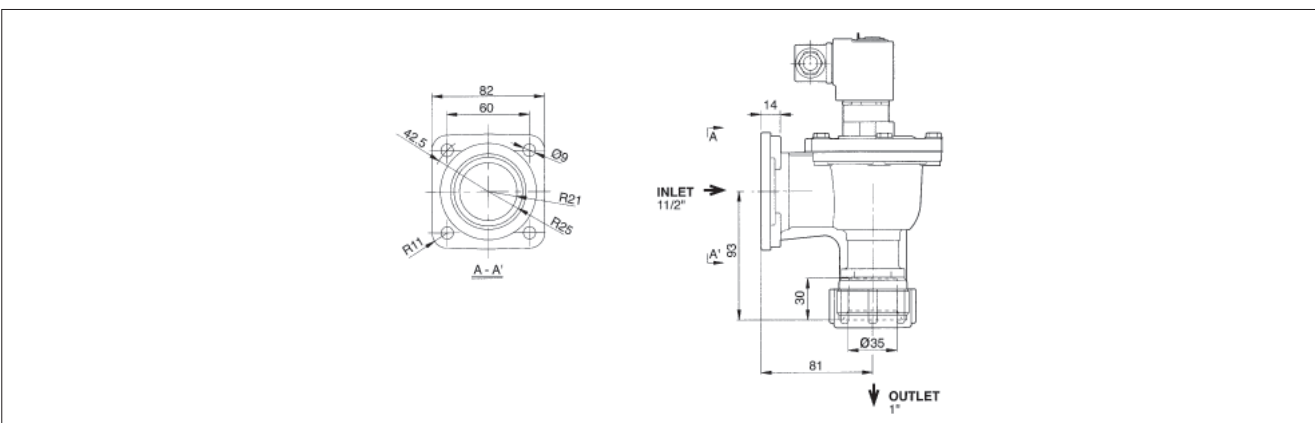
1.Body	14.Pole O-Ring	22.Square Packing
2.Main Diaphragm(PA02-40)	15.Pole with Packing	23.Din Connector
3.Main Spring(PM50-40)	16.Pole Spring	24.Bolt
4.Cover	17.Pole Housing Assembly	25.Din Socket
5.Hex Bolt	18.Wave Washer	26.Holder Packing
11.Coupling Packing(CP-40)	19.Bolt & Spring Washer	27.Plate Washer
12.Guide Ring	20.Lock Pin	28.Terminal Nut
13.Coupling	21.Solenoid Coil Assembly	29.Flange Packing

※ Maintenance parts - SPK1: Diaphragm kit(Parts no:2+3), SPK2: Pilot air tube kit(Parts no:14+15+16+17)

**Air Consumption**

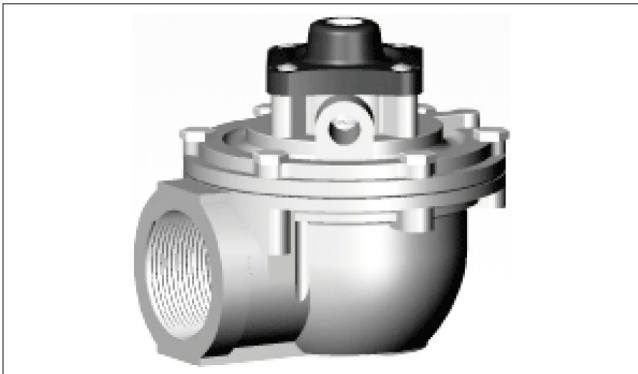


**Dimensions**



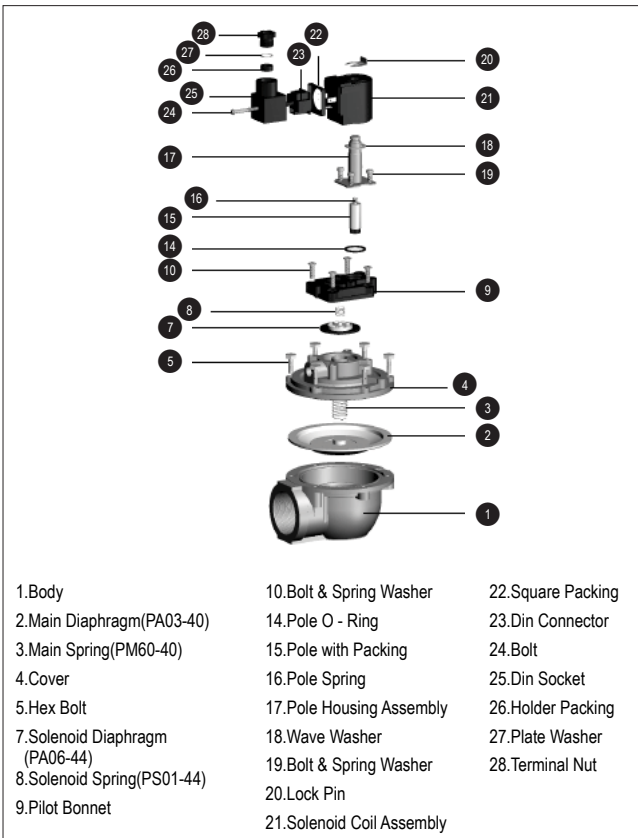


**TH-4440-B(Double, Solenoid integrated, Screw)**



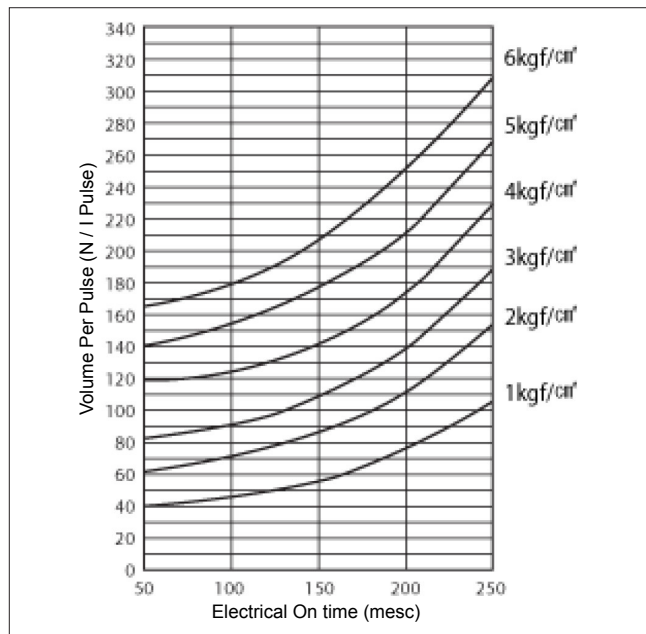
Fluid	Air, Inert gas
Valve function	Nomally close
Port size(inlet/outlet)	Rc(PT) 1 1/2"
Cv Flow Factor	53.9
Valve body	Die-cast aluminum
Fluid temperature	Max. 110°C
Ambient temperature	Max. 100°C
Pilot Air	Double
Port type	Screw
Diaphragm	Elastomer
Design pressure	10.5kgf/cm <sup>2</sup>
Max.operating pressure	9.8kgf/cm <sup>2</sup>
Weight	1395g

**Construction**

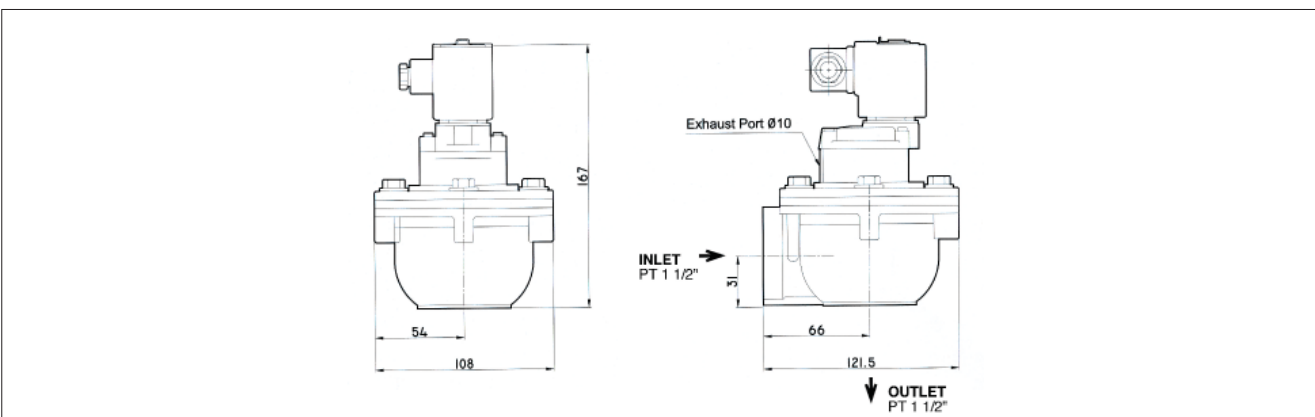


※ Maintenance parts - SPK1: Diaphragm kit(Parts no.:2+3+7+8), SPK2: Pilot air tube kit(Parts no.:14+15+16+17)

**Air Consumption**



**Dimensions**

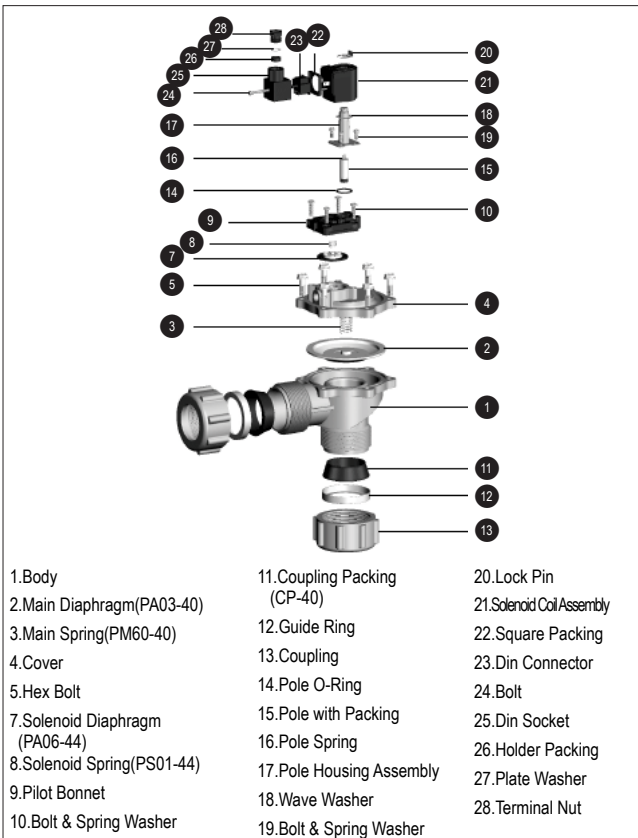


**TH-4440-C(Double, Solenoid integrated, Coupling)**



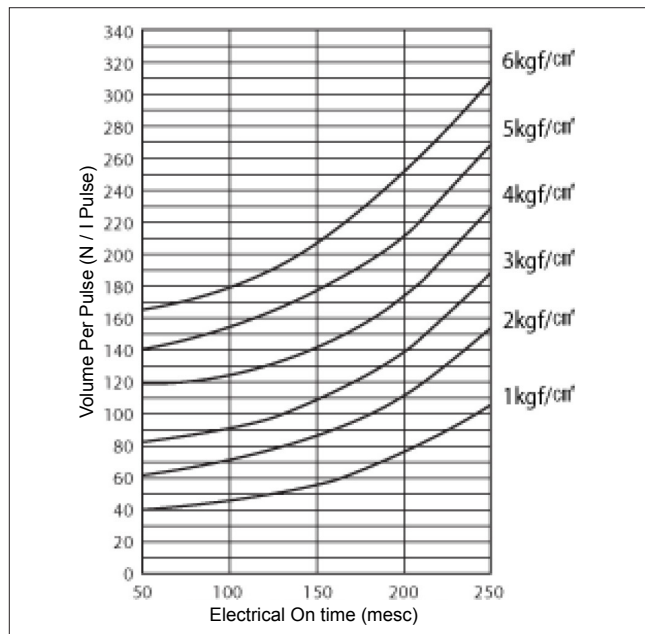
Fluid	Air, Inert gas
Valve function	Nomally close
Port size(inlet/outlet)	Rc(PT) 1 1/2"
Cv Flow Factor	53.9
Valve body	Die-cast aluminum
Fluid temperature	Max. 110°C
Ambient temperature	Max. 100°C
Pilot Air	Double
Port type	Coupling
Diaphragm	Elastomer
Design pressure	10.5kgf/cm <sup>2</sup>
Max.operating pressure	9.8kgf/cm <sup>2</sup>
Weight	2110g

**Construction**

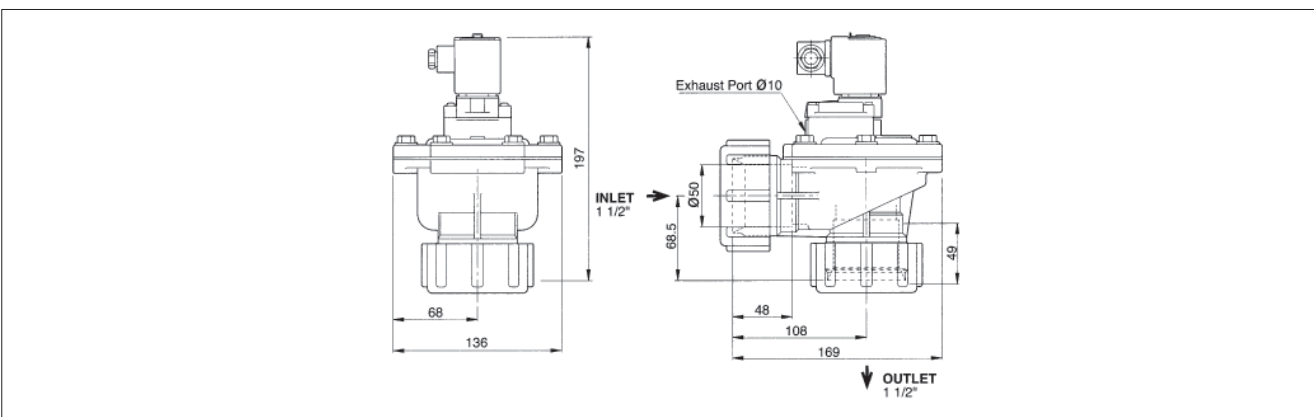


※ Maintenance parts - SPK1: Diaphragm kit(Parts no:2+3+7+8), SPK2: Pilot air tube kit(Parts no:14+15+16+17)

**Air Consumption**



**Dimensions**

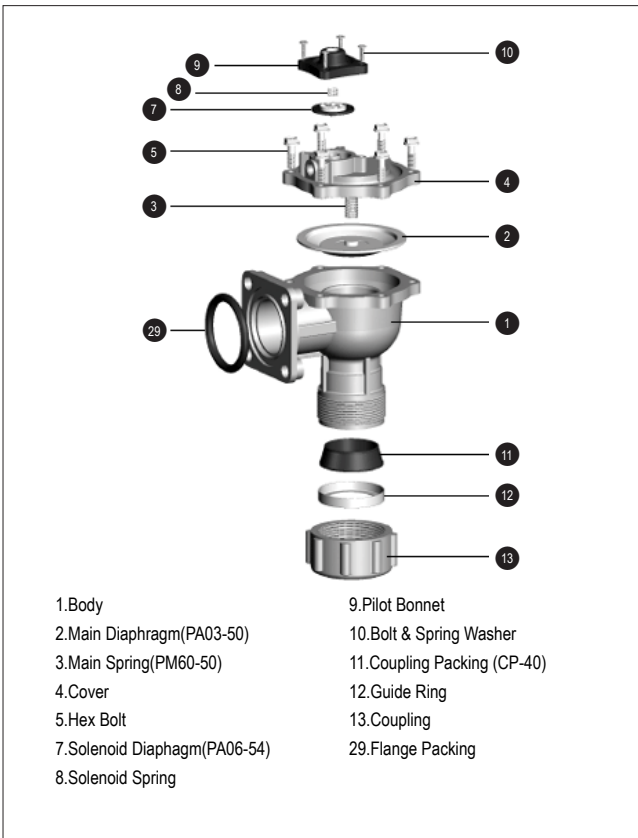


**TH-5450-F(Double, Remote pilot, Flange)**



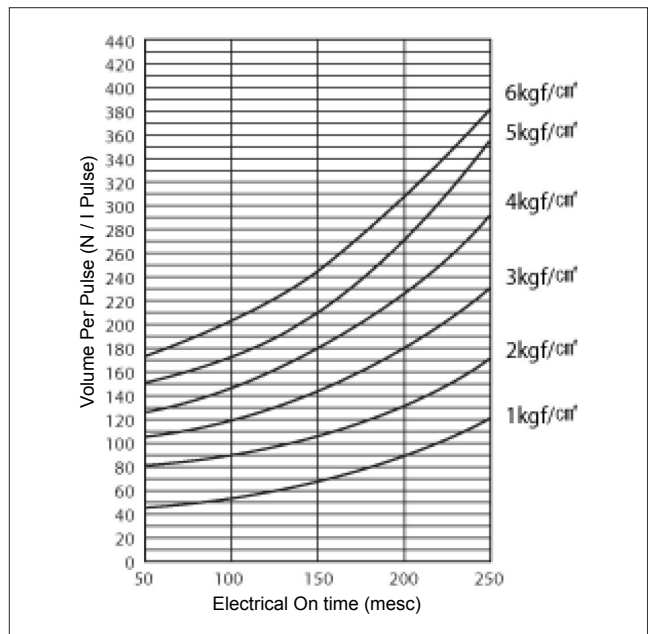
Fluid	Air, Inert gas
Valve function	Nomally close
Port size(inlet/outlet)	Inlet: Flange 2", Outlet: Coupling 1 1/2"
Flow(Cv Flow Factor)	68.5
Valve body	Die-cast aluminum
Fluid temperature	Max. 110°C
Ambient temperature	Max. 100°C
Pilot Air	Double
Port type	Inlet: Flange, Outlet: Coupling
Diaphragm	Elastomer
Design pressure	10.5kgf/cm <sup>2</sup>
Max.operating pressure	8.5kgf/cm <sup>2</sup>
Weight	1800g

**Construction**

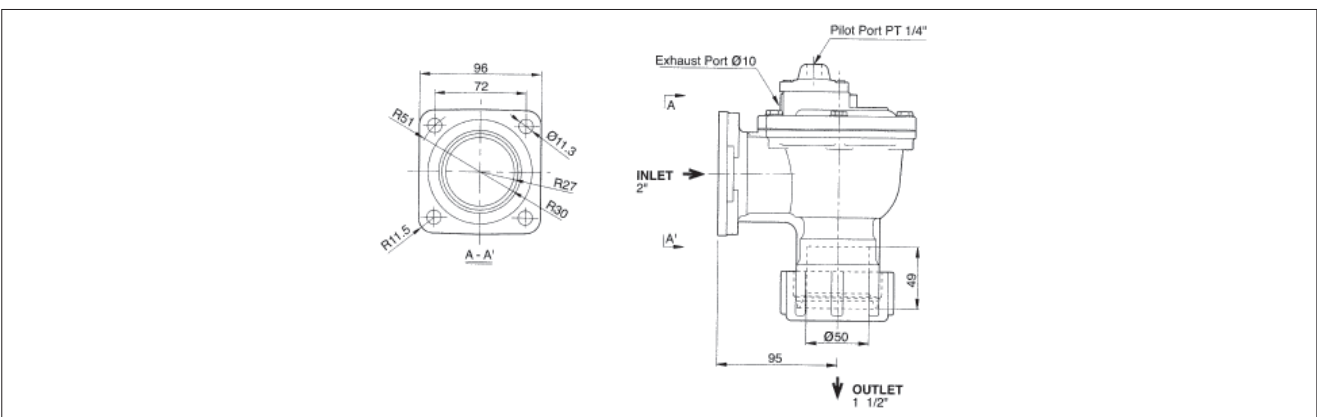


※ Maintenance parts - SPK1: Diaphragm kit(Parts no:2+3+7+8)

**Air Consumption**



**Dimensions**

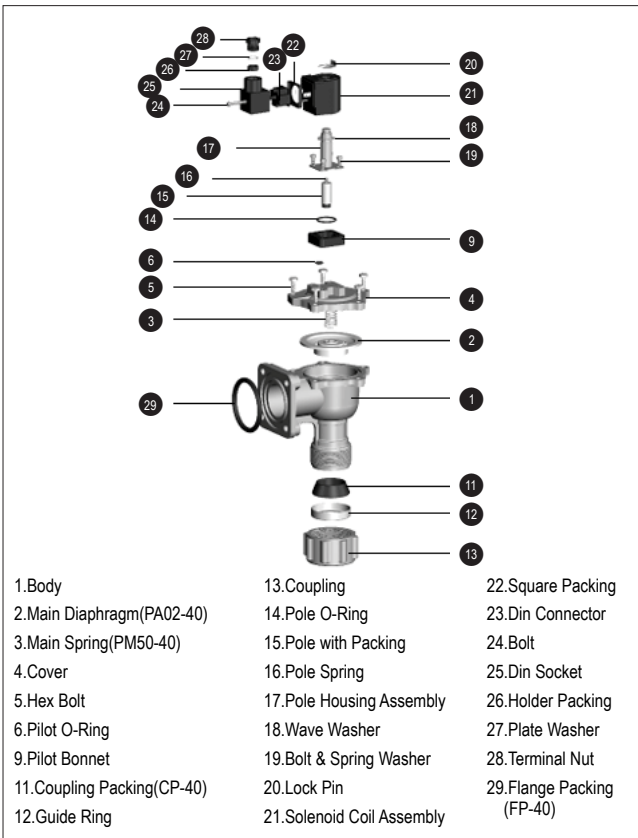


**TH-4850-F(Single, Solenoid integrated, Flange)**



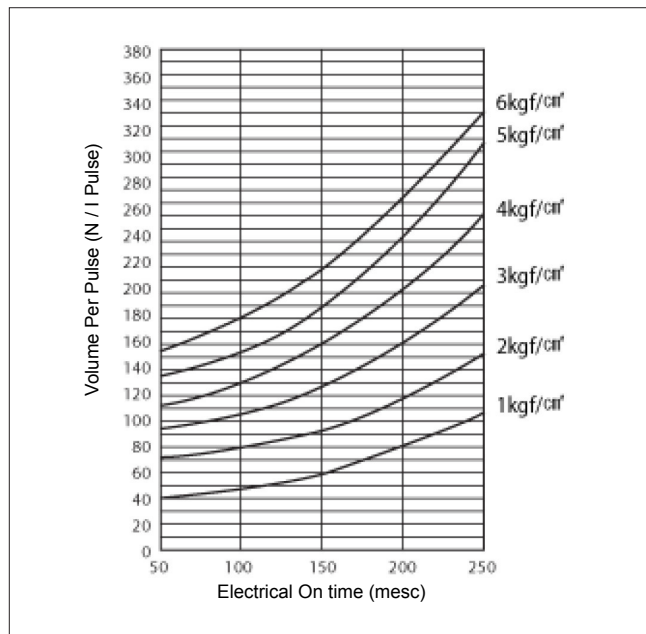
Fluid	Air, Inert gas
Valve function	Nomally close
Port size(inlet/outlet)	Inlet: Flange 2", Outlet: Coupling 1 1/2"
Cv Flow Factor	68.5
Valve body	Die-cast aluminum
Fluid temperature	Max. 110°C
Ambient temperature	Max. 100°C
Pilot Air	Single
Port type	Inlet: Flange, Outlet: Coupling
Diaphragm	Elastomer
Design pressure	10.5kgf/cm <sup>2</sup>
Max.operating pressure	8.5kgf/cm <sup>2</sup>
Weight	2065g

**Construction**

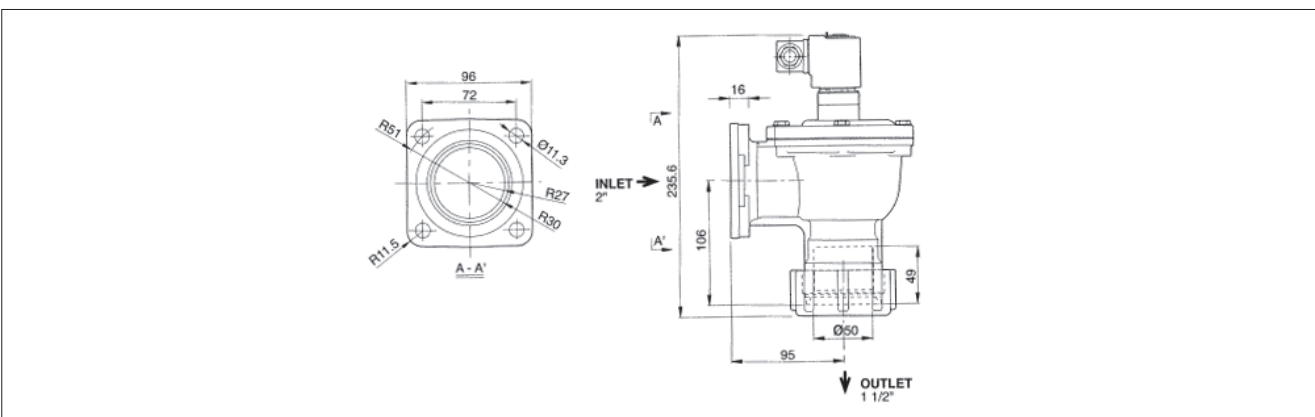


※ Maintenance parts - SPK1: Diaphragm kit(Parts no:2+3), SPK2: Pilot air tube kit(Parts no:14+15+16+17)

**Air Consumption**



**Dimensions**

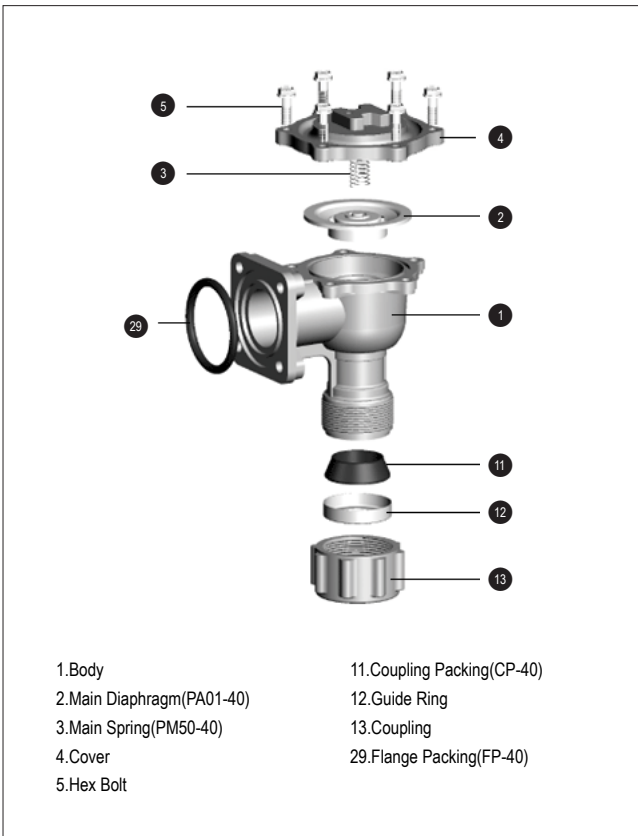


**TH-5850-F(Single, Remote pilot, Flange)**



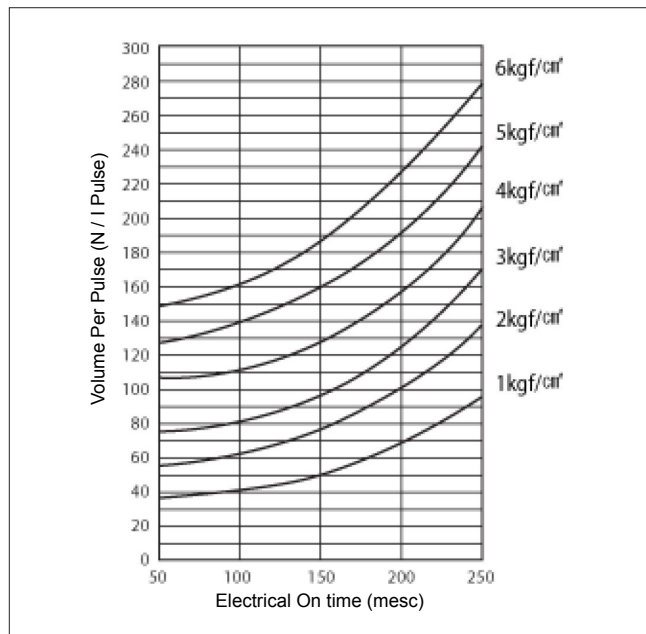
Fluid	Air, Inert gas
Valve function	Nomally close
Port size(inlet/outlet)	Inlet: Flange 2", Outlet: Coupling 1 1/2"
Flow(Cv Flow Factor)	68.5
Valve body	Die-cast aluminum
Fluid temperature	Max. 110°C
Ambient temperature	Max. 100°C
Pilot Air	Single
Port type	Inlet: Flange, Outlet: Coupling
Diaphragm	Elastomer
Design pressure	10.5kgf/cm <sup>2</sup>
Max.operating pressure	7.5kgf/cm <sup>2</sup>
Weight	1705g

**Construction**

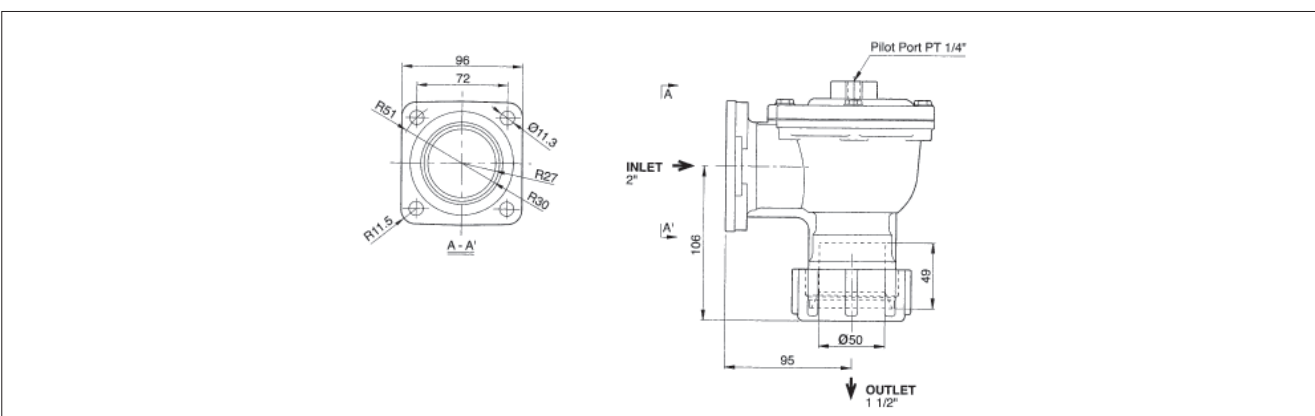


※ Maintenance parts - SPK1: Diaphragm kit(Parts no:2+3)

**Air Consumption**



**Dimensions**

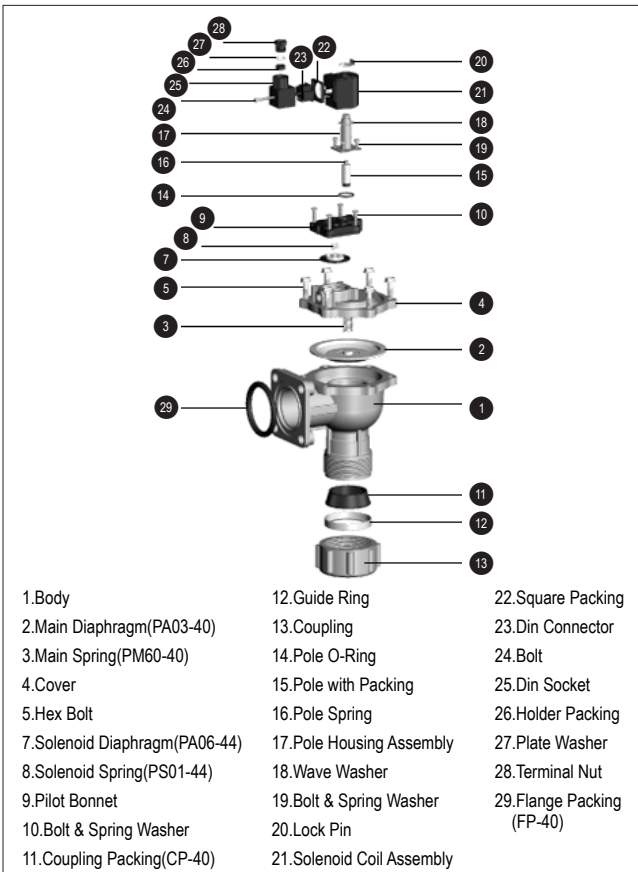


**TH-4450-F(Double, Solenoid integrated, Flange)**



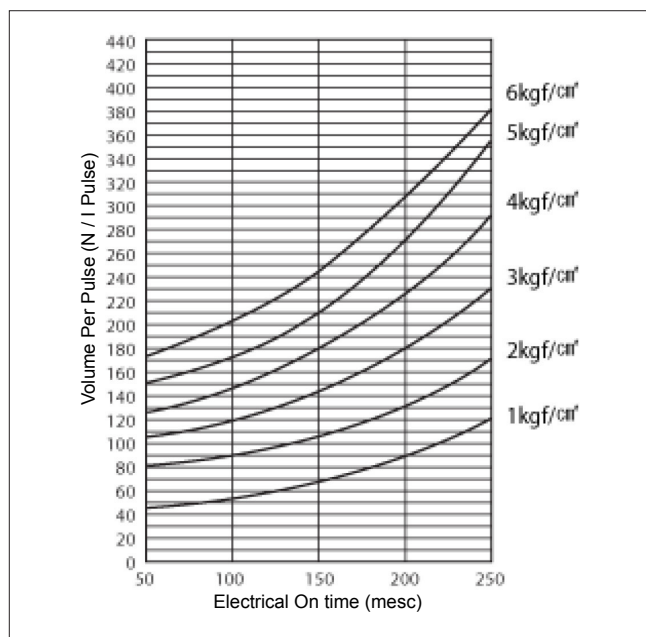
Fluid	Air, Inert gas
Valve function	Nomally close
Port size(inlet/outlet)	Inlet: Flange 2", Outlet: Coupling 1 1/2"
Cv Flow Factor	68.5
Valve body	Die-cast aluminum
Fluid temperature	Max. 110°C
Ambient temperature	Max. 100°C
Pilot Air	Double
Port type	Inlet: Flange, Outlet: Coupling
Diaphragm	Elastomer
Design pressure	10.5kgf/cm <sup>2</sup>
Max.operating pressure	9.8kgf/cm <sup>2</sup>
Weight	2120g

**Construction**

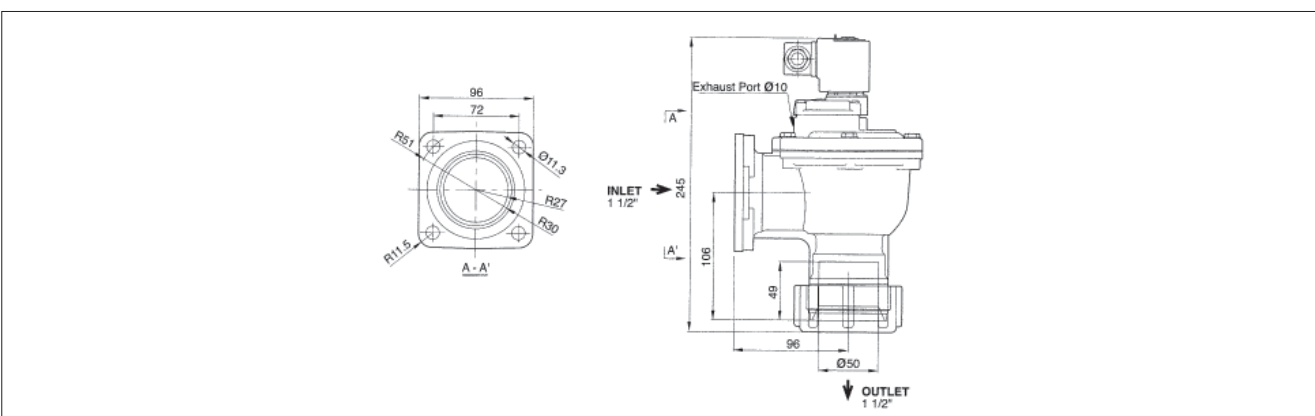


※ Maintenance parts - SPK1: Diaphragm kit(Parts no:2+3+7+8), SPK2: Pilot air tube kit(Parts no:14+15+16+17)

**Air Consumption**



**Dimensions**

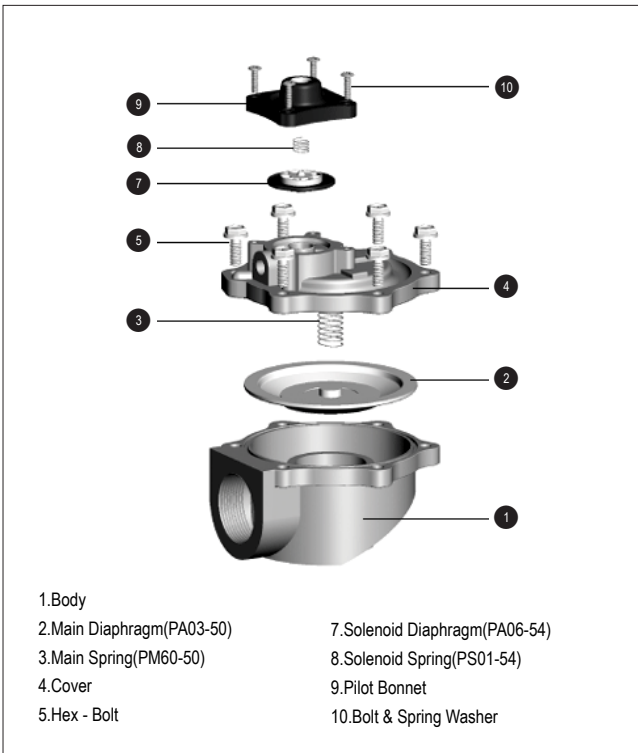


**TH-5450-B(Double, Remote pilot, Screw)**



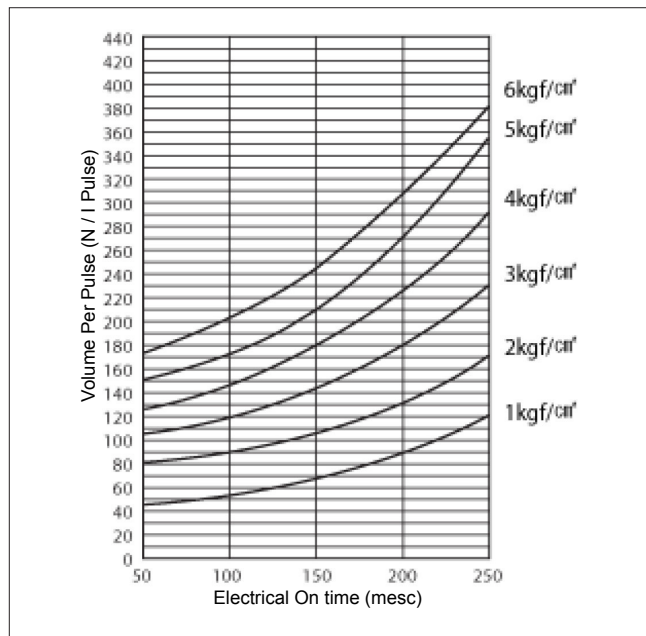
Fluid	Air, Inert gas
Valve function	Nomally close
Port size(inlet/outlet)	Rc(PT) 2"
Cv Flow Factor	74.2
Valve body	Die-cast aluminum
Fluid temperature	Max. 110°C
Ambient temperature	Max. 100°C
Pilot Air	Double
Port type	Screw
Diaphragm	Elastomer
Design pressure	10.5kgf/cm <sup>2</sup>
Max.operating pressure	8.5kgf/cm <sup>2</sup>
Weight	1895g

**Construction**

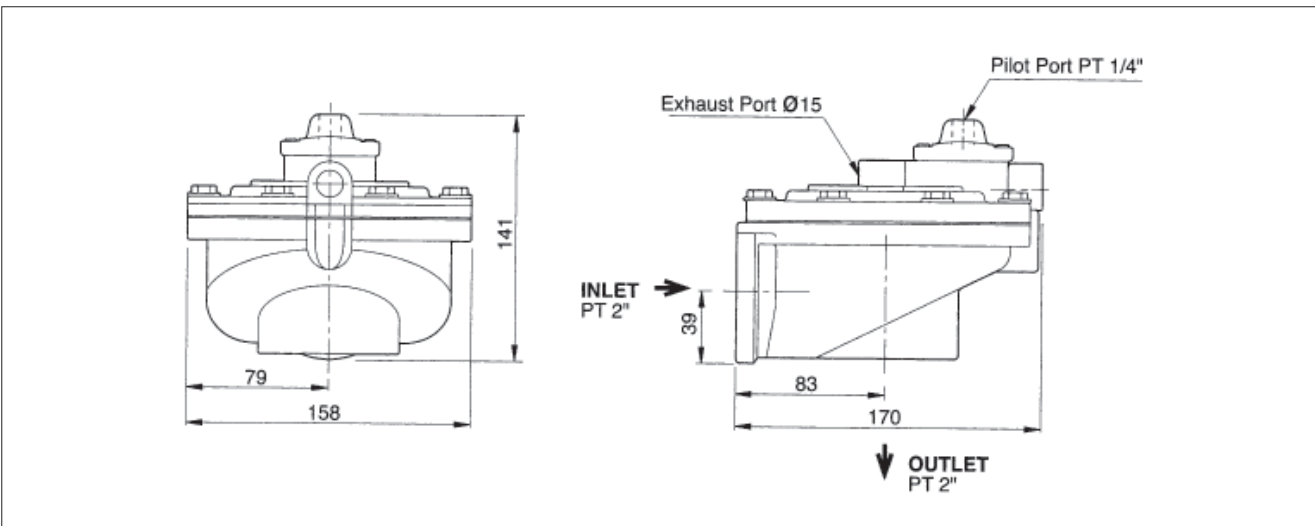


※ Maintenance parts - SPK1: Diaphragm kit(Parts no:2+3+7+8)

**Air Consumption**



**Dimensions**



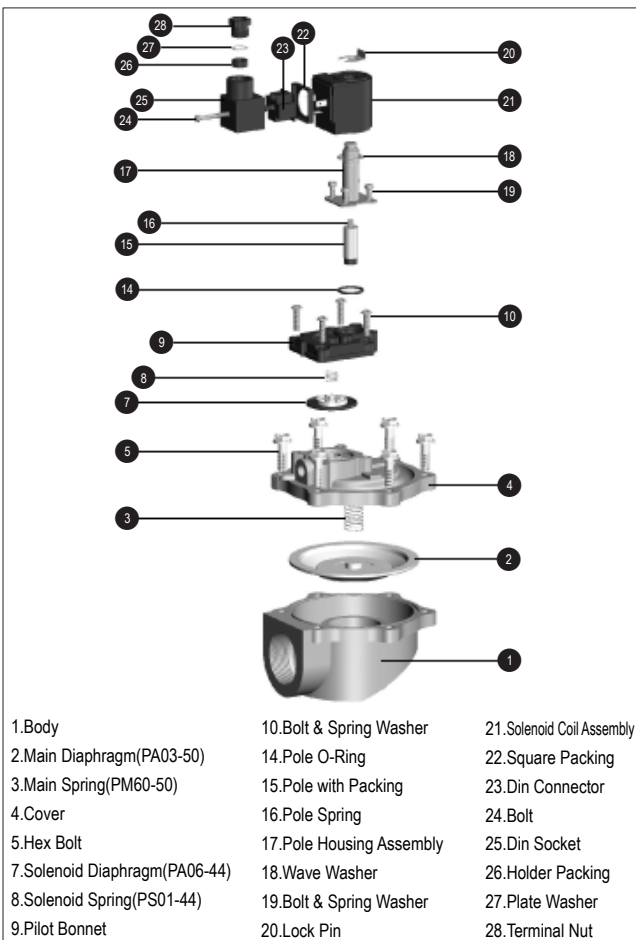


**TH-4450-B(Double, Solenoid integrated, Screw)**



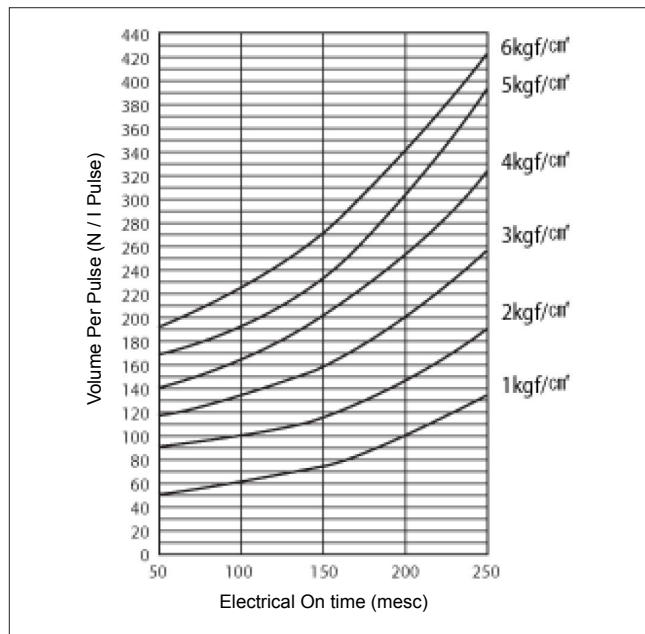
Fluid	Air, Inert gas
Valve function	Nomally close
Port size(inlet/outlet)	Rc(PT) 2"
Cv Flow Factor	74.2
Valve body	Die-cast aluminum
Fluid temperature	Max. 110°C
Ambient temperature	Max. 100°C
Pilot Air	Double
Port type	Screw
Diaphragm	Elastomer
Design pressure	10.5kgf/cm <sup>2</sup>
Max.operating pressure	9.8kgf/cm <sup>2</sup>
Weight	2240g

**Construction**

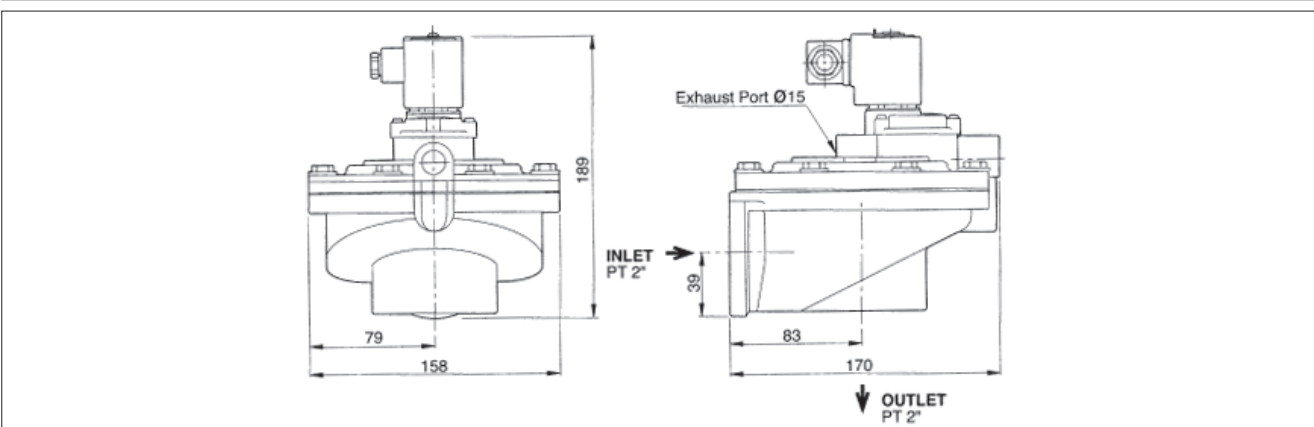


\* Maintenance parts - SPK1: Diaphragm kit(Parts no:2+3+7+8), SPK2: Pilot air tube kit(Parts no:14+15+16+17)

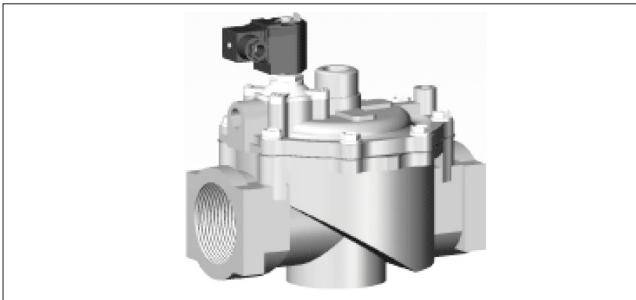
**Air Consumption**



**Dimensions**

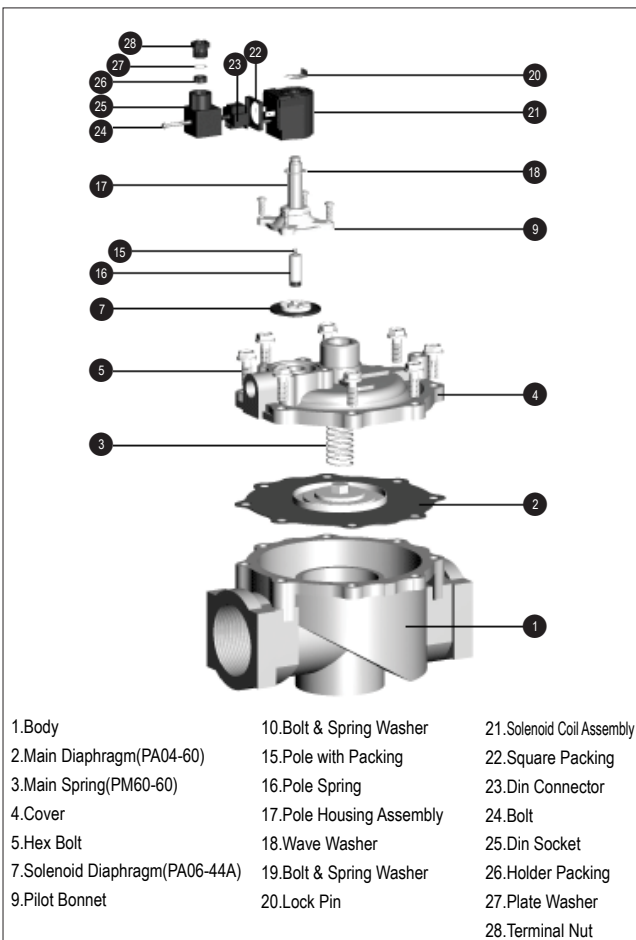


**TH-4460-S(Double, Solenoid integrated, Screw)**



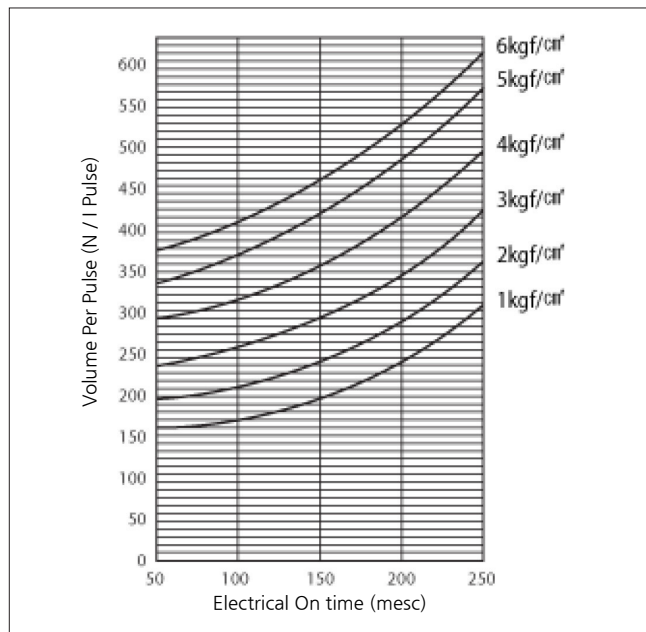
Fluid	Air, Inert gas
Valve function	Nomally close
Port size(inlet/outlet)	Rc(PT) 2 1/2"
Flow(Cv Flow Factor)	110.0
Valve body	Die-cast aluminum
Fluid temperature	Max. 110°C
Ambient temperature	Max. 100°C
Pilot Air	Double
Port type	Screw(Straight)
Diaphragm	NBR
Disk Material	Elastomer
Design pressure	10.5kgf/cm <sup>2</sup>
Max.operating pressure	9.8kgf/cm <sup>2</sup>
Weight	4730g

**Construction**

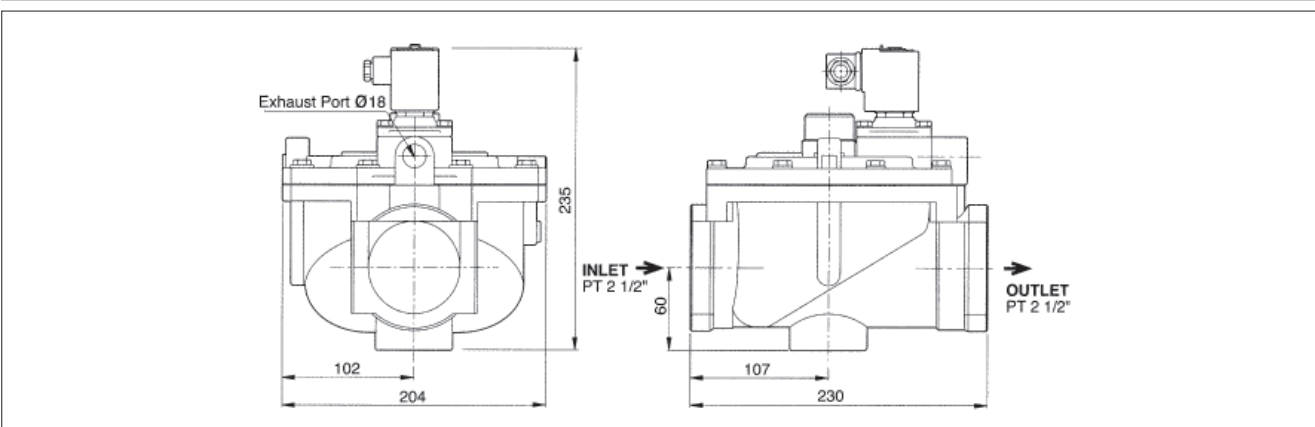


※ Maintenance parts - SPK1: Diaphragm kit(Parts no:2+3+7+8), SPK2: Pilot air tube kit(Parts no:14+15+16+17)

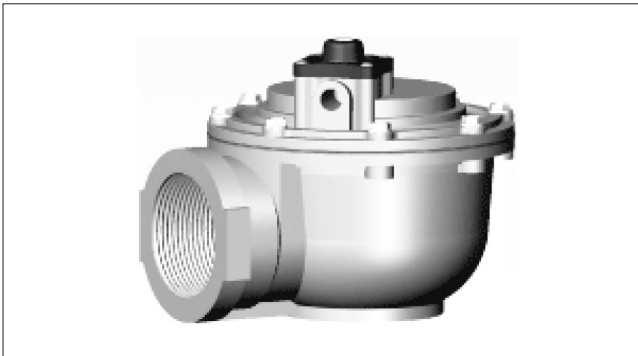
**Air Consumption**



**Dimensions**

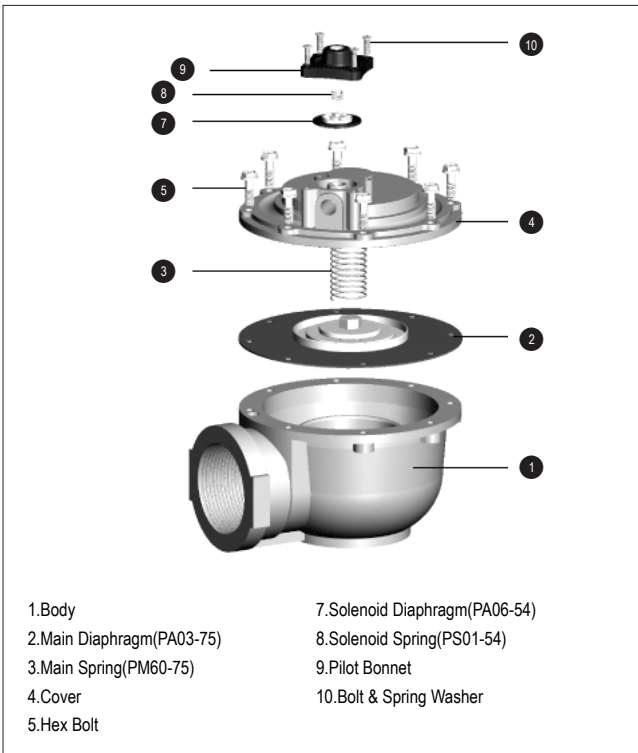


**TH-5475-B(Double, Remote pilot, Screw)**



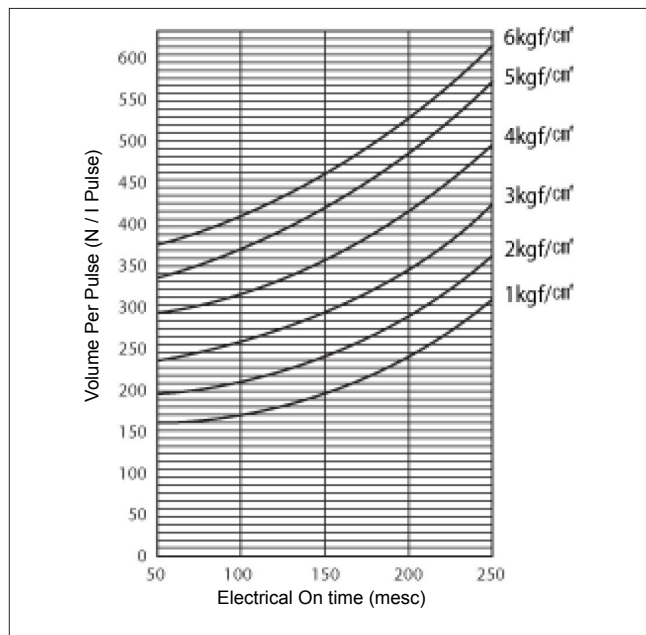
Fluid	Air, Inert gas
Valve function	Nomally close
Port size(inlet/outlet)	Rc(PT) 3"
Flow(Cv Flow Factor)	142.0
Valve body	Die-cast aluminum
Fluid temperature	Max. 110°C
Ambient temperature	Max. 100°C
Pilot Air	Double
Port type	Screw
Diaphragm	NBR
Disk Material	Elastomer
Design pressure	10.5kgf/cm <sup>2</sup>
Max.operating pressure	8.5kgf/cm <sup>2</sup>
Weight	3505g

**Construction**

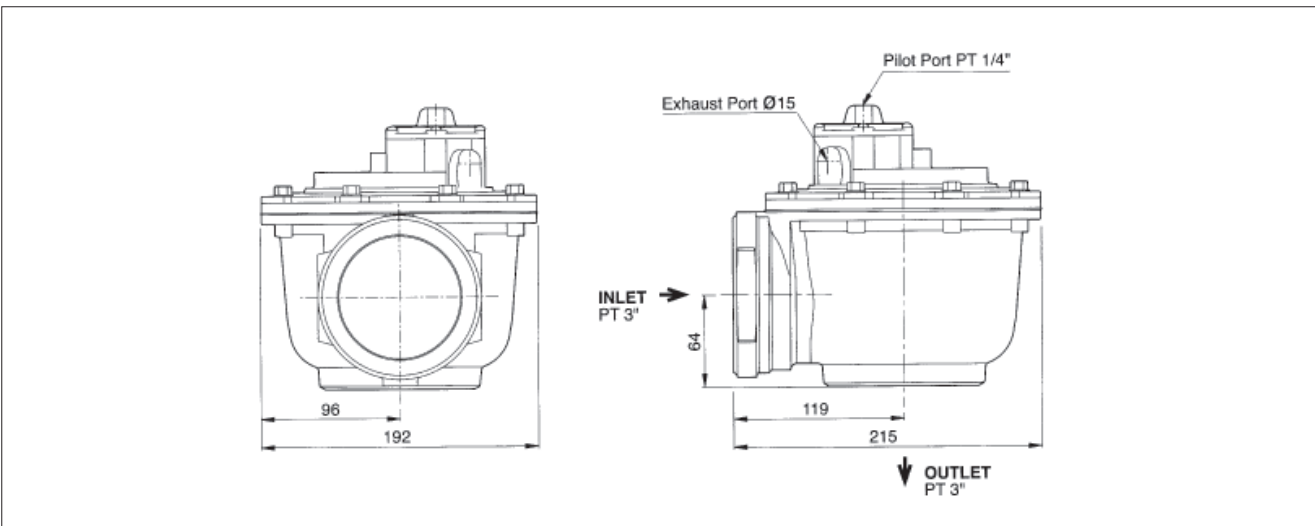


※ Maintenance parts - SPK1: Diaphragm kit(Parts no:2+3+7+8)

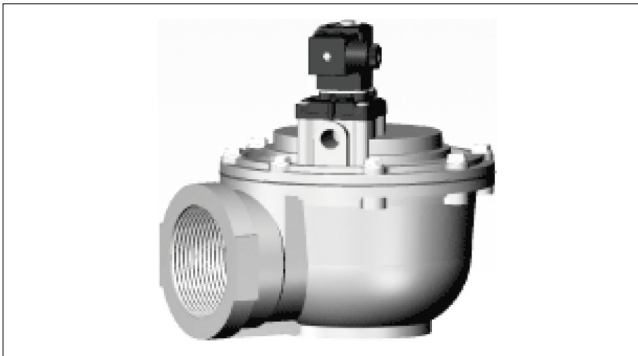
**Air Consumption**



**Dimensions**



**TH-4475-B(Double, Solenoid integrated, Screw)**



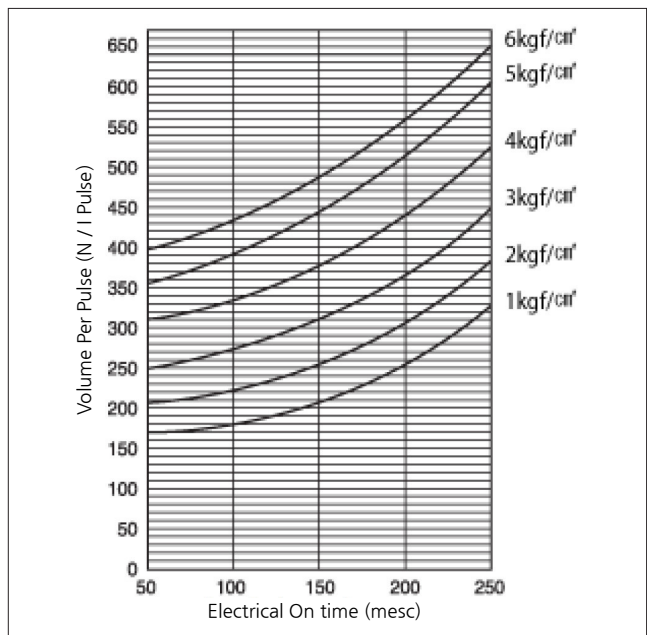
Fluid	Air, Inert gas
Valve function	Nomally close
Port size(inlet/outlet)	Rc(PT) 3
Flow(Cv Flow Factor)	142.0
Valve body	Die-cast aluminum
Fluid temperature	Max. 110°C
Ambient temperature	Max. 100°C
Pilot Air	Double
Port type	Screw
Diaphragm	NBR
Disk material	Elastomer
Design pressure	10.5kgf/cm <sup>2</sup>
Max.operating pressure	8.5kgf/cm <sup>2</sup>
Weight	3825g

**Construction**

1.Body	10.Bolt & Spring Washer	22.Square Packing
2.Main Diaphragm(PA03-75)	14.Pole O-Ring	23.Din Connector
3.Main Spring(PM60-75)	15.Pole with Packing	24.Bolt
4.Cover	16.Pole Spring	25.Din Socket
5.Hex Bolt	17.Pole Housing Assembly	26.Holder Packing
7.Solenoid Diaphragm (PA06-44)	18.Wave Washer	27.Plate Washer
8.Solenoid Spring(PS01-44)	19.Bolt & Spring Washer	28.Terminal Nut
9.Pilot Bonnet	20.Lock Pin	
	21.Solenoid Coil Assembly	

※ Maintenance parts - SPK1: Diaphragm kit(Parts no:2+3+7+8), SPK2: Pilot air tube kit(Parts no:14+15+16+17)

**Air Consumption**



**Dimensions**

