

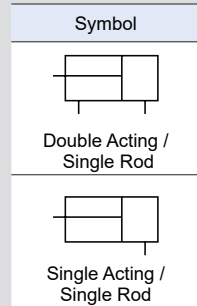
KLC series



KLC CA-50 SM-64

Features

- Low friction cylinder.
- Bore size: ø50, ø63.
Single clevis mounting style.
- Smooth slow movement is possible.



How to Order

KLC CA - 50 SM - 64

① ② ③ ④ ⑤

① Series

KLC	Low friction cylinder
-----	-----------------------

④ Action

SM	Single acting
WM	Double acting

② Mounting style

CA	Single clevis
----	---------------

⑤ Cylinder stroke

Bore size	Standard stroke
ø50	64
ø63	78

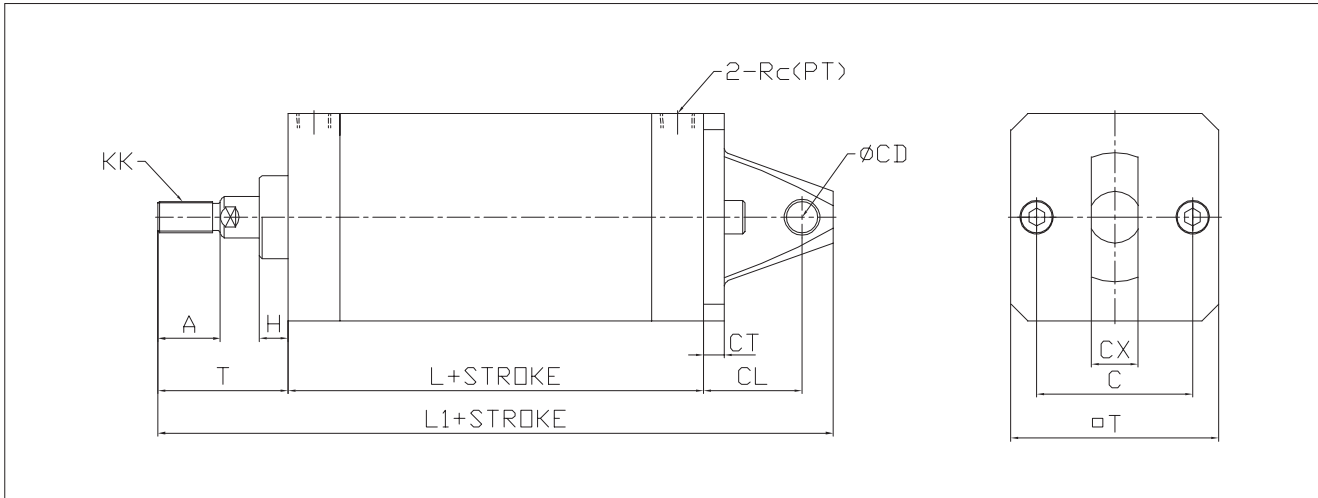
③ Bore size

50	ø50
63	ø63

Specifications

Action	Single/Double acting, Single rod
Fluid	Clean Air (for 5 μ m Filter & Oil remove filter)
Max. operating pressure	9.0kgf/cm ² (0.9MPa)
Min. operating pressure	0.1kgf/cm ² (0.01MPa)
Ambient & fluid temperature	5°C ~ 60°C
Standard stroke	Refer to the standard stroke table above
Internal leakage	1.6 l/min
Mounting direction	Horizontal

Dimensions



Unit : mm

Bore size	A	H	T	L	L1	CT	CL	ØCD	CX	C	□T	KK	Rc(PT)
Ø50	20	10	45	69	157	8	33	10	16	50	64	M10X1.25	1/4
Ø63	24	12	50	82	182	8	38	12	18	60	80	M12X1.25	1/4