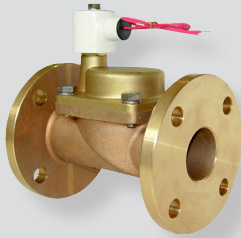


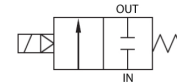


HPW2510F-20 ~ 6524F-20

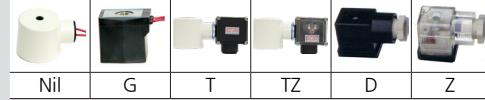


HPW 3212F-20

Symbol



Electrical connection



How to Order

HPW 3212 F - 20 - AC220V

①

① Orifice & Port size

Table with 3 columns: Orifice, Port size. Rows include models 2510, 3212, 4014, 5020, 6524 with their respective dimensions.

②

④ Electrical connection

Table mapping electrical connection codes (Nil, G, T, TZ, D, Z) to their descriptions like Console box, Grommet coil, etc.

④

⑥ Rated voltage

Table mapping AC/DC voltages (AC110V, AC220V, DC12V, etc.) to their frequencies and types.

③ Seal material

Table mapping seal materials (Nil, M, E) to their materials (NBR, FPM, EPDM) and applications.

Specifications

Main specifications table with columns for Classification, Standard, Option, and rows for Fluid, Temperature, Pressure, Voltage, Power, Materials, etc.

\* Not available in explosive atmosphere.
\* If oil is applied, the range of pressure shall be based on 50cst for oil viscosity.

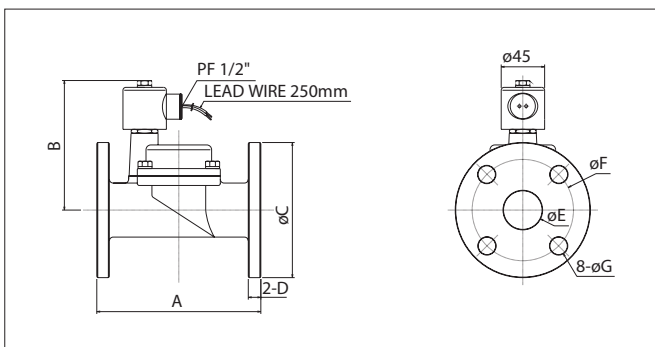
Features

- Piston pilot type
• Normally closed type
• Decrease water hammering effect
• Fire resistant structure, high durability
• Can be used for maximum pressure of 20kgf/cm²
• Use of various coil type

Applications

- Water piping
• Medical instrument
• High pressure cleaner
• Wire cutting machine
• Compressor
• Industrial washer

Dimensions

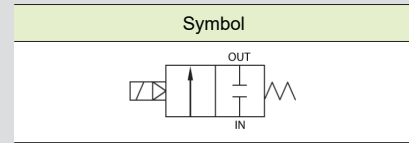


Dimensions table with columns: Model, A, B, C, D, E, F, G, Weight (kg). Rows include models HPW 2510F-20 through HPW 6524F-20.

# HPW8030F-20 series



HPW 8030F-20



## How to Order

HPW 80 30 F - 20   - AC220V

①                      ②                      ③                      ④

### ① Orifice

80	Ø80
----	-----

### ② Port size

30	3
----	---

### ③ Seal material

	Material	Applications
Nil	NBR	(Standard)
M	FPM	Chemical, Hot water 100°C
E	EPDM	Hot water 100°C

### ④ Voltage

AC110V	AC110V 60Hz
AC220V	AC220V 60Hz
DC12V	DC12V
DC24V	DC24V
AC100V	AC100V 50/60Hz
AC200V	AC200V 50/60Hz
AC110V-50Hz	AC110V 50Hz
AC220V-50Hz	AC220V 50Hz
AC240V-50Hz	AC240V 50Hz
AC24V-50Hz	AC24V 50Hz

## Specifications

Classification	Standard	Option	Classification	Standard	Option
Fluid	Air, Water, Clean oil, Inert gas		Voltage	AC100V 50/60Hz	AC110V 50Hz
Fluid temp.	0 ~ 60°C	100°C		AC110V 60Hz	AC220V 50Hz
Ambient temp.	50°C (Max.)			AC200V 50/60Hz	AC240V 50Hz
Pressure range	1 ~ 10kgf/cm <sup>2</sup> (0.05 ~ 1MPa)		Allowable voltage fluctuation	±10% (AC), ±5% (DC)	
Coil insulation	Class B		Power consumption	AC, DC : 30W	
Electrical connection	Terminal box Lead wire G(PF1/2)		Seal material	Bronze	
End connection	JIS 10K FF		Seal Material	NBR	EPDM, FPM
Orifice	Ø80		Weight	18.2Kg	

## Features

- Piston Pilot type
- Normally closed type
- Fire resistant structure, high durability
- High temperature, large capacity

## Applications

- Water piping
- Ventilator
- Air conditioner
- Industrial washing machine
- Compressor
- Medical instrument
- Boiler
- Option : Blower machine

※ Not available in explosive atmosphere.

※ If oil is applied, the range of pressure shall be based on 50cst for oil viscosity.

## Dimensions

