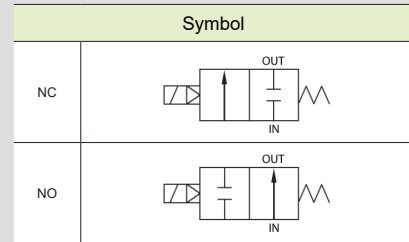


# HKW154S, 206S, 2510S



HKW 154S



## How to Order

HKW    154 S       - AC220V

①            ②            ③            ④            ⑤

### ① Port type

Nil	Rc(PT) (Standard)
G	G

### ③ Initial status

Nil	Normally closed (Standard)
NO	Normally open

### ⑤ Voltage

AC110V	AC110V 50Hz/60Hz
AC220V	AC220V 50Hz/60Hz
DC24V	DC24V

### ② Orifice & Port size

	Orifice	Port size
154	Ø15	1/2
206	Ø20	3/4
2510	Ø25	1

### ④ Seal material

	Material	Applications
Nil	NBR	Standard
M	FPM	Chemical, Hot water 120℃
E	EPDM	Hot water 100℃

## Specifications

Classification	Standard	Option	Classification	Standard	Option	
Fluid	Air, Water, Clean oil, Inert gas		Voltage	AC110V 60Hz AC220V 60Hz DC24V		
Fluid temp.	0 ~ 60℃	EPDM(100℃) FPM(120℃)		Allowable voltage fluctuation	±10%(AC), ±5%(DC)	
Ambient temp.	50℃ (Max.)				Power consumption	AC, DC : 30W
Pressure range	0 ~ 10kgf/cm <sup>2</sup> (0 ~ 1.0MPa)	DC : 0~7kgf/cm <sup>2</sup> (0 ~ 0.7MPa)	Body material	BODY: SCS14 TRIM: SUS304		
Coil insulation	Class B		Seal material	NBR + SUS304 PISTON	EPDM FPM	
Electrical connection	Terminal box lead wire G(PF1/2)		Weight	Refer to the table below		
Port size	Rc(PT) 1/2, 3/4, 1					
Orifice	Ø15, Ø20, Ø25					

## Features

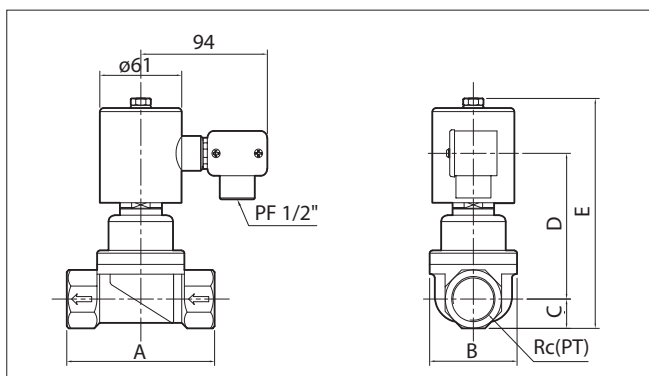
- Piston pilot kick type-Direct acting type
- Operate in 0kgf/cm<sup>2</sup> of differential pressure (Vacuum)
- Seal material can be changed depending on fluid Specifications.
- Fire resistant structure, large capacity
- Horizontal pipe (30° or less) installation
- Terminal box type electrical connection

## Applications

- Water piping
- Medical instrument
- Air conditioner
- Industrial cleaner
- Ventilator
- Compressor

※ Not available in explosive atmosphere.  
※ If oil is applied, the range of pressure shall be based on 50cst for oil viscosity.

## Dimensions

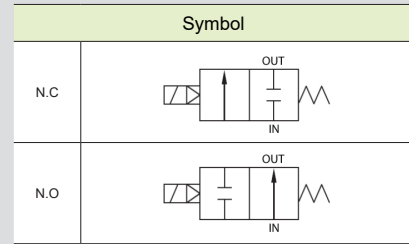


Model	A	B	C	D	E	Rc(PT)	Orifice	Weight (kg)
HKW 154S	90	50	14.5	97	151	1/2	Ø15	1.66
HKW 206S	100	65	18	101	159	3/4	Ø20	2.10
HKW 2510S	110	65	21	105	166	1	Ø25	2.24
HKW 154SNO	90	50	14.5	97	167.5	1/2	Ø15	1.60
HKW 206SNO	100	65	18	101	176	3/4	Ø20	2.10
HKW 2510SNO	110	65	21	105	183	1	Ø25	2.30

# HKW3212S, 4014S, 5020S



HKW 3212S



## How to Order



### ① Port type

Nil	Rc(PT) (Standard)
G	G

### ③ Initial status

Nil	Normally closed (Standard)
NO	Normally open

### ⑤ Voltage

AC110V	AC110V 50Hz/60Hz
AC220V	AC220V 50Hz/60Hz
DC24V	DC24V

### ② Orifice & Port size

	Orifice	Port size
3212	Ø32	1 1/4
4014	Ø40	1 1/2
5020	Ø50	2

### ④ Seal material

	Material	Applications
Nil	NBR	Standard
M	FPM	Chemical, Hot water 120°C
E	EPDM	Hot water 100°C

## Specifications

Classification	Standard	Option	Classification	Standard	Option
Fluid	Air, Water, Clean oil, Inert gas		Voltage	AC110V 50/60Hz AC220V 50/60Hz DC24V	
Fluid temp.	0 ~ 60°C	EPDM(100°C) FPM(120°C)		±10%(AC), ±5% (DC)	
Ambient temp.	50°C (Max.)				
Pressure range	NC: 0 ~ 10kgf/cm <sup>2</sup> NO: 0~7kgf/cm <sup>2</sup>	DC : 0~7kgf/cm <sup>2</sup> (0 ~ 0.7MPa)	Allowable voltage fluctuation		
Coil insulation	Class B		Power consumption	AC, DC : 30W	
Electrical connection	Terminal box lead wire G(PF)1/2		Body material	BODY: SCS 14 TRIM: SUS 304	
Port size	Rc(PT) 1 1/4, 1 1/2, 2		Seal material	NBR + SUS304 PISTON	EPDM FPM
Orifice	Ø32, Ø40, Ø50		Weight	Refer to the table below	

## Features

- Piston pilot kick type-Direct acting type
- Operate in 0kgf/cm<sup>2</sup> of differential pressure (Vacuum)
- Seal material can be changed depending on fluid Specifications.
- Fire resistant structure
- Horizontal pipe (30° or less) installation
- Terminal box type electrical connection

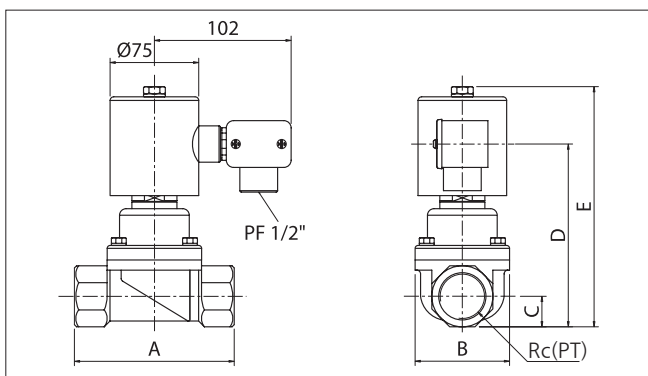
## Applications

- Water piping
- Medical instrument
- Air conditioner
- Industrial cleaner
- Ventilator
- Compressor

※ Not available in explosive atmosphere.

※ If oil is applied, the range of pressure shall be based on 50cst for oil viscosity.

## Dimensions



Model	A	B	C	D	E	Rc(PT)	Orifice	Weight (kg)
HKW 3212S	122	86	26	156	204	1 1/4	ø32	4.2
HKW 4014S	122	86	29	162	210	1 1/2	ø40	4.3
HKW 5020S	140	100	36	174	222	2	ø50	5.6
HKW 3212S(NO)	122	86	26	156	224	1 1/4	ø32	4.0
HKW 4014S(NO)	122	86	29	162	230	1 1/2	ø40	4.1
HKW 5020S(NO)	140	100	36	174	242	2	ø50	5.3