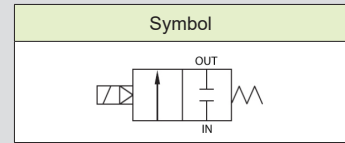


# HKS154S, 206S, 2510S



HKS 154S



## How to Order

HKS    154 S - AC220V

①                      ②                      ③

### ① Port type

Nil	Rc(PT) (Standard)
G	G

### ② Orifice & Port size

	Orifice	Port size
154	Ø15	1/2
206	Ø20	3/4
2510	Ø25	1

### ③ Voltage

AC220V	AC220V 50Hz/60Hz
--------	------------------

## Specifications

Classification	Standard	Option	Classification	Standard	Option
Fluid	Air, Steam, Hot water		Voltage	AC220V 50/60Hz	
Fluid temp.	0 ~ 180 °C				
Ambient temp.	50 °C (Max.)				
Pressure range	0 ~ 7kgf/cm <sup>2</sup> (0 ~ 0.7MPa)		Allowable voltage fluctuation	±10%(AC)	
Coil insulation	Class H		Power consumption	AC: 30W	
Electrical connection	Terminal box lead wire G(PF)1/2		Body material	BODY: SUS 14 TRIM: SUS 304	
Port size	Rc(PT) 1/2, 3/4, 1		Seal material	PTFE + SUS304 PISTON	FPM + SUS304 PISTON
Orifice	Refer to the table below		Weight	Refer to the table below	

※ Not available in explosive atmosphere.

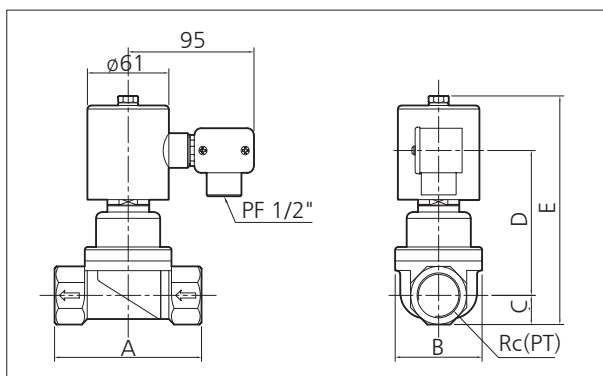
## Features

- Piston pilot kick type-Direct acting type
- Operate in 0kgf/cm<sup>2</sup> of differential pressure (Vacuum)
- Fire resistant structure
- Stainless steel body
- Horizontal pipe (30° or less) installation
- Terminal box type electrical connection

## Applications

- Steam piping
- Dyeing machine
- Heat exchanger
- Sterilizer
- Industrial cleaner
- Ventilator

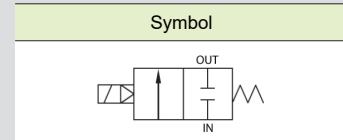
## Dimensions



Model	A	B	C	D	E	Rc(PT)	Orifice	Weight (kg)
HKS 154S	90	50	14.5	97	151	1/2	Ø15	1.66
HKS 206S	100	65	18	101	159	3/4	Ø20	2.10
HKS 2510S	110	65	21	105	166	1	Ø25	2.24



# HKS3212S, 4014S, 5020S series



## How to Order

HKS    3212 S - AC220V

①                      ②                      ③

### ① Port type

Nil	Rc(PT) (Standard)
G	G

### ② Orifice & Port size

	Orifice	Port size
3212	Ø32	1 1/4
4014	Ø40	1 1/2
5020	Ø50	2

### ③ Voltage

AC220V	AC220V 50Hz/60Hz
--------	------------------

## Specifications

Classification	Standard	Option	Classification	Standard	Option
Fluid	Air, Steam, Hot water		Voltage	AC220V 50Hz/60Hz	
Fluid temp.	0 ~ 180 °C				
Ambient temp.	50 °C (Max.)				
Pressure range	0 ~ 7kgf/cm <sup>2</sup> (0 ~ 0.7MPa)		Allowable voltage fluctuation	±10%	
Coil insulation	Class H		Power consumption	AC: 30W	
Electrical connection	Terminal box Lead wire G(PF)1/2		Seal material	BODY: SCS 14 TRIM: SUS 304	
End connection	Rc(PT) 1 1/4, 1 1/2, 2		Seal Material	PTFE + SUS304 PISTON	FPM + SUS304 PISTON
Orifice	Refer to the table below		Weight	Refer to the table below	

## Features

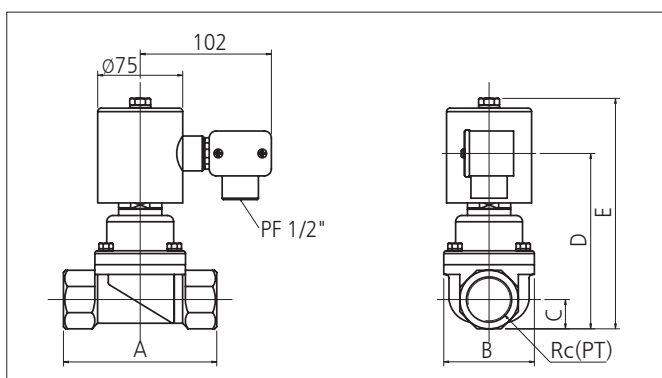
- Piston Pilot Kick type-Direct acting type
- Differential pressure 0kgf/cm<sup>2</sup> operation
- Fire resistant structure
- Stainless steel body
- Terminal box type
- Horizontal pipe (30° or less) installation

## Applications

- Steam piping
- Industrial washer
- Heat exchanger
- Sterilizer
- Dyeing machine
- Ventilator

※Not available in explosive atmosphere.

## Dimensions



Model	A	B	C	D	E	Rc(PT)	Orifice	Weight (kg)
HKS 3212S	122	86	26	156	204	1 1/4	ø32	4.20
HKS 4014S	122	86	29	162	210	1 1/2	ø40	4.30
HKS 5020S	140	100	36	174	222	2	ø50	5.60