

# KCSC series



### Features

- Control the speed with smooth and consistently.
- Hermetically sealed and can be operated in any position without and leakage.
- Easily adjust force using the adjustment dial.

### How to Order

KCSC **15**

①      ②

#### ① Series

KCSC	Constant speed controller
------	---------------------------

#### ② Stroke

15	15mm
30	30mm
50	50mm

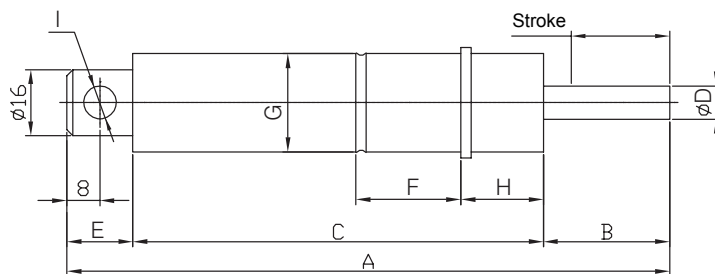
### Specifications

Model	KCSC15	KCSC30	KCSC50
Stroke	15	30	50
Propelling force (N)	Min.	30	35
	Max.	3,000	3,000
Return force (N)	Min.	20	20
	Max.	30	35
Return time (Sec)	0.8	1.2	1.8
Max. acceptance angle (°)	1.5	1.5	1.0
Material	Body	Steel(Nickel plating)	
	Piston rod	Special steel(Chromium plating)	
Range of Impact Velocity	0.01m/s~0.65m/s		
Ambient Temperature	-10~60°C		
Adjustment	Adjustment knob located at rear."0" is soft and "30" is hard.		

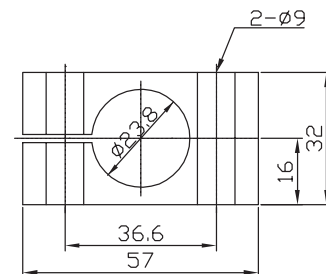
### ⚠ Precautions

1. Don't turn piston rod. The seal will be damaged if turned.
2. Piston rod and colliding object must be perpendicular

### Dimensions



Constant speed controller

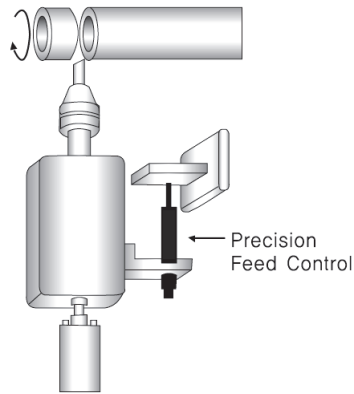


Mounting Block

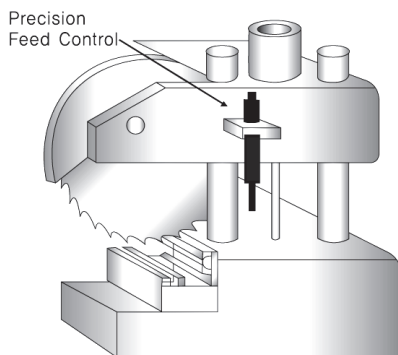
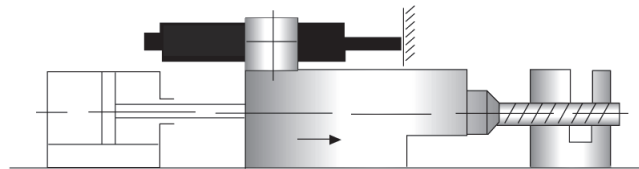
Unit:mm

Model	Stroke	A	B	C	øD	E	F	øG	H	øI	øJ	Weight
KCSC15	15	166.5	20	130.5	8	16	25.4	23.8	20	8	16	340
KCSC30	30	209	35	158								350
KCSC50	50	276	55	205								460

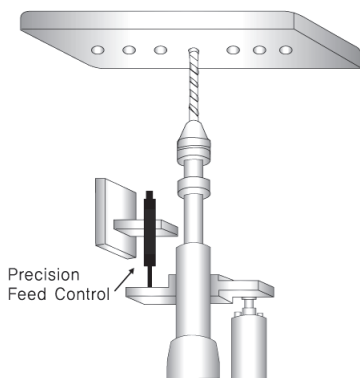
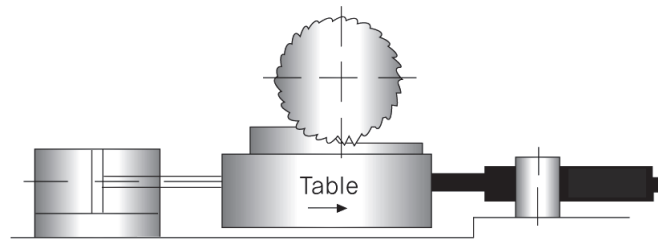
**Applications**



**KCSC as drilling and cutting fixture**  
Prevent damage when the drill pierce with exact adjustment of feed rate of drilling machine.



**KCSC as sawing and milling fixture**  
Adjust feed rate of milling machine exactly when doing milling, honing and polishing work with fixture



**KCSC as drilling press and lathe work**  
Adjust feed rate exactly while doing drilling, pressing and piercing work.

