

# DSD series



### Features

- With spring (External)
- Horizontal port direction
- Jam nut mounting

### Symbol



## How to Order

DSD - ① 25 ② □ ③ R - ④ 6 - ⑤ □

### ① Pad diameter

Refer to dimension 'A' in dimension table

### ③ Material

R	NBR
S	Silicon
V	Viton
U	Urethane

※ Consult KCC for V, U type.

### ② Pad type

Nil	Basic
B	Bellows
F	Flat
E	Elliptical

### ④ Spring stroke

Refer to dimension 'S' in dimension table

### ⑤ Special option

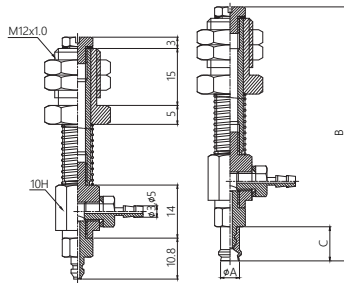
Nil	Standard
CS,CST	Mark free type
ASE	Static electricity free type
HTS	High temperature resistant type

※ CS, CST : With special pad coating, it prevents pad from leaving suction mark on workpiece surface (Ex. Glass or LCD surface).

※ Consult KCC for special type pad.

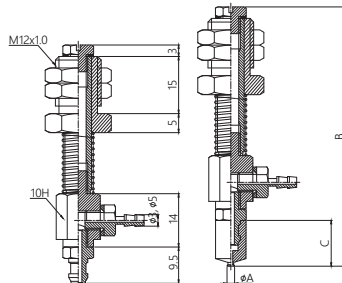
※ Special type has M.O.Q.

**Dimensions**



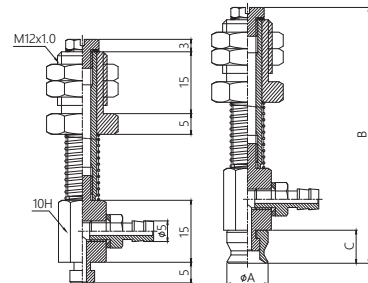
Holder Pad combined

Bellows Ø5  
Compact Ø8, Ø10



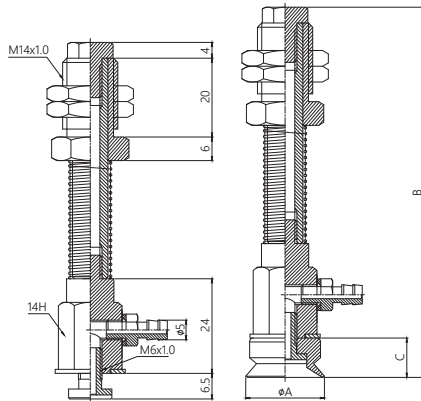
Holder Pad combined

Basic Ø2~Ø8  
Bellows Ø8~Ø15  
Compact Ø15  
Flat Ø15



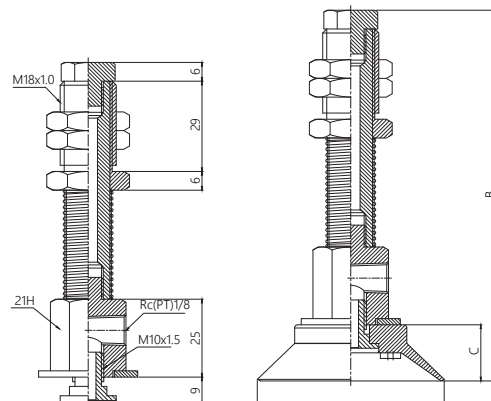
Holder Pad combined

Basic Ø10, Ø15



Holder Pad combined

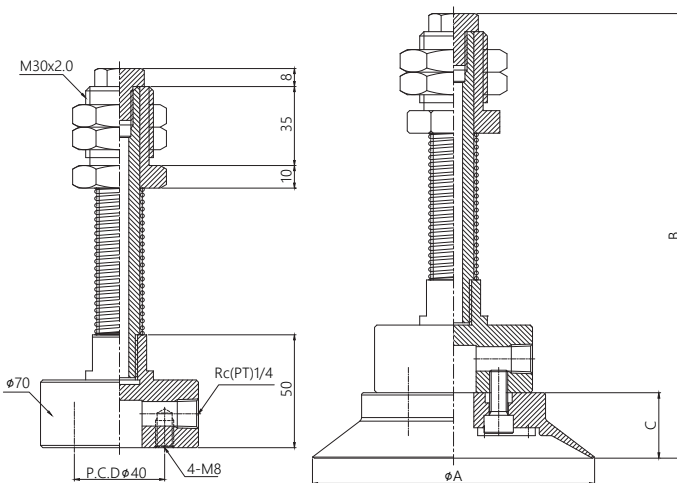
Basic Ø20~Ø50  
Bellows Ø20~Ø50  
Flat Ø20~Ø40  
Elliptical



Holder

Pad combined

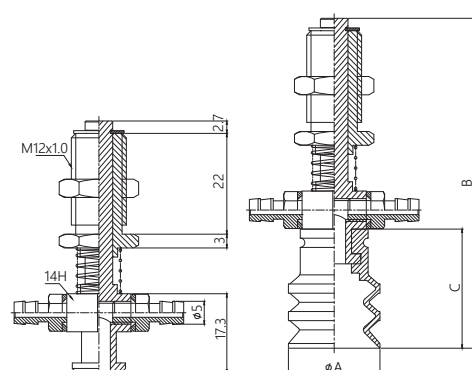
Basic Ø60~Ø100  
Bellows Ø60~Ø100



Holder

Pad combined

Basic Ø125~Ø220  
Bellows Ø125~Ø220



Holder

Pad combined

3 Stage Bellows Ø20~Ø40

**Dimensions**

Unit: mm

Pad type	A	B							C
		6st	10st	15st	20st	30st	50st	70st	
Basic	2	-	68	-	83	-	-	-	12
	4	-	68	-	83	-	-	-	12
	6	-	68	-	83	-	-	-	12
	8	-	68	-	83	-	-	-	12
	10	-	62	-	77	-	-	-	8
	15	-	63	-	78	-	-	-	9
	20	-	-	94	-	113	138	-	10
	25	-	-	95	-	114	139	-	11
	30	-	-	96	-	115	140	-	12
	40	-	-	98	-	117	142	-	14
	50	-	-	99	-	118	143	-	15
	60	-	-	119	-	134	154	179	18
	80	-	-	121	-	136	156	181	20
	100	-	-	122	-	137	157	182	21
	125	-	-	-	-	197	227	-	29
160	-	-	-	-	199	229	-	31	
220	-	-	-	-	203	233	-	35	
Compact	8	-	65	-	80	-	-	-	7
	10	-	66	-	81	-	-	-	8
	15	-	66.5	-	81.5	-	-	-	10.5
Bellows	5	-	67	-	82	-	-	-	9
	8	-	69	-	84	-	-	-	13
	10	-	71	-	86	-	-	-	15
	15	-	73	-	88	-	-	-	17
	20	-	-	102	-	121	146	-	18
	25	-	-	104	-	123	148	-	20
	30	-	-	106	-	125	150	-	22
	40	-	-	109	-	128	153	-	25
	50	-	-	112	-	131	156	-	28
	60	-	-	129	-	144	164	189	28
	80	-	-	134	-	149	169	194	33
	100	-	-	138	-	153	173	198	37
3 Stage Bellows	125	-	-	-	-	238	268	-	70
	160	-	-	-	-	243	273	-	75
	220	-	-	-	-	248	278	-	80
	203	72	-	-	-	-	-	-	26
Flat	303	80	-	-	-	-	-	-	34
	403	92	-	-	-	-	-	-	46
	15	-	66.5	-	81.5	-	-	-	10.5
	20	-	-	95.5	-	114.5	139.5	-	11.5
	25	-	-	95.5	-	114.5	139.5	-	11.5
Elliptical	30	-	-	97	-	116	141	-	13
	40	-	-	97	-	116	141	-	13
Elliptical	20*50	-	-	97	-	116	141	-	13
	30*60	-	-	97	-	116	141	-	13

※ Spring stroke for 3 stage bellows is 6mm.

※ 3 stage bellows type standard with attachment of 2 pcs barb fitting, one side can be blocked by plug.