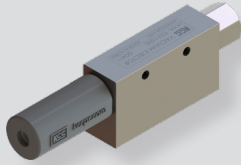


# KSV-S3, S6,T series



KSV-15HS-S3/S6



KSV-15HS-T

### Features

- Excellent chemical resistance and corrosion resistance.
- Suitable for chemicals, gases and corrosives environment.

### Symbol



## How to Order

KSV - ① 10 ② HS ③ - ④

#### ① Series

KSV	Vacuum ejector
-----	----------------

#### ② Nozzle diameter

10	Ø1.0
15	Ø1.5
20	Ø2.0

#### ③ Degree of vacuum

HS	≥ -86.6kPa
----	------------

#### ④ Body material

S3	Stainless steel (SUS 303)
S6	Stainless steel (SUS 316)
T	Teflon

## Specifications

Fluid	Chemical, gas, corrosive fluid
Ambient temperature	0 ~ 60 °C
Lubrication	Not required
Working pressure	1.0 ~ 9.9kgf/cm <sup>2</sup> (0.1 ~ 0.99MPa)
Vacuum switch	Not applicable